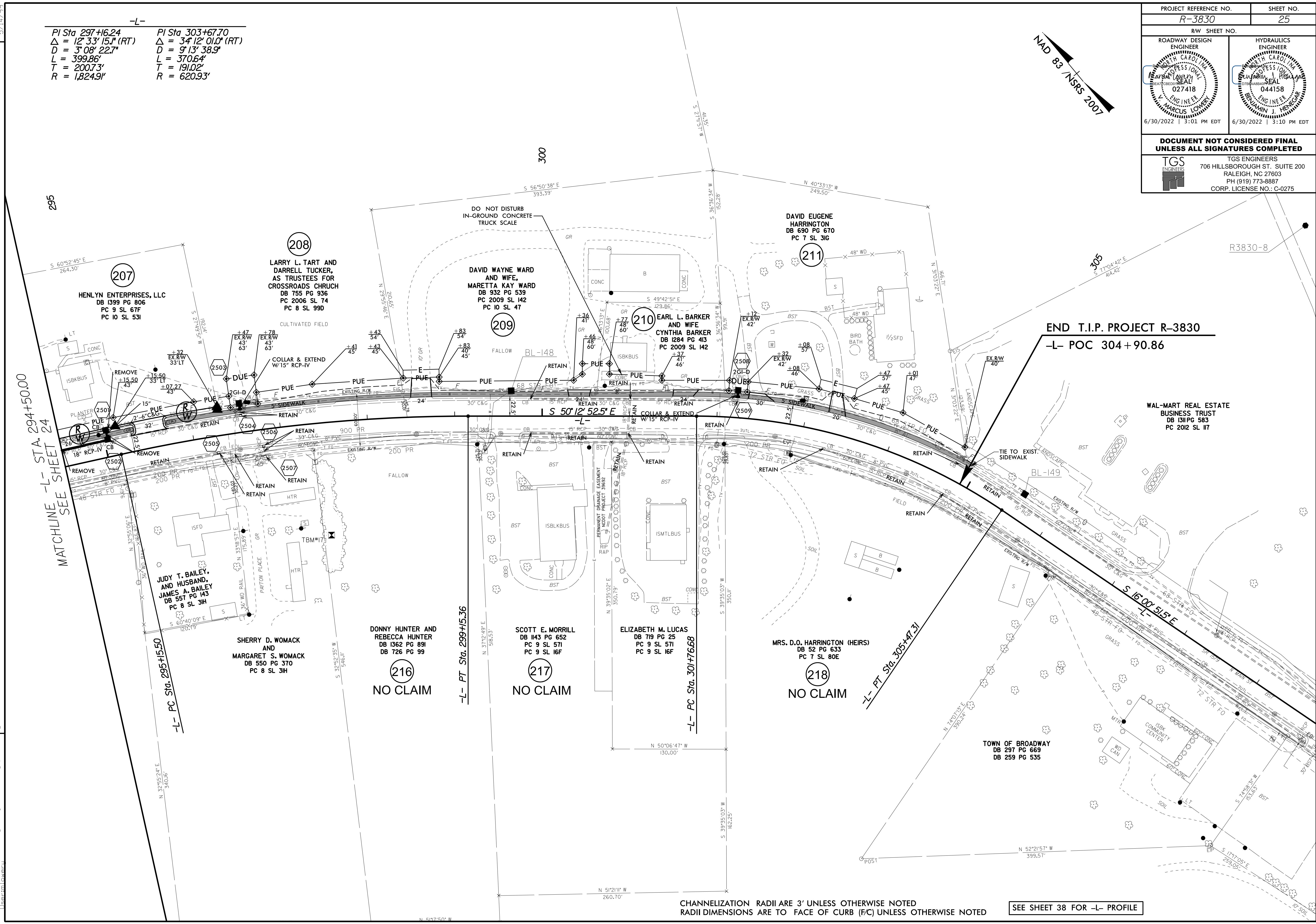
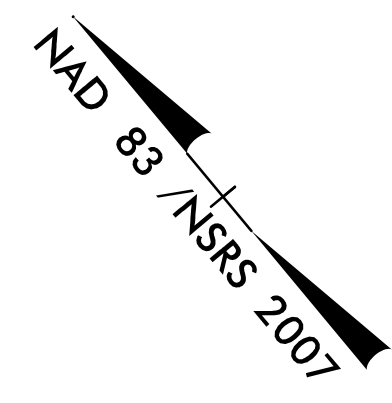


PROJECT REFERENCE NO. <b>R-3830</b>		SHEET NO. <b>25</b>	
RW SHEET NO.			
ROADWAY DESIGN ENGINEER <b>MARCUS LOVRY</b> 027418 6/30/2022   3:01 PM EDT		HYDRAULICS ENGINEER <b>DAMIAN J. HENCHAR</b> 044158 6/30/2022   3:10 PM EDT	
DOCUMENT NOT CONSIDERED FINAL UNLESS ALL SIGNATURES COMPLETED			
TGS ENGINEERS 706 HILLSBOROUGH ST. SUITE 200 RALEIGH, NC 27603 PH (919) 773-8887 CORP. LICENSE NO.: C-0275		TGS ENGINEERS 706 HILLSBOROUGH ST. SUITE 200 RALEIGH, NC 27603 PH (919) 773-8887 CORP. LICENSE NO.: C-0275	

-L-  
 PI Sta 297+16.24    PI Sta 303+67.70  
 $\Delta = 12^{\circ} 33' 15.1''$  (RT)     $\Delta = 34^{\circ} 12' 01.0''$  (RT)  
 $D = 3^{\circ} 08' 22.7''$      $D = 9^{\circ} 13' 38.9''$   
 $L = 399.86'$      $L = 370.64'$   
 $T = 200.73'$      $T = 191.02'$   
 $R = 1,824.91'$      $R = 620.93'$



REVISIONS  
 MATCHLINE -L- STA. 294+50.00  
 SEE SHEET 24

END T.I.P. PROJECT R-3830  
 -L- POC 304+90.86

5/14/2022  
 C:\Users\mlovr\Documents\Roadway\Proj\R-3830\_rdy\_psh\_25.dgn  
 Marc Lovry

CHANNELIZATION RADII ARE 3' UNLESS OTHERWISE NOTED  
 RADII DIMENSIONS ARE TO FACE OF CURB (F/C) UNLESS OTHERWISE NOTED  
 SEE SHEET 38 FOR -L- PROFILE