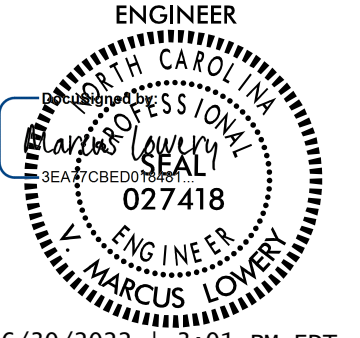
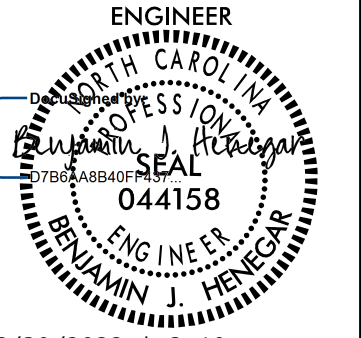
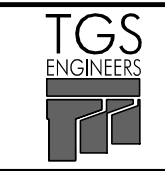
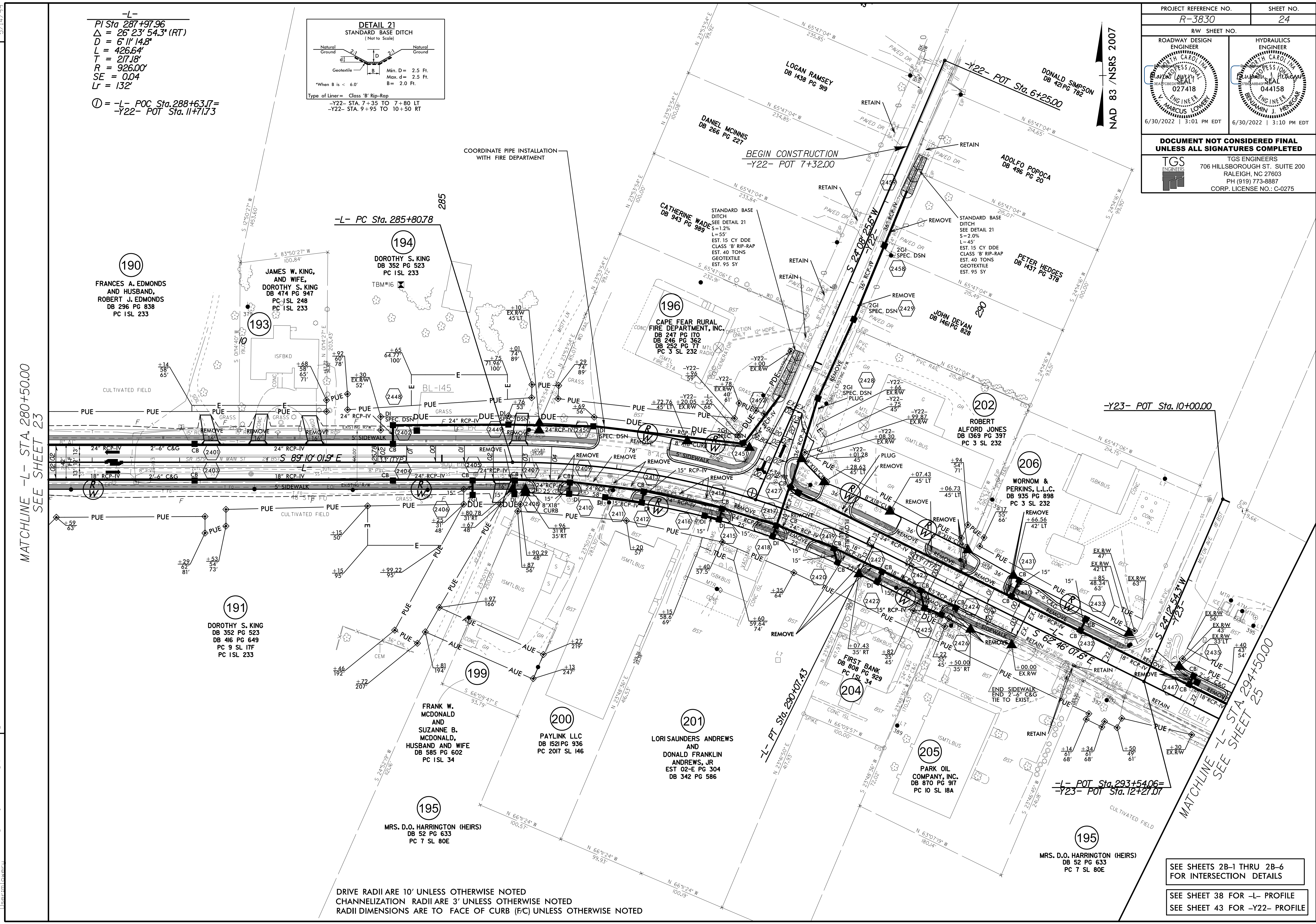
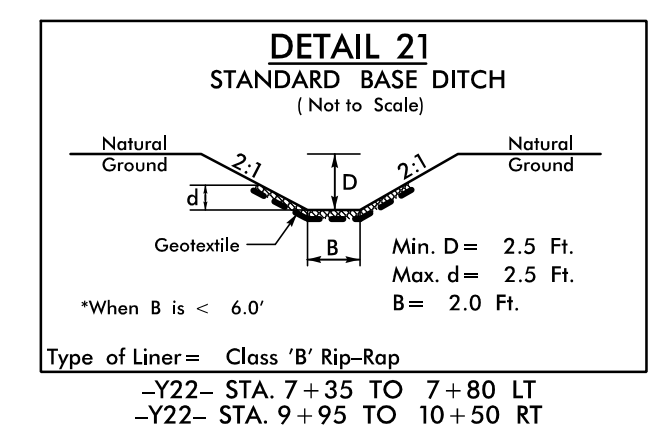


| | | | |
|--|--|---|--|
| PROJECT REFERENCE NO. R-3830 | | SHEET NO. 24 | |
| RW SHEET NO. | | | |
| ROADWAY DESIGN ENGINEER  | | HYDRAULICS ENGINEER  | |
| 6/30/2022 3:01 PM EDT | | 6/30/2022 3:10 PM EDT | |
| DOCUMENT NOT CONSIDERED FINAL UNLESS ALL SIGNATURES COMPLETED | | | |
|  | | TGS ENGINEERS 706 HILLSBOROUGH ST., SUITE 200 RALEIGH, NC 27603 PH (919) 773-8887 CORP. LICENSE NO.: C-0275 | |

-L-
 PI Sta 287+97.96
 $\Delta = 26^\circ 23' 54.3" (RT)$
 $D = 611' 14.8"$
 $L = 426.64'$
 $T = 217.18'$
 $R = 926.00'$
 $SE = 0.04$
 $Lr = 132'$
 (1) = -L- POC Sta. 288+63.17 =
 -Y22- POT Sta. 11+71.73



MATCHLINE -L- STA. 280+50.00
SEE SHEET 23

MATCHLINE -L- STA. 294+50.00
SEE SHEET 25

DRIVE RADII ARE 10' UNLESS OTHERWISE NOTED
 CHANNELIZATION RADII ARE 3' UNLESS OTHERWISE NOTED
 RADII DIMENSIONS ARE TO FACE OF CURB (F/C) UNLESS OTHERWISE NOTED

SEE SHEETS 2B-1 THRU 2B-6
FOR INTERSECTION DETAILS
 SEE SHEET 38 FOR -L- PROFILE
 SEE SHEET 43 FOR -Y22- PROFILE

REVISIONS

5/7/14/99
 1/18/2022
 J:\Projects\NC000\Roadway\Proj\N-3830_rdy_psh_24.dgn
 User: tmlowery