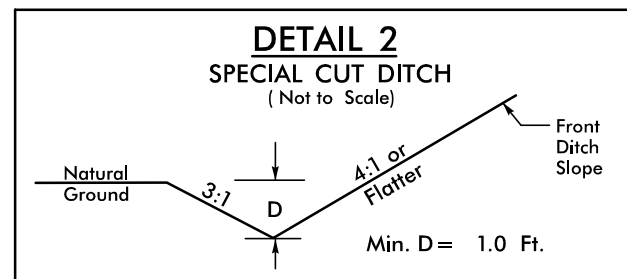
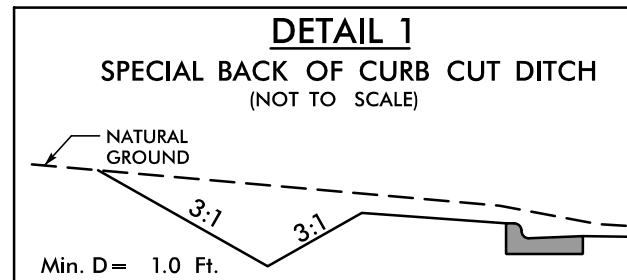


5/14/23



FROM -Y20- STA. 11+00 TO STA. 12+94 RT
FROM -Y20- STA. 11+00 TO STA. 13+00 LT



FROM -L- STA. 278+31 TO STA. 279+20 LT

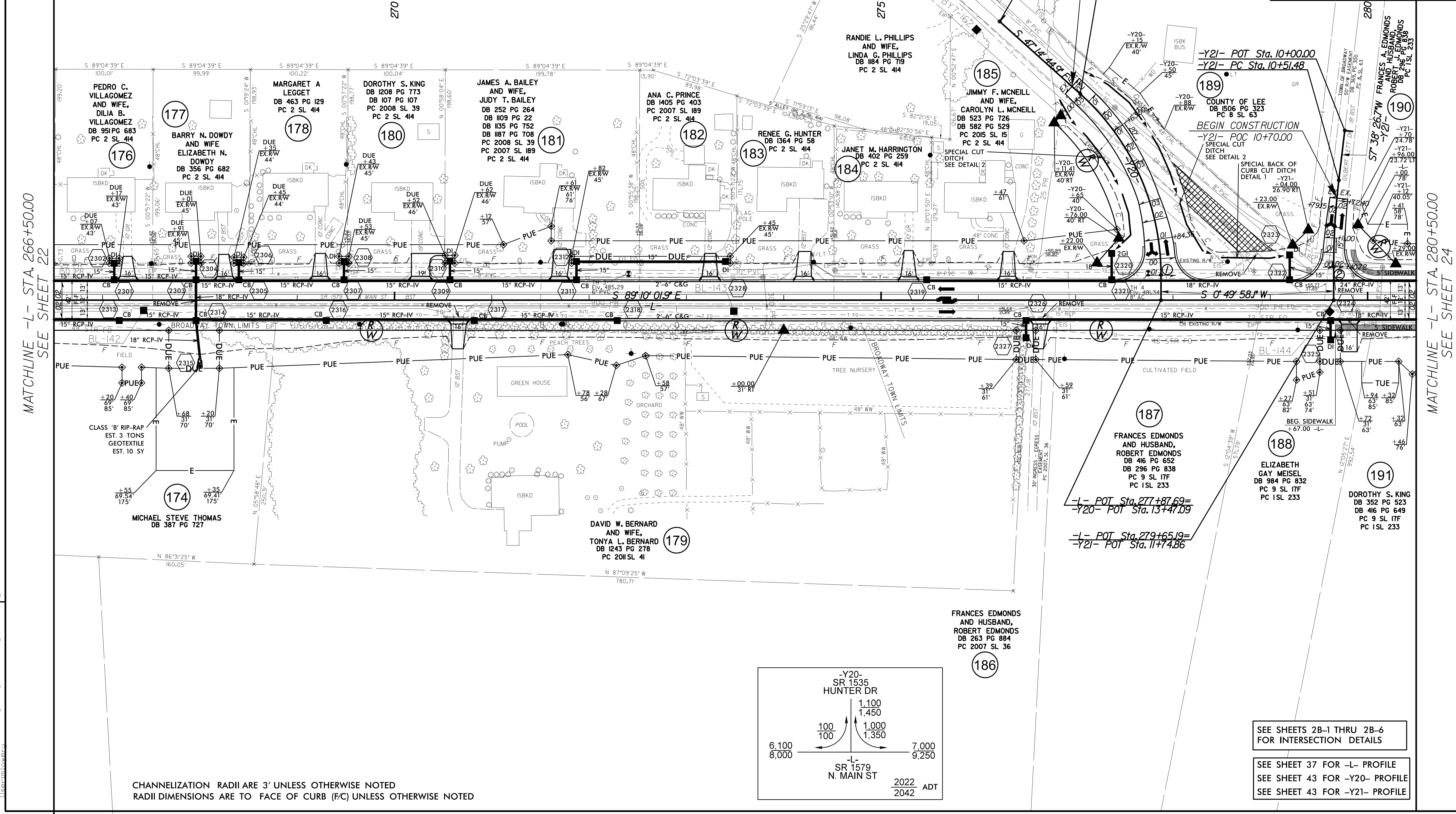
-Y20-
 PI Sta 12+22.92
 $\Delta = 48^{\circ} 04' 43.1''$ (RT)
 $D = 22^{\circ} 55' 05.9''$
 $L = 209.78'$
 $T = 111.51'$
 $R = 250.00'$
 SE = SEE PLANS

-Y21-
 PI Sta 10+96.09
 $\Delta = 6^{\circ} 48' 28.6''$ (LT)
 $D = 7^{\circ} 38' 22.0''$
 $L = 89.12'$
 $T = 44.61'$
 $R = 750.00'$
 SE = SEE PLANS

- ① = -Y20- PT Sta. 13+21.19
- ② = -Y21- PT Sta. 11+40.59

PROJECT REFERENCE NO. R-3830	SHEET NO. 23
ROADWAY DESIGN ENGINEER MARCUS LOVRY 027418	HYDRAULICS ENGINEER MARCUS LOVRY 044158
6/30/2022 3:01 PM EDT	6/30/2022 3:10 PM EDT
DOCUMENT NOT CONSIDERED FINAL UNLESS ALL SIGNATURES COMPLETED	
TGS ENGINEERS 706 HILLSBOROUGH ST., SUITE 200 RALEIGH, NC 27603 PH (919) 773-8887 CORP. LICENSE NO.: C-0275	

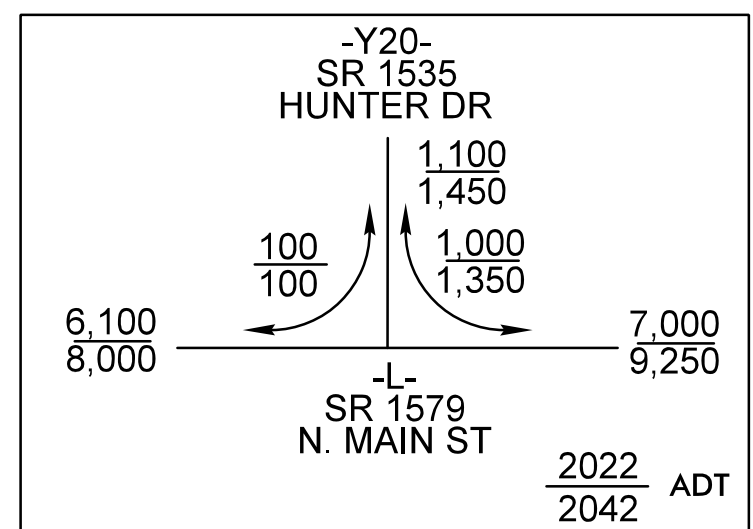
NAD 83 / NSRS 2007



MATCHLINE -L- STA. 266+50.00
SEE SHEET 22

MATCHLINE -L- STA. 280+50.00
SEE SHEET 24

CHANNELIZATION RADII ARE 3' UNLESS OTHERWISE NOTED
RADII DIMENSIONS ARE TO FACE OF CURB (FC) UNLESS OTHERWISE NOTED



SEE SHEETS 2B-1 THRU 2B-6 FOR INTERSECTION DETAILS

SEE SHEET 37 FOR -L- PROFILE
SEE SHEET 43 FOR -Y20- PROFILE
SEE SHEET 43 FOR -Y21- PROFILE

Projects\NCDOT\18-3830-Roadway\Proj\18-3830-rdy_psh_23.dgn