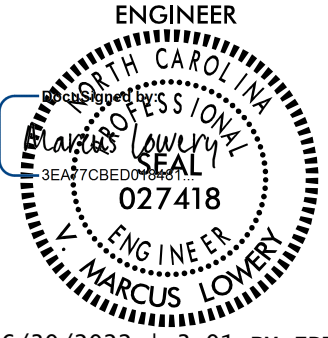
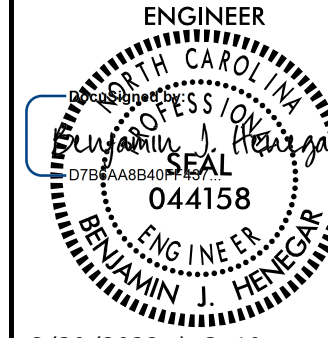
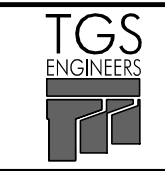
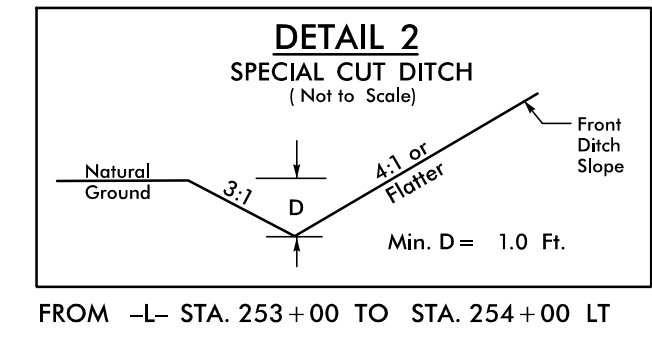


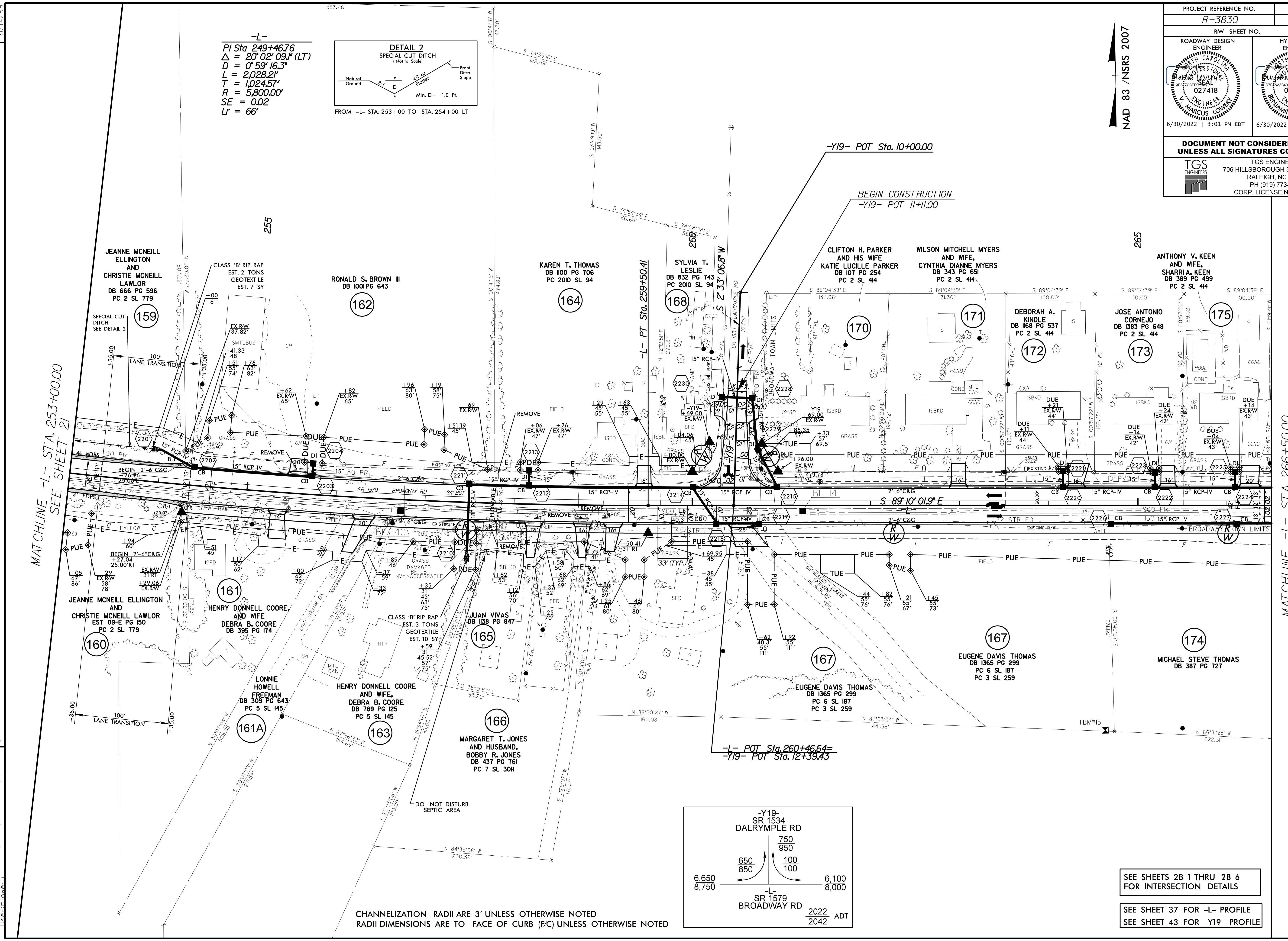
PROJECT REFERENCE NO. R-3830		SHEET NO. 22	
RW SHEET NO.			
ROADWAY DESIGN ENGINEER 		HYDRAULICS ENGINEER 	
6/30/2022 3:01 PM EDT		6/30/2022 3:10 PM EDT	
DOCUMENT NOT CONSIDERED FINAL UNLESS ALL SIGNATURES COMPLETED			
		TGS ENGINEERS 706 HILLSBOROUGH ST., SUITE 200 RALEIGH, NC 27603 PH (919) 773-8887 CORP. LICENSE NO.: C-0275	

NAD 83 / NSRS 2007

-L-
 PI Sta 249+46.76
 $\Delta = 20^\circ 02' 09.1''$ (LT)
 $D = 0' 59' 16.3''$
 $L = 2,028.21'$
 $T = 1,024.57'$
 $R = 5,800.00'$
 $SE = 0.02$
 $Lr = 66'$

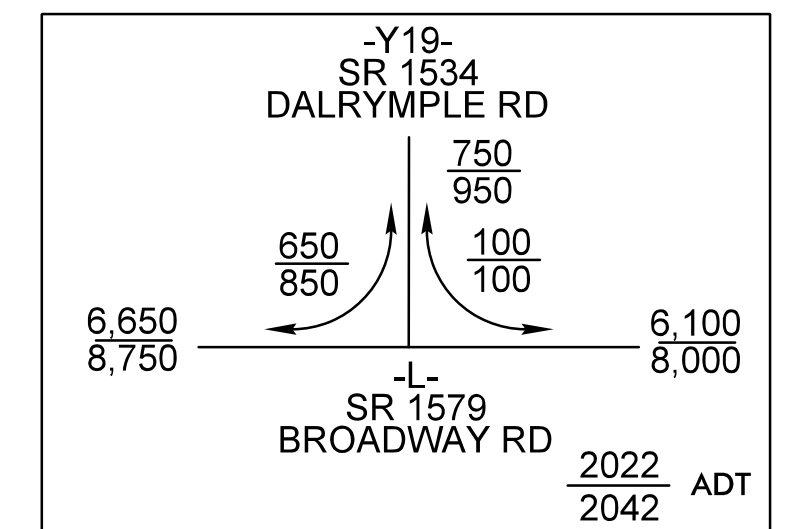


FROM -L- STA. 253+00 TO STA. 254+00 LT



MATCHLINE -L- STA. 253+00.00
SEE SHEET 21

MATCHLINE -L- STA. 266+50.00
SEE SHEET 23



CHANNELIZATION RADII ARE 3' UNLESS OTHERWISE NOTED
RADII DIMENSIONS ARE TO FACE OF CURB (FC) UNLESS OTHERWISE NOTED

SEE SHEETS 2B-1 THRU 2B-6 FOR INTERSECTION DETAILS

SEE SHEET 37 FOR -L- PROFILE
SEE SHEET 43 FOR -Y19- PROFILE

REVISIONS

E:\10_2822\Roadway\Proje\3830\rdy_psh.z22.dgn
User: jlowrey