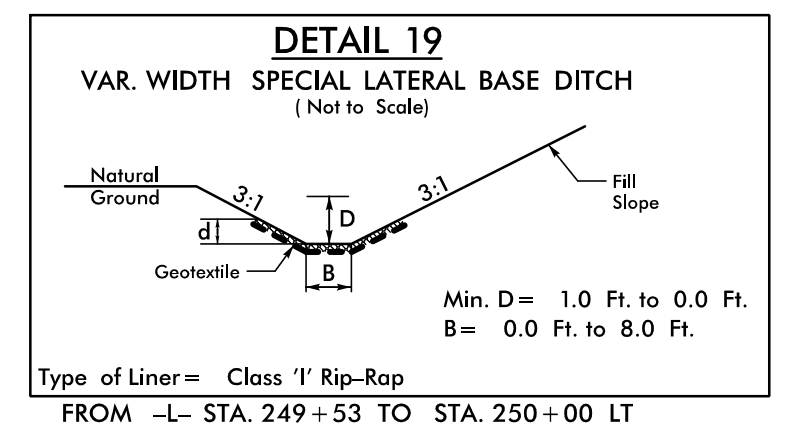


PROJECT REFERENCE NO. <b>R-3830</b>		SHEET NO. <b>21</b>	
RW SHEET NO.			
ROADWAY DESIGN ENGINEER <b>MARCUS LOVRY</b> 027418		HYDRAULICS ENGINEER <b>CHRISTIE MCNEILL LAWLOR</b> 044158	
6/30/2022   3:01 PM EDT		6/30/2022   3:10 PM EDT	
<b>DOCUMENT NOT CONSIDERED FINAL UNLESS ALL SIGNATURES COMPLETED</b>			
TGS ENGINEERS 706 HILLSBOROUGH ST. SUITE 200 RALEIGH, NC 27603 PH (919) 773-8887 CORP. LICENSE NO.: C-0275		TGS ENGINEERS 706 HILLSBOROUGH ST. SUITE 200 RALEIGH, NC 27603 PH (919) 773-8887 CORP. LICENSE NO.: C-0275	

MAD 83 / NSRS 2007

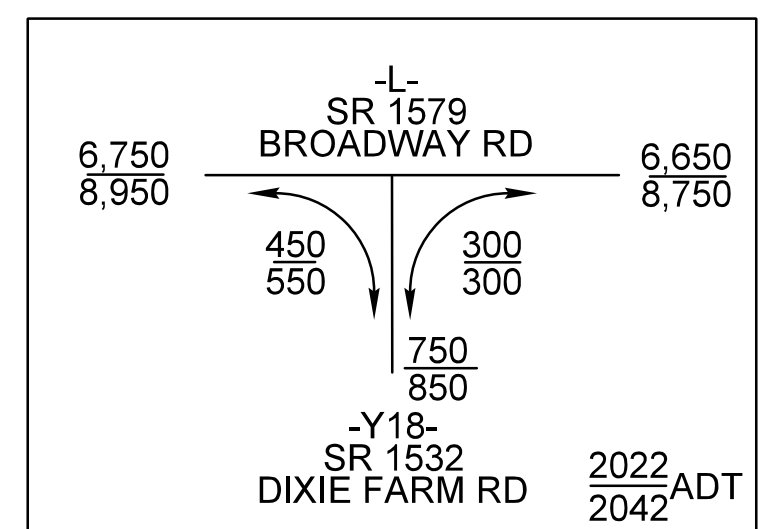
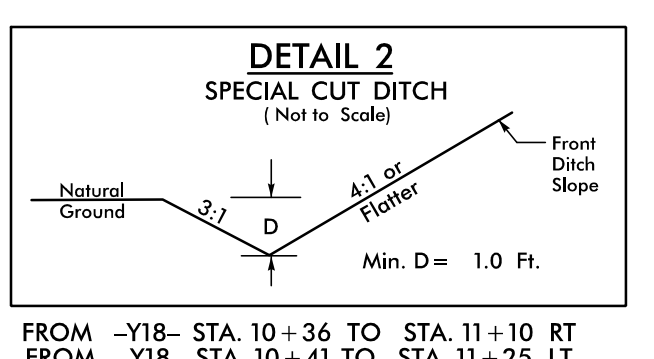
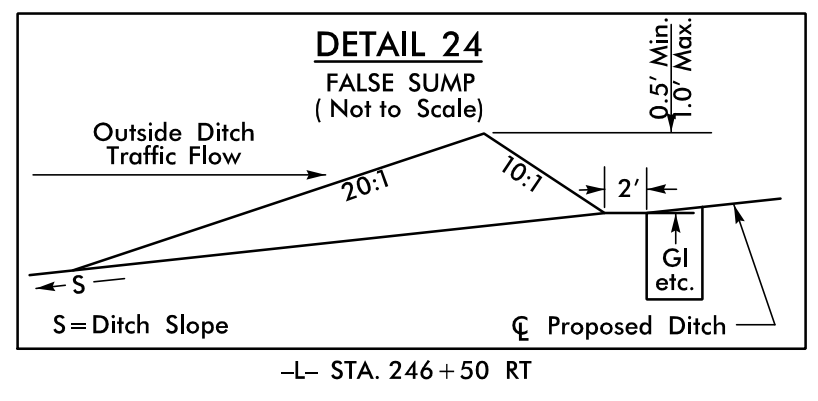
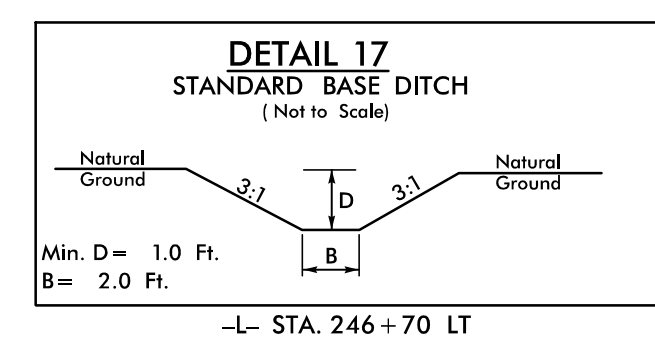
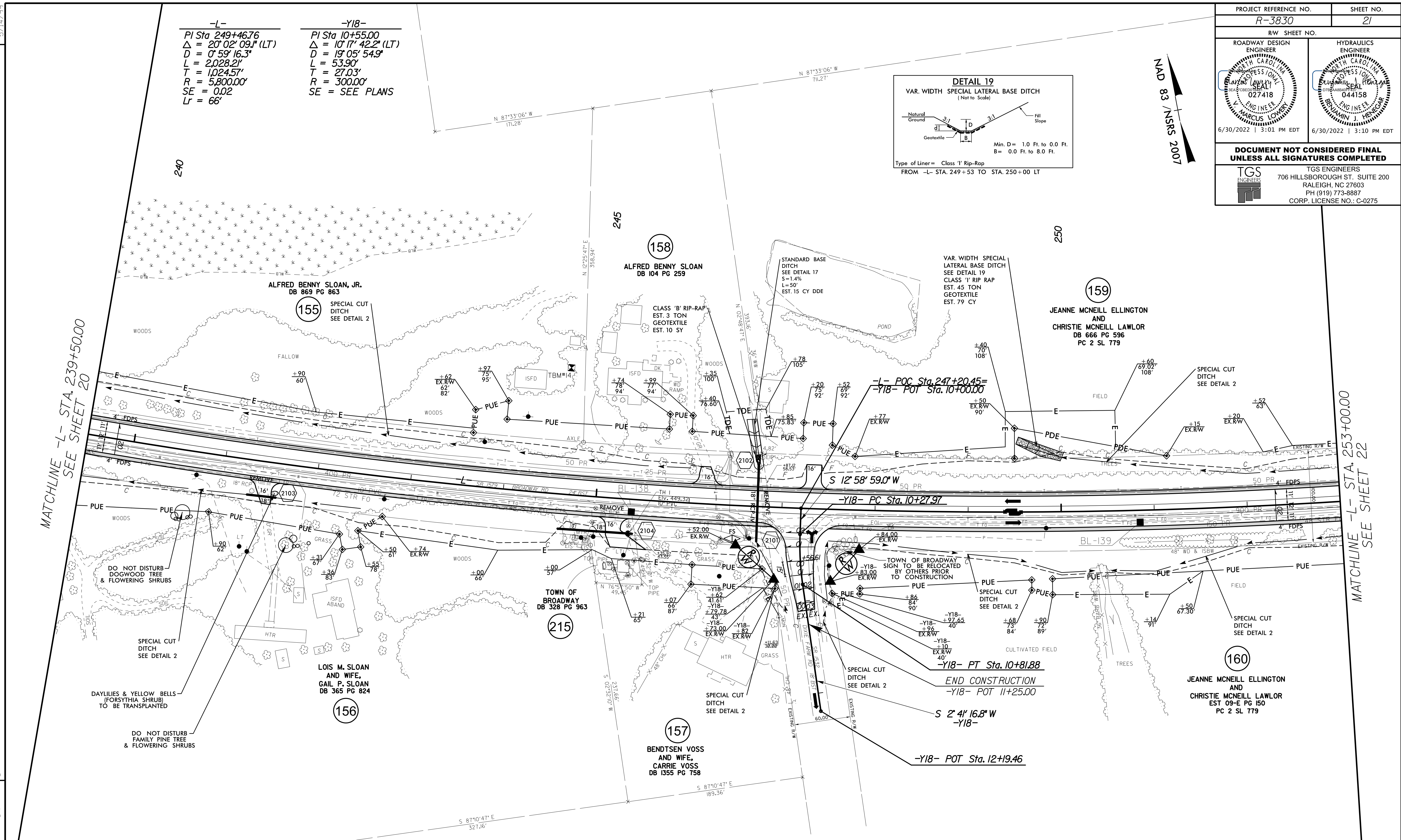
**-L-**  
 PI Sta 249+46.76  
 $\Delta = 20^{\circ} 02' 09.1''$  (LT)  
 $D = 0' 59' 16.3''$   
 $L = 2,028.21'$   
 $T = 1,024.57'$   
 $R = 5,800.00'$   
 $SE = 0.02$   
 $Lr = 66'$

**-Y18-**  
 PI Sta 10+55.00  
 $\Delta = 10^{\circ} 17' 42.2''$  (LT)  
 $D = 19' 05' 54.9''$   
 $L = 53.90'$   
 $T = 27.03'$   
 $R = 300.00'$   
 $SE = SEE PLANS$



MATCHLINE -L- STA. 239+50.00  
SEE SHEET 20

MATCHLINE -L- STA. 253+00.00  
SEE SHEET 22



SEE SHEETS 2B-1 THRU 2B-6 FOR INTERSECTION DETAILS

SEE SHEET 36 FOR -L- PROFILE  
SEE SHEET 42 FOR -Y18- PROFILE

REVISIONS

Projects\NICD\19-3830\Roadway\Proj\19-3830-rdy\_psh\_21.dgn