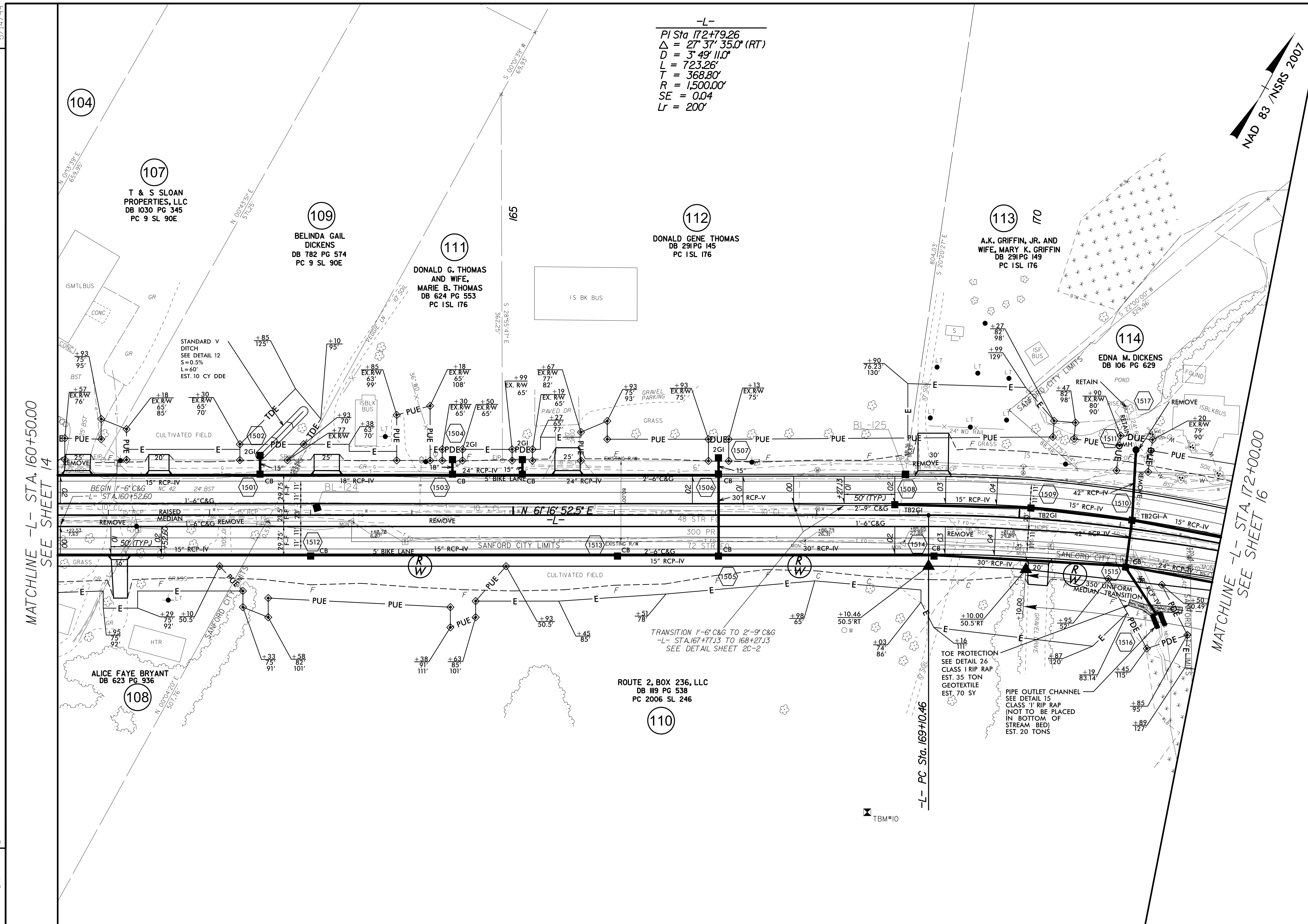
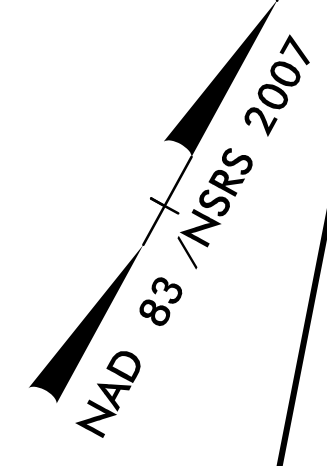


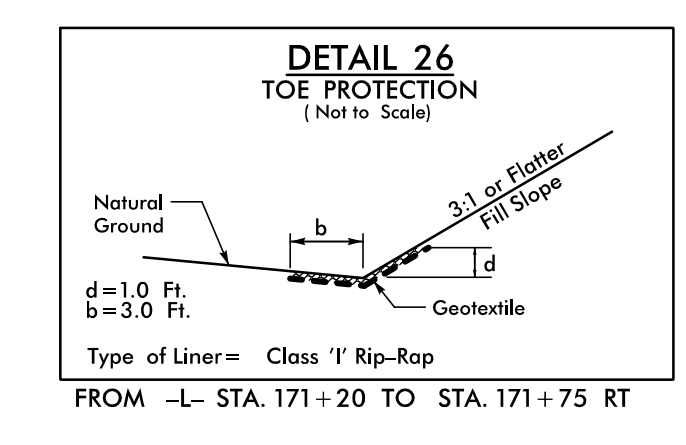
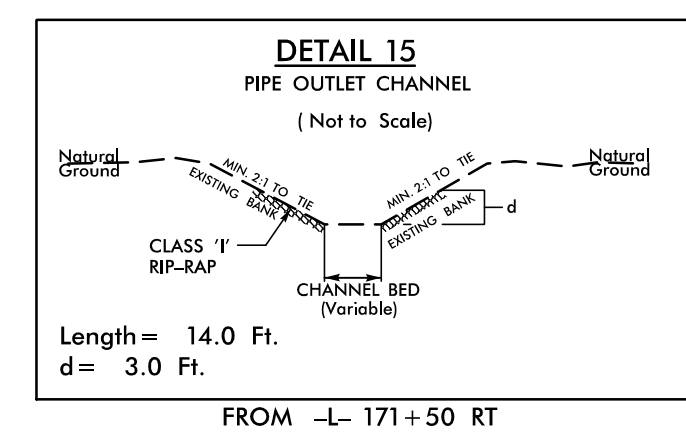
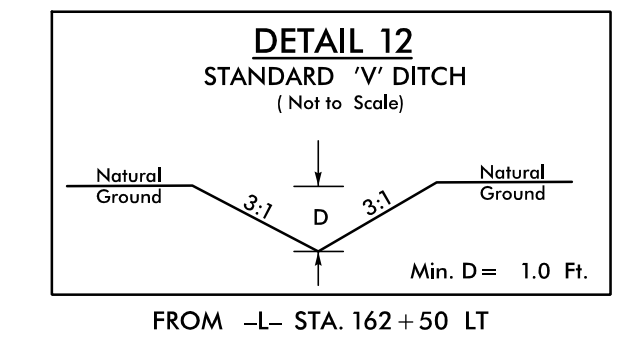
PROJECT REFERENCE NO. R-3830		SHEET NO. 15	
RW SHEET NO.			
ROADWAY DESIGN ENGINEER MARCUS LOWERY 027418 6/30/2022 3:01 PM EDT		HYDRAULICS ENGINEER BENJAMIN J. HENEGAR 044158 6/30/2022 3:10 PM EDT	
DOCUMENT NOT CONSIDERED FINAL UNLESS ALL SIGNATURES COMPLETED			
TGS ENGINEERS		TGS ENGINEERS 706 HILLSBOROUGH ST., SUITE 200 RALEIGH, NC 27603 PH (919) 773-8887 CORP. LICENSE NO.: C-0275	

-L-
 PI Sta 172+79.26
 $\Delta = 27^{\circ} 37' 35.0''$ (RT)
 $D = 3^{\circ} 49' 11.0''$
 $L = 723.26'$
 $T = 368.80'$
 $R = 1,500.00'$
 $SE = 0.04$
 $Lr = 200'$



MATCHLINE -L- STA. 160+50.00
SEE SHEET 14

MATCHLINE -L- STA. 172+00.00
SEE SHEET 16



SEE SHEET 33 FOR -L- PROFILE
SEE SHEETS 2B-1 THRU 2B-6 FOR INTERSECTION DETAILS

REVISIONS

5/14/2022

E:\Projects\NICDOT\15-3830-Roadway\Proj\15-3830-rdy_psh_15.dgn