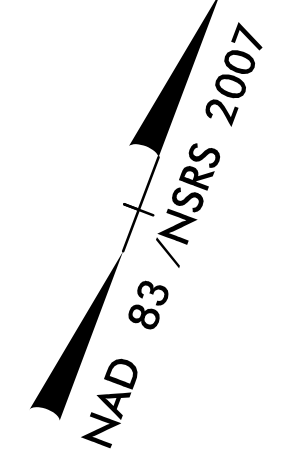
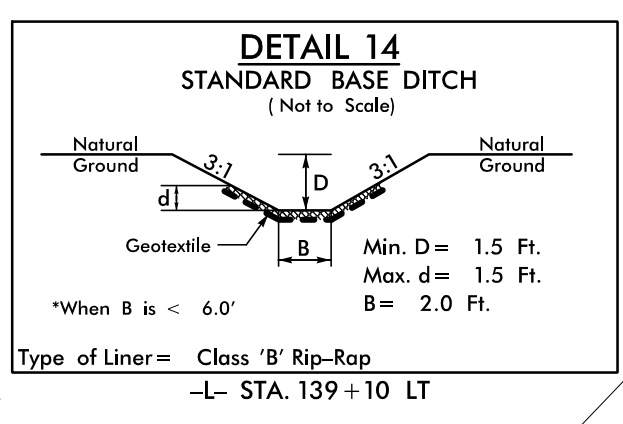
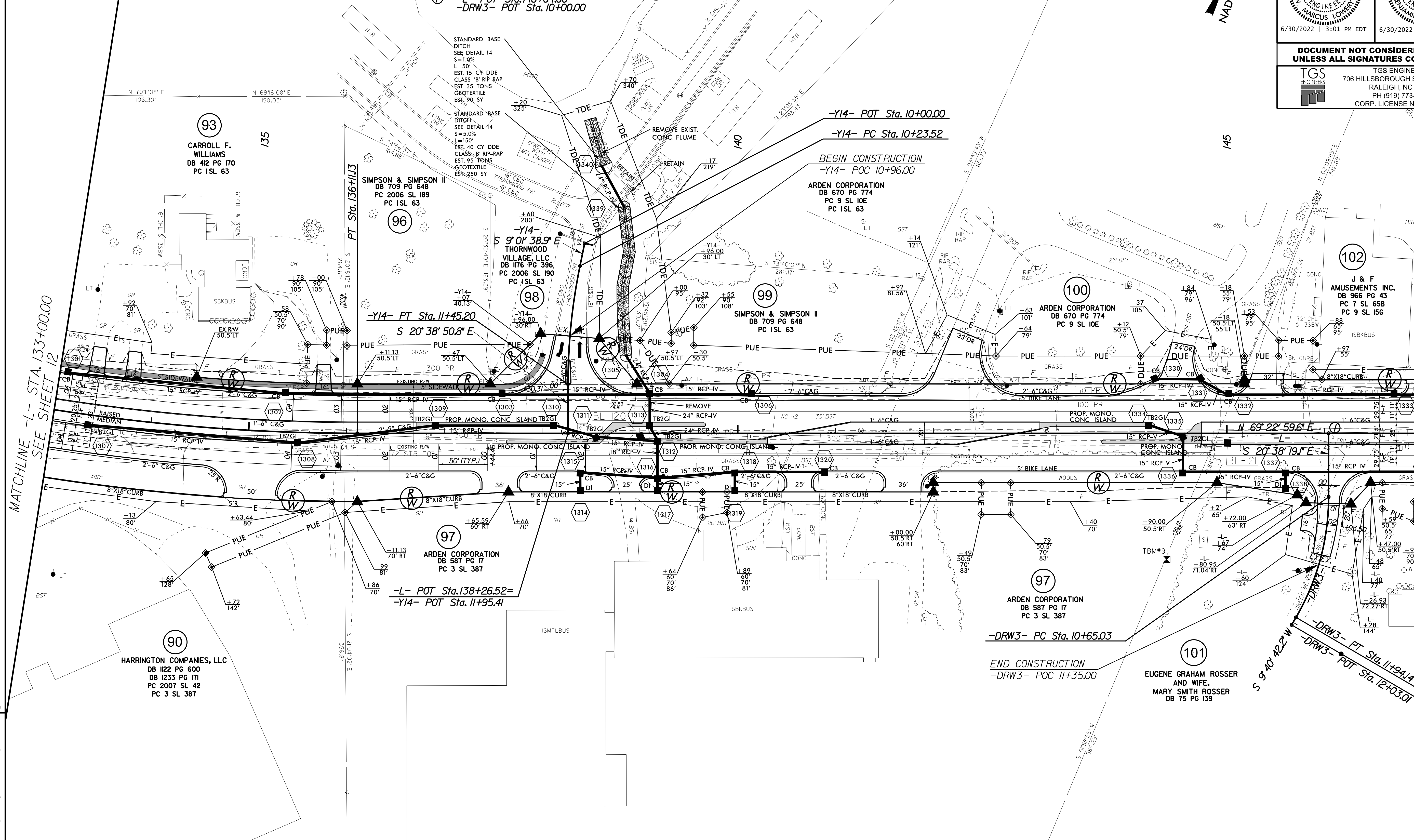


5/7/14/99

<p>-L- PI Sta 130+71.82 $\Delta = 31' 44" 13.7" (LT)$ $D = 2' 51" 53.2"$ $L = 1,107.84'$ $T = 568.53'$ $R = 2,000.00'$ $SE = 0.04$ $Lr = 200'$</p>	<p>-Y14- PI Sta 10+84.57 $\Delta = 11' 37" 11.9" (LT)$ $D = 9' 32" 57.5"$ $L = 121.68'$ $T = 61.05'$ $R = 600.00'$ $SE = SEE PLANS$</p>	<p>-DRW3- PI Sta 11+31.13 $\Delta = 30' 19" 01.4" (RT)$ $D = 23' 28" 54.8"$ $L = 129.11'$ $T = 66.10'$ $R = 244.00'$ $SE = SEE PLANS$</p>
--	---	---



PROJECT REFERENCE NO. R-3830	SHEET NO. 13
RW SHEET NO.	
ROADWAY DESIGN ENGINEER MARCUS LOWERY 027418 6/30/2022 3:01 PM EDT	HYDRAULICS ENGINEER MARCUS LOWERY 044158 6/30/2022 3:10 PM EDT
DOCUMENT NOT CONSIDERED FINAL UNLESS ALL SIGNATURES COMPLETED	
TGS ENGINEERS 706 HILLSBOROUGH ST. SUITE 200 RALEIGH, NC 27603 PH (919) 773-8887 CORP. LICENSE NO.: C-0275	



REVISIONS

MATCHLINE -L- STA. 133+00.00 SEE SHEET 12

MATCHLINE -L- STA. 147+00.00 SEE SHEET 14

CHANNELIZATION RADII ARE 3' UNLESS OTHERWISE NOTED
RADII DIMENSIONS ARE TO FACE OF CURB (F/C) UNLESS OTHERWISE NOTED

SEE SHEETS 2B-1 THRU 2B-6 FOR INTERSECTION DETAILS

SEE SHEET 32 FOR -L- PROFILE

SEE SHEET 41 FOR -Y14- PROFILE

Projects\NICDOT\483830\Roadway\Proj\A-3830-rdy-psh-13.dgn