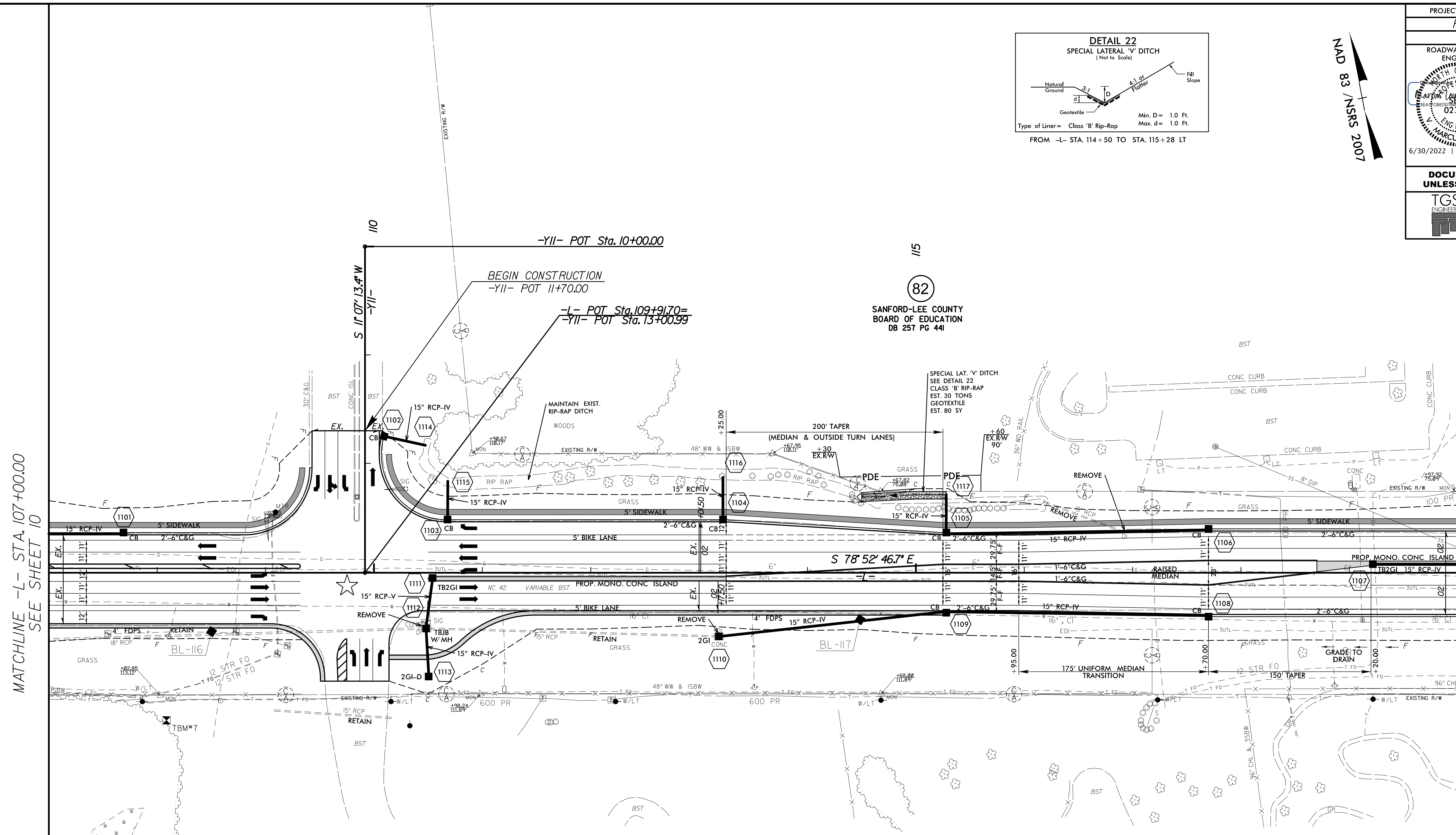
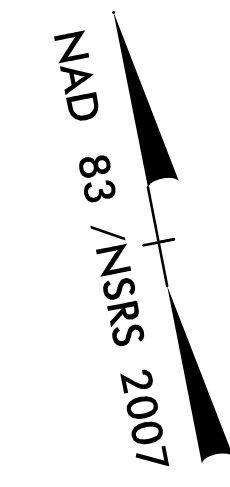
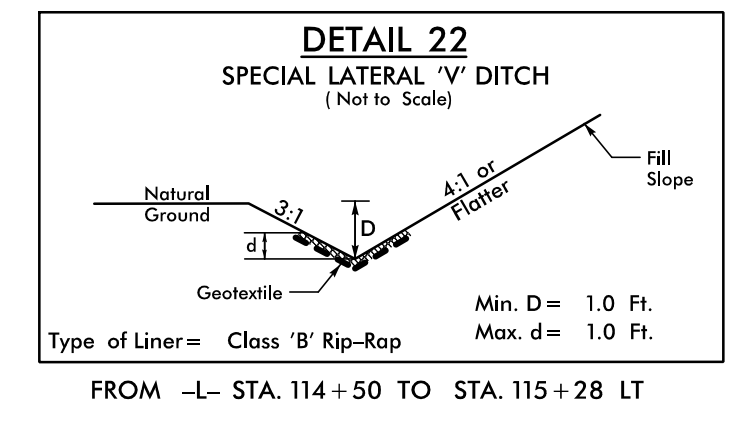


PROJECT REFERENCE NO. <b>R-3830</b>	SHEET NO. <b>11</b>
RW SHEET NO.	
ROADWAY DESIGN ENGINEER 	HYDRAULICS ENGINEER 
6/30/2022   3:01 PM EDT	6/30/2022   3:10 PM EDT
<b>DOCUMENT NOT CONSIDERED FINAL UNLESS ALL SIGNATURES COMPLETED</b>	
TGS ENGINEERS 706 HILLSBOROUGH ST., SUITE 200 RALEIGH, NC 27603 PH (919) 773-8887 CORP. LICENSE NO.: C-0275	

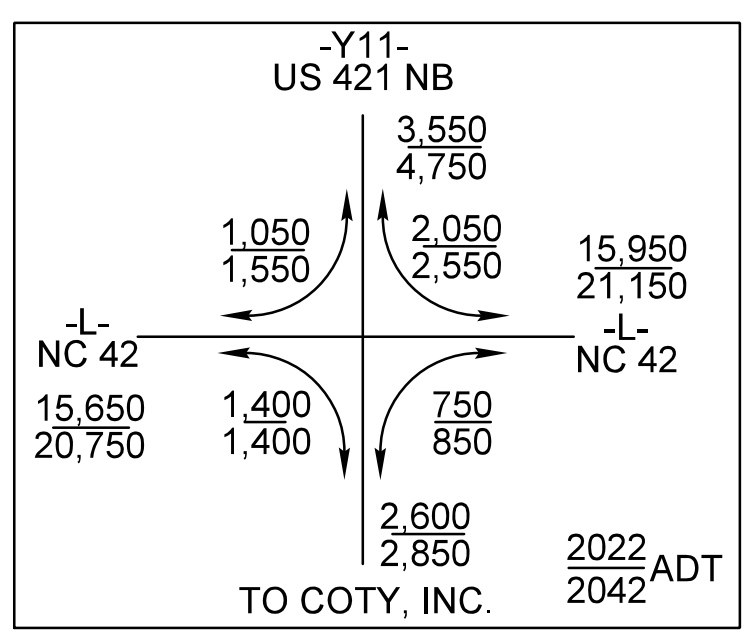


MATCHLINE -L- STA. 107+00.00  
SEE SHEET 10

MATCHLINE -L- STA. 120+00.00  
SEE SHEET 12

REVISIONS

COTY INC.  
DB 480 PG 925  
PC 2011 SL 90  
PC 7 SL 761



UPGRADE EXISTING SIGNAL

CHANNELIZATION RADII ARE 3' UNLESS OTHERWISE NOTED  
RADII DIMENSIONS ARE TO FACE OF CURB (FC) UNLESS OTHERWISE NOTED

SEE SHEETS 2B-1 THRU 2B-6  
FOR INTERSECTION DETAILS

SEE SHEET 31 FOR -L- PROFILE  
SEE SHEET 41 FOR -Y11- PROFILE

5/14/2022  
F:\Projects\NC\027418\Roadway\Proj\3830\rdy\_psh\_11.dgn  
User:tmlover