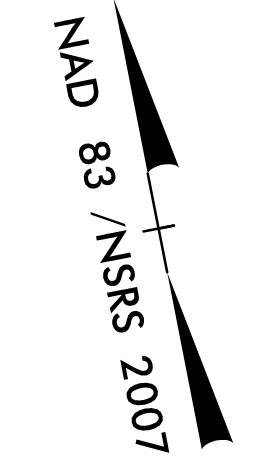
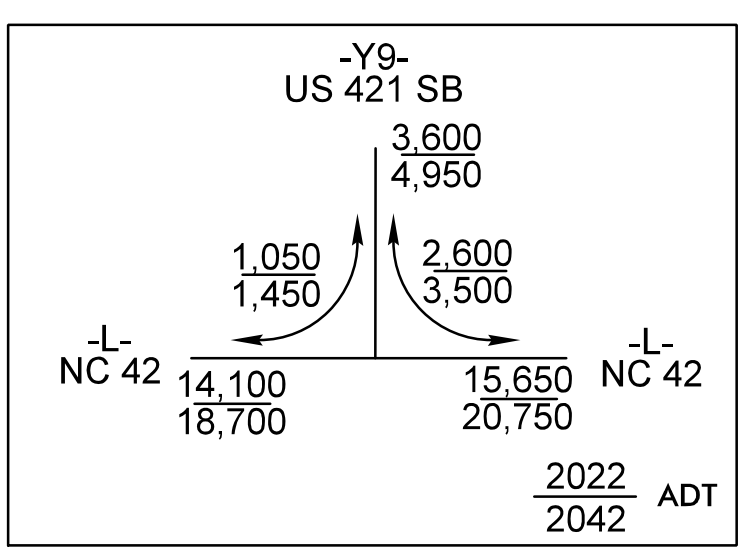


PROJECT REFERENCE NO. <b>R-3830</b>		SHEET NO. <b>10</b>	
RW SHEET NO.		HYDRAULICS ENGINEER	
ROADWAY DESIGN ENGINEER		ENGINEER	
6/30/2022   3:01 PM EDT		6/30/2022   3:10 PM EDT	
<b>DOCUMENT NOT CONSIDERED FINAL UNLESS ALL SIGNATURES COMPLETED</b>			
		TGS ENGINEERS 706 HILLSBOROUGH ST., SUITE 200 RALEIGH, NC 27603 PH (919) 773-8887 CORP. LICENSE NO.: C-0275	

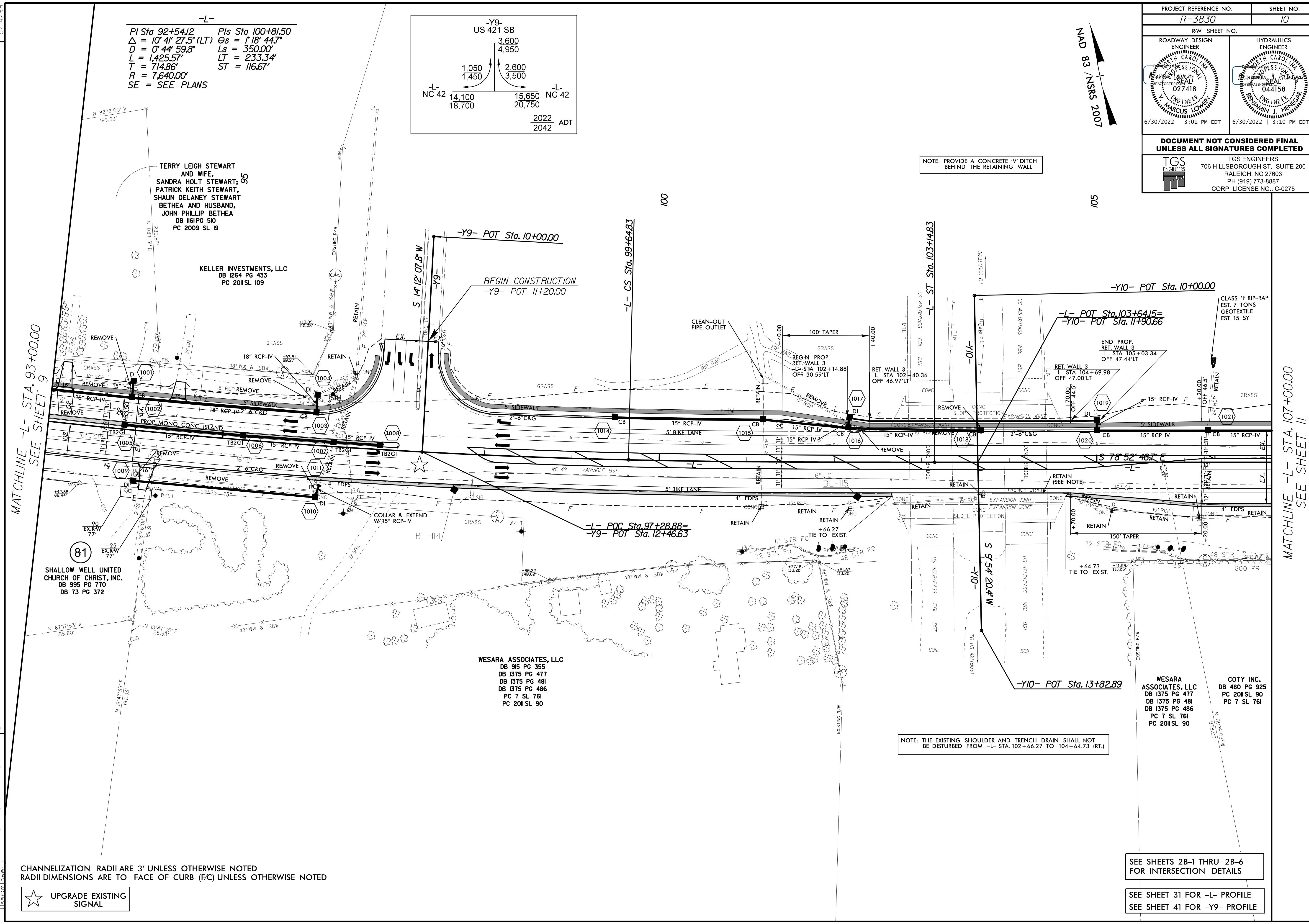


-L-  
 PI Sta 92+54.12 Pls Sta 100+81.50  
 $\Delta = 10^\circ 41' 27.5''$  (LT)  $\Theta_s = 1^\circ 18' 44.7''$   
 $D = 0^\circ 44' 59.8''$   $L_s = 350.00'$   
 $L = 1,425.57'$   $LT = 233.34'$   
 $T = 714.86'$   $ST = 116.67'$   
 $R = 7,640.00'$   
 SE = SEE PLANS



NOTE: PROVIDE A CONCRETE 'V' DITCH BEHIND THE RETAINING WALL

NOTE: THE EXISTING SHOULDER AND TRENCH DRAIN SHALL NOT BE DISTURBED FROM -L- STA. 102+66.27 TO 104+64.73 (RT.)



CHANNELIZATION RADII ARE 3' UNLESS OTHERWISE NOTED  
 RADII DIMENSIONS ARE TO FACE OF CURB (F/C) UNLESS OTHERWISE NOTED



SEE SHEETS 2B-1 THRU 2B-6 FOR INTERSECTION DETAILS

SEE SHEET 31 FOR -L- PROFILE  
 SEE SHEET 41 FOR -Y9- PROFILE

MATCHLINE -L- STA. 93+00.00 SEE SHEET 9

MATCHLINE -L- STA. 107+00.00 SEE SHEET 11

REVISIONS

E:\10\_2822\Projects\NC DOT\10\_2822\Roadway\Proj\N-3830-rdy\_psh\_10.dgn

5/14/2019