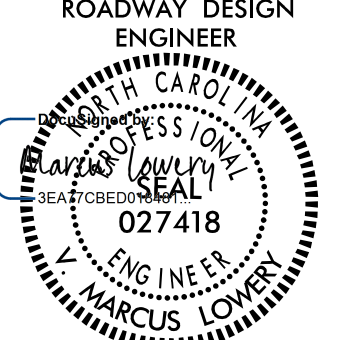
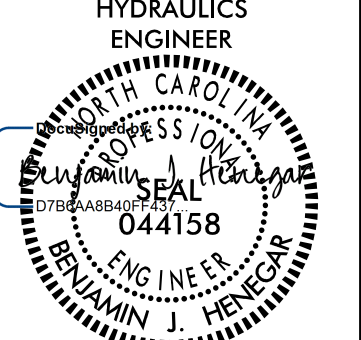
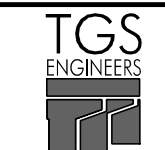
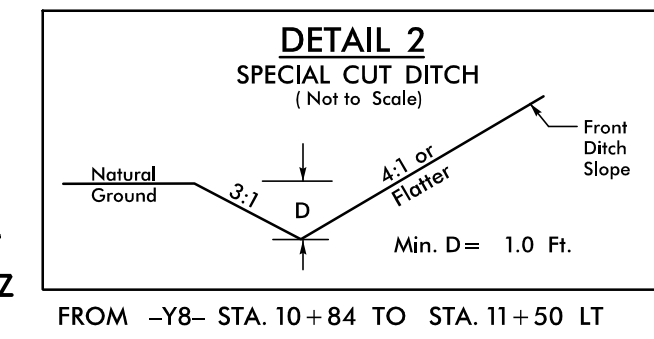
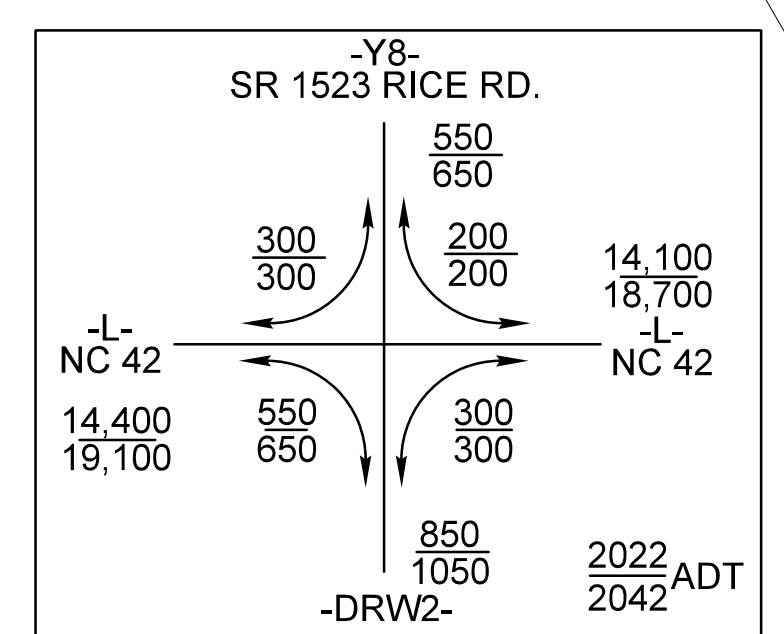


PROJECT REFERENCE NO. R-3830		SHEET NO. 08	
ROADWAY DESIGN ENGINEER		HYDRAULICS ENGINEER	
			
6/30/2022 3:01 PM EDT		6/30/2022 3:10 PM EDT	
DOCUMENT NOT CONSIDERED FINAL UNLESS ALL SIGNATURES COMPLETED			
 TGS ENGINEERS 706 HILLSBOROUGH ST., SUITE 200 RALEIGH, NC 27603 PH (919) 773-8887 CORP. LICENSE NO.: C-0275			



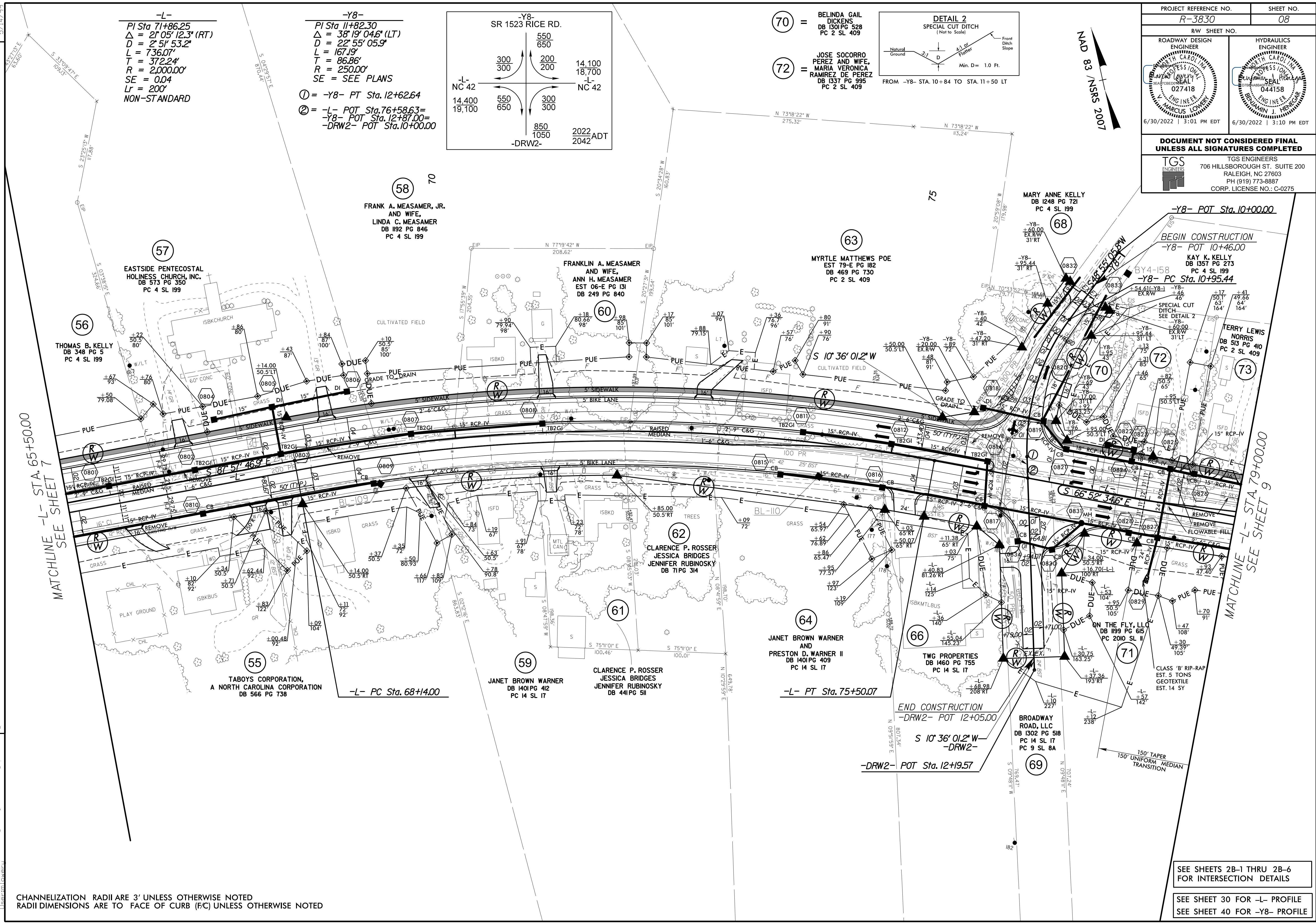
- 70** = BELINDA GAIL DICKENS
DB 1301 PG 528
PC 2 SL 409
- 72** = JOSE SOCORRO PEREZ AND WIFE, MARIA VERONICA RAMIREZ DE PEREZ
DB 1337 PG 995
PC 2 SL 409



-L-
 PI Sta 71+86.25
 $\Delta = 21^{\circ}05'12.3"$ (RT)
 $D = 2'51"53.2"$
 $L = 736.07'$
 $T = 372.24'$
 $R = 2,000.00'$
 $SE = 0.04$
 $Lr = 200'$
NON-STANDARD

-Y8-
 PI Sta 11+82.30
 $\Delta = 38^{\circ}19'04.6"$ (LT)
 $D = 22'55"05.9"$
 $L = 167.19'$
 $T = 86.86'$
 $R = 250.00'$
 $SE = \text{SEE PLANS}$

- ① = -Y8- PT Sta. 12+62.64
- ② = -L- POT Sta. 76+58.63 =
-Y8- POT Sta. 12+87.00 =
-DRW2- POT Sta. 10+00.00



CHANNELIZATION RADII ARE 3' UNLESS OTHERWISE NOTED
 RADII DIMENSIONS ARE TO FACE OF CURB (F/C) UNLESS OTHERWISE NOTED

SEE SHEETS 2B-1 THRU 2B-6 FOR INTERSECTION DETAILS

SEE SHEET 30 FOR -L- PROFILE
 SEE SHEET 40 FOR -Y8- PROFILE

REVISIONS

MATCHLINE -L- STA. 65+50.00
SEE SHEET 7

MATCHLINE -L- STA. 79+00.00
SEE SHEET 9

5/14/2022
 J:\projects\NCDOT\18-0830\Roadway\Pro\03-3830_rdy_psh_08.dgn
 User: jmlowery