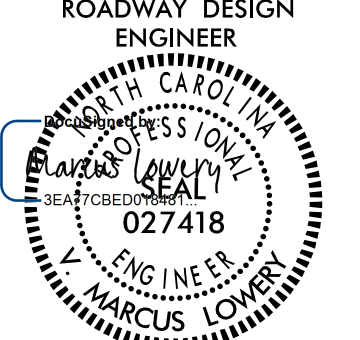
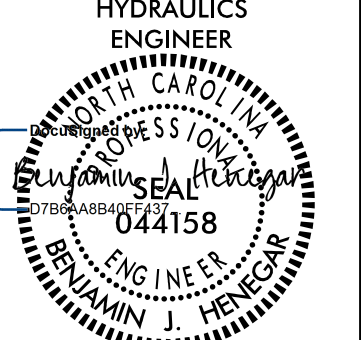
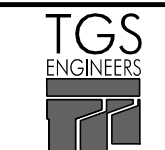
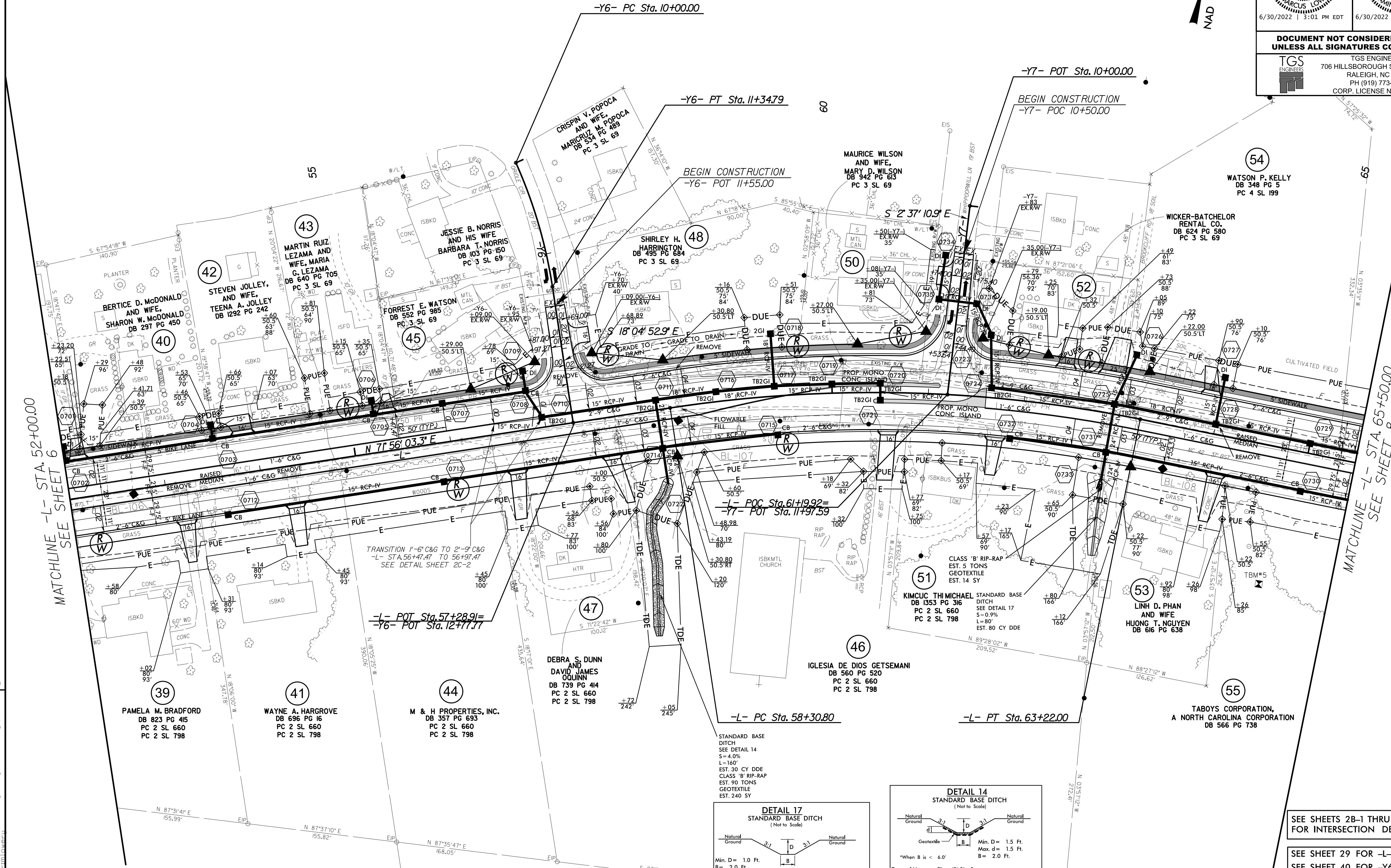
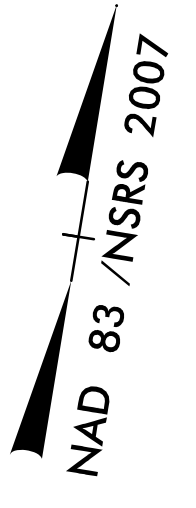


-L- PI Sta 60+78.95
 $\Delta = 20' 06" 09.9'$ (RT)
 $D = 4' 05" 33.2'$
 $L = 491.20'$
 $T = 248.15'$
 $R = 1,400.00'$
 $SE = 0.04$
 $Lr = 200'$
NON-STANDARD

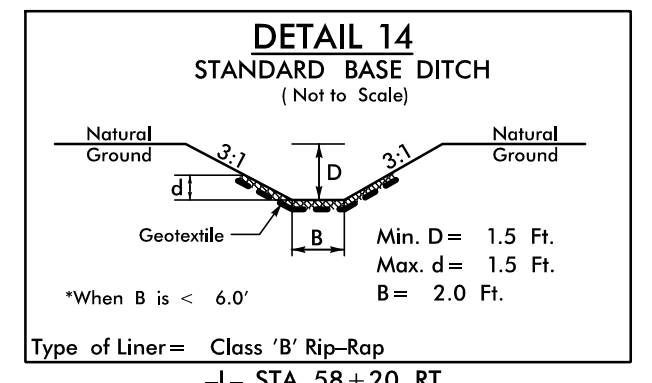
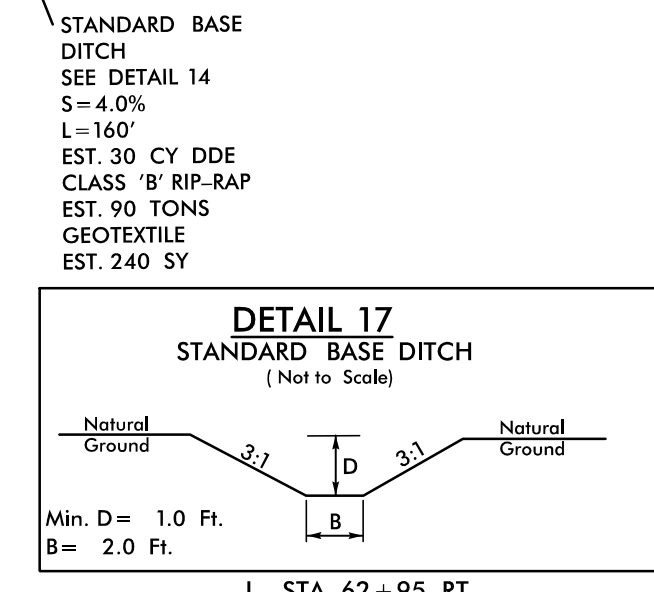
-Y6- PI Sta 10+67.81
 $\Delta = 15' 26' 45.5'$ (RT)
 $D = 11' 27' 33.0'$
 $L = 134.79'$
 $T = 67.81'$
 $R = 500.00'$
 $SE = \text{SEE PLANS}$

PROJECT REFERENCE NO. R-3830		SHEET NO. 07	
RW SHEET NO.		HYDRAULICS ENGINEER	
ROADWAY DESIGN ENGINEER		PROFESSIONAL SEAL	
			
6/30/2022 3:01 PM EDT		6/30/2022 3:10 PM EDT	
DOCUMENT NOT CONSIDERED FINAL UNLESS ALL SIGNATURES COMPLETED			
		TGS ENGINEERS 706 HILLSBOROUGH ST., SUITE 200 RALEIGH, NC 27603 PH (919) 773-8887 CORP. LICENSE NO.: C-0275	



MATCHLINE -L- STA. 52+00.00
SEE SHEET 6

MATCHLINE -L- STA. 65+50.00
SEE SHEET 8



SEE SHEETS 2B-1 THRU 2B-6 FOR INTERSECTION DETAILS

SEE SHEET 29 FOR -L- PROFILE
SEE SHEET 40 FOR -Y6- PROFILE
SEE SHEET 40 FOR -Y7- PROFILE

RADI DIMENSIONS ARE TO FACE OF CURB (FC) UNLESS OTHERWISE NOTED

REVISIONS

C:\projects\NCDD\Roadway\Proje\3830_rdy_psh_07.dgn