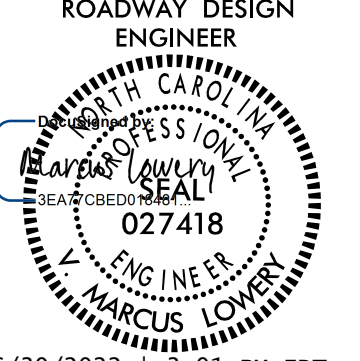
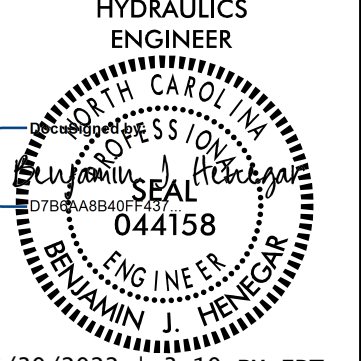
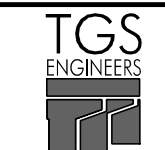


PROJECT REFERENCE NO. R-3830		SHEET NO. 06	
ROADWAY DESIGN ENGINEER		HYDRAULICS ENGINEER	
			
6/30/2022 3:01 PM EDT		6/30/2022 3:10 PM EDT	
DOCUMENT NOT CONSIDERED FINAL UNLESS ALL SIGNATURES COMPLETED			
 TGS ENGINEERS 706 HILLSBOROUGH ST., SUITE 200 RALEIGH, NC 27603 PH (919) 773-8887 CORP. LICENSE NO.: C-0275			

-L-
 PI Sta 42+84.18 Δ = 3° 08' 15.6" (RT)
 D = 0° 42' 58.3"
 L = 438.10'
 T = 219.11'
 R = 8,000.00'
 SE = NC

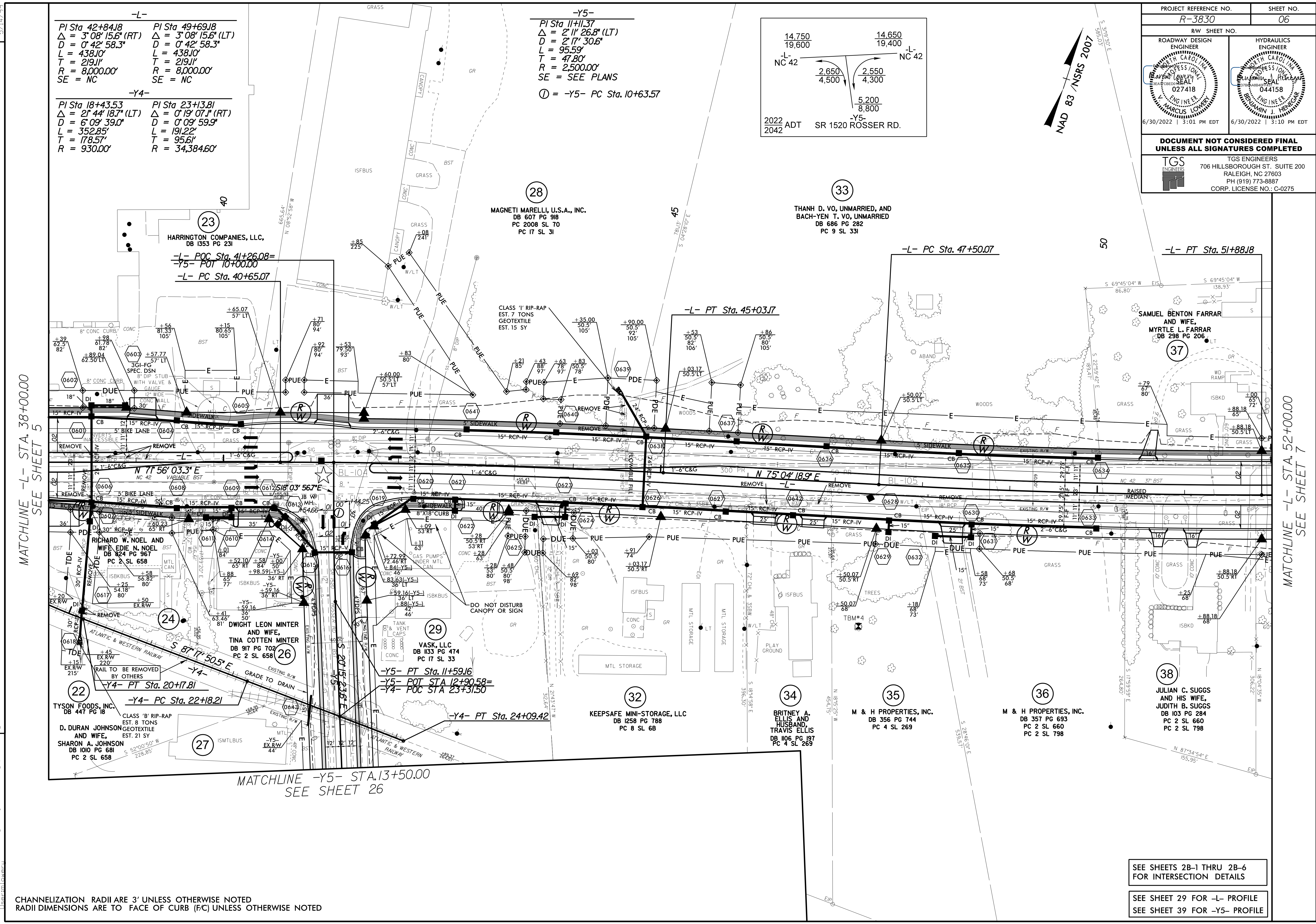
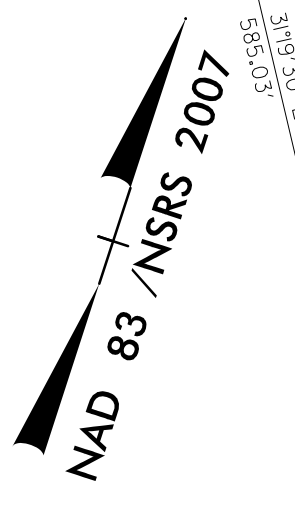
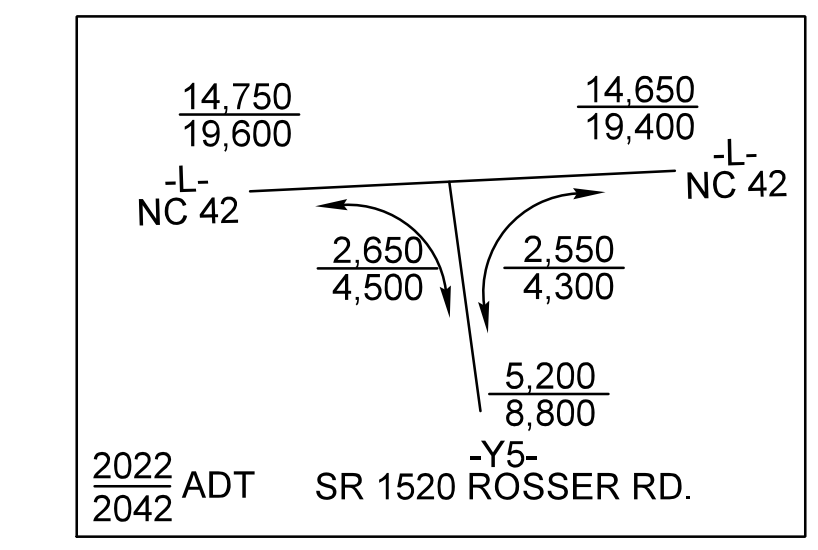
PI Sta 49+69.18 Δ = 3° 08' 15.6" (LT)
 D = 0° 42' 58.3"
 L = 438.10'
 T = 219.11'
 R = 8,000.00'
 SE = NC

-Y4-
 PI Sta 18+43.53 Δ = 2° 44' 18.7" (LT)
 D = 6° 09' 39.0"
 L = 352.85'
 T = 178.57'
 R = 930.00'

PI Sta 23+13.81 Δ = 0° 19' 07.1" (RT)
 D = 0° 09' 59.9"
 L = 191.22'
 T = 95.61'
 R = 34,384.60'

-Y5-
 PI Sta 11+11.37 Δ = 2° 11' 26.8" (LT)
 D = 2° 17' 30.6"
 L = 95.59'
 T = 47.80'
 R = 2,500.00'
 SE = SEE PLANS

① = -Y5- PC Sta. 10+63.57



MATCHLINE -L- STA. 38+00.00
SEE SHEET 5

MATCHLINE -L- STA. 52+00.00
SEE SHEET 7

MATCHLINE -Y5- STA. 13+50.00
SEE SHEET 26

CHANNELIZATION RADII ARE 3' UNLESS OTHERWISE NOTED
 RADII DIMENSIONS ARE TO FACE OF CURB (F/C) UNLESS OTHERWISE NOTED

SEE SHEETS 2B-1 THRU 2B-6
FOR INTERSECTION DETAILS

SEE SHEET 29 FOR -L- PROFILE
 SEE SHEET 39 FOR -Y5- PROFILE

REVISIONS

E:\10_2830\Roadway\Proje\3830_rdy_psh_06.dgn
 User: jml
 Date: 6/30/2022 3:10 PM