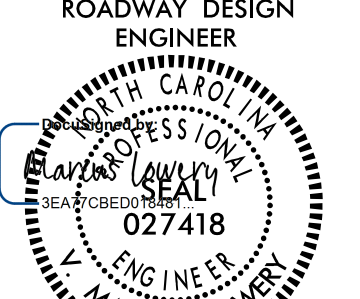

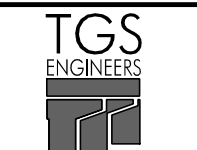
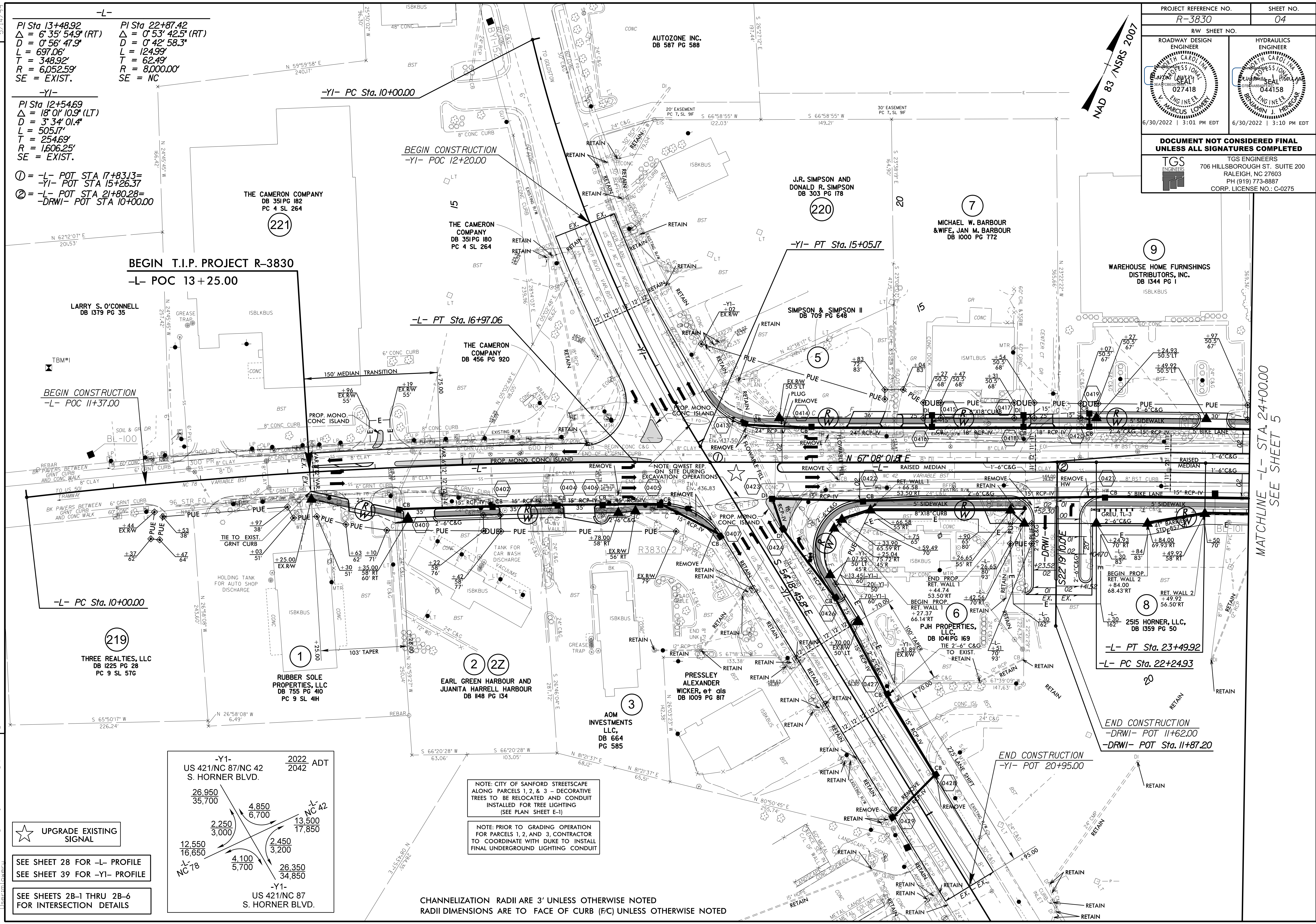
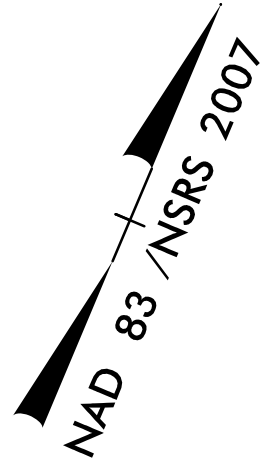


PROJECT REFERENCE NO. <b>R-3830</b>		SHEET NO. <b>04</b>	
ROADWAY DESIGN ENGINEER		HYDRAULICS ENGINEER	
			
6/30/2022   3:01 PM EDT		6/30/2022   3:10 PM EDT	
<b>DOCUMENT NOT CONSIDERED FINAL UNLESS ALL SIGNATURES COMPLETED</b>			
		TGS ENGINEERS 706 HILLSBOROUGH ST., SUITE 200 RALEIGH, NC 27603 PH (919) 773-8887 CORP. LICENSE NO.: C-0275	



**-L-**  
 PI Sta 13+48.92  
 $\Delta = 6' 35'' 54.9''$  (RT)  
 $D = 0' 56'' 47.9''$   
 $L = 697.06'$   
 $T = 348.92'$   
 $R = 6,052.59'$   
 SE = EXIST.

**-Y1-**  
 PI Sta 22+87.42  
 $\Delta = 0' 53'' 42.5''$  (RT)  
 $D = 0' 42'' 58.3''$   
 $L = 124.99'$   
 $T = 62.49'$   
 $R = 8,000.00'$   
 SE = NC

**-Y1-**  
 PI Sta 12+54.69  
 $\Delta = 18' 0'' 10.9''$  (LT)  
 $D = 3' 34'' 01.4''$   
 $L = 505.17'$   
 $T = 254.69'$   
 $R = 1,606.25'$   
 SE = EXIST.

① = -L- POT STA 17+83.13 =  
 -Y1- POT STA 15+26.37  
 ② = -L- POT STA 21+80.28 =  
 -DRWI- POT STA 10+00.00

**BEGIN T.I.P. PROJECT R-3830**  
 -L- POC 13+25.00

**BEGIN CONSTRUCTION**  
 -L- POC 11+37.00

**-L- PC Sta. 10+00.00**

**-Y1- PC Sta. 10+00.00**

**BEGIN CONSTRUCTION**  
 -Y1- POC 12+20.00

**-L- PT Sta. 16+97.06**

**-Y1- PT Sta. 15+05.17**

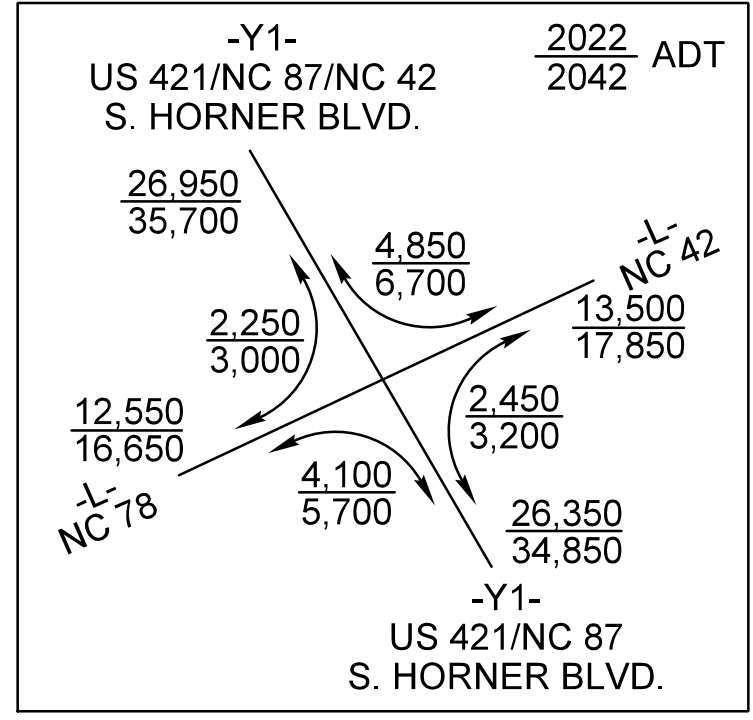
**-L- PT Sta. 23+49.92**  
**-L- PC Sta. 22+24.93**

**END CONSTRUCTION**  
 -DRWI- POT 11+62.00  
 -DRWI- POT Sta. 11+87.20

★ **UPGRADE EXISTING SIGNAL**

SEE SHEET 28 FOR -L- PROFILE  
 SEE SHEET 39 FOR -Y1- PROFILE

SEE SHEETS 2B-1 THRU 2B-6  
 FOR INTERSECTION DETAILS



NOTE: CITY OF SANFORD STREETScape ALONG PARCELS 1, 2, & 3 - DECORATIVE TREES TO BE RELOCATED AND CONDUIT INSTALLED FOR TREE LIGHTING (SEE PLAN SHEET E-1)

NOTE: PRIOR TO GRADING OPERATION FOR PARCELS 1, 2, AND 3, CONTRACTOR TO COORDINATE WITH DUKE TO INSTALL FINAL UNDERGROUND LIGHTING CONDUIT

CHANNELIZATION RADII ARE 3' UNLESS OTHERWISE NOTED  
 RADII DIMENSIONS ARE TO FACE OF CURB (F/C) UNLESS OTHERWISE NOTED

MATCHLINE -L- STA. 24+00.00  
SEE SHEET 5

REVISIONS

E:\10\_2823\Roadway\Project\Roadway\Proje\3830\_rdy\_psh\_04.dgn