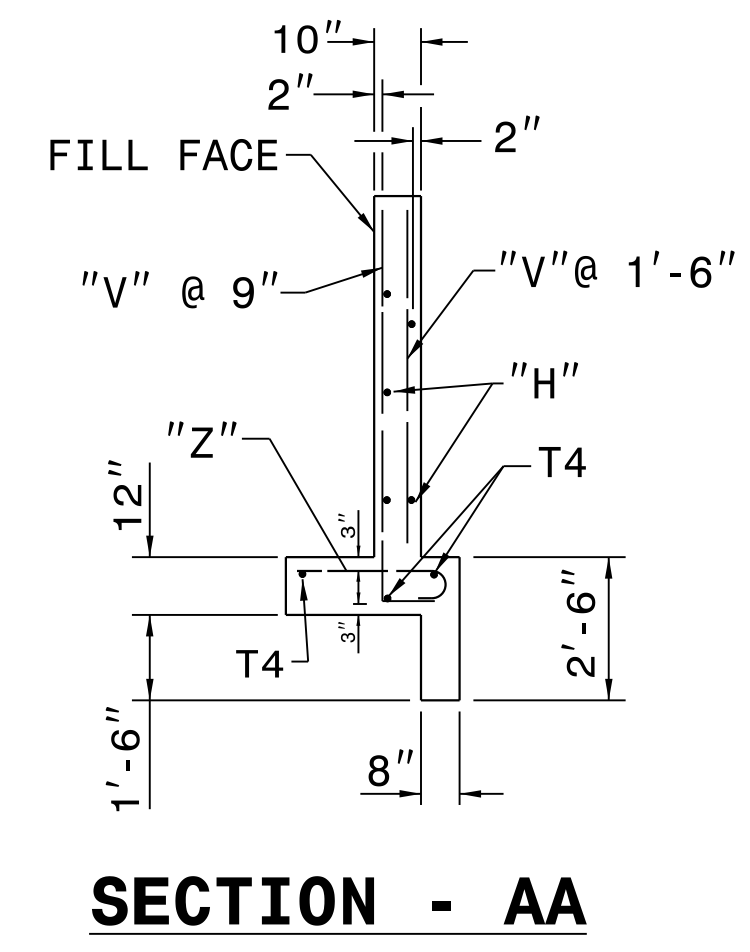
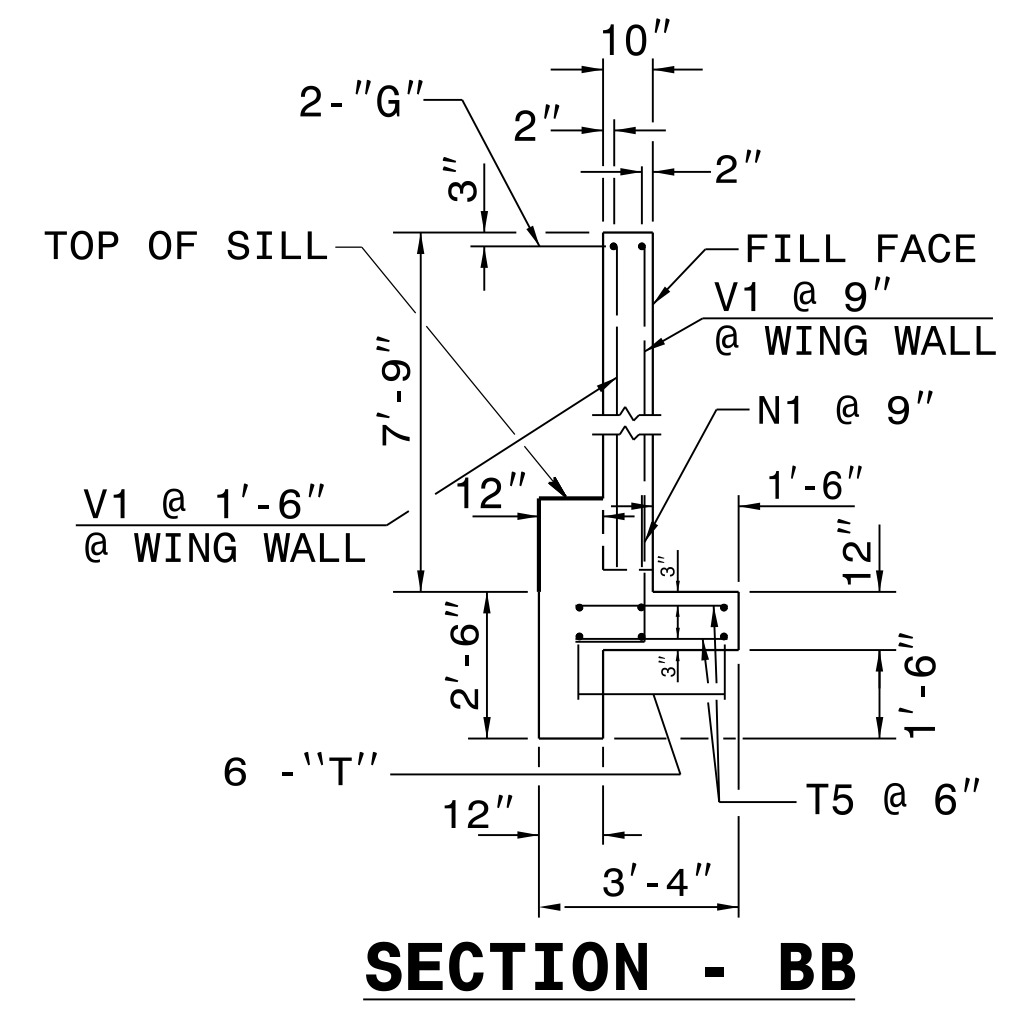
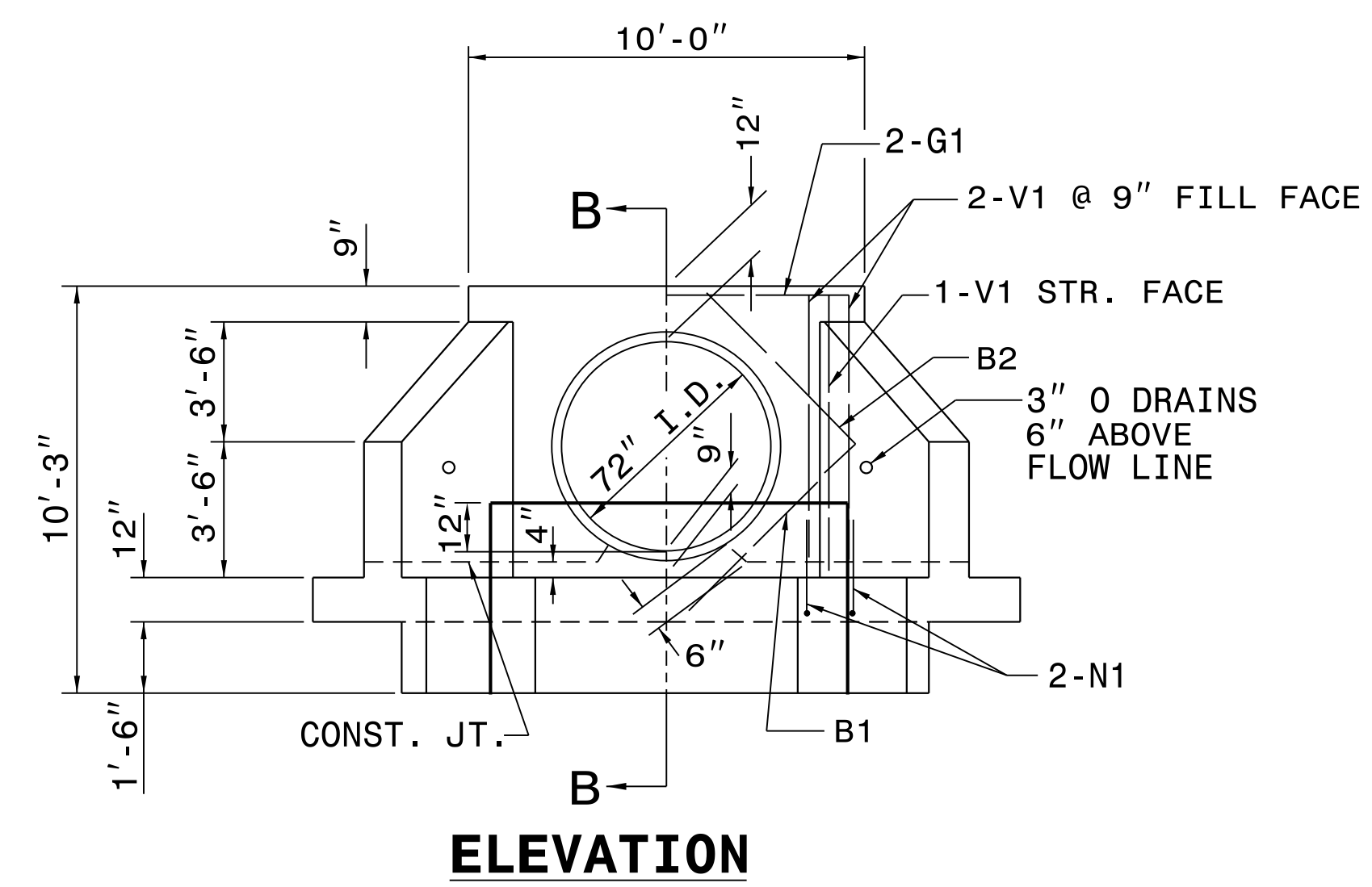


STATE OF NORTH CAROLINA
 DEPT. OF TRANSPORTATION
 DIVISION OF HIGHWAYS
 RALEIGH, N.C.

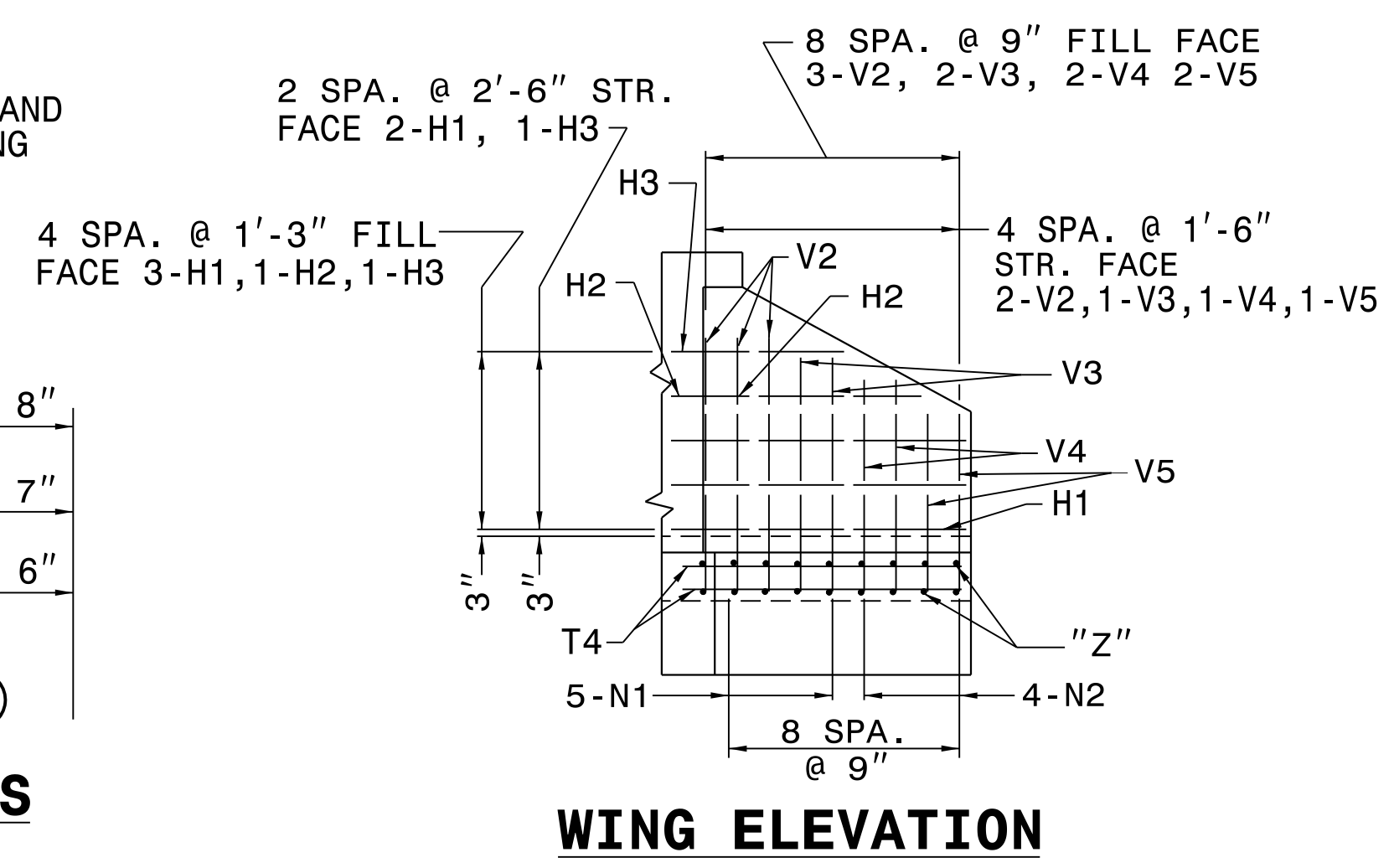
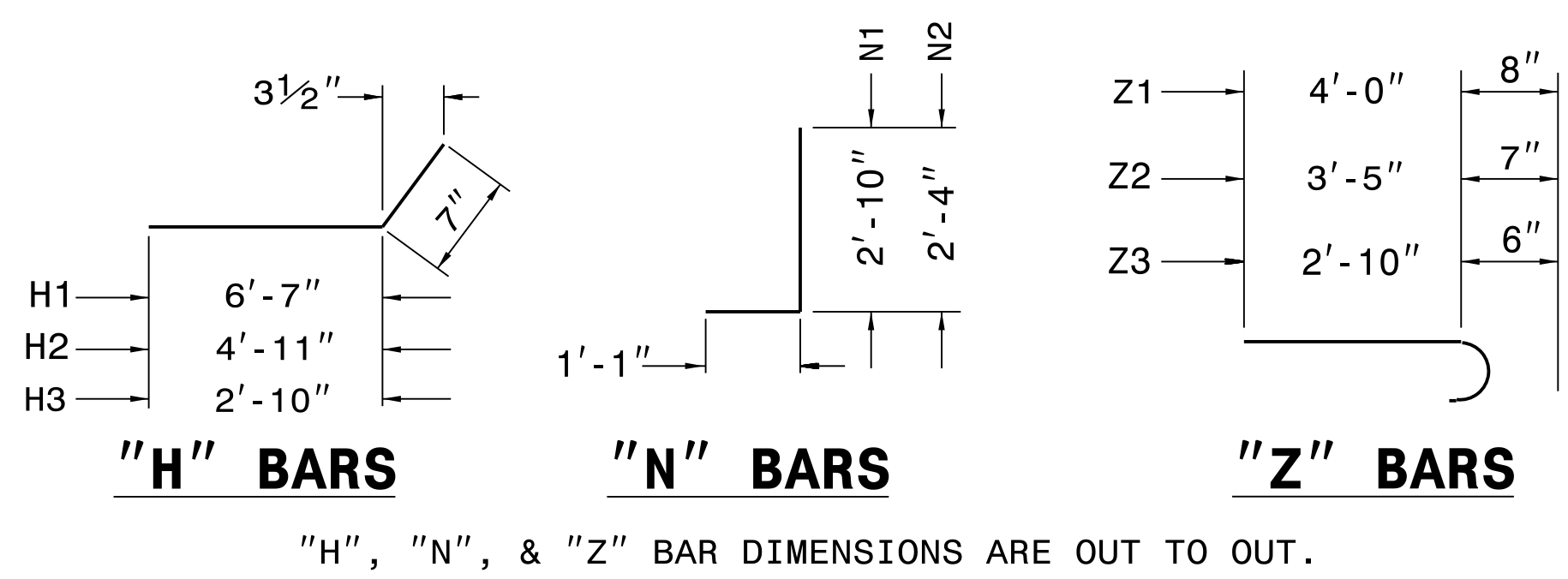
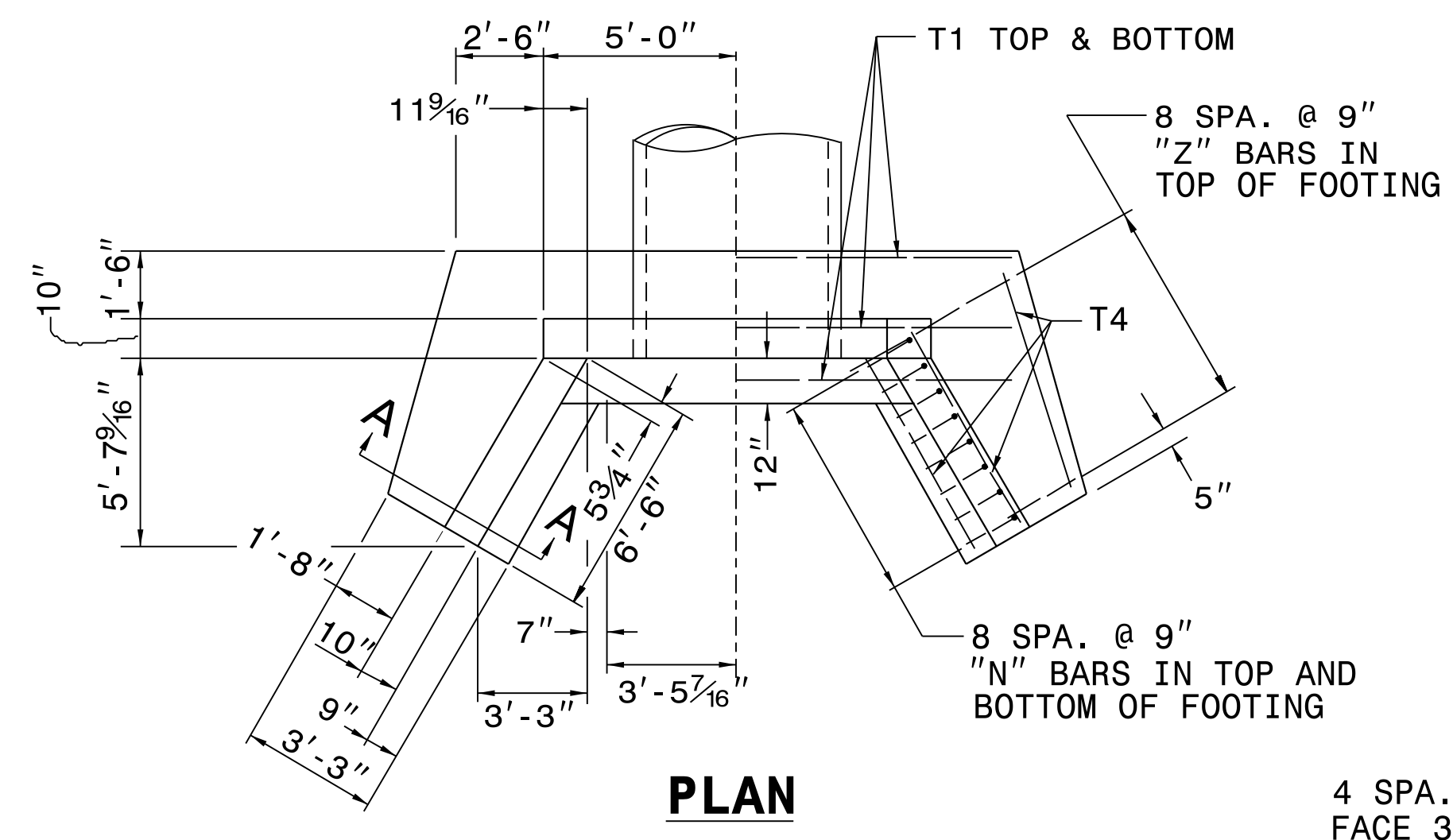
ENGLISH DETAIL DRAWING FOR
REINFORCED CONCRETE ENDWALL
 FOR SINGLE 72" PIPE 90° SKEW

SHEET 1 OF 2
838D39



SEE STD.# 838.45 FOR GENERAL NOTES.

BILL OF MATERIAL FOR ENDWALL				
REINF. STEEL			1 PIPE	
BAR	SIZE	LENGTH	NO.	WEIGHT
B1	#4	5'-6"	4	15
B2	#4	4'-6"	4	12
G1	#7	9'-8"	2	40
H1	#4	7'-2"	10	48
H2	#4	5'-6"	2	7
H3	#4	3'-5"	4	9
N1	#5	3'-11"	14	57
N2	#4	3'-5"	8	18
T1	#4	14'-6"	6	58
T4	#4	6'-9"	6	27
T5	#4	2'-6"	40	67
V1	#4	7'-3"	6	29
V2	#4	5'-10"	10	39
V3	#4	5'-0"	6	20
V4	#4	4'-1"	6	16
V5	#4	3'-2"	6	13
Z1	#6	4'-8"	6	42
Z2	#5	4'-0"	6	25
Z3	#4	3'-4"	6	13
REINF. STEEL LBS.			555	
CON./R.C. CU. YDS			7.1	



STATE OF NORTH CAROLINA
 DEPT. OF TRANSPORTATION
 DIVISION OF HIGHWAYS
 RALEIGH, N.C.

ENGLISH DETAIL DRAWING FOR
REINFORCED CONCRETE ENDWALL
 FOR SINGLE 72" PIPE 90° SKEW

SHEET 1 OF 2
838D39

DOCUMENT NOT CONSIDERED FINAL
UNLESS ALL SIGNATURES COMPLETED



6/30/2022 | 3:43 PM EDT

CONTRACTS STANDARDS AND DEVELOPMENT UNIT
 Office 919-707-6950 FAX 919-250-4119
DETAIL OF REINFORCED CONCRETE ENDWALL SILL
 ORIGINAL BY: _____ DATE: _____
 MODIFIED BY: K. KEMPF DATE: 2/9/17
 CHECKED BY: _____ DATE: _____
 FILE SPEC.: details\kkempf\english\838d3901sill.dgn

I7-111-2019_0712
 S:\Contracts\Special\Details\kkempf\english\838d3901sill.dgn
 J:\over-ton AT_CSD-292595