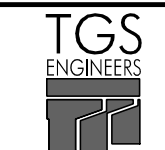


PROJECT REFERENCE NO. R-3830	SHEET NO. 2B-11
RW SHEET NO.	
ROADWAY DESIGN ENGINEER MARCUS LOVRY PROFESSIONAL ENGINEER NO. 027418 6/30/2022 3:01 PM EDT	
DOCUMENT NOT CONSIDERED FINAL UNLESS ALL SIGNATURES COMPLETED	
 TGS ENGINEERS 706 HILLSBOROUGH ST., SUITE 200 RALEIGH, NC 27603 PH (919) 773-8887 CORP. LICENSE NO.: C-0275	

NAD 83 / NSRS 2007

-L-

PI Sta 172+79.26 Δ = 27° 37' 35.0" (RT) D = 3' 49' 11.0" L = 723.26' T = 368.80' R = 1,500.00' SE = 0.04 Lr = 200'	PI Sta 183+58.98 Δ = 16° 57' 18.8" (LT) D = 3' 34' 51.6" L = 473.48' T = 238.48' R = 1,600.00' SE = 0.04 Lr = 132'
---	---

-Y16-

PI Sta 10+49.24 Δ = 1° 09' 01.0" (RT) D = 1° 10' 05.4" L = 98.47' T = 49.24' R = 4,904.81' V = 40 mph SE = SEE PLANS	PI Sta 12+59.91 Δ = 35° 47' 16.0" (LT) D = 11' 27' 33.0" L = 312.31' T = 161.44' R = 500.00' V = 40 mph SE = SEE PLANS
---	---

END TEMPORARY PAVEMENT
-L- STA 172+00 +/-

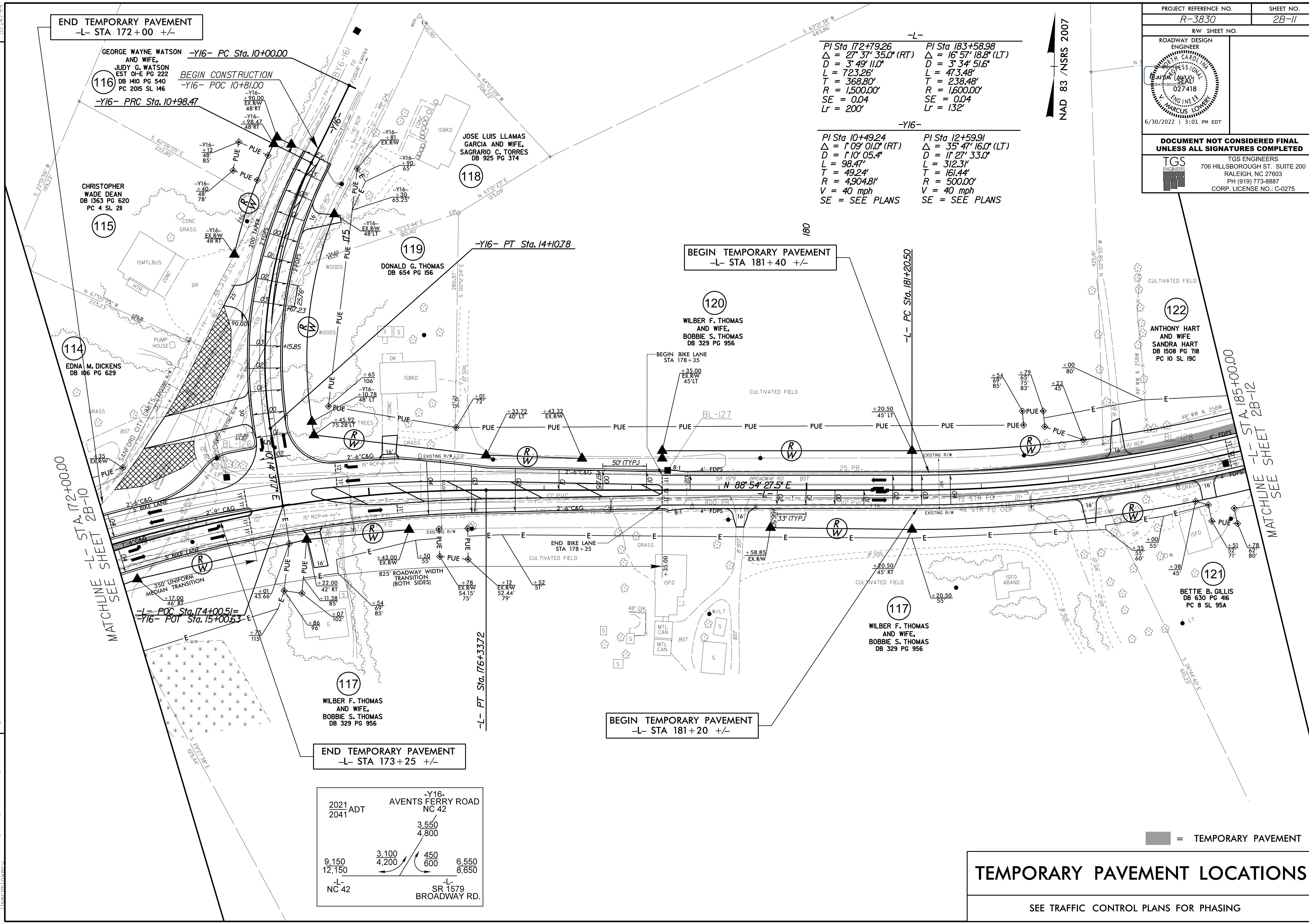
BEGIN TEMPORARY PAVEMENT
-L- STA 181+40 +/-

BEGIN TEMPORARY PAVEMENT
-L- STA 181+20 +/-

END TEMPORARY PAVEMENT
-L- STA 173+25 +/-

MATCHLINE -L- STA 172+00.00
SEE SHEET 2B-10

MATCHLINE -L- STA 185+00.00
SEE SHEET 2B-12



2021 ADT		-Y16- AVENTS FERRY ROAD NC 42	
9,150	3,100	450	6,550
12,150	4,200	600	8,650
-L- NC 42		-L- SR 1579 BROADWAY RD.	

TEMPORARY PAVEMENT LOCATIONS

SEE TRAFFIC CONTROL PLANS FOR PHASING

■ = TEMPORARY PAVEMENT

REVISIONS

4/1/2022
lecta\NCDOT\Projects\3830\Roadway\Proje\3830_rdy_psh_2b-11.dgn
User:tmlovey