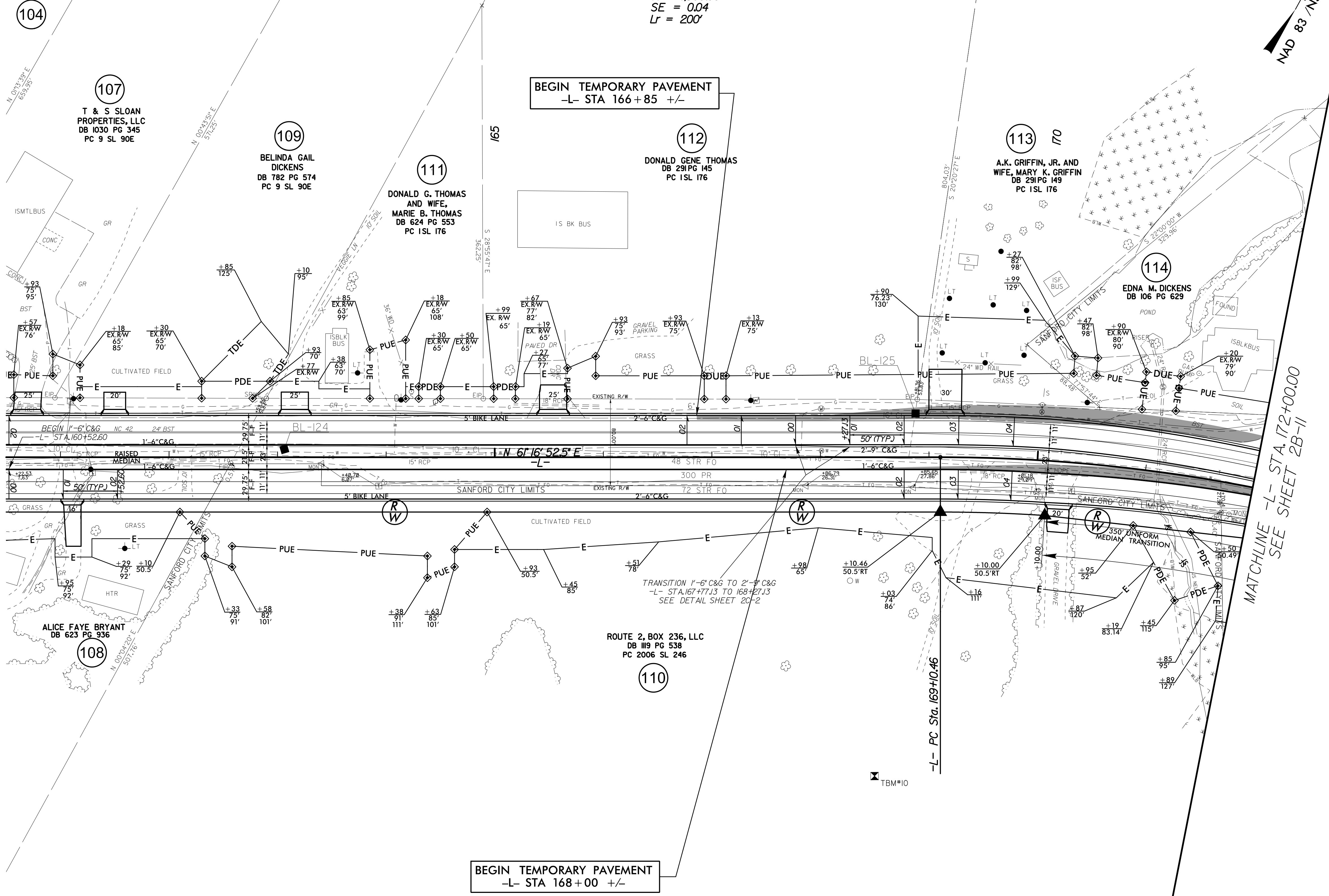
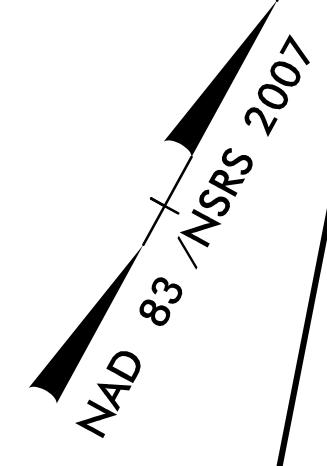


5/14/22

PROJECT REFERENCE NO. <b>R-3830</b>	SHEET NO. <b>2B-10</b>
RW SHEET NO.	
ROADWAY DESIGN ENGINEER	
6/30/2022   3:01 PM EDT	
DOCUMENT NOT CONSIDERED FINAL UNLESS ALL SIGNATURES COMPLETED	
TGS ENGINEERS 706 HILLSBOROUGH ST. SUITE 200 RALEIGH, NC 27603 PH (919) 773-8887 CORP. LICENSE NO.: C-0275	

-L-  
 PI Sta 172+79.26  
 $\Delta = 27^{\circ} 37' 35.0" (RT)$   
 $D = 3^{\circ} 49' 11.0"$   
 $L = 723.26'$   
 $T = 368.80'$   
 $R = 1,500.00'$   
 $SE = 0.04$   
 $Lr = 200'$



BEGIN TEMPORARY PAVEMENT  
 -L- STA 166+85 +/-

BEGIN TEMPORARY PAVEMENT  
 -L- STA 168+00 +/-

MATCHLINE -L- STA 172+00.00  
 SEE SHEET 2B-11

= TEMPORARY PAVEMENT

# TEMPORARY PAVEMENT LOCATIONS

SEE TRAFFIC CONTROL PLANS FOR PHASING

REVISIONS

projects\NC DOT\Projects\Roadway\Proje\3830\_rdy\_psh\_2b-10.dgn  
 User:tmlover1