

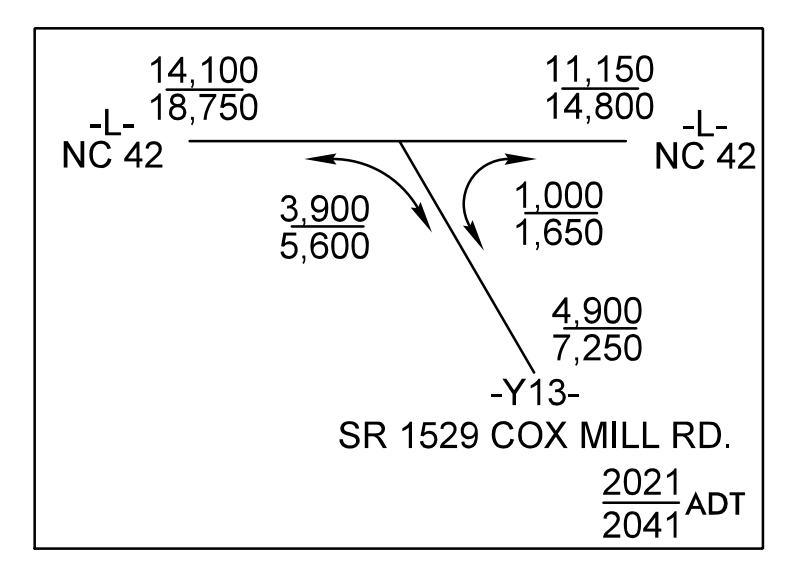
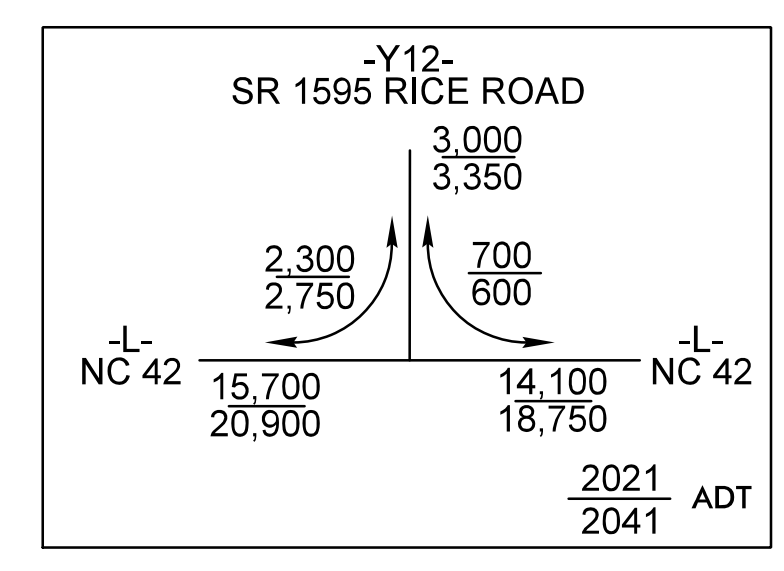
5/14/2022

PROJECT REFERENCE NO. <b>R-3830</b>	SHEET NO. <b>2B-9</b>
RW SHEET NO.	
ROADWAY DESIGN ENGINEER	
6/30/2022   3:01 PM EDT	
<b>DOCUMENT NOT CONSIDERED FINAL UNLESS ALL SIGNATURES COMPLETED</b>	
TGS ENGINEERS 706 HILLSBOROUGH ST., SUITE 200 RALEIGH, NC 27603 PH (919) 773-8887 CORP. LICENSE NO.: C-0275	

NAD 83 / NSRS 2007

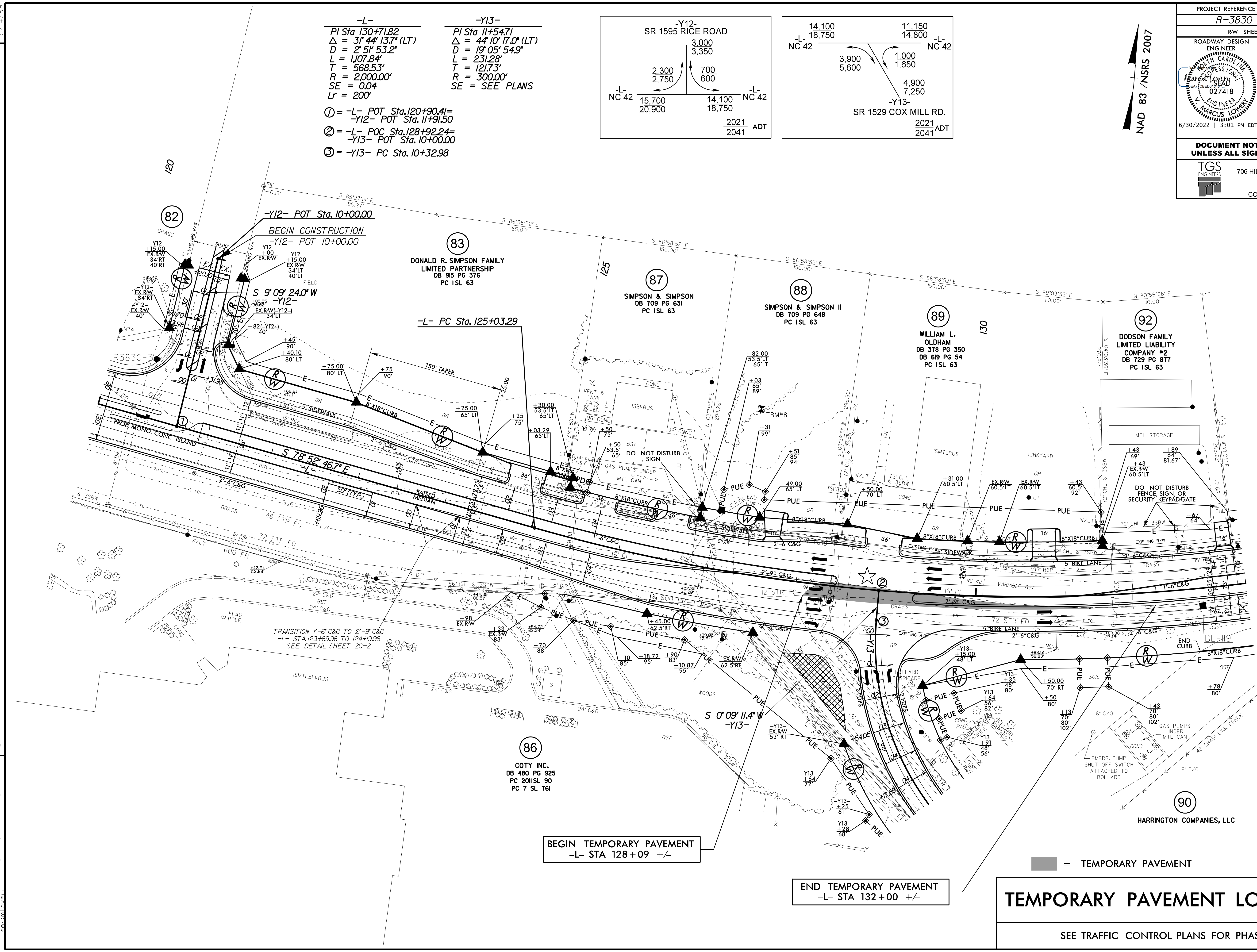
**-L-**  
 PI Sta 130+71.82  
 $\Delta = 31^{\circ}44'13.7"$  (LT)  
 $D = 2^{\circ}51'53.2"$   
 $L = 1,107.84'$   
 $T = 568.53'$   
 $R = 2,000.00'$   
 $SE = 0.04$   
 $Lr = 200'$

**-Y12-**  
 PI Sta 11+54.71  
 $\Delta = 44^{\circ}10'17.0"$  (LT)  
 $D = 19^{\circ}05'54.9"$   
 $L = 231.28'$   
 $T = 121.73'$   
 $R = 300.00'$   
 $SE = \text{SEE PLANS}$



- ① = -L- POT Sta. 120+90.41 = -Y12- POT Sta. 11+91.50
- ② = -L- POC Sta. 128+92.24 = -Y13- POT Sta. 10+00.00
- ③ = -Y13- PC Sta. 10+32.98

REVISIONS



# TEMPORARY PAVEMENT LOCATIONS

SEE TRAFFIC CONTROL PLANS FOR PHASING

Projects\NCDOT\11-3830A\_Roadway\ProJ\N-3830A\_rdy\_psh\_2b-9.dgn