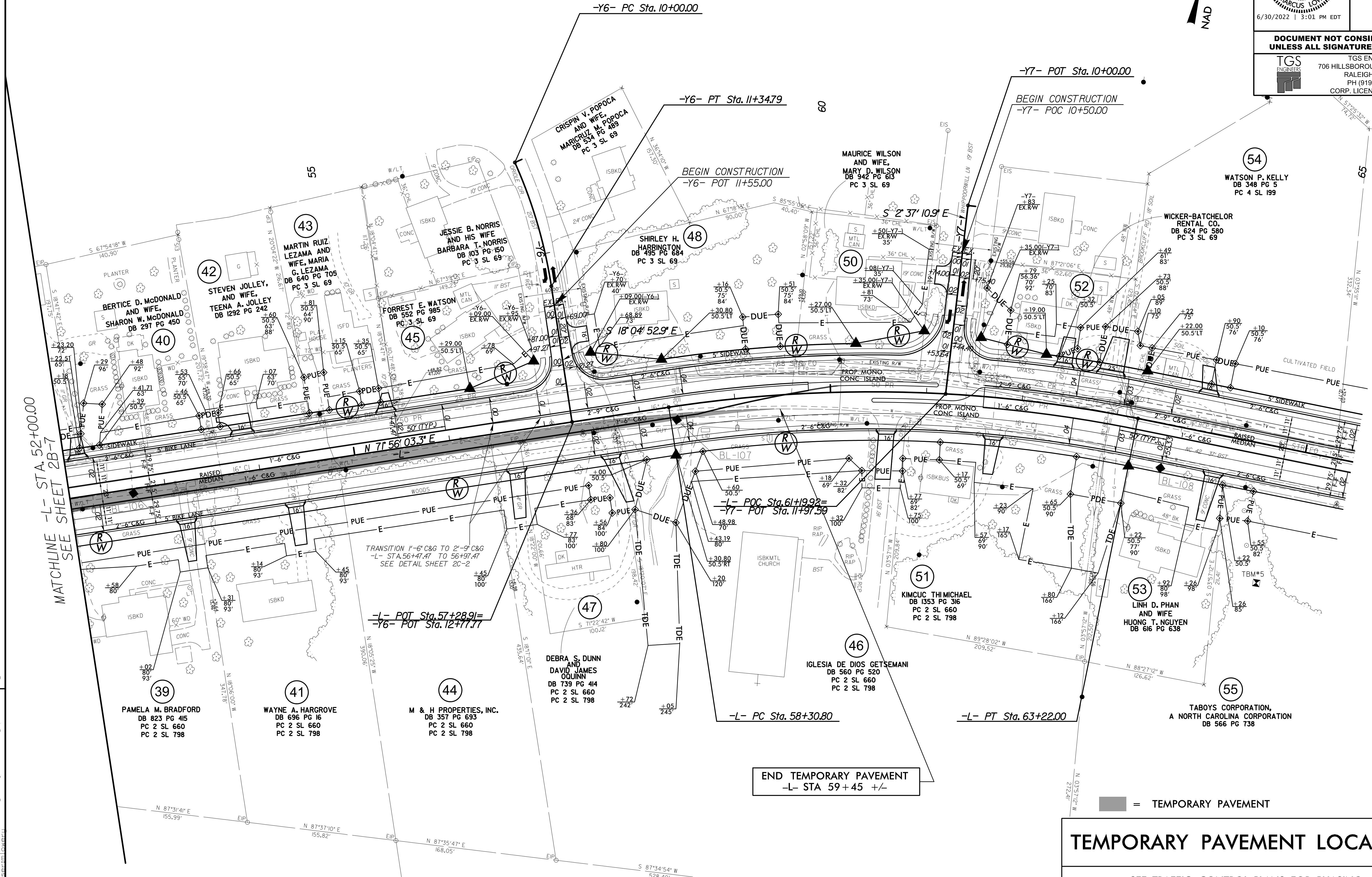


PROJECT REFERENCE NO. R-3830	SHEET NO. 2B-8
RW SHEET NO.	
ROADWAY DESIGN ENGINEER	
6/30/2022 3:01 PM EDT	
DOCUMENT NOT CONSIDERED FINAL	
UNLESS ALL SIGNATURES COMPLETED	
TGS ENGINEERS 706 HILLSBOROUGH ST., SUITE 200 RALEIGH, NC 27603 PH (919) 773-8887 CORP. LICENSE NO.: C-0275	

NAD 83 / NSRS 2007

-L- **-Y6-**

PI Sta 60+78.95 PI Sta 10+67.81
 $\Delta = 20' 06' 09.9''$ (RT) $\Delta = 15' 26' 45.5''$ (RT)
 $D = 4' 05' 33.2''$ $D = 11' 27' 33.0''$
 $L = 491.20'$ $L = 134.79'$
 $T = 248.15'$ $T = 67.81'$
 $R = 1,400.00'$ $R = 500.00'$
 $SE = 0.04$ $SE = SEE PLANS$
 $Lr = 200'$
NON-STANDARD



TEMPORARY PAVEMENT LOCATIONS

SEE TRAFFIC CONTROL PLANS FOR PHASING

REVISIONS

4/1/2022
 C:\Users\mlovey\Documents\Projects\Roadway\Proj\N-3830-rdy-psh-2b-f.dgn
 User: mlovey