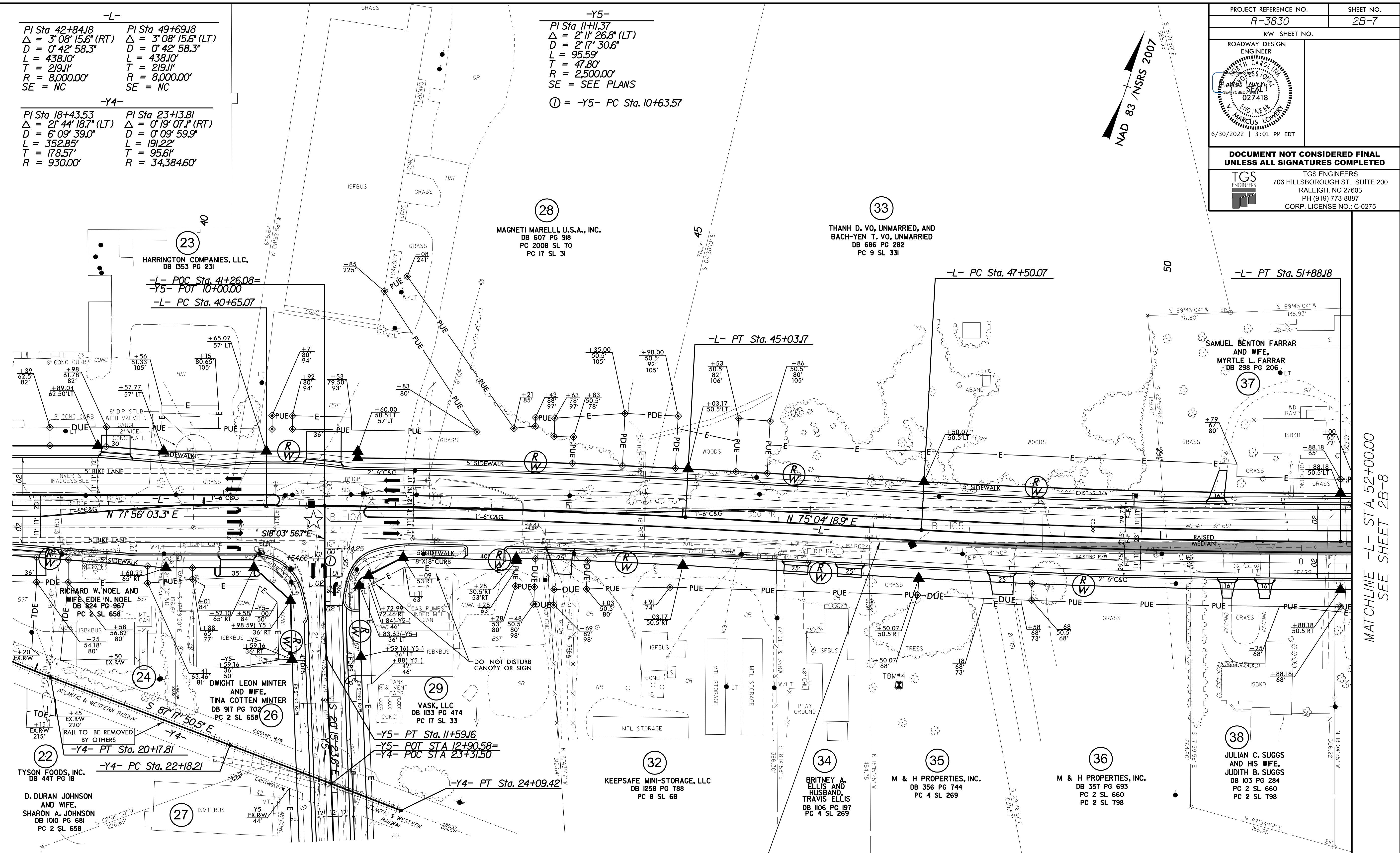
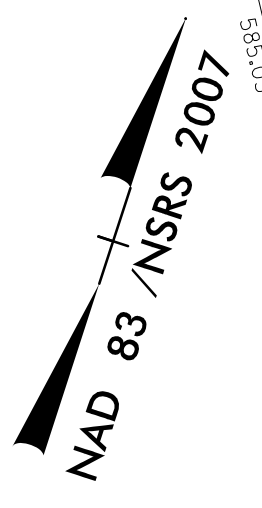


PROJECT REFERENCE NO. <b>R-3830</b>	SHEET NO. <b>2B-7</b>
RW SHEET NO.	
ROADWAY DESIGN ENGINEER	
6/30/2022   3:01 PM EDT	
DOCUMENT NOT CONSIDERED FINAL UNLESS ALL SIGNATURES COMPLETED	
TGS ENGINEERS 706 HILLSBOROUGH ST., SUITE 200 RALEIGH, NC 27603 PH (919) 773-8887 CORP. LICENSE NO.: C-0275	

**-L-**  
 PI Sta 42+84.18 Δ = 3° 08' 15.6" (RT) D = 0° 42' 58.3" L = 438.10' T = 219.11' R = 8,000.00' SE = NC  
 PI Sta 49+69.18 Δ = 3° 08' 15.6" (LT) D = 0° 42' 58.3" L = 438.10' T = 219.11' R = 8,000.00' SE = NC

**-Y4-**  
 PI Sta 18+43.53 Δ = 2° 44' 18.7" (LT) D = 6° 09' 39.0" L = 352.85' T = 178.57' R = 930.00'  
 PI Sta 23+13.81 Δ = 0° 19' 07.1" (RT) D = 0° 09' 59.9" L = 191.22' T = 95.61' R = 34,384.60'

**-Y5-**  
 PI Sta 11+11.37 Δ = 2° 11' 26.8" (LT) D = 2° 17' 30.6" L = 95.59' T = 47.80' R = 2,500.00' SE = SEE PLANS  
 Ⓣ = -Y5- PC Sta. 10+63.57



23 HARRINGTON COMPANIES, LLC.  
 DB 1353 PG 231  
 -L- POC Sta. 41+26.08=  
 -Y5- POT 10+00.00  
 -L- PC Sta. 40+65.07

28 MAGNETI MARELLI, U.S.A., INC.  
 DB 607 PG 918  
 PC 2008 SL 70  
 PC 17 SL 31

33 THANH D. VO, UNMARRIED, AND  
 BACH-YEN T. VO, UNMARRIED  
 DB 686 PG 282  
 PC 9 SL 331

37 SAMUEL BENTON FARRAR  
 AND WIFE,  
 MYRTLE L. FARRAR  
 DB 298 PG 206

24 RICHARD W. NOEL AND  
 WIFE, EDIE N. NOEL  
 DB 824 PG 561  
 PC 2 SL 658

29 VASK, LLC  
 DB 1133 PG 474  
 PC 17 SL 33  
 -Y5- PT Sta. 11+59.16  
 -Y5- POT STA 12+90.58=  
 -Y4- POC STA 23+31.50

22 TYSON FOODS, INC.  
 DB 447 PG 18  
 -Y4- PT Sta. 20+17.81  
 -Y4- PC Sta. 22+18.21

27 D. DURAN JOHNSON  
 AND WIFE,  
 SHARON A. JOHNSON  
 DB 1010 PG 681  
 PC 2 SL 658

32 KEEPSAFE MINI-STORAGE, LLC  
 DB 1258 PG 788  
 PC 8 SL 68

34 BRITNEY A.  
 ELLIS AND  
 HUSBAND,  
 TRAVIS ELLIS  
 DB 1106 PG 197  
 PC 4 SL 269

35 M & H PROPERTIES, INC.  
 DB 356 PG 744  
 PC 4 SL 269

36 M & H PROPERTIES, INC.  
 DB 357 PG 693  
 PC 2 SL 660  
 PC 2 SL 798

38 JULIAN C. SUGGS  
 AND HIS WIFE,  
 JUDITH B. SUGGS  
 DB 103 PG 284  
 PC 2 SL 660  
 PC 2 SL 798

BEGIN TEMPORARY PAVEMENT  
 -L- STA 47+05 +/-

█ = TEMPORARY PAVEMENT

# TEMPORARY PAVEMENT LOCATIONS

SEE TRAFFIC CONTROL PLANS FOR PHASING

MATCHLINE -L- STA. 52+00.00  
 SEE SHEET 2B-8

REVISIONS

5/7/14/19/99  
 4/11/2022  
 I:\Projects\2022\Roadway\Proje\N-3830-rcdy-psh-2b-7.dgn  
 User:tmlover