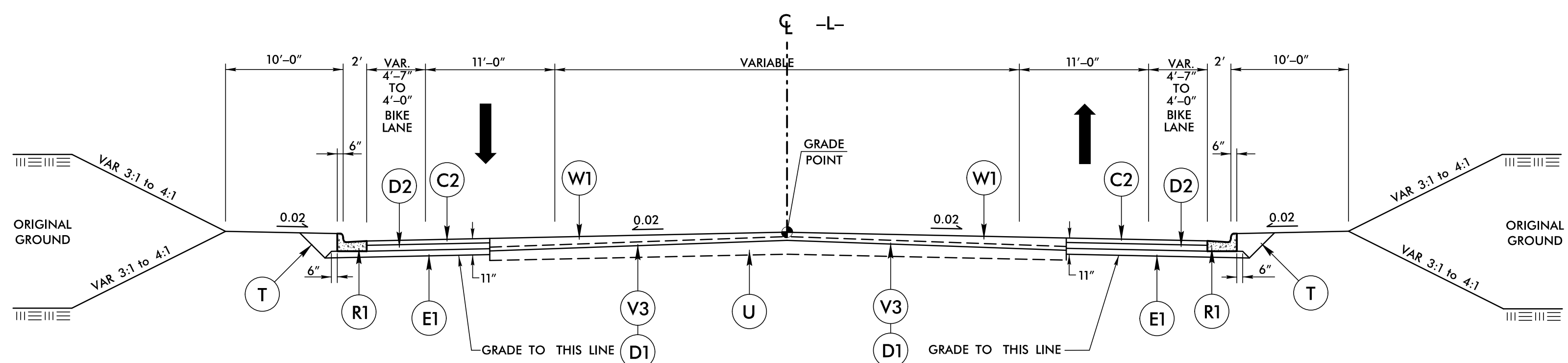
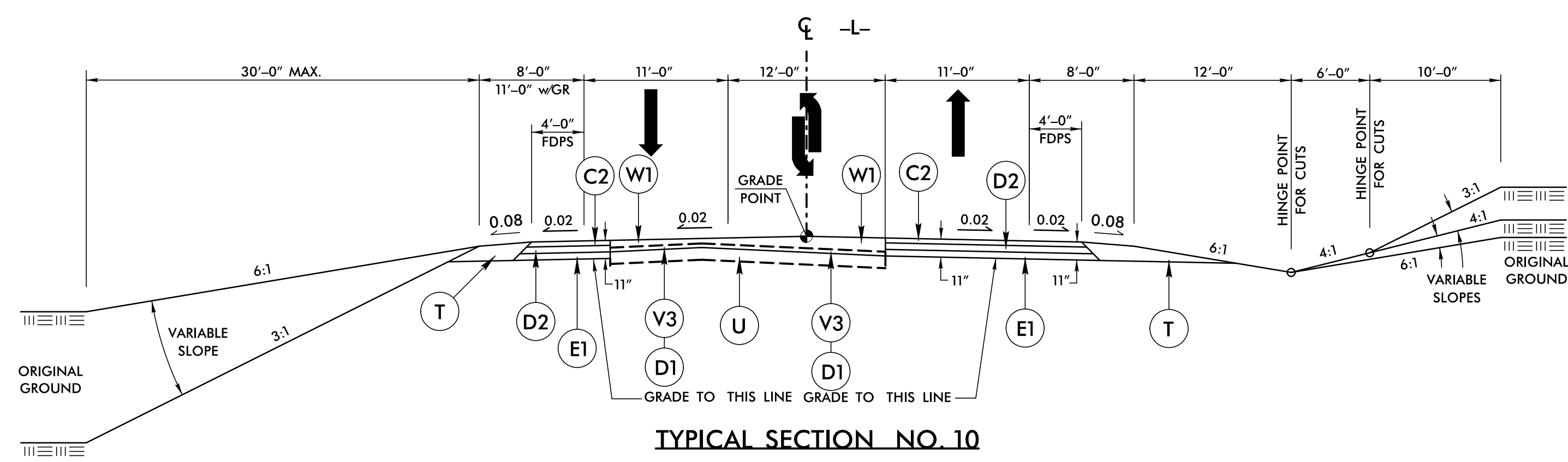


6/22/22



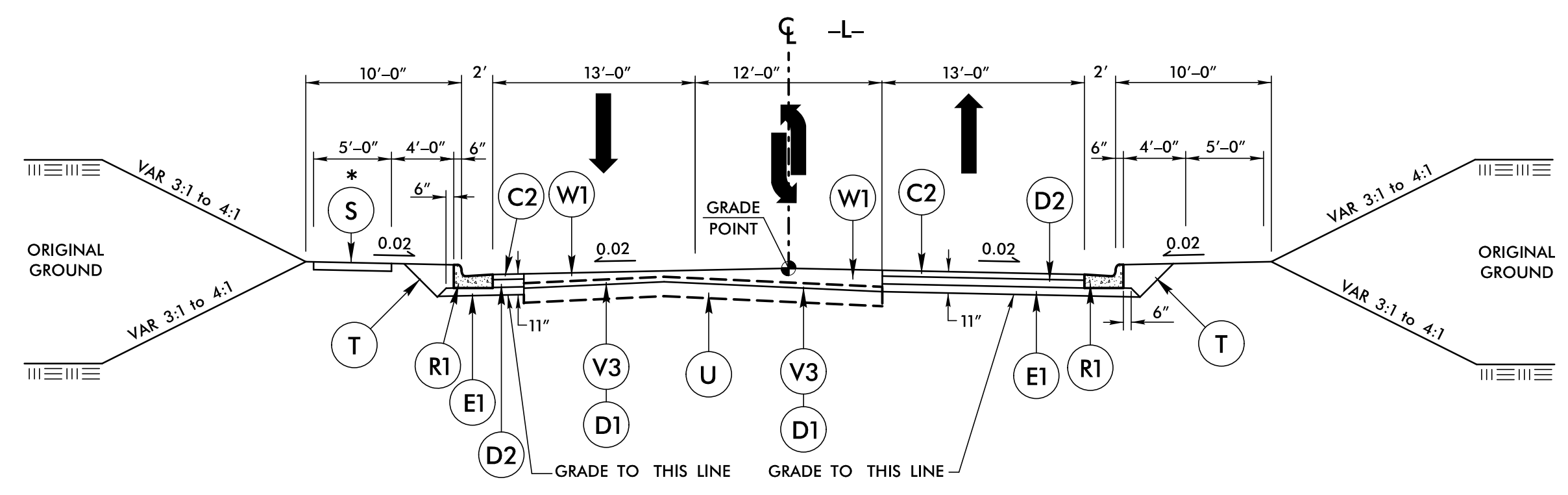
TYPICAL SECTION NO. 9

USE TYPICAL SECTION NO. 9:
FROM -L- STA. 173+60.00 TO 178+35.00



TYPICAL SECTION NO. 10

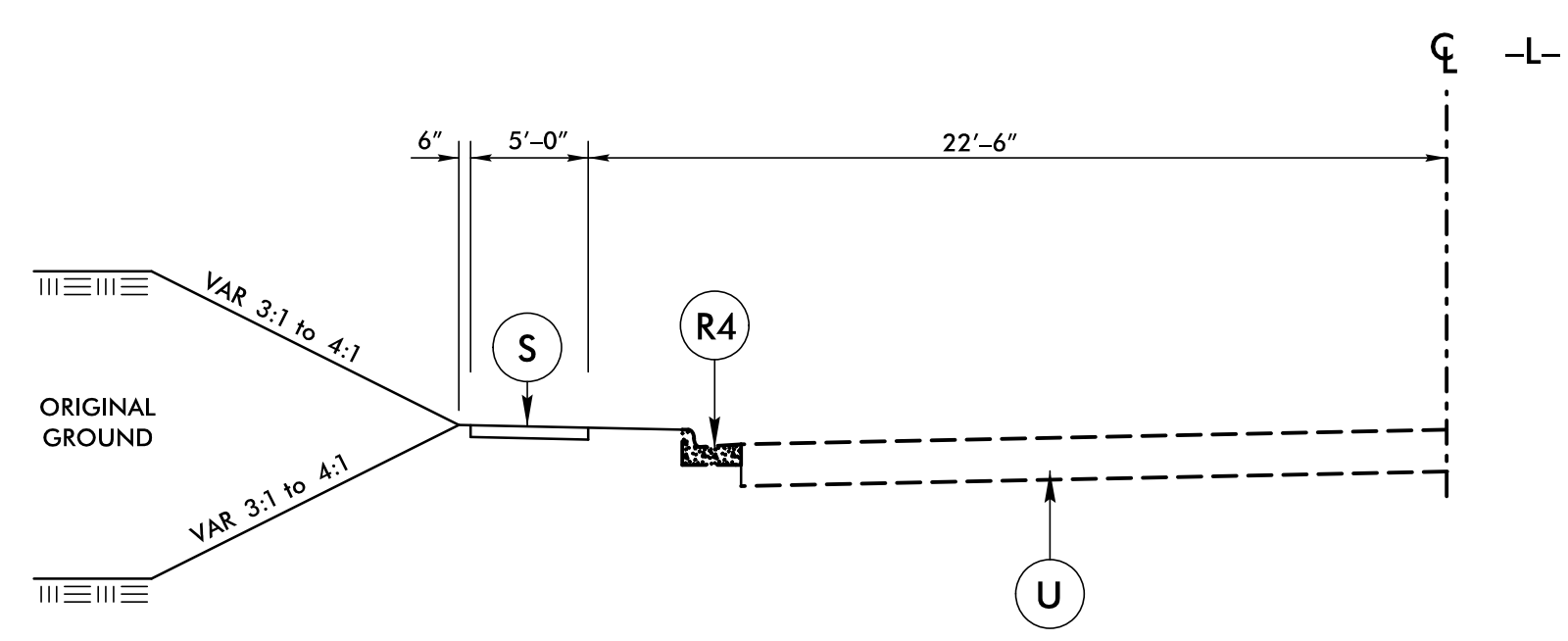
USE TYPICAL SECTION NO. 10:
FROM -L- STA. 178+35.00 TO 254+35.00



TYPICAL SECTION NO. 11

USE TYPICAL SECTION NO. 11:
FROM -L- STA. 254+35.00 TO 292+00.00

* SIDEWALK LOCATIONS:
FROM -L- STA. 280+08.39 TO 292+00.00 LT.
FROM -L- STA. 279+67.00 TO 292+00.00 RT.



TYPICAL SECTION NO. 12

USE TYPICAL SECTION NO. 12:
FROM -L- STA. 292+00.00 TO 304+90.86 LT.

PROJECT REFERENCE NO. R-3830	SHEET NO. 2A-5
ROADWAY DESIGN ENGINEER MARCUS LOWERY 027418 6/30/2022 2:57 PM EDT	PAVEMENT DESIGN ENGINEER CLAYTON S. MORRISON 022896 7/1/2022 8:10 AM PDT
DOCUMENT NOT CONSIDERED FINAL UNLESS ALL SIGNATURES COMPLETED	
TGS ENGINEERS 706 HILLSBOROUGH ST. SUITE 200 RALEIGH, NC 27603 PH (919) 773-8887 CORP. LICENSE NO.: C-0275	

C1	1 1/2" S9.5C
C2	3" S9.5C
C3	VAR. S9.5C
C4	3" S9.5B
C5	VAR. S9.5B
D1	2 1/2" I19.0C
D2	4" I19.5C
D3	VAR. I19.0C
E1	4" B25.0C
E2	5 1/2" B25.0C
E3	VAR. B25.0C
J1	8" ABC
J2	6" ABC
L	CLASS IV STAB.
N	GEOTEXTILE
P	PRIME COAT
R1	2'-6" C & G
R2	1'-6" C & G
R3	5" CONC. ISLAND
R4	EXIST. C & G
R5	2'-9" C & G
R6	8"X18" CURB
R7	GRANITE CURB
S	4" SIDEWALK
T	EARTH MATERIAL
U	EXIST. PAVEMENT
V1	1 1/2" MILLING
V2	3" MILLING
V3	2 1/2" MILLING
W1	WEDGING
W2	WEDGING
W3	WEDGING

4/8/2022
 C:\p20\cts\NCDOT\R-3830\Roadway\Proc\R3830_RdJ_tjg.dgn
 User: mlowery