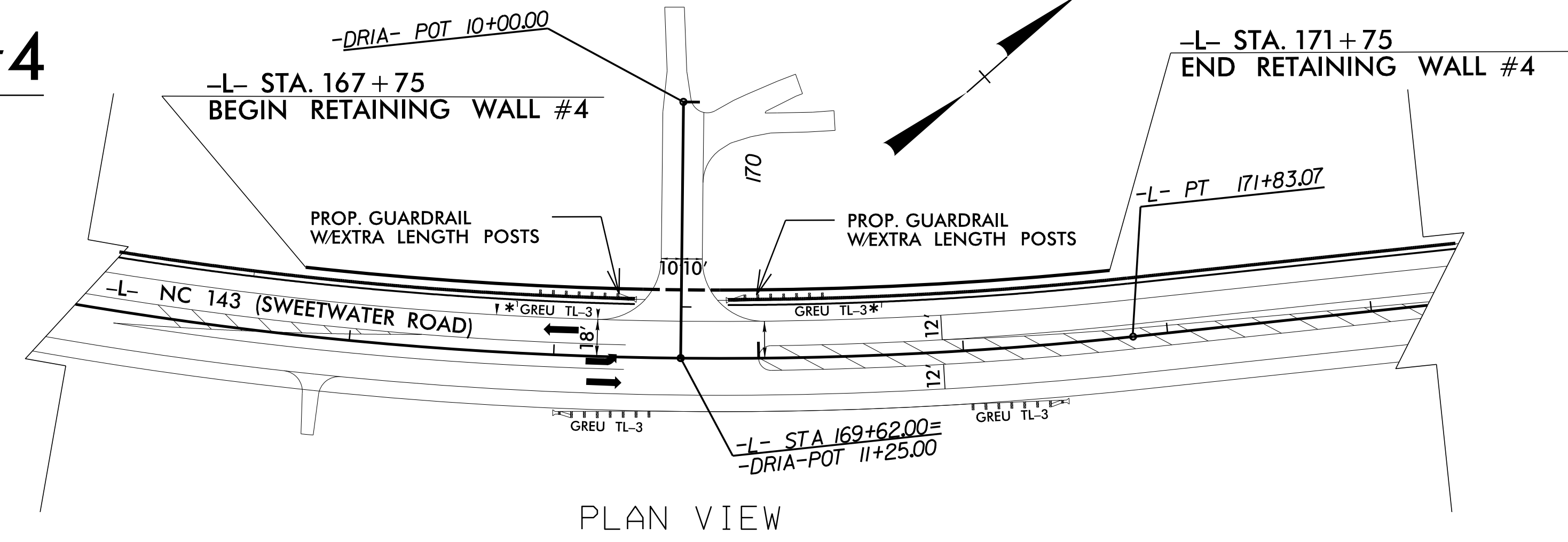


RETAINING WALL #4



GEOTECHNICAL ENGINEER

ENGINEER

PROFESSIONAL SEAL 041986

D. MATTHEW BREWER

DocuSigned by: D. Matthew Brewer 4/28/2022

DATE: 4/28/2022

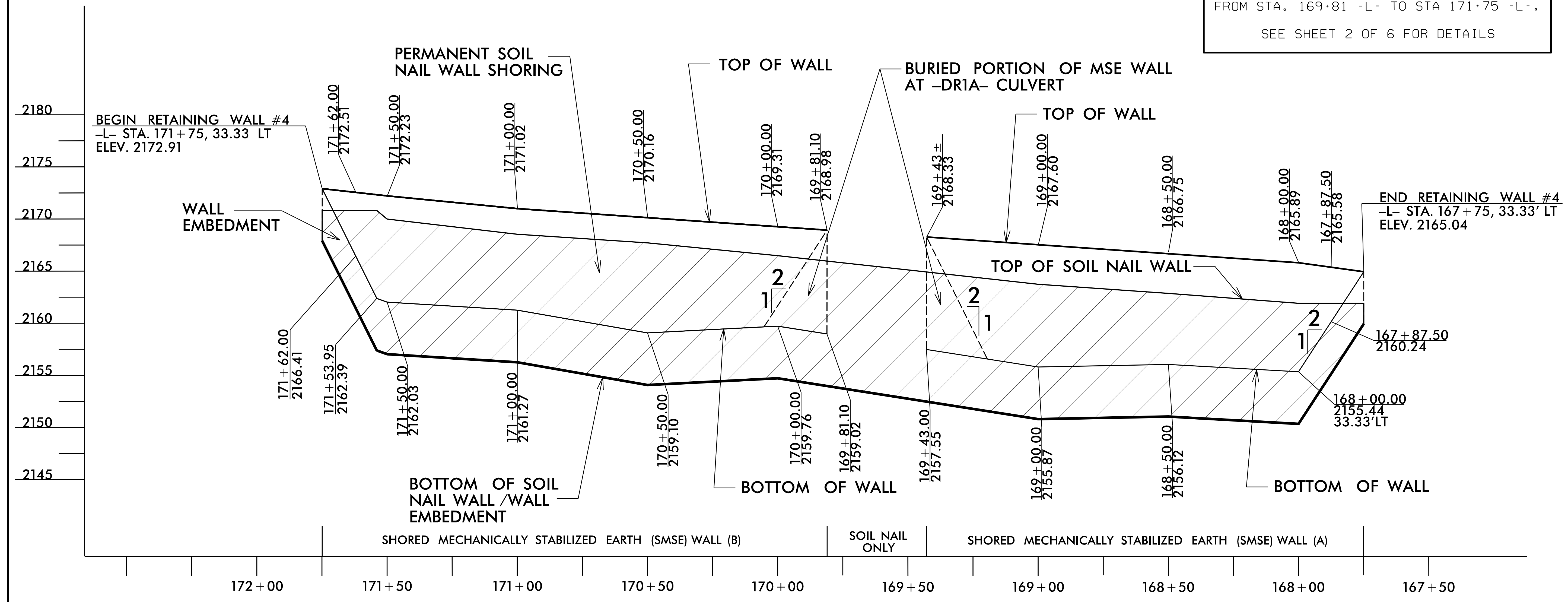
DOCUMENT NOT CONSIDERED FINAL UNLESS ALL SIGNATURES COMPLETED

NOTE:

THE SOIL NAIL WALL LIMITS ARE FROM STA. 167+75 -L- TO STA. 171+75 -L-.

THE SMSE WALL LIMITS ARE FROM STA. 167+75 -L- TO STA. 169+43 -L- AND FROM STA. 169+81 -L- TO STA 171+75 -L-.

SEE SHEET 2 OF 6 FOR DETAILS



ESTIMATED SMSE WALL #4 QUANTITIES

SHORED MSE RETAINING WALL #4 (A)	2,650	SQ. FT.
SHORED MSE RETAINING WALL #4 (B)	2,950	SQ. FT.
TOTAL SHORED MSE RETAINING WALL #4	5,600	SQ. FT.

ESTIMATED SOIL NAIL WALL QUANTITIES

RETAINING WALL #	SOIL NAIL RETAINING WALLS (SQUARE FEET)	SOIL NAIL VERIFICATION TESTS	SOIL NAIL PROOF TESTS
4	4,800*	3	15

* INCLUDES RETAINING WALL EMBEDMENT

Prepared in the Office of:

CG2 CAROLINAS GEOTECHNICAL GROUP

2400 CROWNPOINT EXECUTIVE DRIVE
SUITE 800
CHARLOTTE, NC 28227
(980) 339-8684

PROJECT NO.: A-0009CA

GRAHAM COUNTY

STATION: -L-167+75, 33' LT TO 171+75, 33' LT

SHEET 1 OF 5

SHORED MECHANICALLY STABILIZED EARTH (SMSE) RETAINING WALL #4

REVISIONS					
NO.	BY	DATE	NO.	BY	DATE
1			3		
2			4		

SHEET NO. W4-1

PREPARED BY: DMB DATE: 4/28/2022

REVIEWED BY: REK DATE: 4/28/2022