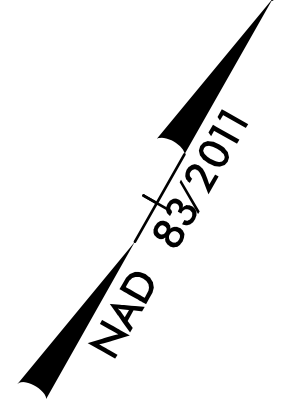


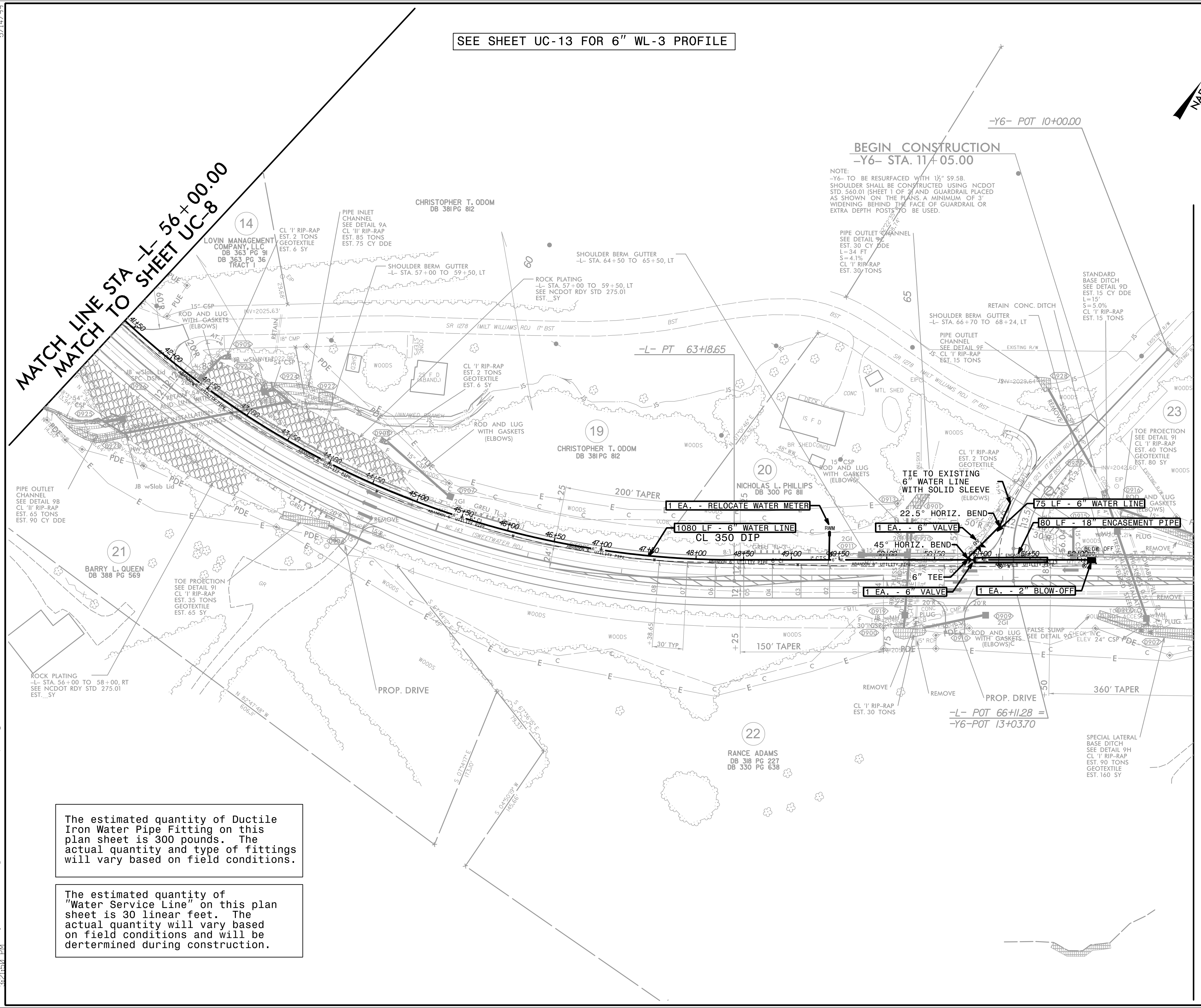
5/14/99

PROJECT REFERENCE NO.	SHEET NO.
A-0009CA	UC-9
DESIGNED BY: BCH	
DRAWN BY:	
CHECKED BY: JLT	
APPROVED BY:	
REVISID:	
NORTH CAROLINA DEPARTMENT OF TRANSPORTATION	
DIVISION 14	
PHONE: (828)586-2141	UTILITY CONSTRUCTION PLANS ONLY



SEE SHEET UC-13 FOR 6" WL-3 PROFILE

MATCH LINE STA L- 56+00.00  
MATCH TO SHEET UC-8



BEGIN CONSTRUCTION  
-Y6- STA. 11+05.00

NOTE:  
-Y6- TO BE RESURFACED WITH 1 1/2" S9.5B. SHOULDER SHALL BE CONSTRUCTED USING NCDOT STD. 560.01 (SHEET 1 OF 2) AND GUARDRAIL PLACED AS SHOWN ON THE PLANS. A MINIMUM OF 3' WIDENING BEHIND THE FACE OF GUARDRAIL OR EXTRA DEPTH POSTS TO BE USED.

UTILITY CONSTRUCTION  
DOCUMENT NOT CONSIDERED FINAL  
UNLESS ALL SIGNATURES COMPLETED

The estimated quantity of Ductile Iron Water Pipe Fitting on this plan sheet is 300 pounds. The actual quantity and type of fittings will vary based on field conditions.

The estimated quantity of "Water Service Line" on this plan sheet is 30 linear feet. The actual quantity will vary based on field conditions and will be determined during construction.

5/14/2022 (Project) UC\utl const Sht9)\_psh.dgn  
3:21:50 PM