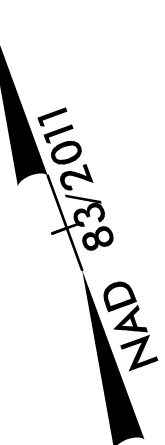


5/14/99

SEE SHEET UC-12 FOR 6" WL-3 PROFILE

PROJECT REFERENCE NO.	SHEET NO.
A-0009CA	UC-7
DESIGNED BY: BCH	
DRAWN BY:	
CHECKED BY: JLT	
APPROVED BY:	
REVISED:	
NORTH CAROLINA DEPARTMENT OF TRANSPORTATION	
DIVISION 14	
PHONE: (828) 586-2141	UTILITY CONSTRUCTION PLANS ONLY

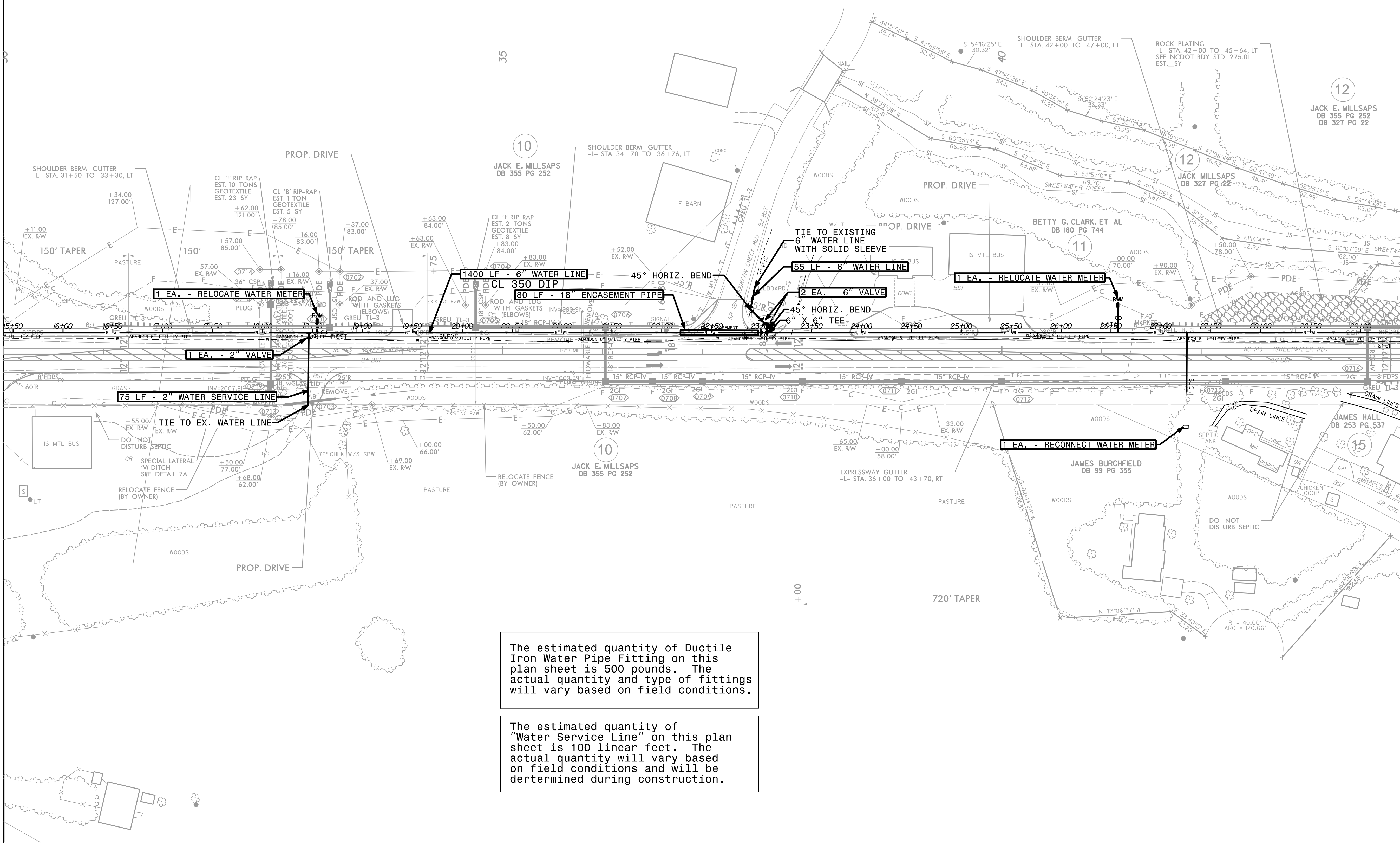


### UTILITY CONSTRUCTION

DOCUMENT NOT CONSIDERED FINAL UNLESS ALL SIGNATURES COMPLETED

MATCH LINE STA -L- 30 + 00.00  
MATCH TO SHEET UC-6

MATCH LINE STA -L- 44 + 00.00  
MATCH TO SHEET UC-8



The estimated quantity of Ductile Iron Water Pipe Fitting on this plan sheet is 500 pounds. The actual quantity and type of fittings will vary based on field conditions.

The estimated quantity of "Water Service Line" on this plan sheet is 100 linear feet. The actual quantity will vary based on field conditions and will be determined during construction.

7/1/2022 UC-A-0009CA-Proj\A-0009\_Ut\_r-dy\_sht7\_1 UC\ut1\_const\_Sht7\_1\_psh.dgn