


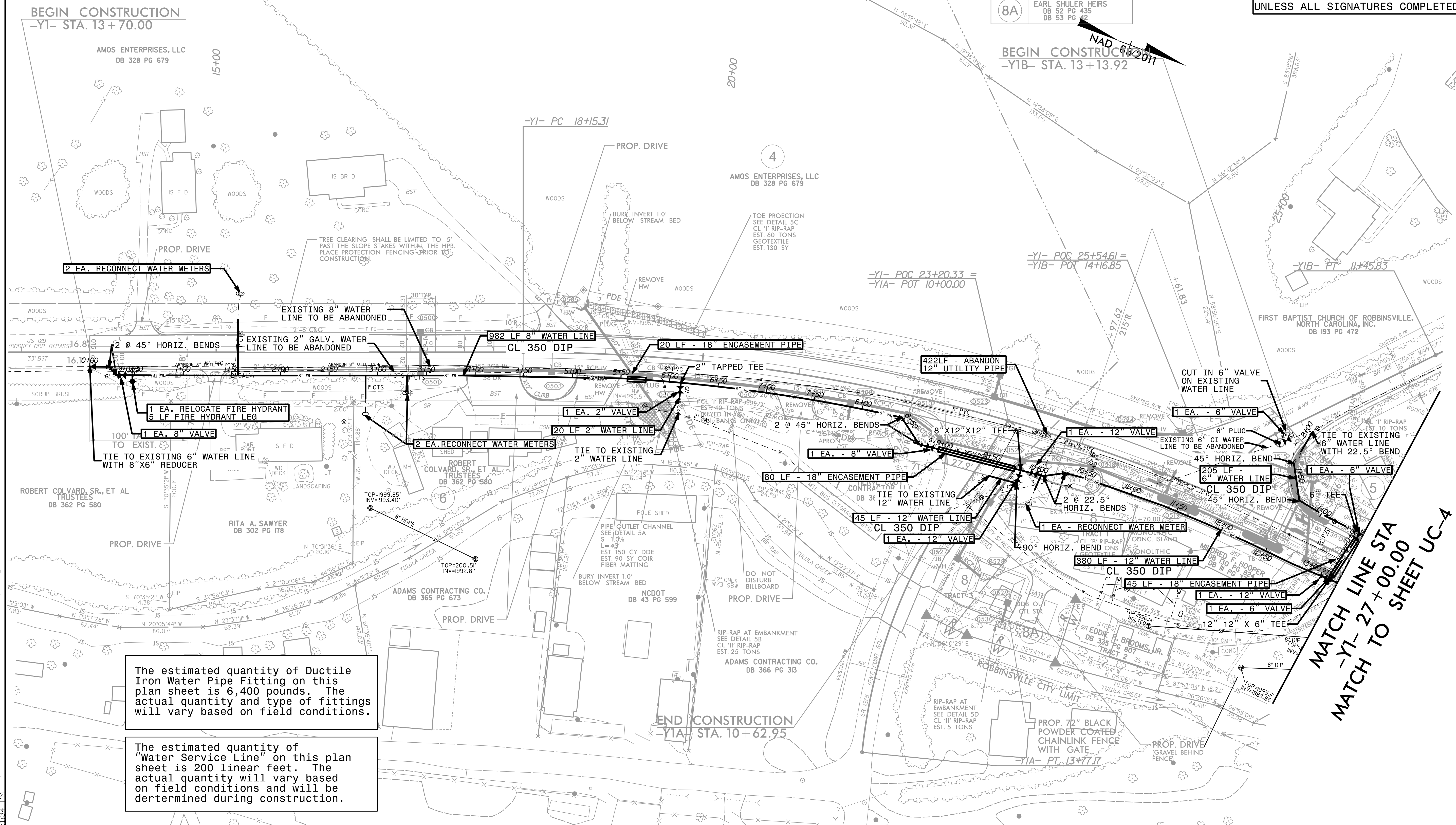
PROJECT REFERENCE NO.	SHEET NO.
A-0009CA	UC-5
DESIGNED BY: BCH	
DRAWN BY:	
CHECKED BY: JLT	
APPROVED BY:	
REVISED:	
NORTH CAROLINA DEPARTMENT OF TRANSPORTATION	
DIVISION 14	
PHONE: (828)586-2141	UTILITY CONSTRUCTION PLANS ONLY

UTILITY CONSTRUCTION

DOCUMENT NOT CONSIDERED FINAL UNLESS ALL SIGNATURES COMPLETED

SEE SHEET UC-10 FOR 12" WL-1 PROFILE
SEE SHEET UC-11 FOR 6" WL-2 PROFILE

8	EDDIE R. BROOMS, JR. DB 335 PG 807
8A	EARL SHULER HEIRS DB 52 PG 435 DB 53 PG 42



The estimated quantity of Ductile Iron Water Pipe Fitting on this plan sheet is 6,400 pounds. The actual quantity and type of fittings will vary based on field conditions.

The estimated quantity of "Water Service Line" on this plan sheet is 200 linear feet. The actual quantity will vary based on field conditions and will be determined during construction.

MATCH LINE STA -Y1- 27+00.00
MATCH TO SHEET UC-4

5/14/2022
3:21:34 PM
C:\Users\juc\OneDrive\Documents\Projects\14-0009\14-0009_14-UC\11.dwg
11.dwg