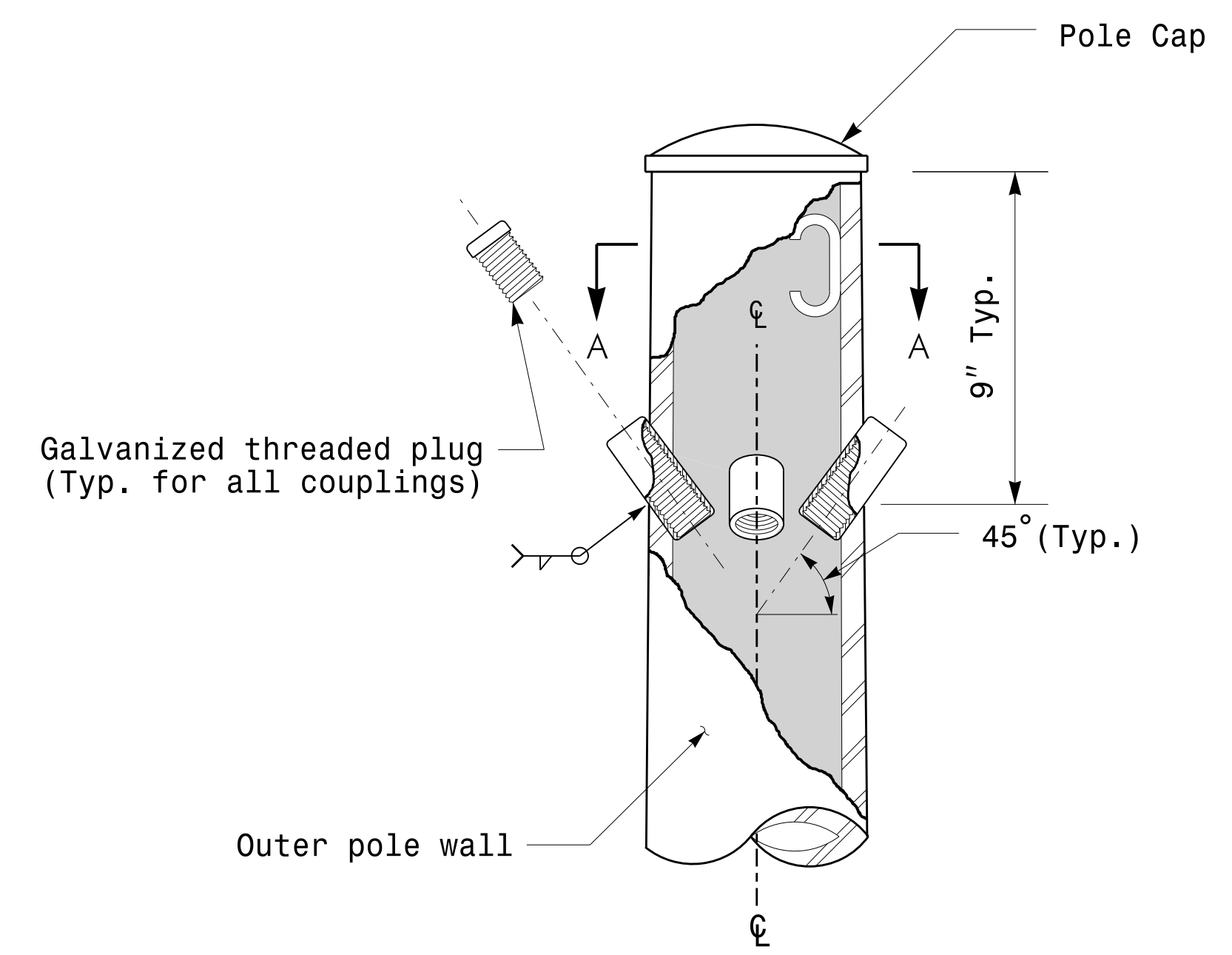
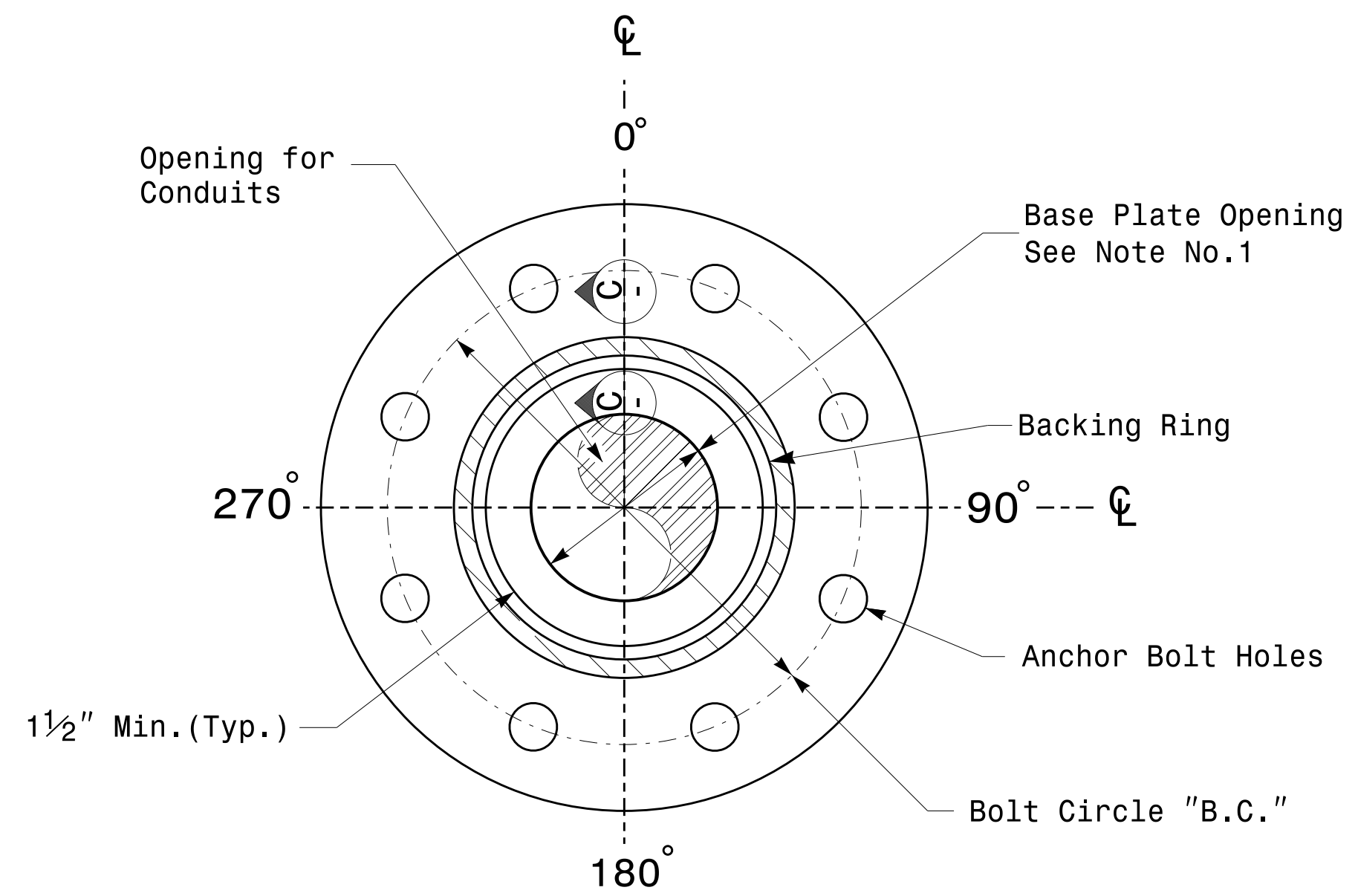


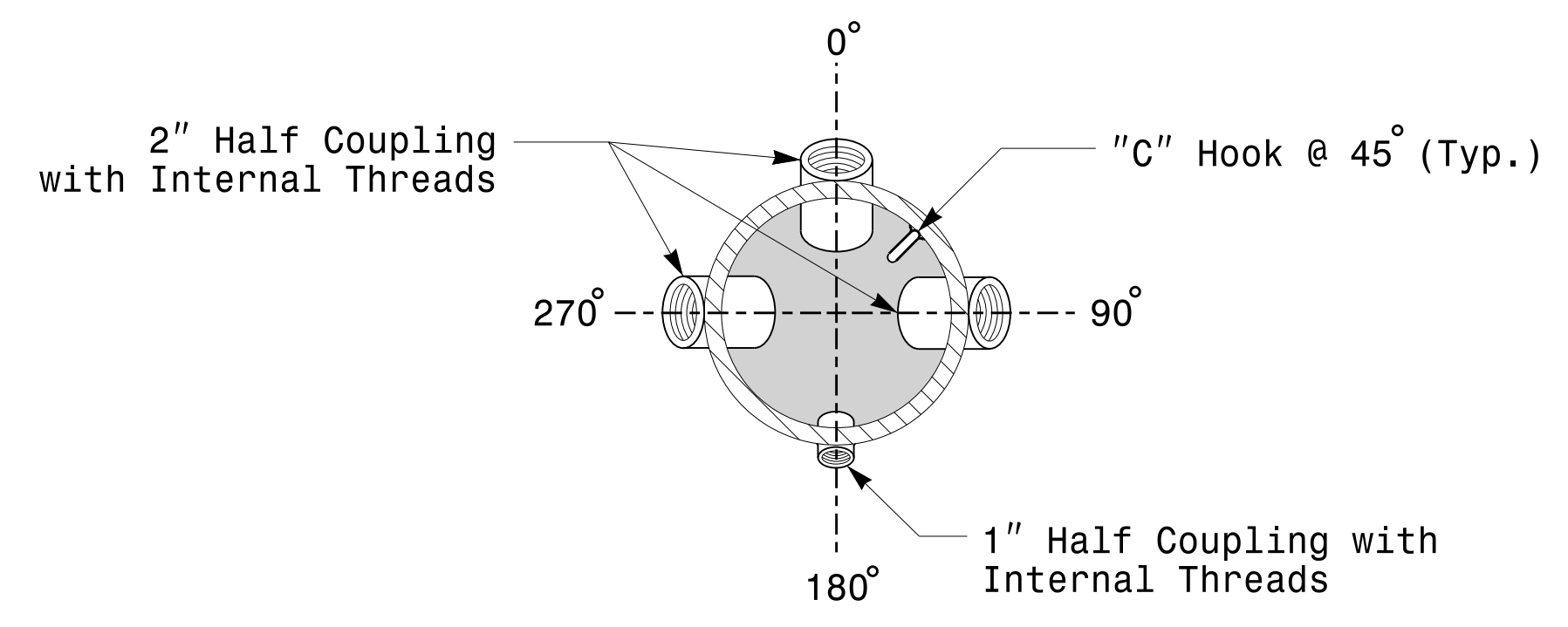
Note:
 1. Opening in pole base plate shall be equal to pole base inside diameter minus 3 1/2" but shall not be less than 8 1/2".



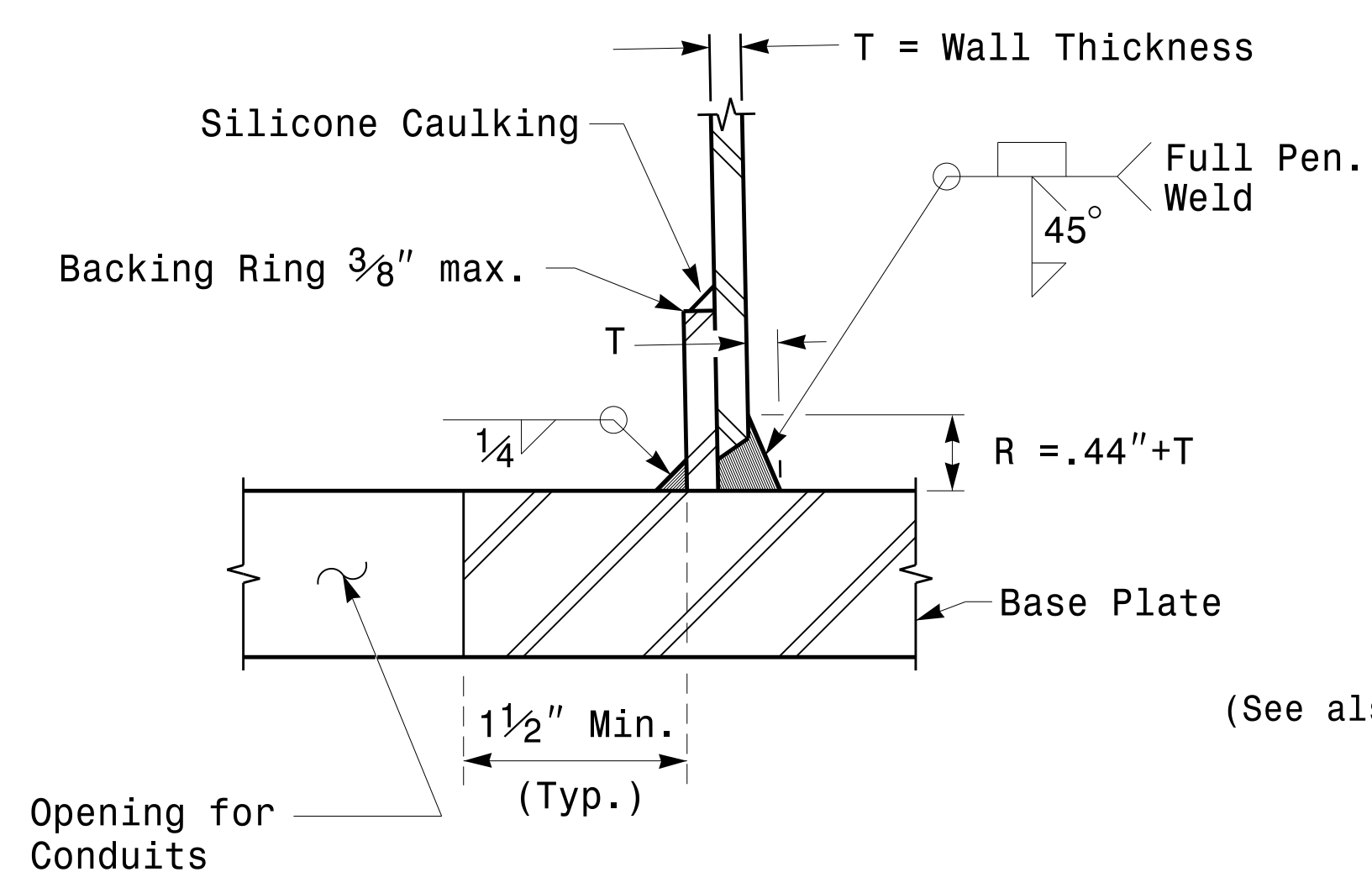
Cable Entrances at Top of Pole



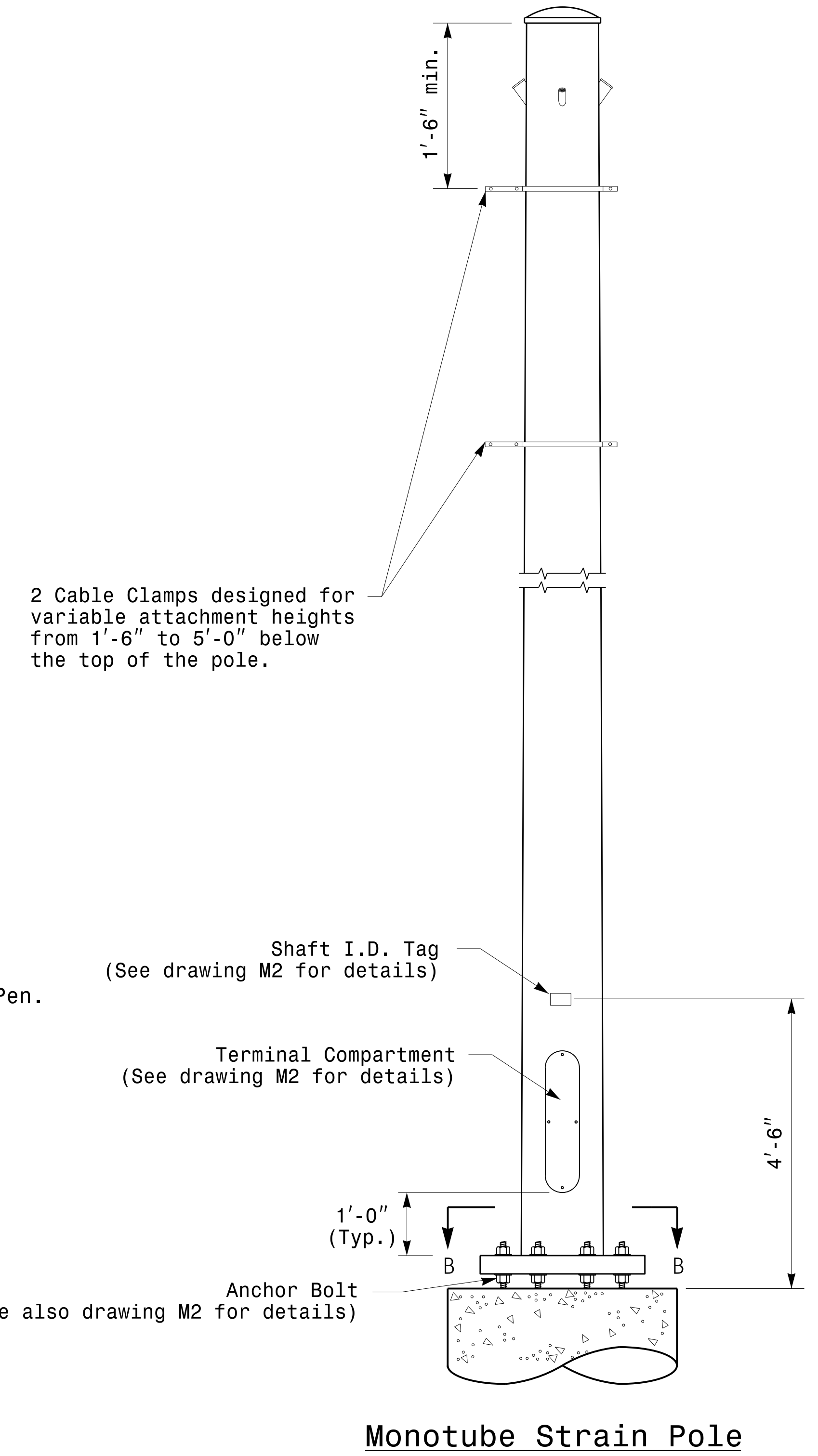
Section B-B
Pole Base Plate Details
(8 and 12 Bolt Pattern)



Section A-A
Radial Orientation for Factory Installed
Accessories at Top of Pole



Section C-C
(Pole Attachment to Base Plate)
Full-Penetration
Groove Weld Detail



Monotube Strain Pole

11-0CT-2017-08:25
 1365604115 StrainPoles.dgn
 Design Section Eastern Region
 11-0CT-2017-08:25
 1365604115 StrainPoles.dgn
 Design Section Eastern Region
 11-0CT-2017-08:25
 1365604115 StrainPoles.dgn
 Design Section Eastern Region

<p>750 N. Greenleaf Pkwy, Garner, NC 27529</p>	Typical Fabrication Details For Strain Poles		SEAL D.C. SARKAR ENGINEER 44887816/FK/PURE
	PLAN DATE: OCTOBER 2017 DESIGNED BY: K.C. DURIGON	PREPARED BY: N. BITTING REVIEWED BY: D.C. SARKAR	
SCALE: 0 NA NONE	DATE: 10/11/2017		DATE:

Fabrication Details – Strain Poles