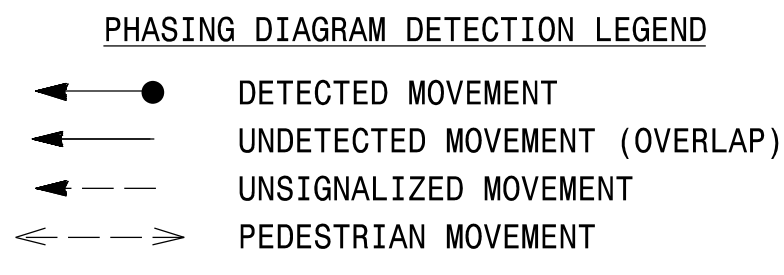


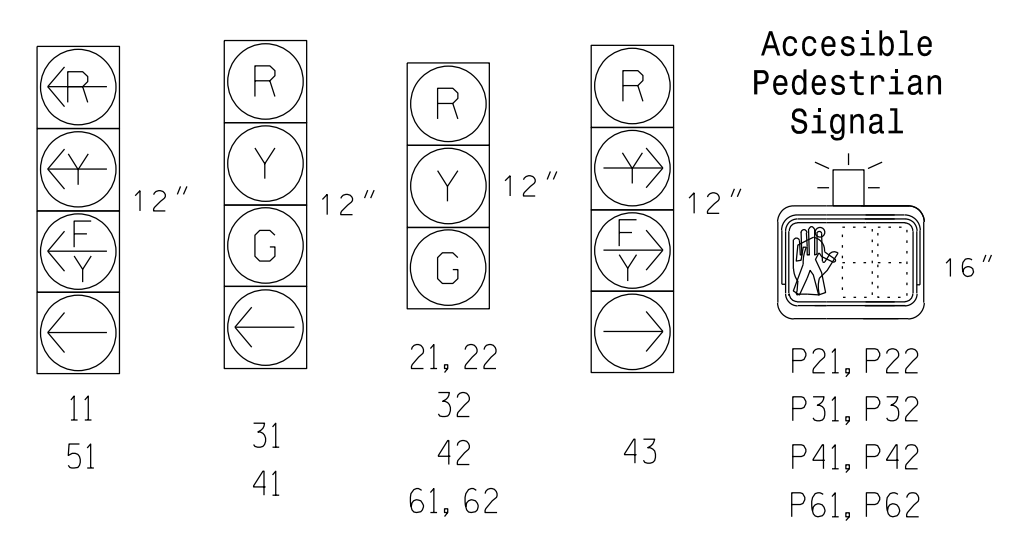
TABLE OF OPERATION

SIGNAL FACE	PHASE					
	01+5	01+6	02+5	02+6	03	04
11	←	←	←	←	←	←
21, 22	R	R	G	G	R	Y
31	R	R	R	R	G	R
32	R	R	R	R	G	R
41	R	R	R	R	G	R
42	R	R	R	R	G	R
43	←	←	R	R	←	R
51	←	←	←	←	←	←
61, 62	R	G	R	G	R	Y
P21,P22	DW	DW	W	W	DW	DRK
P31,P32	DW	DW	DW	DW	W	DRK
P41,P42	DW	DW	DW	DW	W	DRK
P61,P62	DW	W	DW	DW	DRK	



SIGNAL FACE I.D.

All Heads L.E.D.



ASC/3 DETECTOR INSTALLATION CHART

LOOP	SIZE (FT)	DISTANCE FROM STOPBAR (FT)	TURNS	NEW LOOP	PROGRAMMING							
					PHASE	CALLING	EXTEND TIME	DELAY TIME	USE ADDED INITIAL	TYPE	SYSTEM LOOP	NEW CARD
1A	*	0	*	Y	1	Yes	-	15	-	N	-	*
1B	*	0	*	Y	6	Yes	-	3	-	N	-	*
2A	*	70	*	Y	2	Yes	-	-	-	N	-	*
3A	*	0	*	Y	3	Yes	-	10	-	N	-	*
4A	*	0	*	Y	4	Yes	-	-	-	N	-	*
5A	*	0	*	Y	5	Yes	-	15	-	N	-	*
6A	*	70	*	Y	2	Yes	-	-	-	N	-	*

* Multizone Microwave Detection Zones

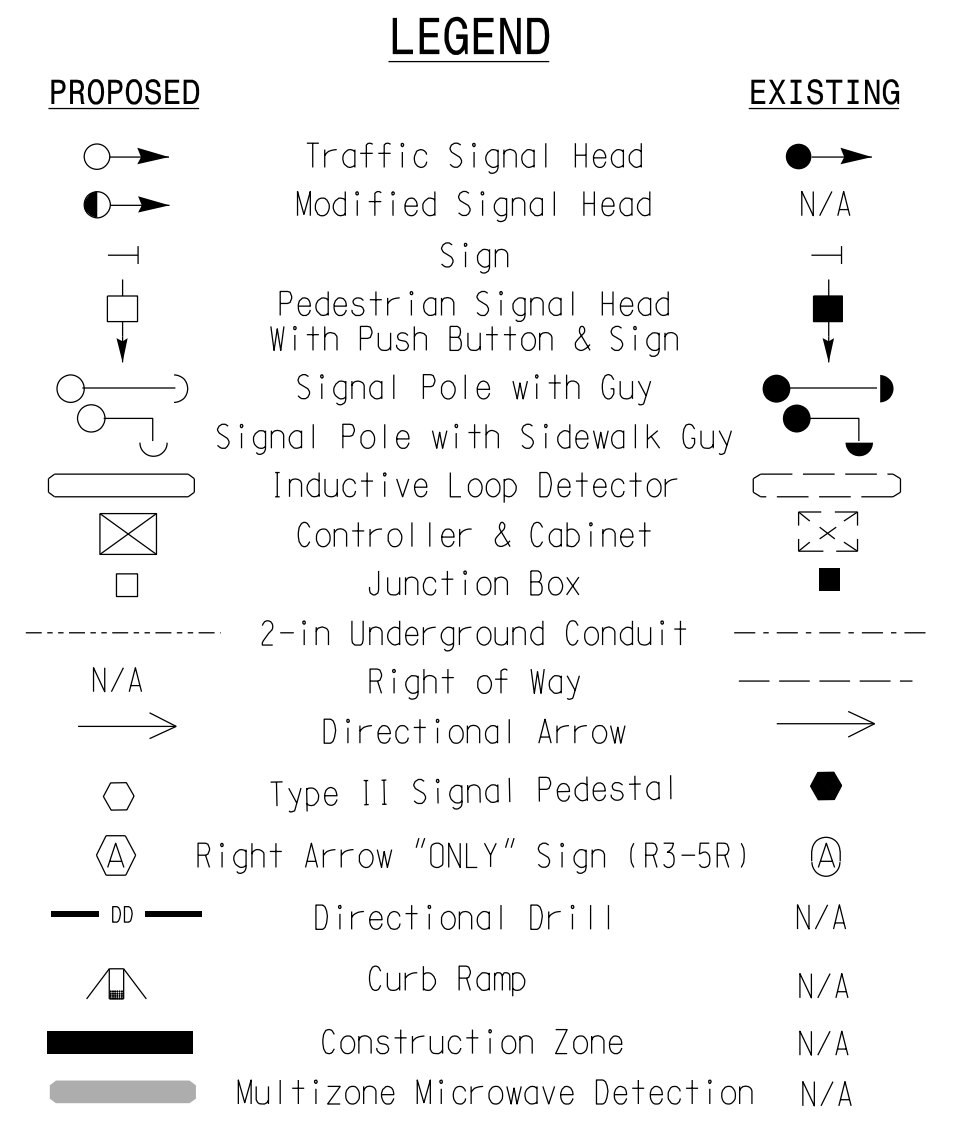
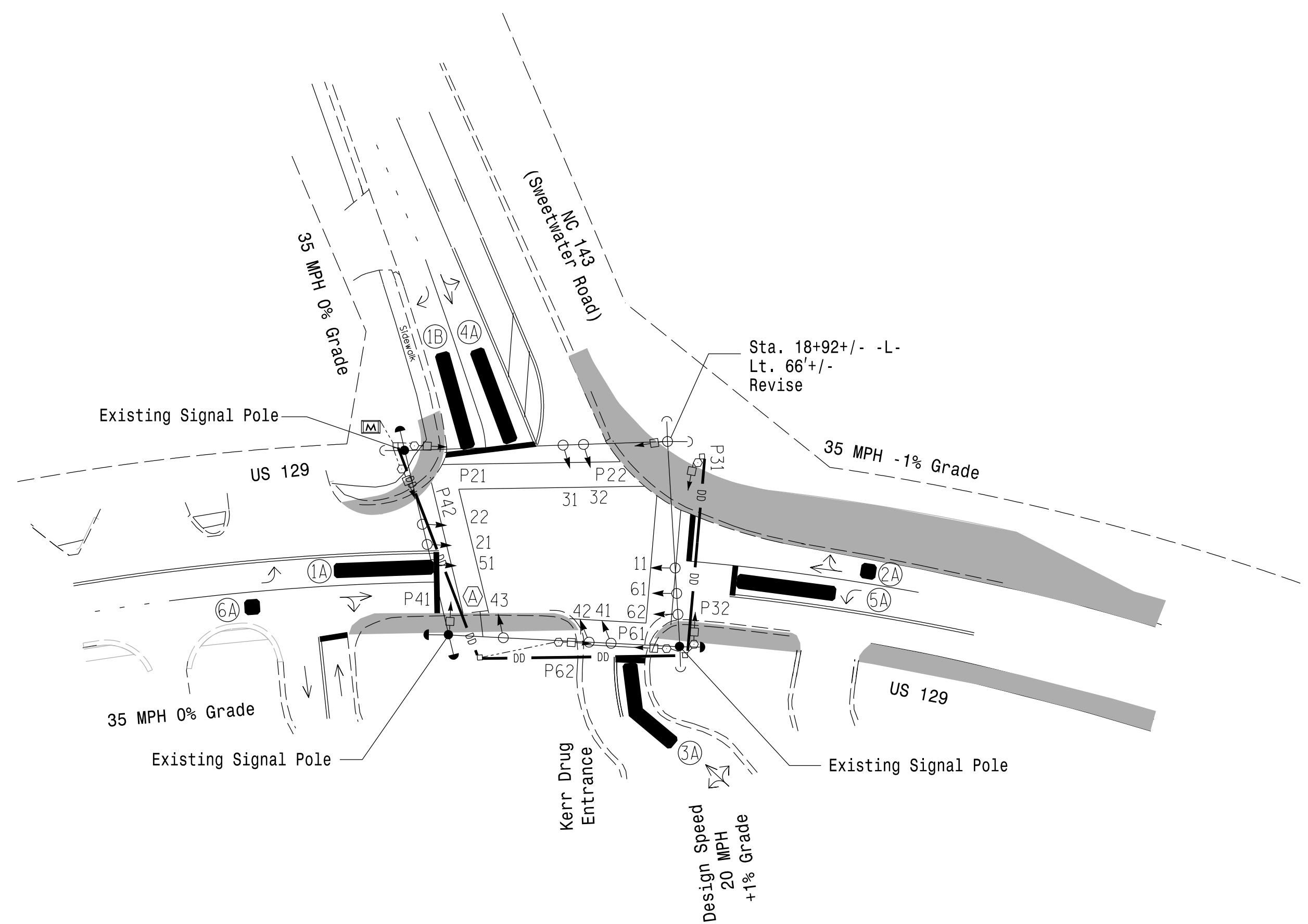
6 Phase Fully Actuated Isolated

NOTES

- Refer to "Roadway Standard Drawings NCDOT" dated January 2018 and "Standard Specifications for Roads and Structures" dated January 2018.
- Do not program signal for late night flashing operation unless otherwise directed by the Engineer.
- Phase 1 and/or phase 5 may be lagged.
- Set all detector units to presence mode.
- Omit "WALK" and flashing "DON'T WALK" with no pedestrian calls.
- Program pedestrian heads to countdown the flashing 'Don't Walk' time only.
- This intersection features a multizone microwave detection system. Install detectors according to manufacturer's specifications to ensure optimum detection zone coverage.
- Locate new cabinet so as not to obstruct sight distance of vehicles turning right on red.
- This intersection features accessible pedestrian signals utilizing percussive tone walk indications.

ACCESSIBLE PEDESTRIAN SIGNAL OPERATION

SIGNAL FACE	VOICE TONES	INTERVAL	SPEECH MESSAGE
P21	- X	Walk	(Percussive Tone)
	X -	Flashing Don't Walk/Don't Walk	Wait. Wait to cross Sweetwater.
P22	- X	Walk	(Percussive Tone)
	X -	Flashing Don't Walk/Don't Walk	Wait. Wait to cross Sweetwater.
P31	- X	Walk	(Percussive Tone)
	X -	Flashing Don't Walk/Don't Walk	Wait. Wait to cross US 129.
P32	- X	Walk	(Percussive Tone)
	X -	Flashing Don't Walk/Don't Walk	Wait. Wait to cross US 129.
P41	- X	Walk	(Percussive Tone)
	X -	Flashing Don't Walk/Don't Walk	Wait. Wait to cross US 129.
P42	- X	Walk	(Percussive Tone)
	X -	Flashing Don't Walk/Don't Walk	Wait. Wait to cross US 129.
P61	- X	Walk	(Percussive Tone)
	X -	Flashing Don't Walk/Don't Walk	Wait. Wait to cross Kerr Drug.
P62	- X	Walk	(Percussive Tone)
	X -	Flashing Don't Walk/Don't Walk	Wait. Wait to cross Kerr Drug.

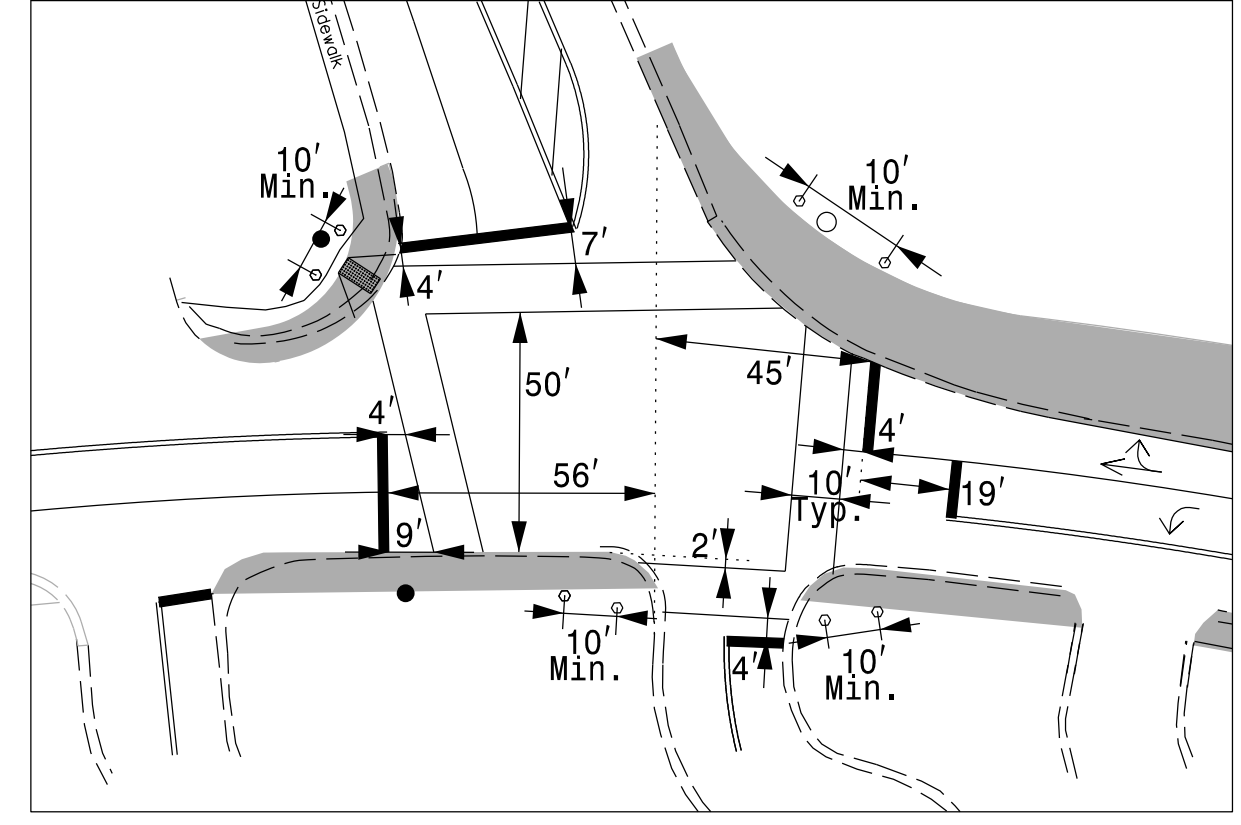


ASC/3 TIMING CHART

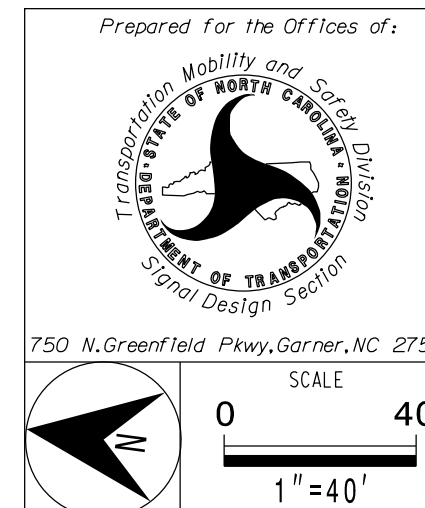
FEATURE	PHASE					
	1	2	3	4	5	6
Min Green *	7	10	7	7	7	10
Walk *	-	9	12	9	-	11
Ped Clear	-	24	15	16	-	8
Veh. Extension *	2.0	3.0	2.0	2.0	2.0	3.0
Max I *	15	45	15	25	15	45
Yellow	3.0	3.9	3.8	3.0	3.0	3.9
Red Clear	2.6	1.8	2.1	3.1	1.9	1.8
Red Revert	2.0	2.0	2.0	2.0	2.0	2.0
Actuations B4 Add *	-	-	-	-	-	-
Seconds /Actuation *	-	-	-	-	-	-
Max Initial *	-	-	-	-	-	-
Time Before Reduction *	-	-	-	-	-	-
Time To Reduce *	-	-	-	-	-	-
Minimum Gap	-	-	-	-	-	-
Locking Detector	-	-	-	-	-	-
Recall Position	-	VEH RECALL	-	-	-	VEH RECALL
Dual Entry	-	-	-	-	-	-
Simultaneous Gap	X	X	X	X	X	X

* These values may be field adjusted. Do not adjust Min Green and Extension times for phases 2 and 6 lower than what is shown. Min Green for all other phases should not be lower than 4 seconds.

STOP LINE & CROSSWALK LOCATIONS



Signal Upgrade-Temporary Design 1 (TMP Phase I)



US 129 at NC 143 (Sweetwater Road) / Kerr Drug Entrance	
Division 14	Graham County
Robbinsville	
PLAN DATE: May 2022	REVIEWED BY: M. L. Stygles
PREPARED BY: J. Ma	REVIEWED BY:
REVISIONS	INIT. DATE

