

PHASING DIAGRAM

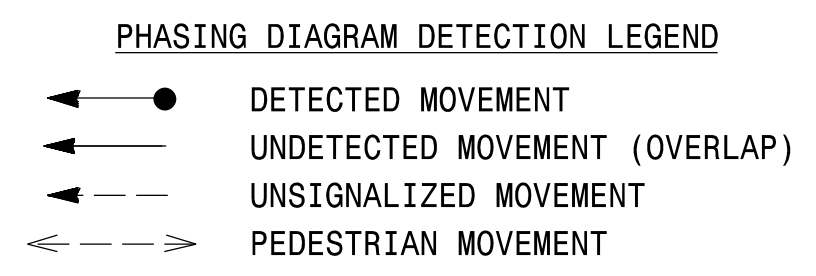
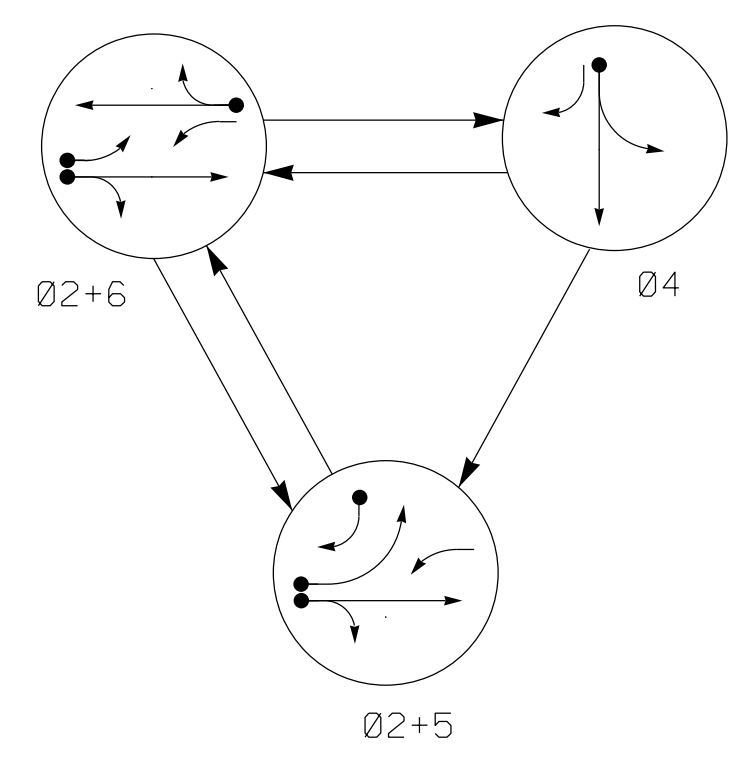
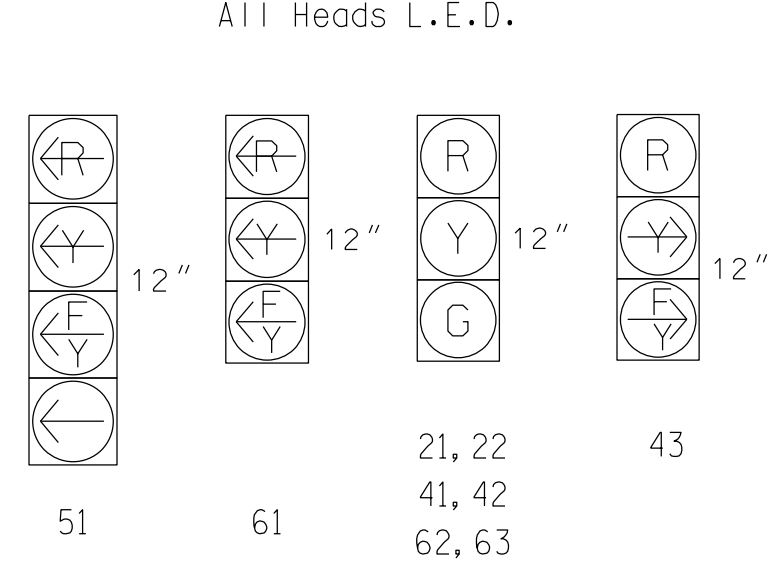


TABLE OF OPERATION

SIGNAL FACE	PHASE			
	02+5	02+6	04	FLASH
21,22	G	G	R	Y
41, 42	R	R	G	R
43	E	R	E	R
51	←	←	←	←
61	E	E	R	←
62,63	R	G	R	Y

SIGNAL FACE I.D.



ASC/3 DETECTOR INSTALLATION CHART

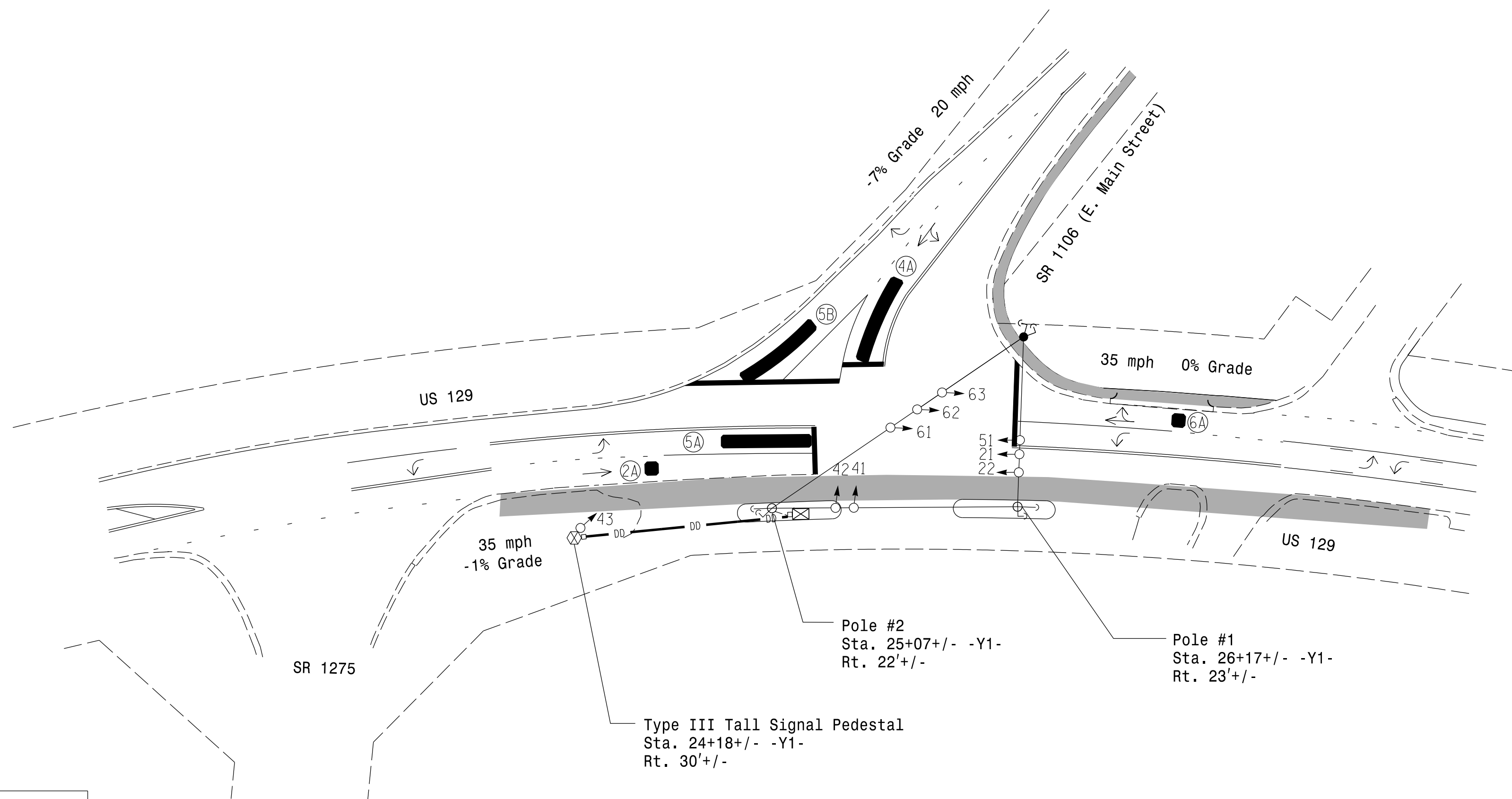
LOOP	SIZE (FT)	DISTANCE FROM STOPBAR (FT)	TURNS	NEW LOOP	PROGRAMMING							
					PHASE	CALLING	EXTEND TIME	DELAY TIME	USE ADDED INITIAL	TYPE	SYSTEM LOOP	NEW CARD
2A	*	70	*	X	2	Yes	-	-	-	N	-	*
4A	*	0	*	X	4	Yes	-	3	-	N	-	*
5A	*	0	*	X	5	Yes	-	15	-	N	-	*
5B	*	0	*	X	5	Yes	-	15	-	N	-	*
6A	*	70	*	X	6	Yes	-	-	-	N	-	*

* Multizone Microwave Detection Zones

3 Phase Fully Actuated Isolated

NOTES

- Refer to "Roadway Standard Drawings NCDOT" dated January 2018 and "Standard Specifications for Roads and Structures" dated January 2018.
- Do not program signal for late night flashing operation unless otherwise directed by the Engineer.
- Phase 5 may be lagged.
- Set all detector units to presence mode.
- This intersection features a multizone microwave detection system. Install detectors according to manufacturer's specifications to ensure optimum detection zone coverage.
- Locate new cabinet so as not to obstruct sight distance of vehicles turning right on red.
- Pavement markings are existing.



ASC/3 TIMING CHART

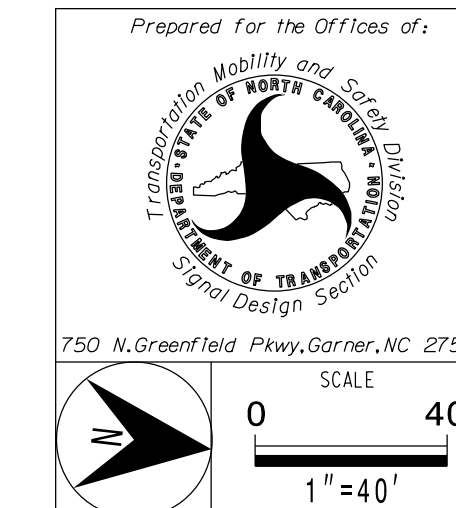
FEATURE	PHASE			
	2	4	5	6
Min Green *	10	7	7	10
Walk *	-	-	-	-
Ped Clear	-	-	-	-
Veh. Extension *	3.0	2.0	2.0	3.0
Max 1 *	40	20	15	40
Yellow	3.9	3.2	3.0	3.9
Red Clear	3.0	2.1	1.8	3.0
Red Revert	2.0	2.0	2.0	2.0
Actuations B4 Add *	-	-	-	-
Seconds /Actuation *	-	-	-	-
Max Initial *	-	-	-	-
Time Before Reduction *	-	-	-	-
Time To Reduce *	-	-	-	-
Minimum Gap	-	-	-	-
Locking Detector	-	-	-	-
Recall Position	VEH RECALL	-	-	VEH RECALL
Dual Entry	-	-	-	-
Simultaneous Gap	X	X	X	X

* These values may be field adjusted. Do not adjust Min Green and Extension times for phases 2 and 6 lower than what is shown. Min Green for all other phases should not be lower than 4 seconds.

LEGEND

PROPOSED	EXISTING
○ → Traffic Signal Head	● → N/A
○ → Modified Signal Head	○ → N/A
○ → Pedestrian Signal Head With Push Button & Sign	○ → N/A
○ → Signal Pole with Guy	○ → N/A
○ → Signal Pole with Sidewalk Guy	○ → N/A
□ → Inductive Loop Detector	□ → N/A
□ → Controller & Cabinet	□ → N/A
□ → Junction Box	□ → N/A
--- 2-in Underground Conduit	--- N/A
N/A Right of Way	N/A
→ Directional Arrow	→ N/A
--- Directional Drill	N/A
△ Curb Ramp	N/A
⊗ Type III Signal Pedestal	⊗ N/A
Construction Zone	N/A
█ Multizone Microwave Detection	N/A

Signal Upgrade-Temporary Design 1



US 129 at SR 1106 (E. Main Street)

Division 14	Graham County	Robbinsville
PLAN DATE: May 2022	REVIEWED BY: M. L. Stygles	
PREPARED BY: J. Ma	REVIEWED BY:	
REVISIONS	INIT.	DATE

DOCUMENT NOT CONSIDERED FINAL UNLESS ALL SIGNATURES COMPLETED

SEAL

SEAL

SEAL

DATE: 5/10/2022

SIG. INVENTORY NO. 14-0751T1