
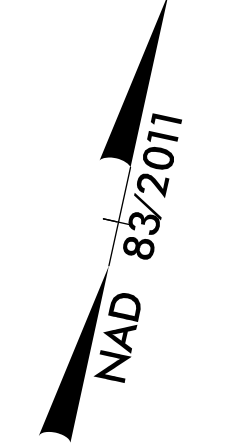
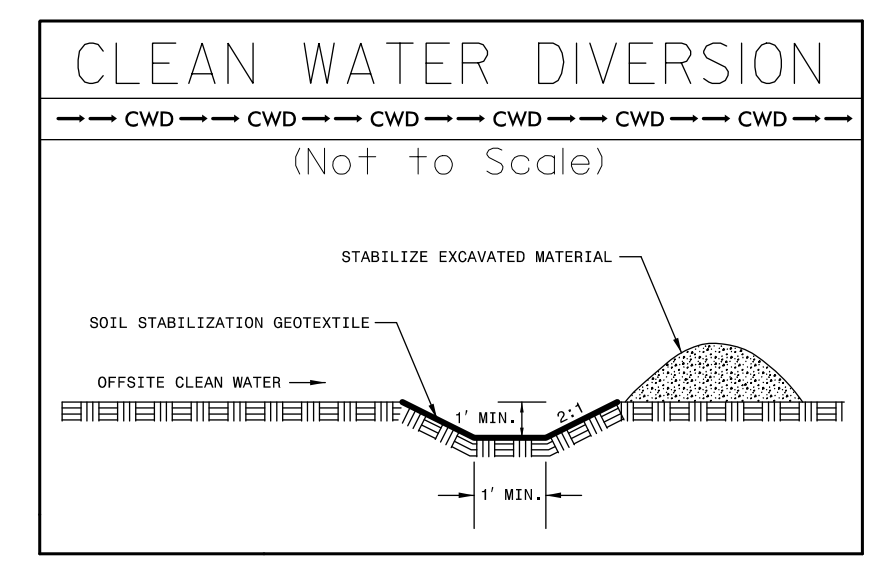
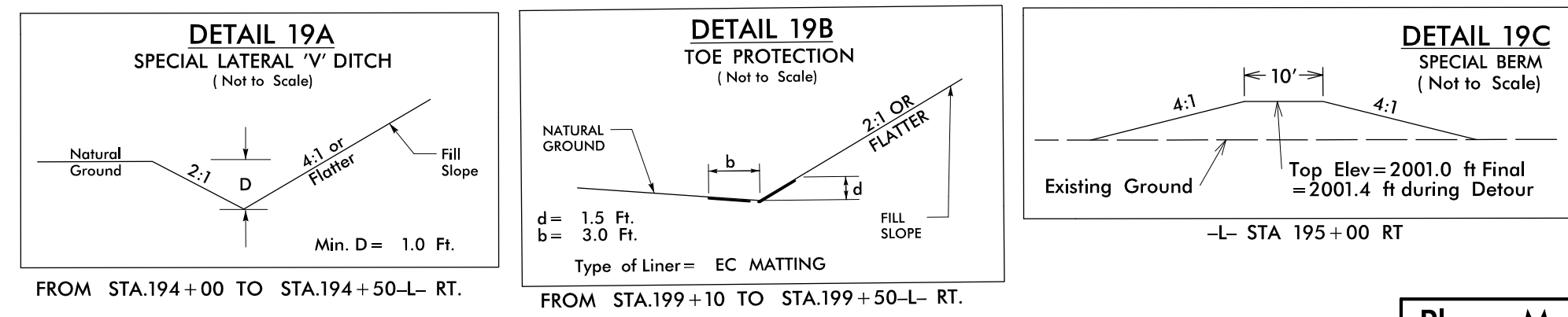
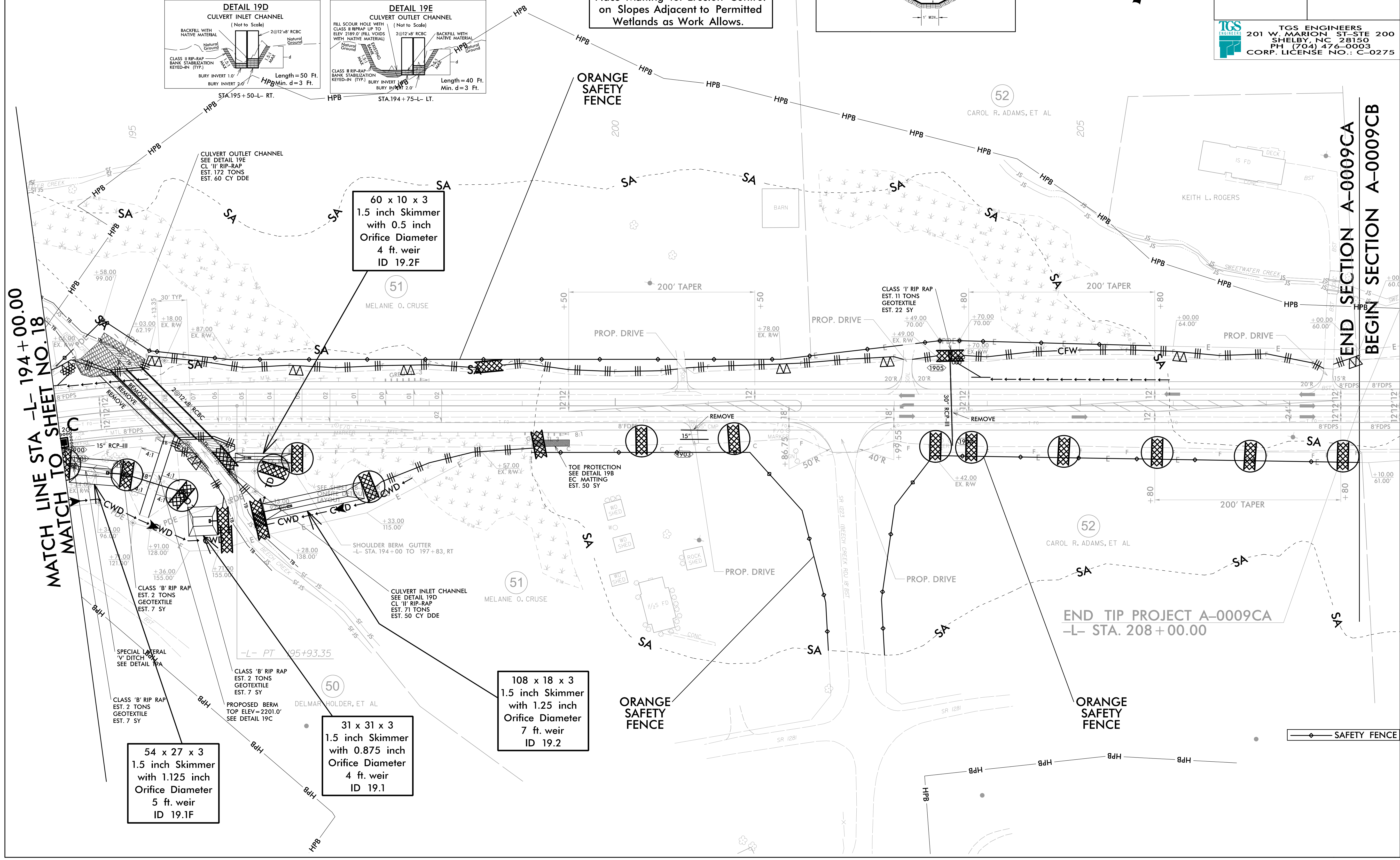


| | |
|---|-----------------------------|
| PROJECT REFERENCE NO. A-0009CA | SHEET NO. EC-38/CONST.19 |
| RW SHEET NO. | |
| ROADWAY DESIGN ENGINEER | HYDRAULICS ENGINEER |
|  TGS ENGINEERS 201 W. MARION ST. STE 200 SHELBY, NC 28150 PH (704) 476-0003 CORP. LICENSE NO.: C-0275 | |



Place Matting for Erosion Control on Slopes Adjacent to Permitted Wetlands as Work Allows.



MATCH LINE STA -L- 194+00.00
MATCH TO SHEET NO. 18

END SECTION A-0009CA
BEGIN SECTION A-0009CB

END TIP PROJECT A-0009CA
-L- STA. 208+00.00

54 x 27 x 3
1.5 inch Skimmer
with 1.125 inch
Orifice Diameter
5 ft. weir
ID 19.1F

31 x 31 x 3
1.5 inch Skimmer
with 0.875 inch
Orifice Diameter
4 ft. weir
ID 19.1

108 x 18 x 3
1.5 inch Skimmer
with 1.25 inch
Orifice Diameter
7 ft. weir
ID 19.2

60 x 10 x 3
1.5 inch Skimmer
with 0.5 inch
Orifice Diameter
4 ft. weir
ID 19.2F

