
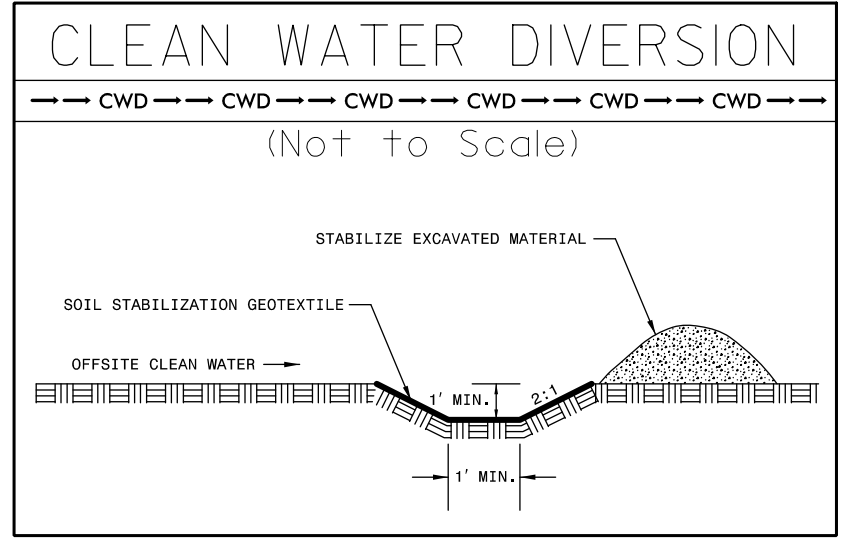
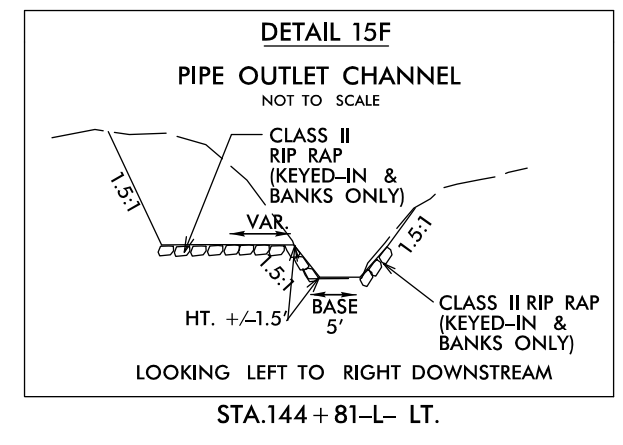
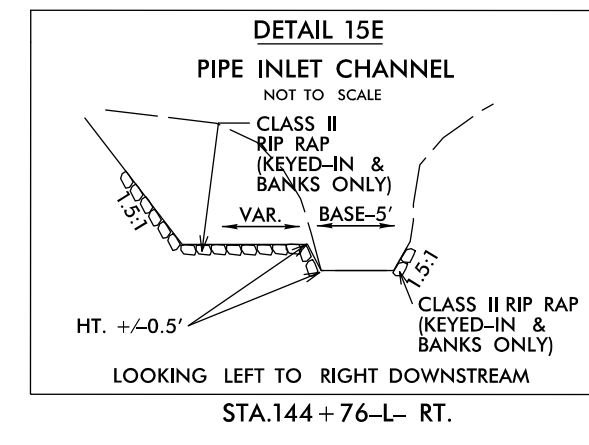
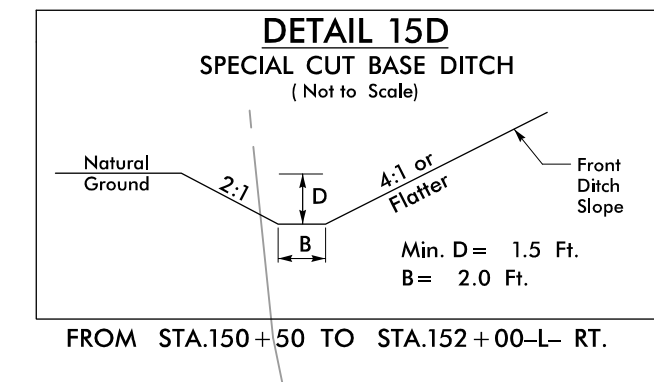
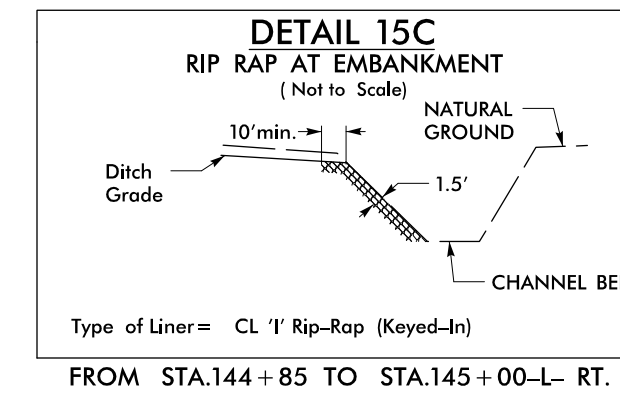
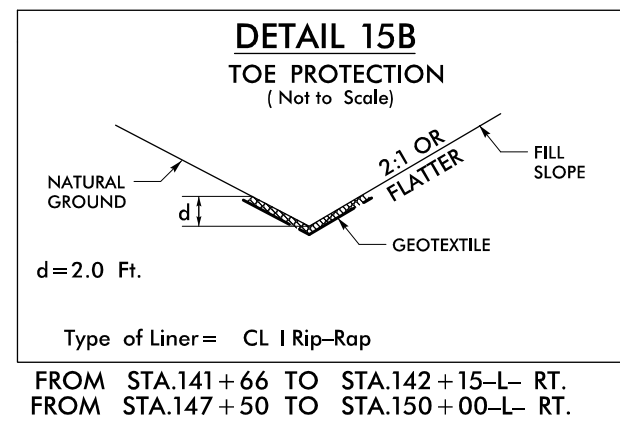
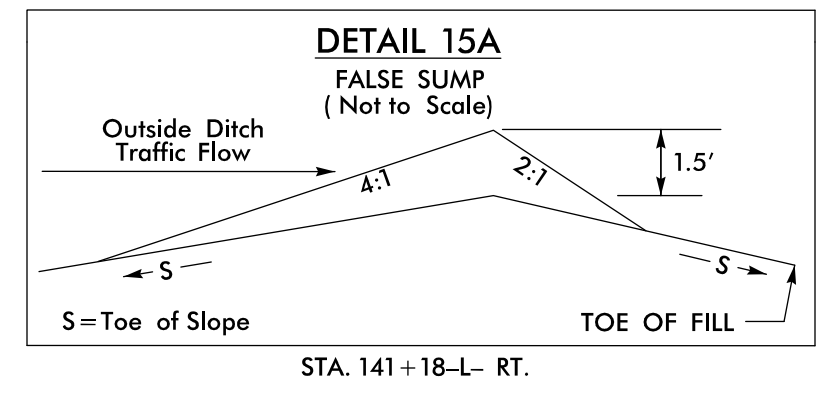


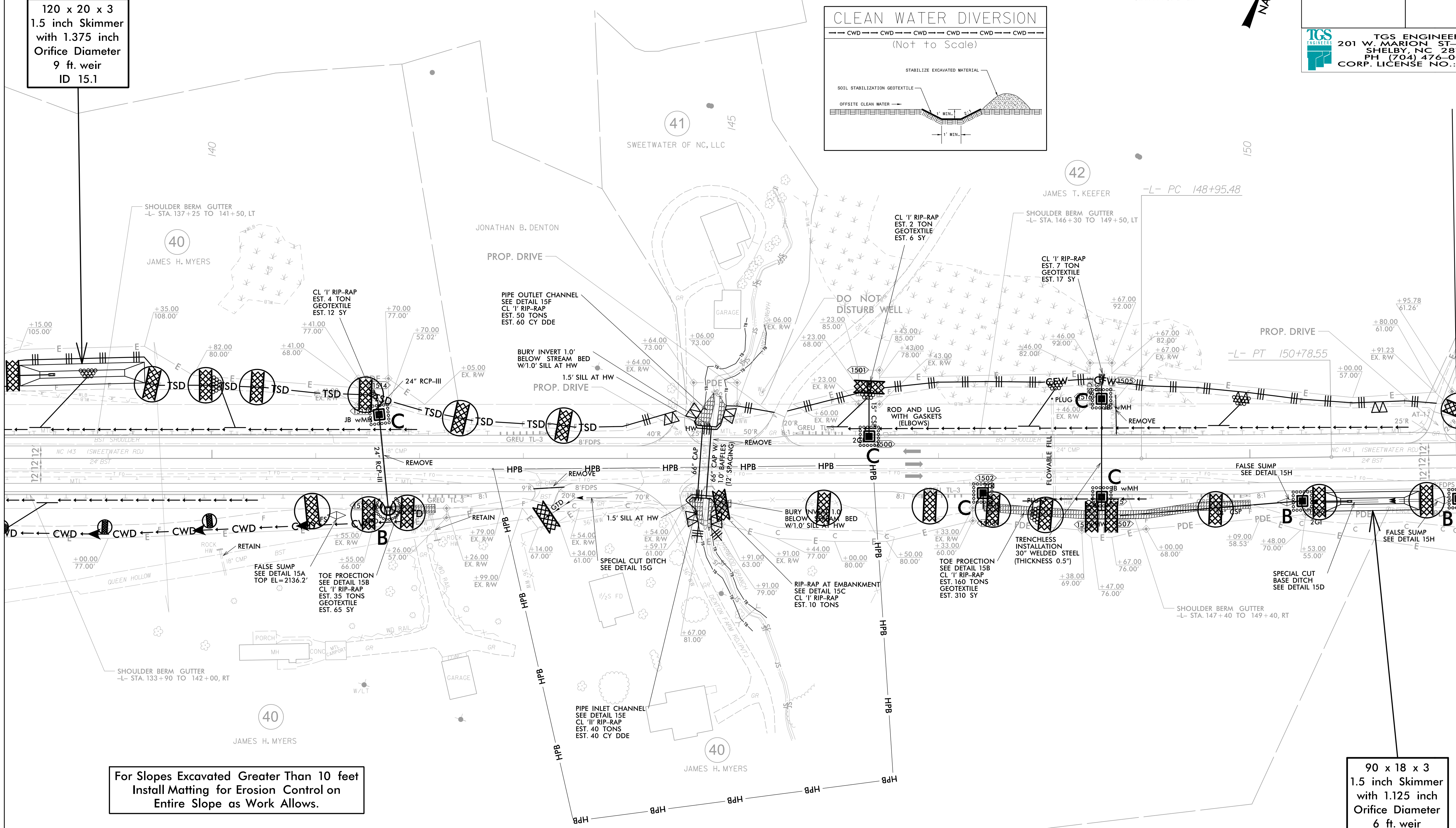
PROJECT REFERENCE NO.	SHEET NO.
A-0009CA	EC-34/CONST.15
RW SHEET NO.	
ROADWAY DESIGN ENGINEER	HYDRAULICS ENGINEER
 <b>TGS ENGINEERS</b> 201 W. MARION ST-STE 200 SHELBY, NC 28150 PH (704) 476-0003 CORP. LICENSE NO.: C-0275	

-L- CURVE DATA  
 PI Sta 149+87.02  
 $\Delta = 0^{\circ} 52' 26.7''$  (LT)  
 $D = 0^{\circ} 28' 38.9''$   
 $L = 183.07'$   
 $T = 91.54'$   
 $R = 12,000.00'$   
 $SE = NC$   
 $DS = 60$  MPH



MATCH LINE STA -L- 138+00.00  
MATCH TO SHEET NO. 14

MATCH LINE STA -L- 152+00.00  
MATCH TO SHEET NO. 16



120 x 20 x 3  
1.5 inch Skimmer  
with 1.375 inch  
Orifice Diameter  
9 ft. weir  
ID 15.1

For Slopes Excavated Greater Than 10 feet  
Install Matting for Erosion Control on  
Entire Slope as Work Allows.

Place Matting for Erosion Control  
on Slopes Adjacent to Permitted  
Wetlands as Work Allows.

90 x 18 x 3  
1.5 inch Skimmer  
with 1.125 inch  
Orifice Diameter  
6 ft. weir  
ID 15.2

