
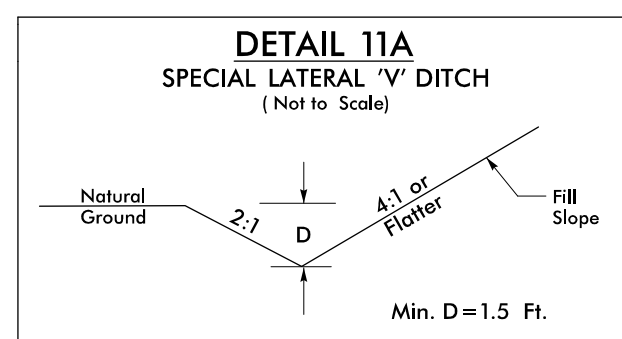
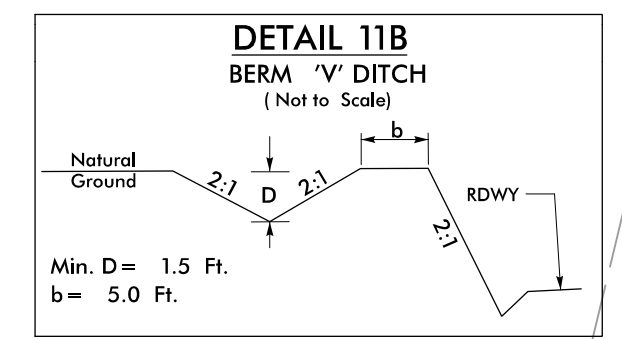


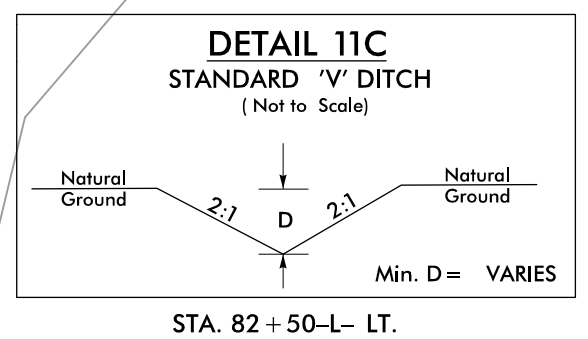
PROJECT REFERENCE NO. A-0009CA	SHEET NO. EC-30/CONST.II
RW SHEET NO.	
ROADWAY DESIGN ENGINEER	HYDRAULICS ENGINEER
 TGS ENGINEERS 201 W. MARION ST-STE 200 SHELBY, NC 28150 PH (704) 476-0003 CORP. LICENSE NO.: C-0275	



FROM STA.87+00 TO STA.87+50-L- LT.
FROM STA.88+62 TO STA.89+50-L- LT.



FROM STA.91+95 TO STA.92+50-L- LT.
FROM STA.93+85 TO STA.96+00-L- LT.



STA. 82 + 50-L- LT.

For Slopes Excavated Greater Than 10 feet
Install Matting for Erosion Control on
Entire Slope as Work Allows.

27
LOVIN MANAGEMENT COMPANY, LLC

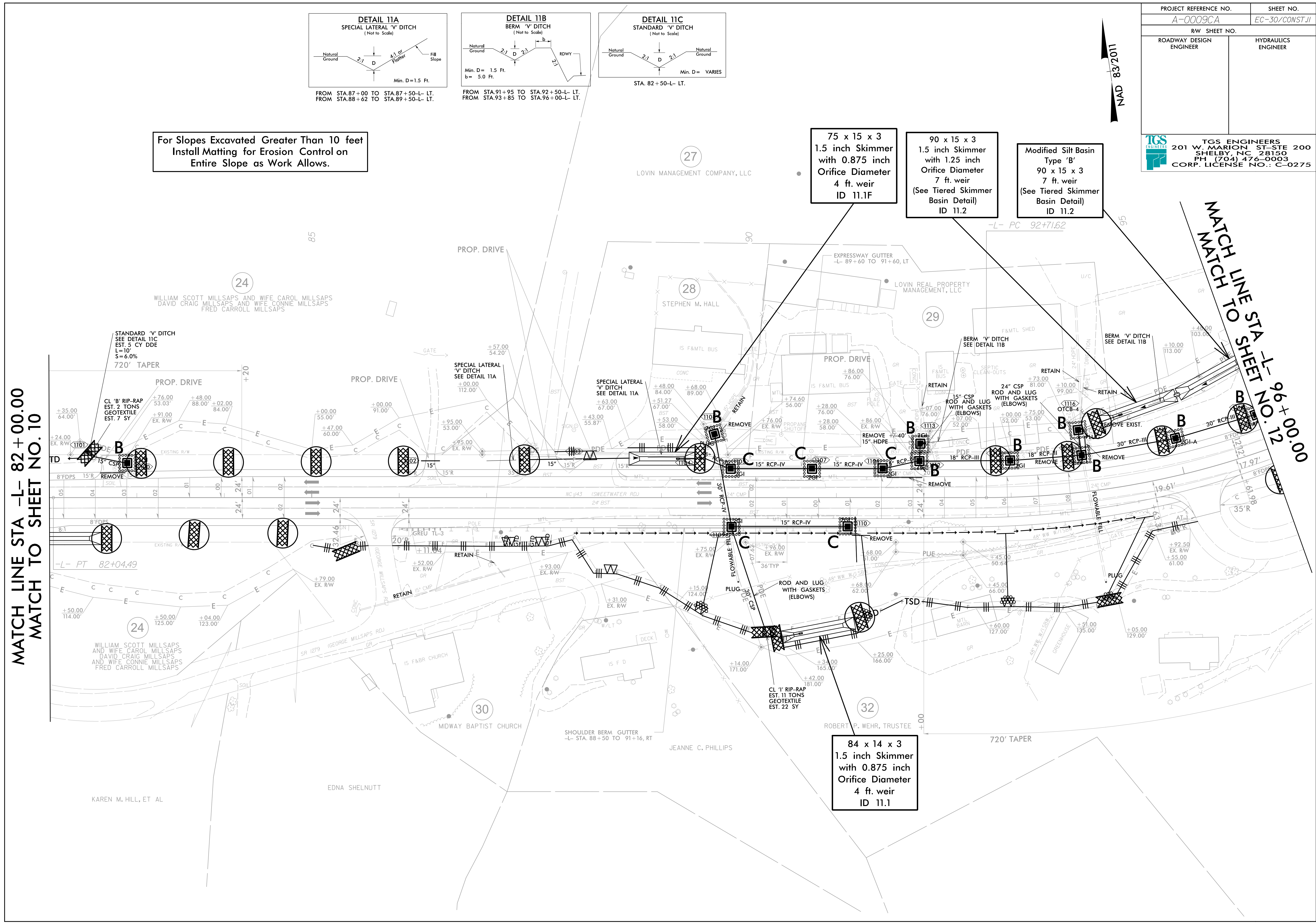
75 x 15 x 3
1.5 inch Skimmer
with 0.875 inch
Orifice Diameter
4 ft. weir
ID 11.1F

90 x 15 x 3
1.5 inch Skimmer
with 1.25 inch
Orifice Diameter
7 ft. weir
(See Tiered Skimmer
Basin Detail)
ID 11.2

Modified Silt Basin
Type 'B'
90 x 15 x 3
7 ft. weir
(See Tiered Skimmer
Basin Detail)
ID 11.2

MATCH LINE STA -L- 82+00.00
MATCH TO SHEET NO.10

MATCH LINE TO SHEET -L- NO.12
96+00.00



84 x 14 x 3
1.5 inch Skimmer
with 0.875 inch
Orifice Diameter
4 ft. weir
ID 11.1

NAD 83/2011