
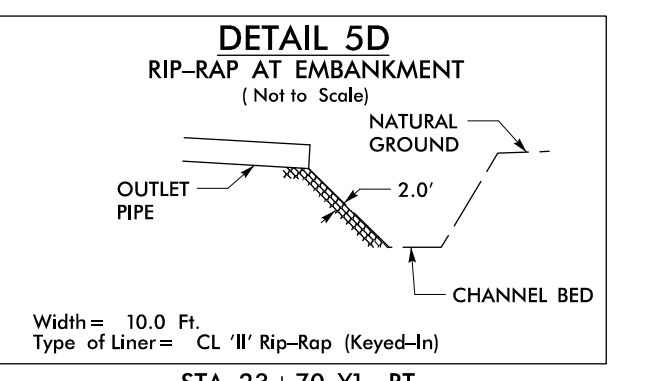
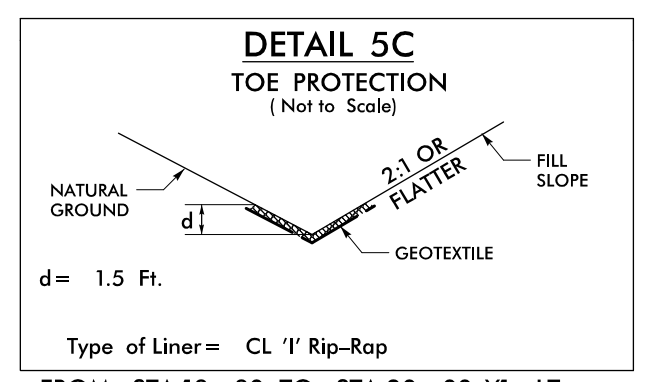
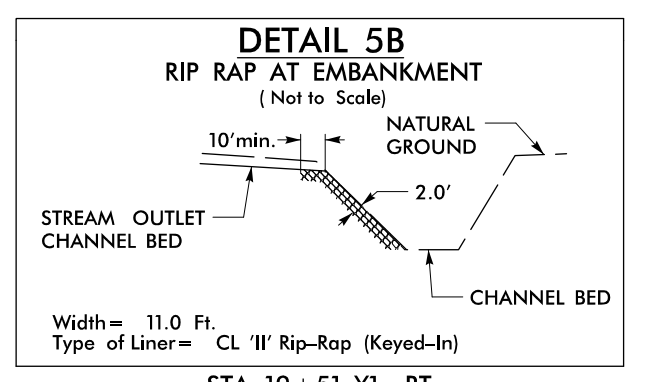
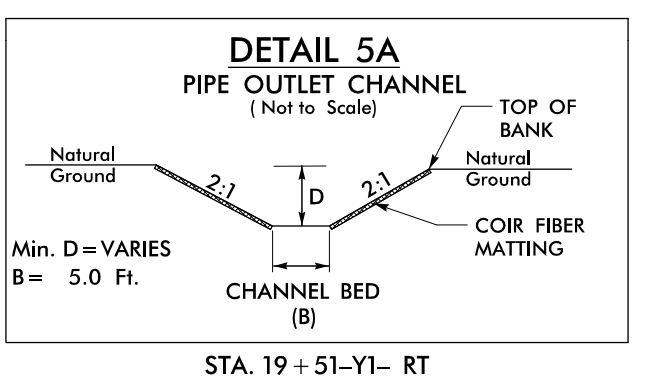


PROJECT REFERENCE NO. A-0009CA		SHEET NO. EC-24/CONST.5	
RW SHEET NO.			
ROADWAY DESIGN ENGINEER		HYDRAULICS ENGINEER	
 <b>TGS ENGINEERS</b> 201 W. MARION ST-STE 200 SHELBY, NC 28150 PH (704) 476-0003 CORP. LICENSE NO.: C-0275			

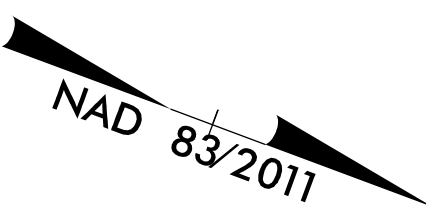


**-Y1A- CURVE DATA**  
 PI Sta 12+48.39  
 $\Delta = 27^\circ 40' 40.3" (LT)$   
 $D = 10' 31' 56.3"$   
 $L = 262.79'$   
 $T = 134.01'$   
 $R = 544.00'$   
 ③ -Y1A- PC 11+4.38

**-Y1- CURVE DATA**  
 PI Sta 24+35.36  
 $\Delta = 38^\circ 00' 53.8" (RT)$   
 $D = 3' 10' 59.2"$   
 $L = 1,194.27'$   
 $T = 620.05'$   
 $R = 1,800.00'$   
 $SE = 0.03'$   
 $DS = 45 MPH$

① -Y1B- PC 13+29.06  
 ② -Y1B- PT 13+99.35

8 EDDIE R. BROOMS, JR.  
 8A EARL SHULER HEIRS

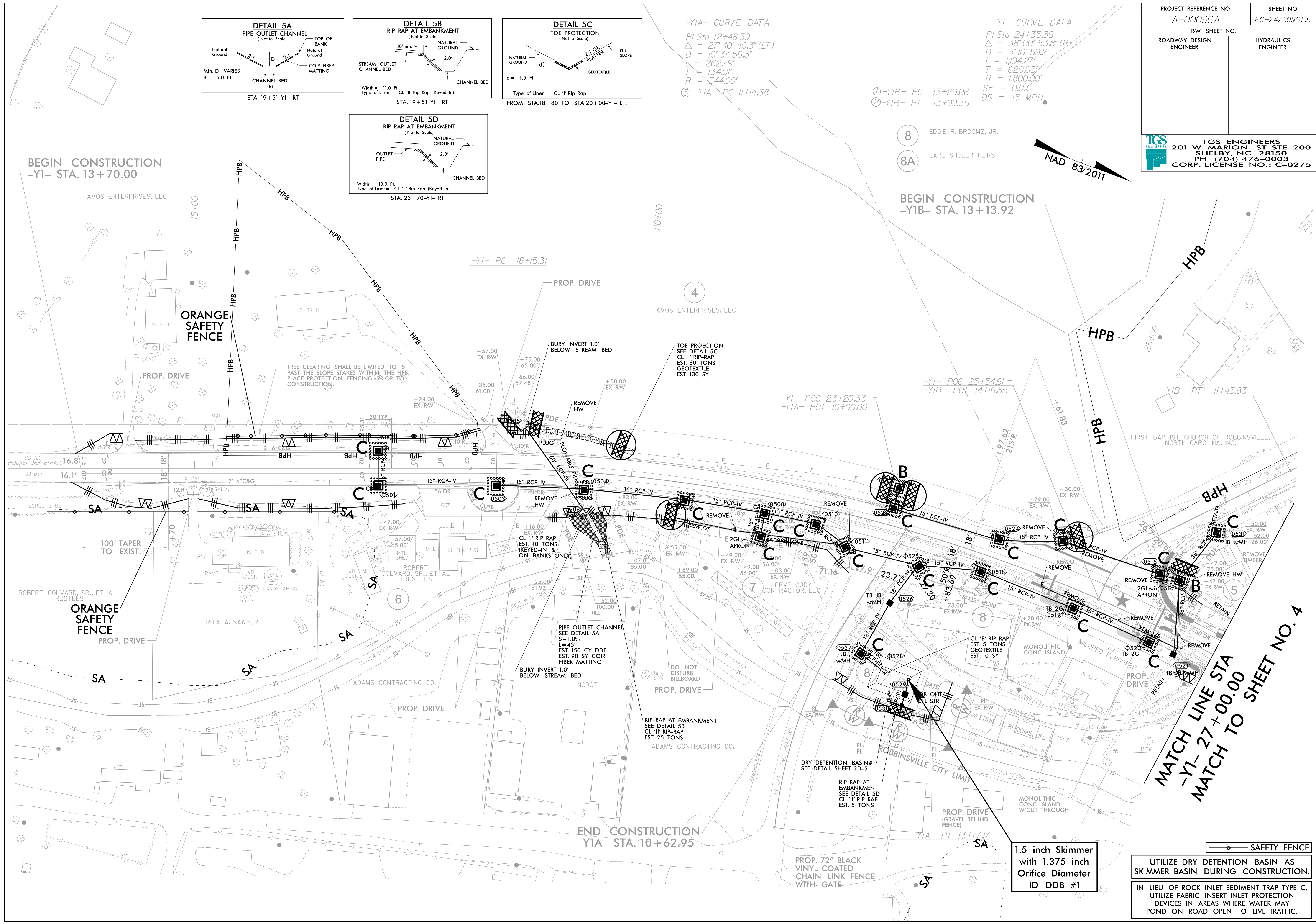


**BEGIN CONSTRUCTION**  
 -Y1- STA. 13+70.00

**BEGIN CONSTRUCTION**  
 -Y1B- STA. 13+13.92

**END CONSTRUCTION**  
 -Y1A- STA. 10+62.95

**MATCH LINE STA**  
 -Y1- 27+00.00  
**MATCH TO SHEET NO. 4**



**1.5 inch Skimmer**  
 with 1.375 inch  
 Orifice Diameter  
 ID DDB #1

UTILIZE DRY DETENTION BASIN AS  
 SKIMMER BASIN DURING CONSTRUCTION.  
 IN LIEU OF ROCK INLET SEDIMENT TRAP TYPE C,  
 UTILIZE FABRIC INSERT INLET PROTECTION  
 DEVICES IN AREAS WHERE WATER MAY  
 POND ON ROAD OPEN TO LIVE TRAFFIC.

SA SAFETY FENCE