
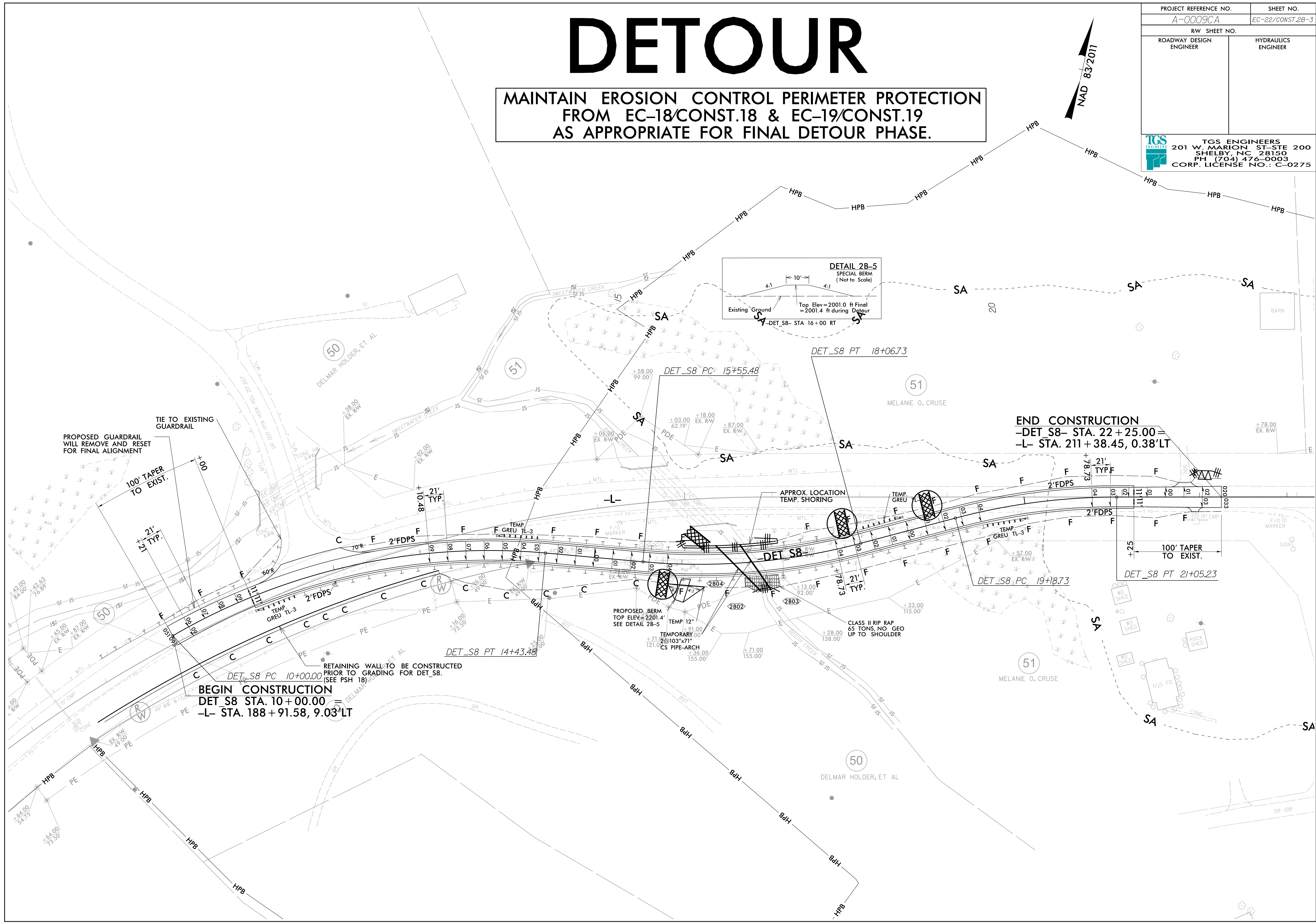
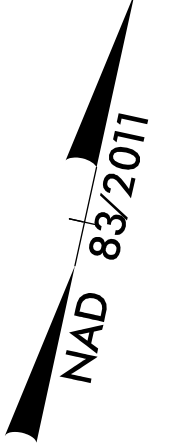


# DETOUR

MAINTAIN EROSION CONTROL PERIMETER PROTECTION FROM EC-18/CONST.18 & EC-19/CONST.19 AS APPROPRIATE FOR FINAL DETOUR PHASE.

PROJECT REFERENCE NO. A-0009CA	SHEET NO. EC-22/CONST.2B-3
RW SHEET NO.	
ROADWAY DESIGN ENGINEER	HYDRAULICS ENGINEER
 <b>TGS ENGINEERS</b> 201 W. MARION ST-STE 200 SHELBY, NC 28150 PH (704) 476-0003 CORP. LICENSE NO.: C-0275	



**END CONSTRUCTION**  
-DET\_S8- STA. 22 + 25.00 =  
-L- STA. 211 + 38.45, 0.38'LT

**BEGIN CONSTRUCTION**  
DET\_S8 STA. 10 + 00.00 =  
-L- STA. 188 + 91.58, 9.03'LT

RETAINING WALL TO BE CONSTRUCTED  
PRIOR TO GRADING FOR DET\_S8.  
(SEE PSH 18)

