
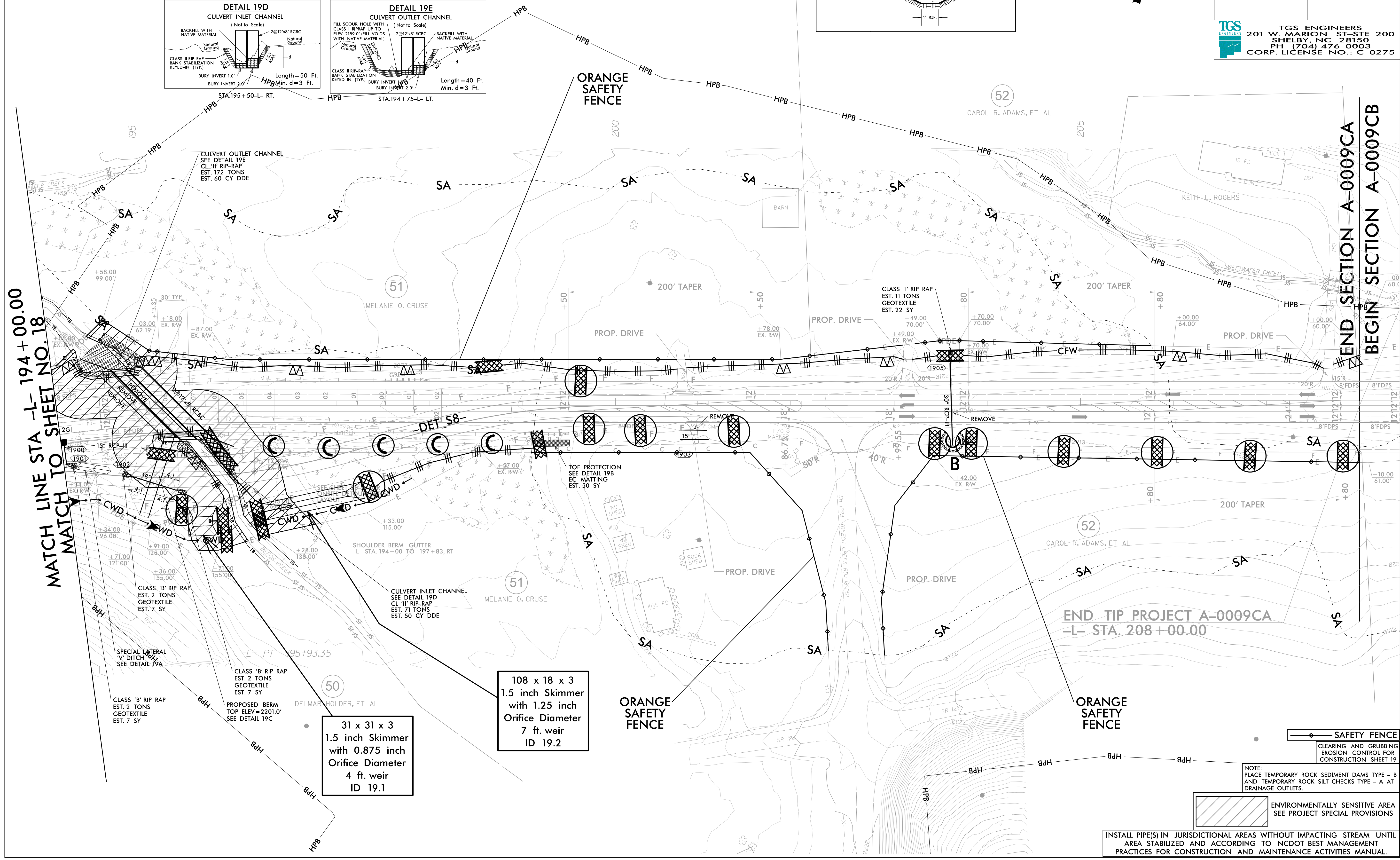
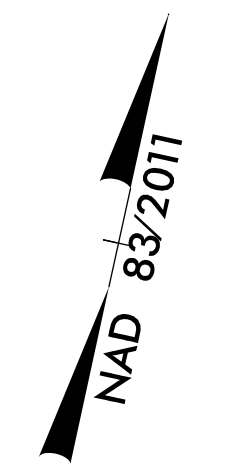
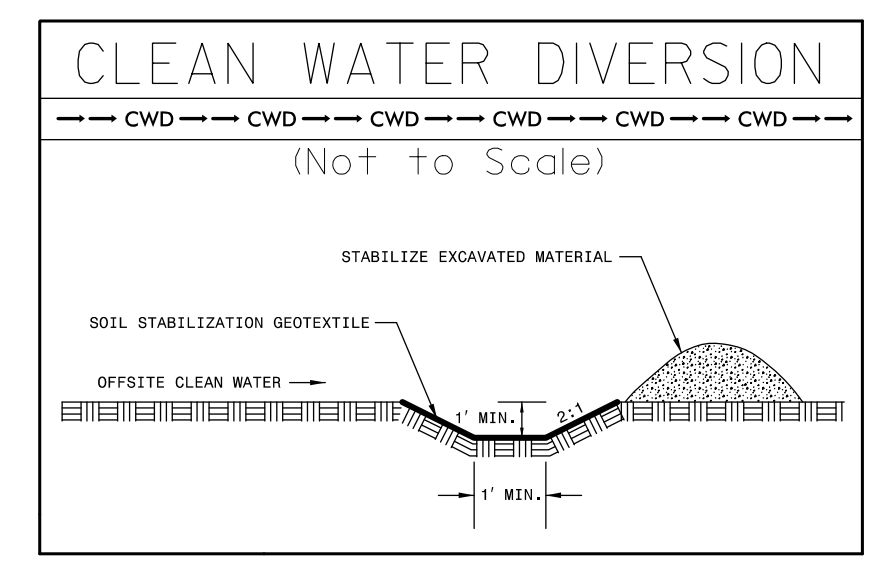
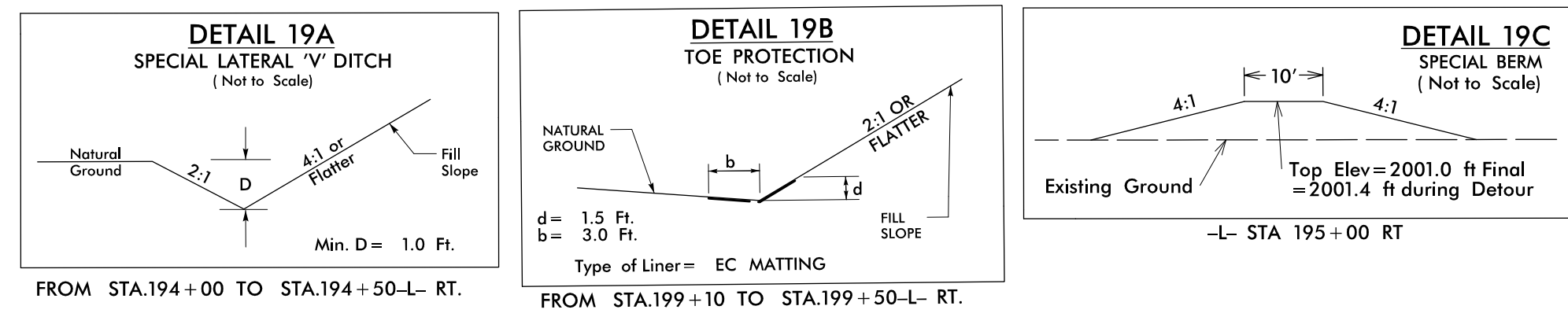


PROJECT REFERENCE NO. A-0009CA	SHEET NO. EC-19/CONST.19
RW SHEET NO.	
ROADWAY DESIGN ENGINEER	HYDRAULICS ENGINEER
 TGS ENGINEERS 201 W. MARION ST. STE 200 SHELBY, NC 28150 PH (704) 476-0003 CORP. LICENSE NO.: C-0275	



MATCH LINE STA -L- 194+00.00
MATCH TO SHEET NO. 18

END SECTION A-0009CA
BEGIN SECTION A-0009CB

END TIP PROJECT A-0009CA
-L- STA. 208+00.00

CLASS 'B' RIP RAP
EST. 2 TONS
GEOTEXTILE
EST. 7 SY

CLASS 'B' RIP RAP
EST. 2 TONS
GEOTEXTILE
EST. 7 SY

31 x 31 x 3
1.5 inch Skimmer
with 0.875 inch
Orifice Diameter
4 ft. weir
ID 19.1

108 x 18 x 3
1.5 inch Skimmer
with 1.25 inch
Orifice Diameter
7 ft. weir
ID 19.2

CULVERT INLET CHANNEL
SEE DETAIL 19D
CL 'I' RIP RAP
EST. 71 TONS
EST. 50 CY DDE

CLASS 'I' RIP RAP
EST. 11 TONS
GEOTEXTILE
EST. 22 SY

NOTE:
PLACE TEMPORARY ROCK SEDIMENT DAMS TYPE - B
AND TEMPORARY ROCK SILT CHECKS TYPE - A AT
DRAINAGE OUTLETS.

ENVIRONMENTALLY SENSITIVE AREA
SEE PROJECT SPECIAL PROVISIONS

INSTALL PIPE(S) IN JURISDICTIONAL AREAS WITHOUT IMPACTING STREAM UNTIL
AREA STABILIZED AND ACCORDING TO NCDOT BEST MANAGEMENT
PRACTICES FOR CONSTRUCTION AND MAINTENANCE ACTIVITIES MANUAL.