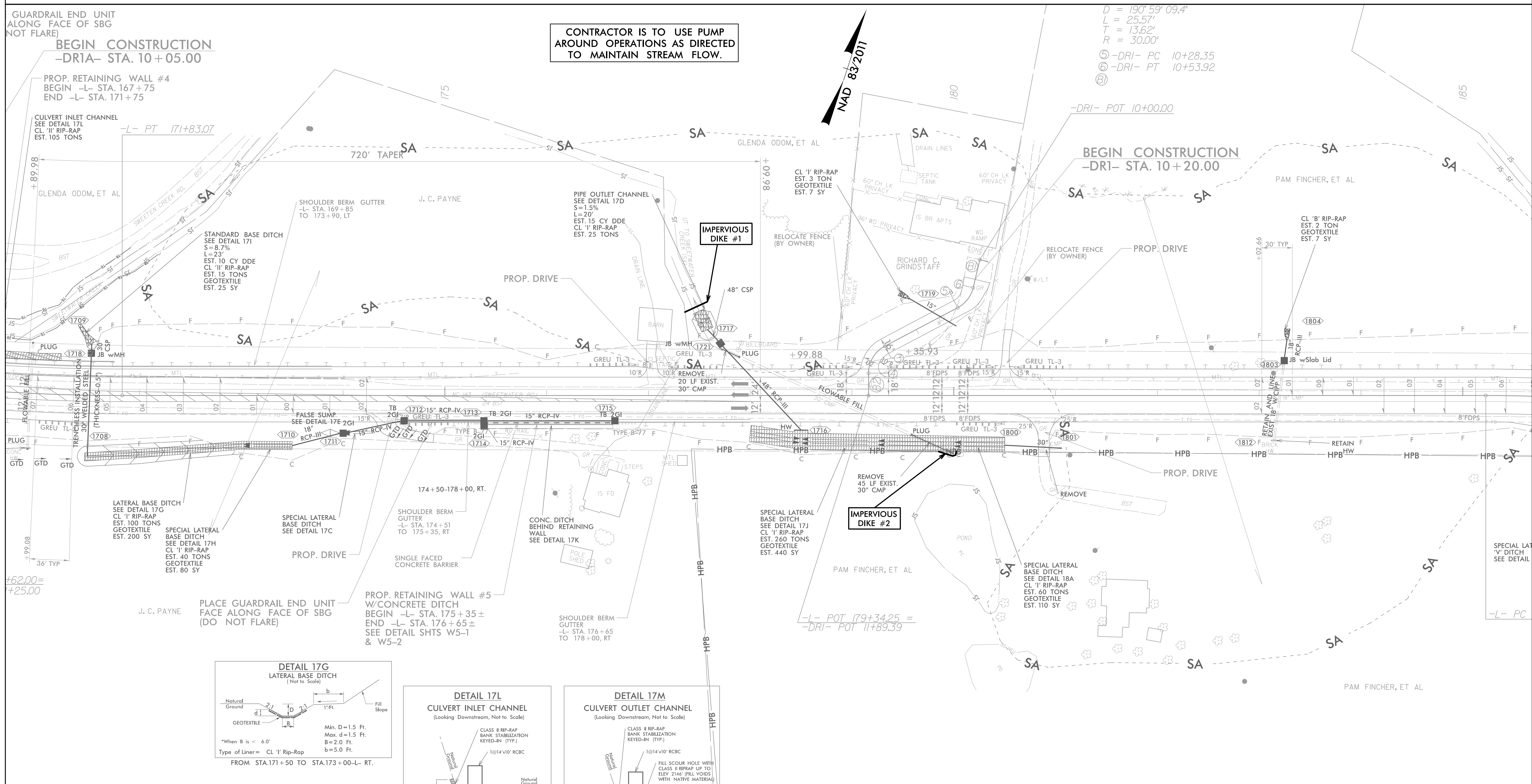


PROJECT REFERENCE NO.	SHEET NO.
A-0009CA	EC-17B/CONST.17
RW SHEET NO.	
ROADWAY DESIGN ENGINEER	HYDRAULICS ENGINEER

PIPE CONSTRUCTION SEQUENCE STA. 178+18 -L-

1. INSTALL IMPERVIOUS DIKES #1 & #2 AND BEGIN PUMP AROUND.
2. DEWATER WORK SITE AS NEEDED INTO SPECIAL STILLING BASIN(S).
3. REMOVE UPSTREAM AND DOWNSTREAM SECTIONS OF EXISTING 30" CMP.
4. CONSTRUCT PROPOSED 48" RCP-III, SPECIAL LATERAL BASIN DETAIL (DETAIL 17J), AND PIPE OUTLET CHANNEL.
5. STOP PUMP AROUND OPERATION, REMOVE IMPERVIOUS DIKES #1 & #2 AND REESTABLISH STREAM.
6. PLUG AND FILL REMAINDER OF EXISTING 30" CMP.



$D = 190' 59' 09.4"$
 $L = 25.57'$
 $T = 13.62'$
 $R = 30.00'$
 (5) -DRI- PC 10+28.35
 (6) -DRI- PT 10+53.92

CONTRACTOR IS TO USE PUMP AROUND OPERATIONS AS DIRECTED TO MAINTAIN STREAM FLOW.

GUARDRAIL END UNIT
 ALONG FACE OF SBG
 (NOT FLARE)
BEGIN CONSTRUCTION
 -DRI- STA. 10+05.00

BEGIN CONSTRUCTION
 -DRI- STA. 10+20.00

