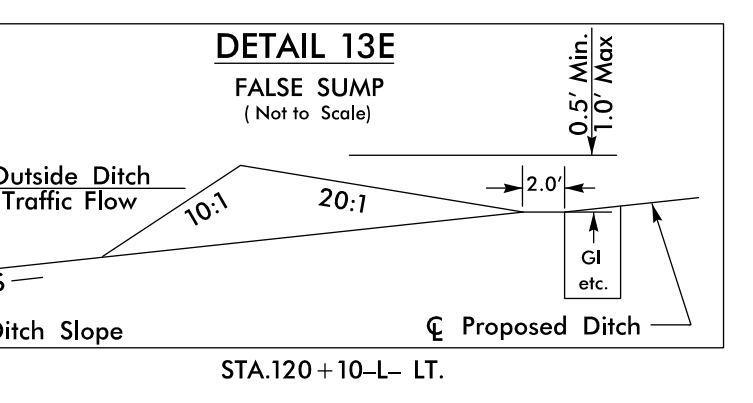
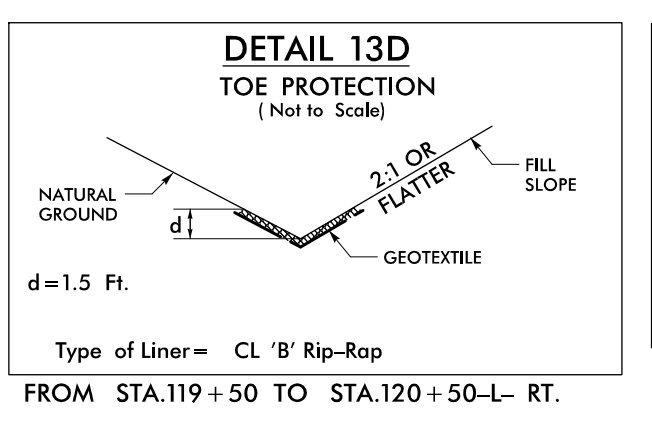
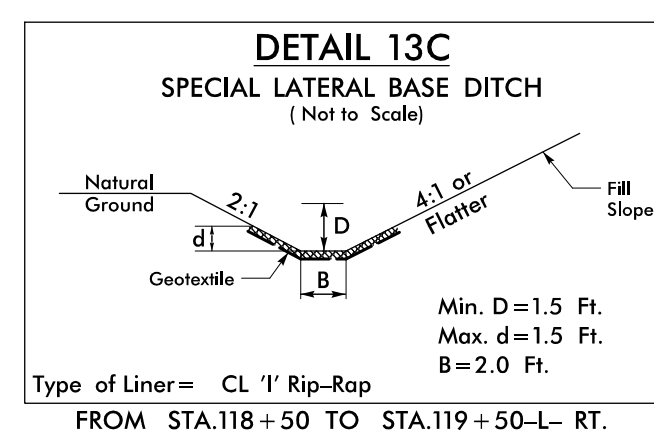
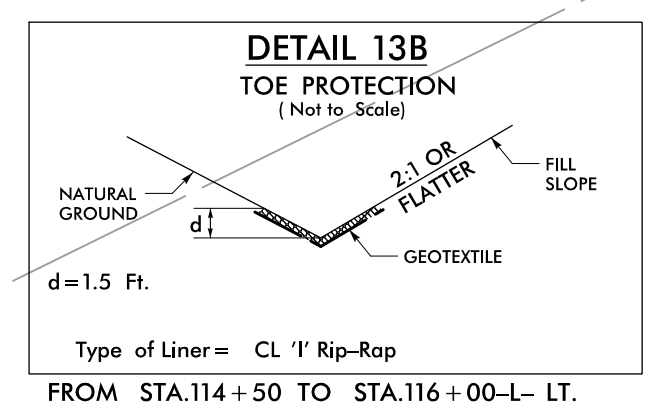
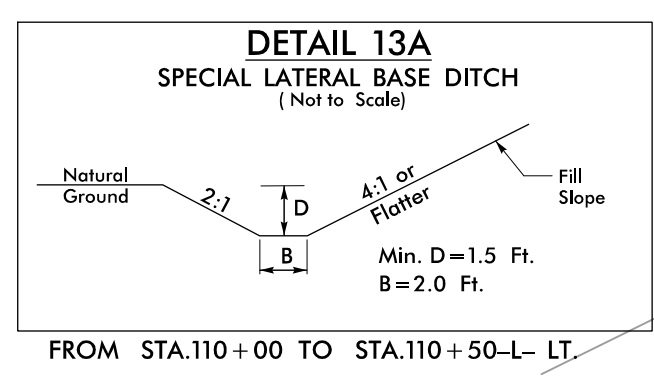
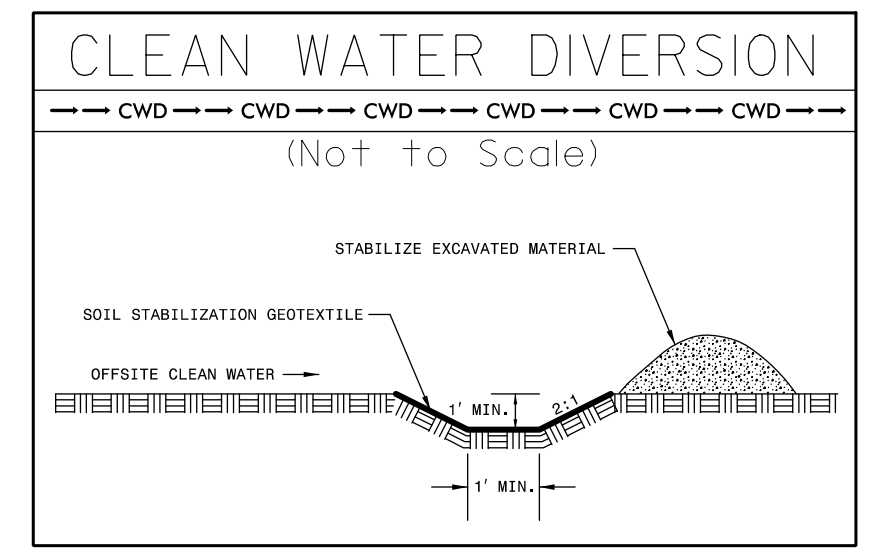


-L- CURVE DATA
 PI Sta 117+87.67
 $\Delta = 39^{\circ} 02' 13.1''$ (RT)
 $D = 5^{\circ} 30' 33.2''$
 $L = 708.58'$
 $T = 368.66'$
 $R = 1,040.00'$
 $SE = 0.08$
 $DS = 55$ MPH



| | |
|---|---------------------|
| PROJECT REFERENCE NO. | SHEET NO. |
| A-0009CA | EC-13/CONST13 |
| RW SHEET NO. | |
| ROADWAY DESIGN ENGINEER | HYDRAULICS ENGINEER |
| TGS ENGINEERS 201 W. MARION ST-STE 200 SHELBY, NC 28150 PH (704) 476-0003 CORP. LICENSE NO.: C-0275 | |



INSTALL PIPE(S) IN JURISDICTIONAL AREAS WITHOUT IMPACTING STREAM UNTIL AREA STABILIZED AND ACCORDING TO NCDOT BEST MANAGEMENT PRACTICES FOR CONSTRUCTION AND MAINTENANCE ACTIVITIES MANUAL.

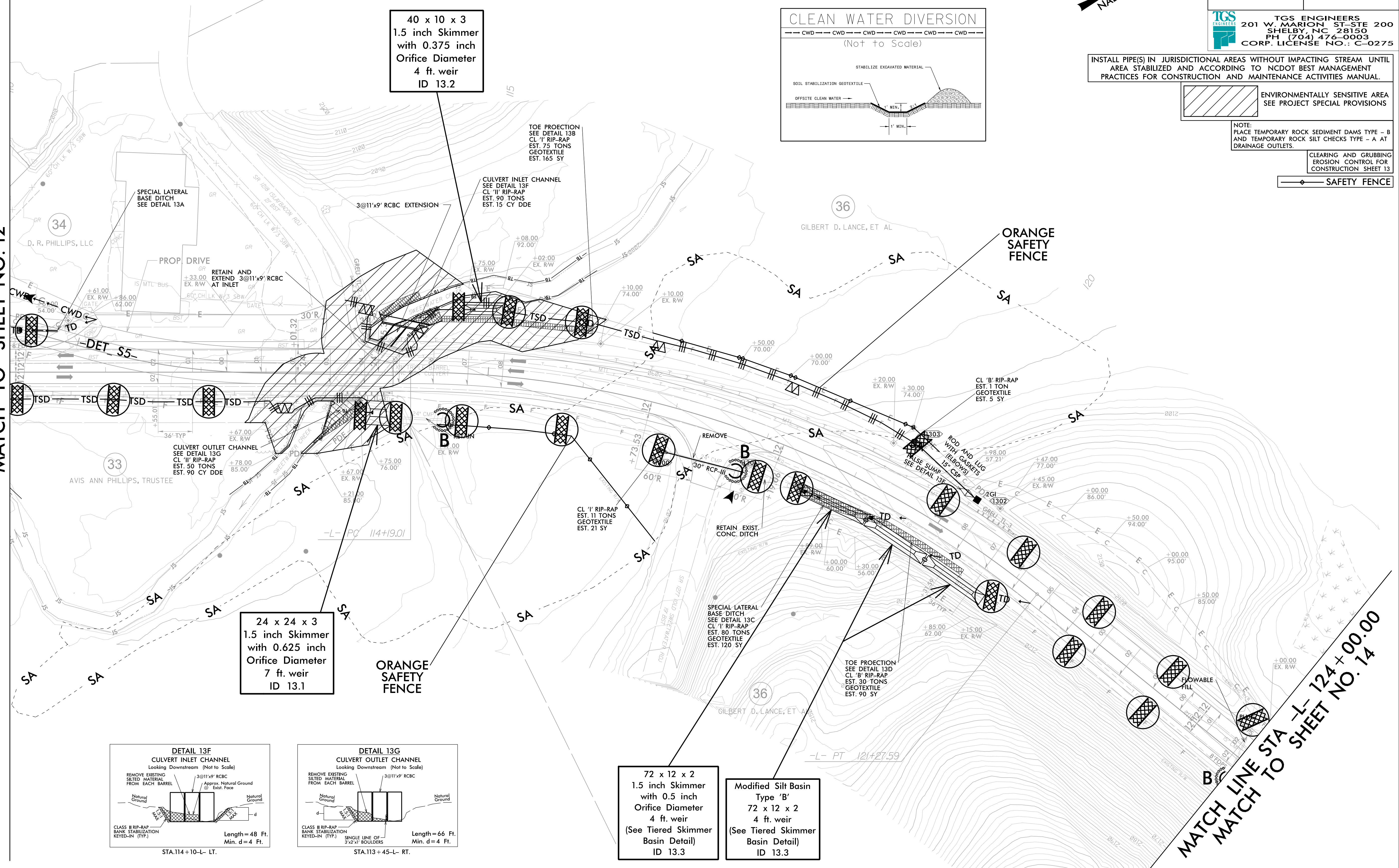
ENVIRONMENTALLY SENSITIVE AREA
 SEE PROJECT SPECIAL PROVISIONS

NOTE:
 PLACE TEMPORARY ROCK SEDIMENT DAMS TYPE - B AND TEMPORARY ROCK SILT CHECKS TYPE - A AT DRAINAGE OUTLETS.

CLEARING AND GRUBBING EROSION CONTROL FOR CONSTRUCTION SHEET 13

SAFETY FENCE

MATCH LINE STA -L- 110+00.00
MATCH TO SHEET NO. 12

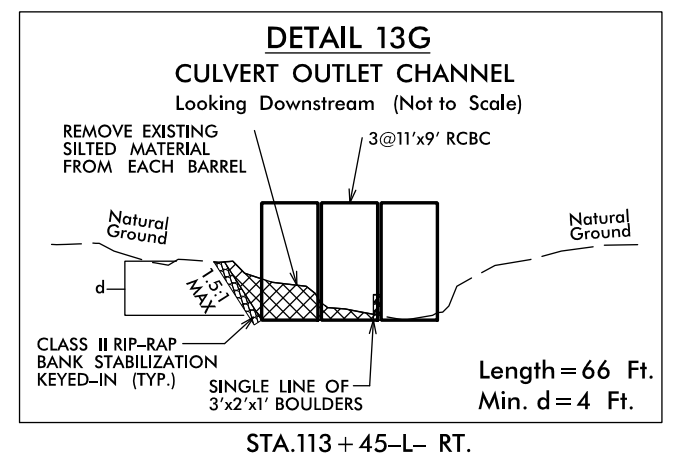
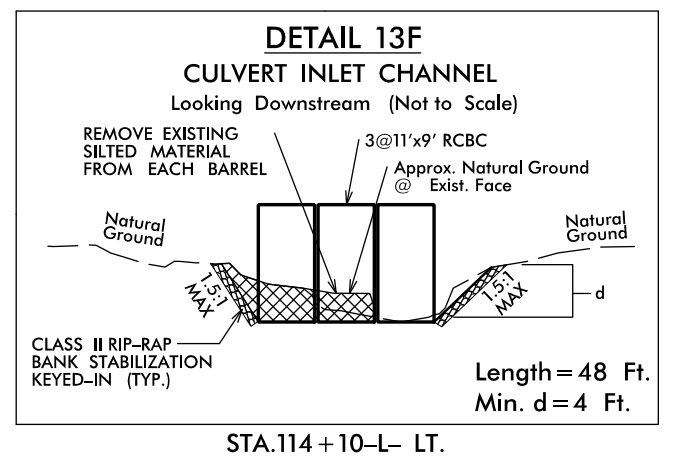


40 x 10 x 3
 1.5 inch Skimmer
 with 0.375 inch
 Orifice Diameter
 4 ft. weir
 ID 13.2

24 x 24 x 3
 1.5 inch Skimmer
 with 0.625 inch
 Orifice Diameter
 7 ft. weir
 ID 13.1

72 x 12 x 2
 1.5 inch Skimmer
 with 0.5 inch
 Orifice Diameter
 4 ft. weir
 (See Tiered Skimmer
 Basin Detail)
 ID 13.3

Modified Silt Basin
 Type 'B'
 72 x 12 x 2
 4 ft. weir
 (See Tiered Skimmer
 Basin Detail)
 ID 13.3



MATCH LINE STA -L- 124+00.00
MATCH TO SHEET NO. 14