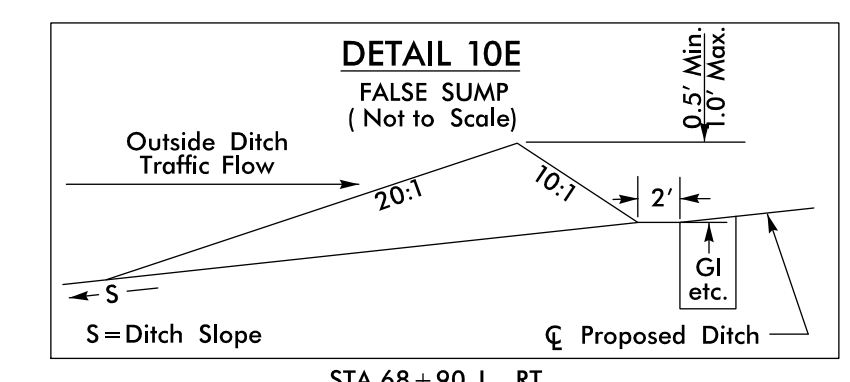
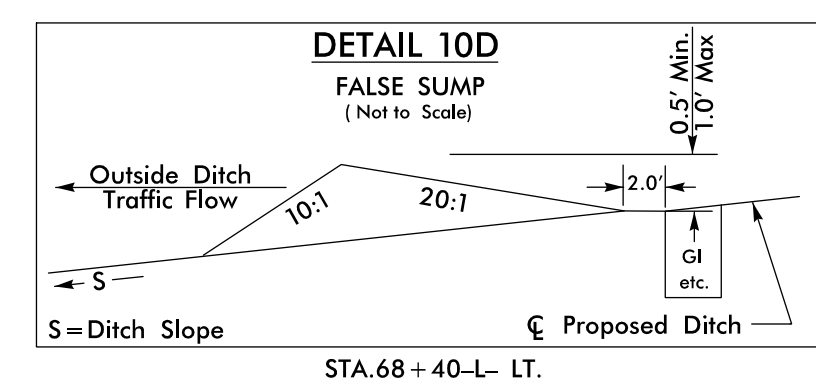
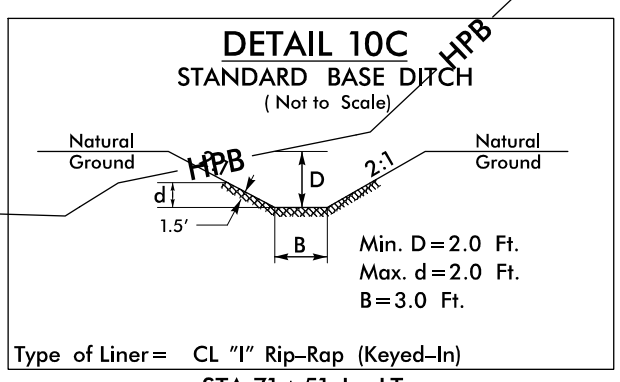
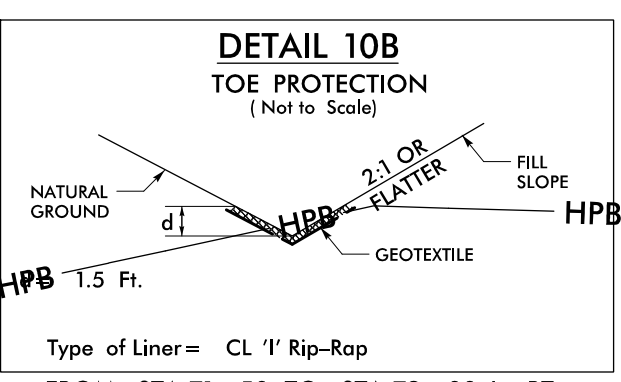
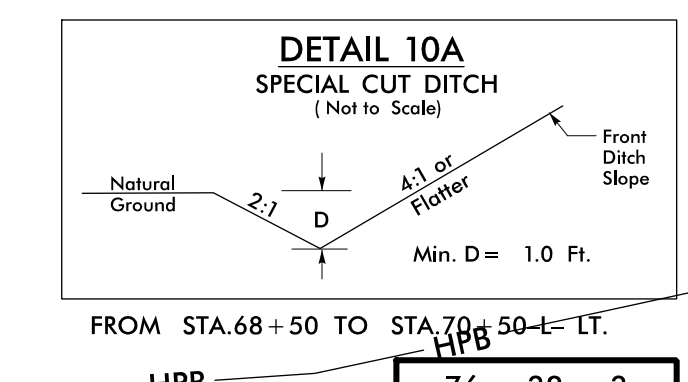
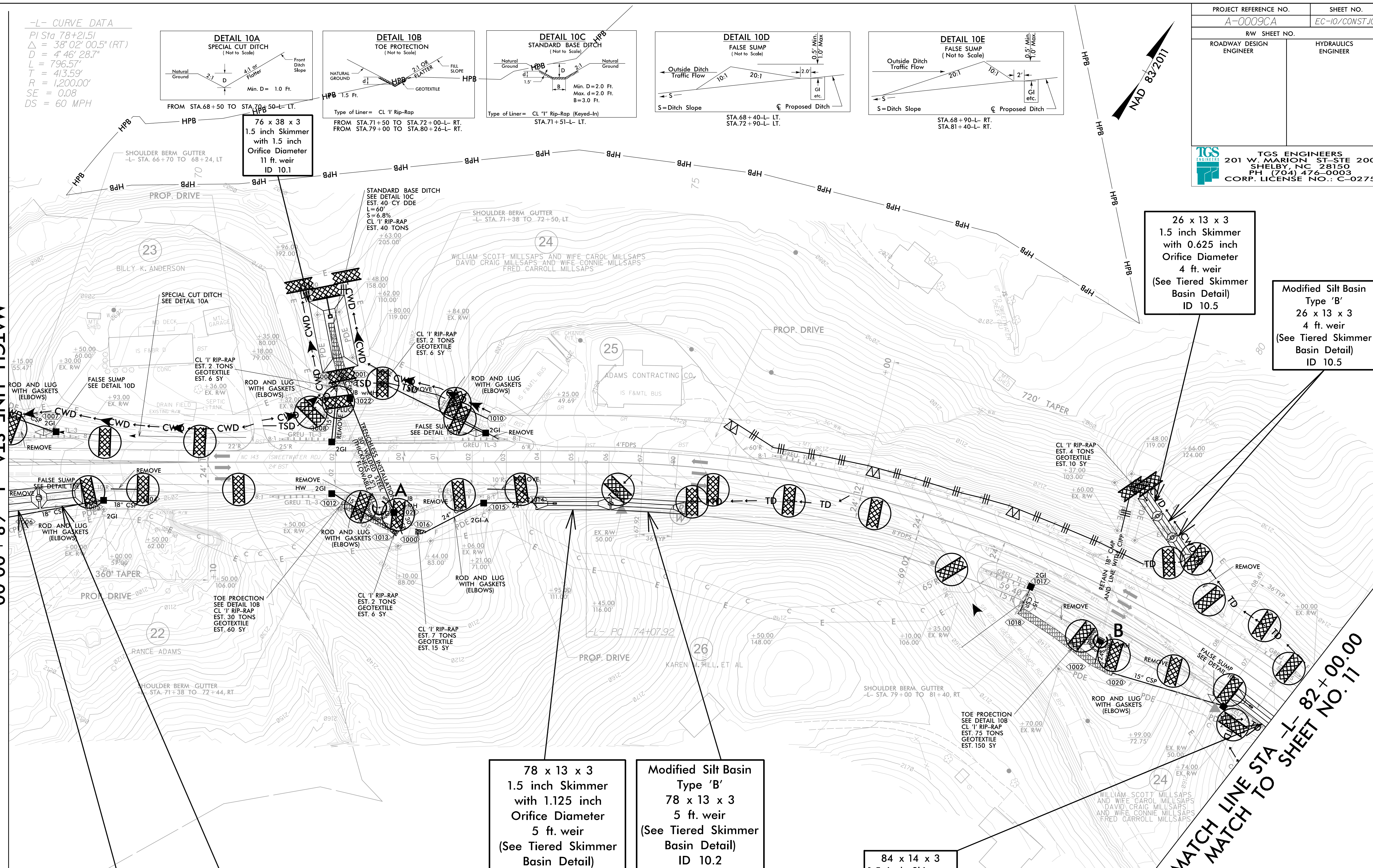


-L- CURVE DATA
 PI Sta 78+21.51
 $\Delta = 38^{\circ}02'00.5''$ (RT)
 $D = 4^{\circ}46'28.7''$
 $L = 796.57'$
 $T = 413.59'$
 $R = 1,200.00'$
 $SE = 0.08$
 $DS = 60$ MPH



PROJECT REFERENCE NO. A-0009CA	SHEET NO. EC-10/CONST.10
RW SHEET NO.	HYDRAULICS ENGINEER
ROADWAY DESIGN ENGINEER	
 TGS ENGINEERS 201 W. MARION ST. STE 200 SHELBY, NC 28150 PH (704) 476-0003 CORP. LICENSE NO.: C-0275	

MATCH LINE STA -L- 68+00.00
MATCH TO SHEET NO. 9



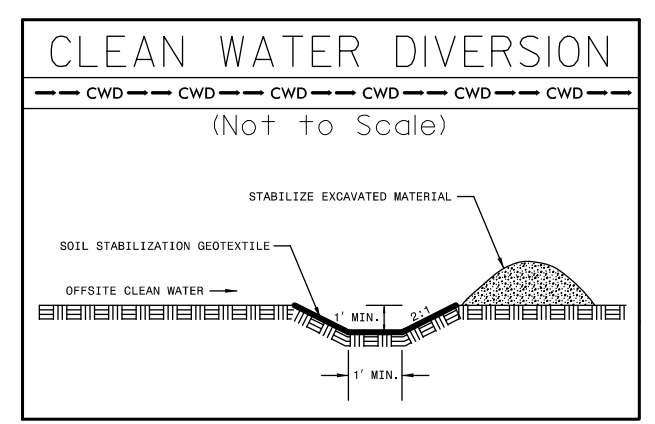
44 x 22 x 3
 1.5 inch Skimmer
 with 1.125 inch
 Orifice Diameter
 7 ft. weir
 (See Tiered Skimmer
 Basin Detail)
 ID 10.4

Modified Silt Basin
 Type 'B'
 44 x 22 x 3
 7 ft. weir
 (See Tiered Skimmer
 Basin Detail)
 ID 10.4

78 x 13 x 3
 1.5 inch Skimmer
 with 1.125 inch
 Orifice Diameter
 5 ft. weir
 (See Tiered Skimmer
 Basin Detail)
 ID 10.2

Modified Silt Basin
 Type 'B'
 78 x 13 x 3
 5 ft. weir
 (See Tiered Skimmer
 Basin Detail)
 ID 10.2

84 x 14 x 3
 1.5 inch Skimmer
 with 0.875 inch
 Orifice Diameter
 4 ft. weir
 ID 10.3



26 x 13 x 3
 1.5 inch Skimmer
 with 0.625 inch
 Orifice Diameter
 4 ft. weir
 (See Tiered Skimmer
 Basin Detail)
 ID 10.5

Modified Silt Basin
 Type 'B'
 26 x 13 x 3
 4 ft. weir
 (See Tiered Skimmer
 Basin Detail)
 ID 10.5

MATCH LINE STA -L- 82+00.00
MATCH TO SHEET NO. 11

CLEARING AND GRUBBING
 EROSION CONTROL FOR
 CONSTRUCTION SHEET 10

NOTE:
 PLACE TEMPORARY ROCK SEDIMENT DAMS TYPE - B
 AND TEMPORARY ROCK SILT CHECKS TYPE - A AT
 DRAINAGE OUTLETS.