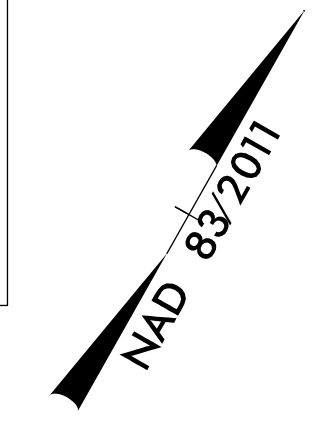
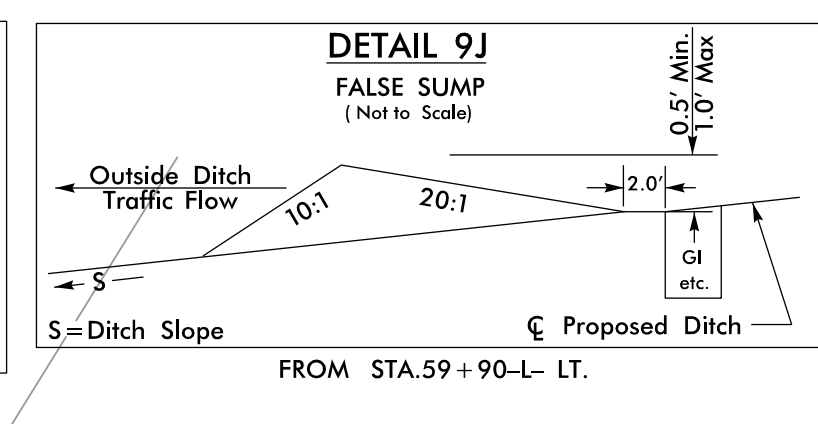
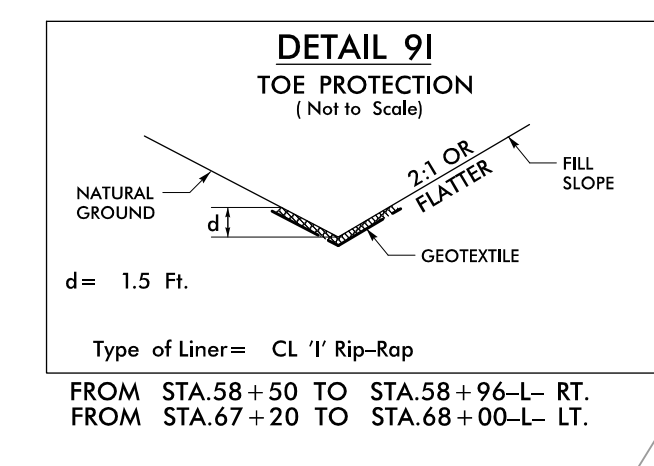
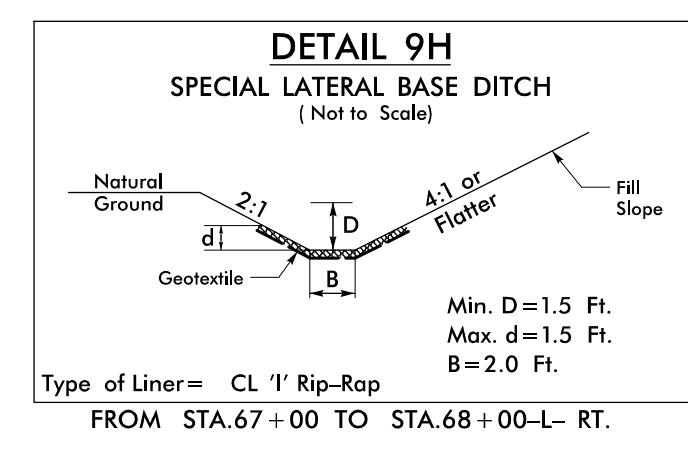
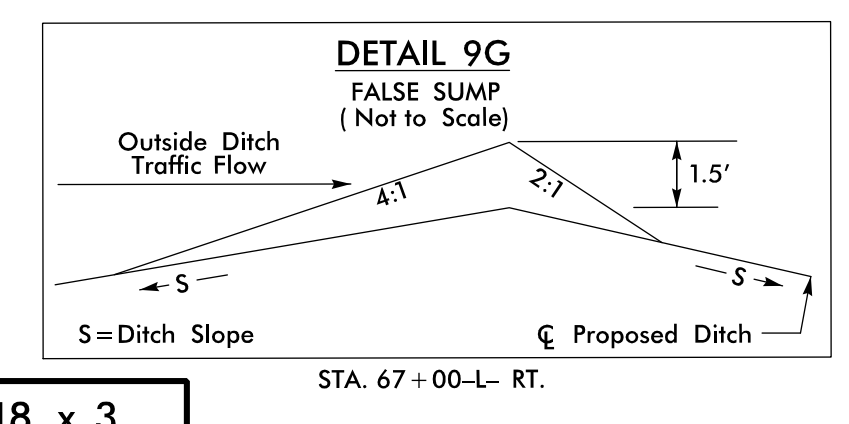


INSTALL PIPE(S) IN JURISDICTIONAL AREAS WITHOUT IMPACTING STREAM UNTIL AREA STABILIZED AND ACCORDING TO NCDOT BEST MANAGEMENT PRACTICES FOR CONSTRUCTION AND MAINTENANCE ACTIVITIES MANUAL.

ENVIRONMENTALLY SENSITIVE AREA SEE PROJECT SPECIAL PROVISIONS

NOTE: PLACE TEMPORARY ROCK SEDIMENT DAMS TYPE - B AND TEMPORARY ROCK SILT CHECKS TYPE - A AT DRAINAGE OUTLETS.

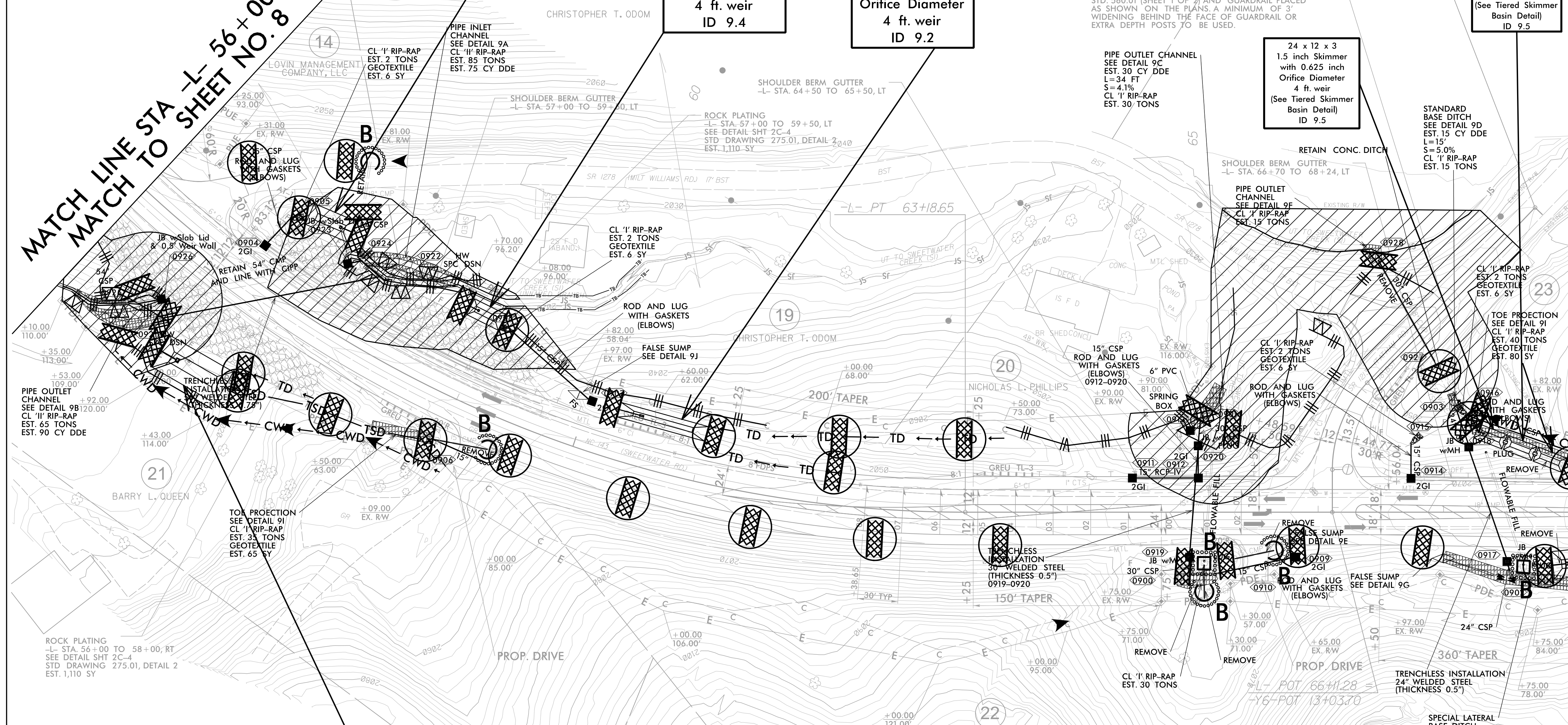
CLEARING AND GRUBBING EROSION CONTROL FOR CONSTRUCTION SHEET 9



PROJECT REFERENCE NO.	SHEET NO.
A-0009CA	EC-09/CONST.9
RW SHEET NO.	
ROADWAY DESIGN ENGINEER	HYDRAULICS ENGINEER

TGS ENGINEERS
201 W. MARION ST-STE 200
SHELBY, NC 28150
PH (704) 476-0003
CORP. LICENSE NO.: C-0275

MATCH LINE STA -L- 56+00.00
MATCH TO SHEET NO. 8.00



36 x 18 x 3
1.5 inch Skimmer
with 0.625 inch
Orifice Diameter
4 ft. weir
ID 9.3

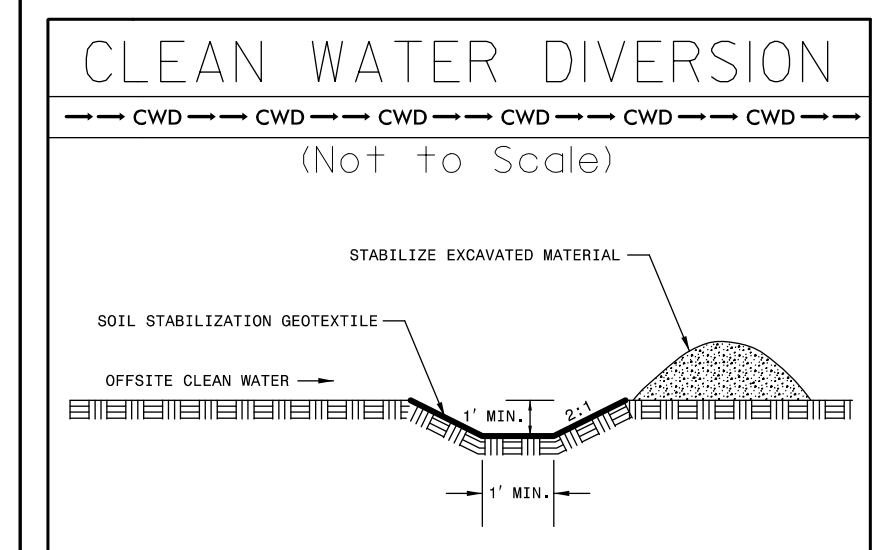
28 x 14 x 3
1.5 inch Skimmer
with 0.375 inch
Orifice Diameter
4 ft. weir
ID 9.4

72 x 12 x 3
1.5 inch Skimmer
with 0.75 inch
Orifice Diameter
4 ft. weir
ID 9.2

BEGIN CONSTRUCTION
-Y6- STA. 11+05.00

Modified Silt Basin
Type 'B'
24 x 12 x 3
4 ft. weir
(See Tiered Skimmer
Basin Detail)
ID 9.5

24 x 12 x 3
1.5 inch Skimmer
with 0.625 inch
Orifice Diameter
4 ft. weir
(See Tiered Skimmer
Basin Detail)
ID 9.5



58 x 29 x 3
1.5 inch Skimmer
with 1.25 inch
Orifice Diameter
6 ft. weir
ID 9.1

