
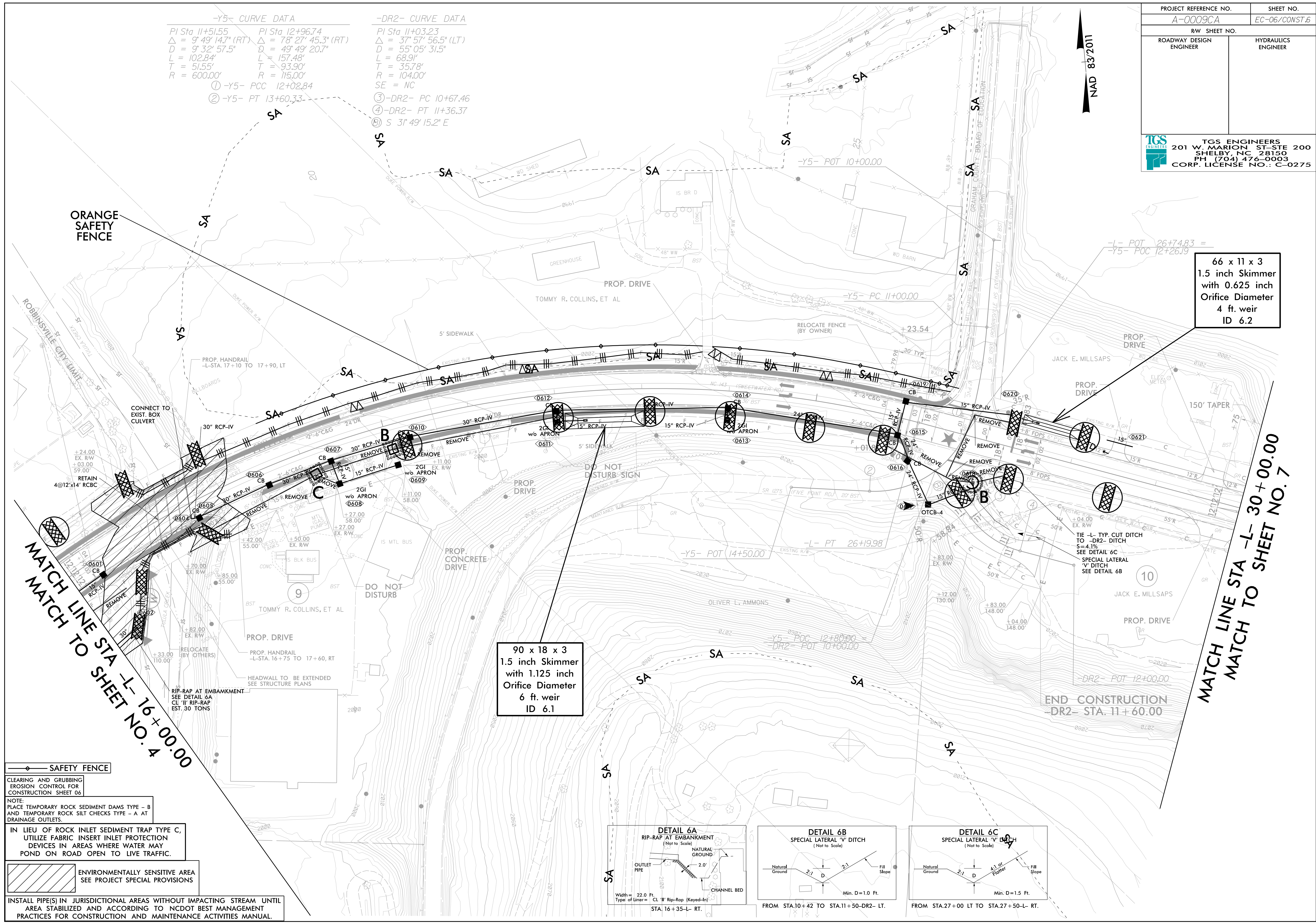


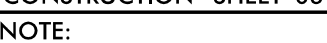
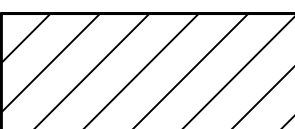


-Y5- CURVE DATA		-DR2- CURVE DATA	
PI Sta 11+51.55	PI Sta 12+96.74	PI Sta 11+03.23	
$\Delta = 9^{\circ} 49' 14.7''$ (RT)	$\Delta = 78^{\circ} 27' 45.3''$ (RT)	$\Delta = 37^{\circ} 57' 56.5''$ (LT)	
$D = 9^{\circ} 32' 57.5''$	$D = 49^{\circ} 49' 20.7''$	$D = 55^{\circ} 05' 31.5''$	
$L = 102.84'$	$L = 157.48'$	$L = 68.91'$	
$T = 51.55'$	$T = 93.90'$	$T = 35.78'$	
$R = 600.00'$	$R = 115.00'$	$R = 104.00'$	
① -Y5- PCC 12+02.84		③ -DR2- PC 10+67.46	
② -Y5- PT 13+60.33		④ -DR2- PT 11+36.37	
		⑤ S 31° 49' 15.2" E	
		SE = NC	

PROJECT REFERENCE NO. A-0009CA	SHEET NO. EC-06/CONST.6
RW SHEET NO.	
ROADWAY DESIGN ENGINEER	HYDRAULICS ENGINEER
 <b>TGS ENGINEERS</b> 201 W. MARION ST-STE 200 SHELBY, NC 28150 PH (704) 476-0003 CORP. LICENSE NO.: C-0275	



-  SAFETY FENCE
-  CLEARING AND GRUBBING
-  EROSION CONTROL FOR CONSTRUCTION SHEET 06
- NOTE:  
PLACE TEMPORARY ROCK SEDIMENT DAMS TYPE - B AND TEMPORARY ROCK SILT CHECKS TYPE - A AT DRAINAGE OUTLETS.
- IN LIEU OF ROCK INLET SEDIMENT TRAP TYPE C, UTILIZE FABRIC INSERT INLET PROTECTION DEVICES IN AREAS WHERE WATER MAY POND ON ROAD OPEN TO LIVE TRAFFIC.
-  ENVIRONMENTALLY SENSITIVE AREA SEE PROJECT SPECIAL PROVISIONS
- INSTALL PIPE(S) IN JURISDICTIONAL AREAS WITHOUT IMPACTING STREAM UNTIL AREA STABILIZED AND ACCORDING TO NCDOT BEST MANAGEMENT PRACTICES FOR CONSTRUCTION AND MAINTENANCE ACTIVITIES MANUAL.

90 x 18 x 3  
1.5 inch Skimmer  
with 1.125 inch  
Orifice Diameter  
6 ft. weir  
ID 6.1

66 x 11 x 3  
1.5 inch Skimmer  
with 0.625 inch  
Orifice Diameter  
4 ft. weir  
ID 6.2

MATCH LINE STA -L- 16+00.00  
MATCH TO SHEET NO. 4

MATCH LINE STA -L- 30+00.00  
MATCH TO SHEET NO. 7

