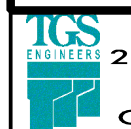
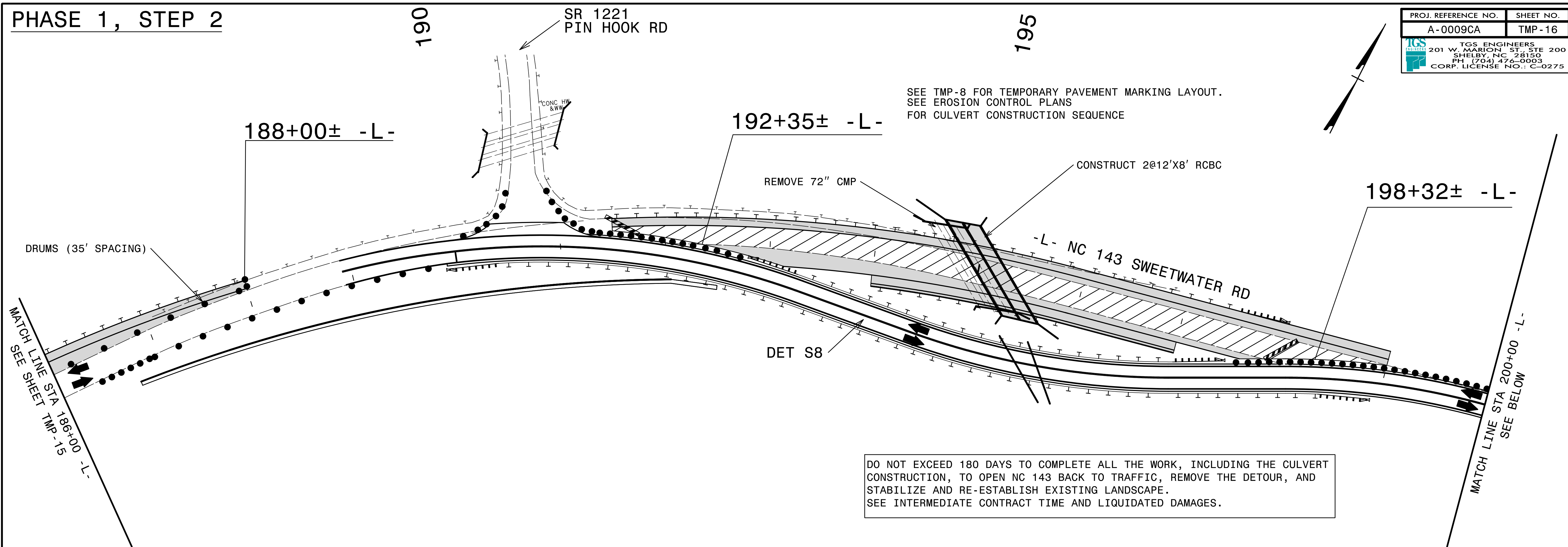
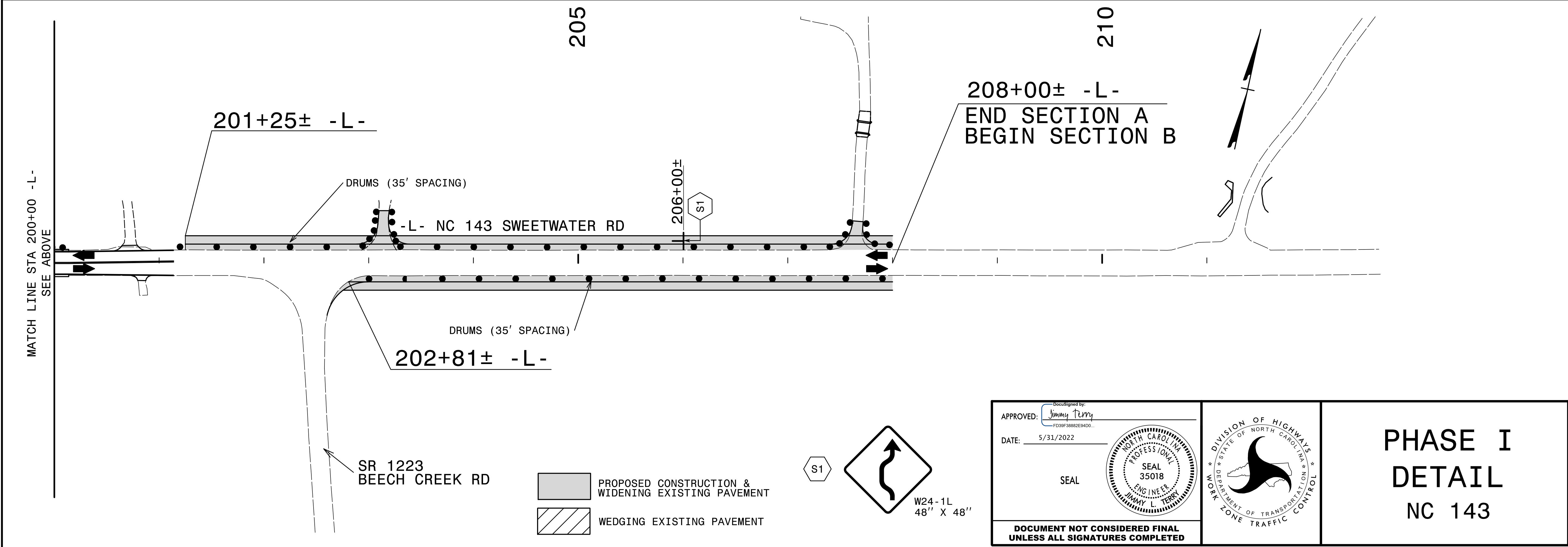


PHASE 1, STEP 2

PROJ. REFERENCE NO. A-0009CA	SHEET NO. TMP-16
 TGS ENGINEERS 201 W. MARION ST. STE 200 SHELBY, NC 28150 PH (704) 476-0003 CORP. LICENSE NO.: C-0275	



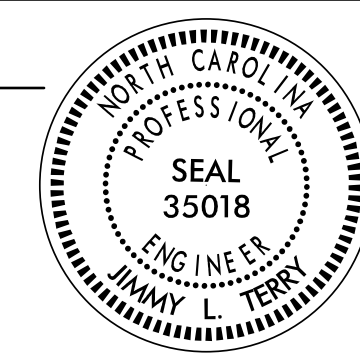
DO NOT EXCEED 180 DAYS TO COMPLETE ALL THE WORK, INCLUDING THE CULVERT CONSTRUCTION, TO OPEN NC 143 BACK TO TRAFFIC, REMOVE THE DETOUR, AND STABILIZE AND RE-ESTABLISH EXISTING LANDSCAPE. SEE INTERMEDIATE CONTRACT TIME AND LIQUIDATED DAMAGES.



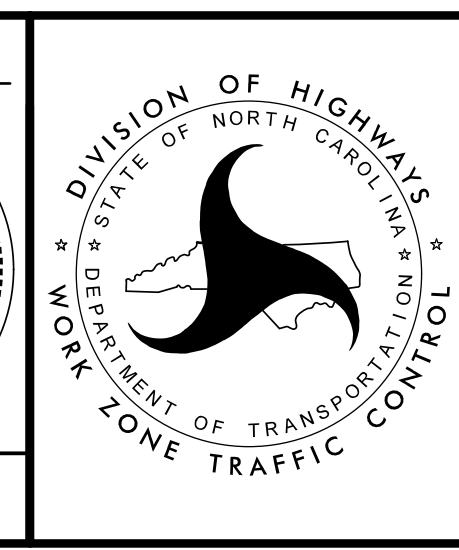
APPROVED: *Jimmy Terry*
FD38F3882E94D0

DATE: 5/31/2022

SEAL



**DOCUMENT NOT CONSIDERED FINAL
UNLESS ALL SIGNATURES COMPLETED**



PHASE I DETAIL NC 143

5/16/2022
 S:\NC\A-0009\Traffic\TrafficControl\TCP\A-0009CA\A-0009CA_TC_TMP_16(PHL_S2).dgn
 User: jsmelvin