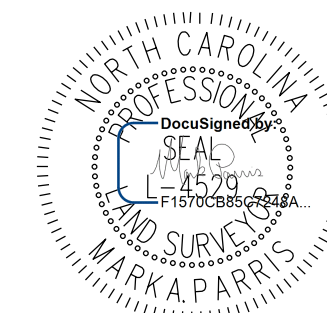


Location and Surveys



PROJECT SURVEYOR

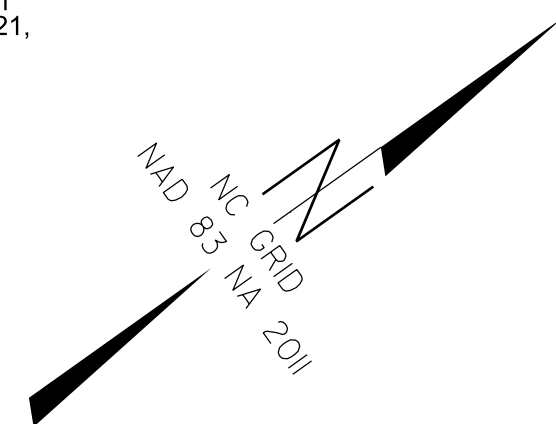


DOCUMENT NOT CONSIDERED FINAL UNLESS ALL SIGNATURES COMPLETED

I, Mark A. Parris, certify that the right of way and permanent easement monumentation for this project shown herein was completed under my direct and responsible charge from an actual survey made under my supervision; that all horizontal closures had a minimum ratio of precision of 1:10,000 (Class A). Field work was performed from 7/26/21 to 8/27/21, and all coordinates are based on NAD83/2011. That this survey was performed to meet the requirements of 21NCAC 56.1600 as applicable.

This 1st day of Sept., 2021.

M.A. Parris
Professional Land Surveyor L-4529



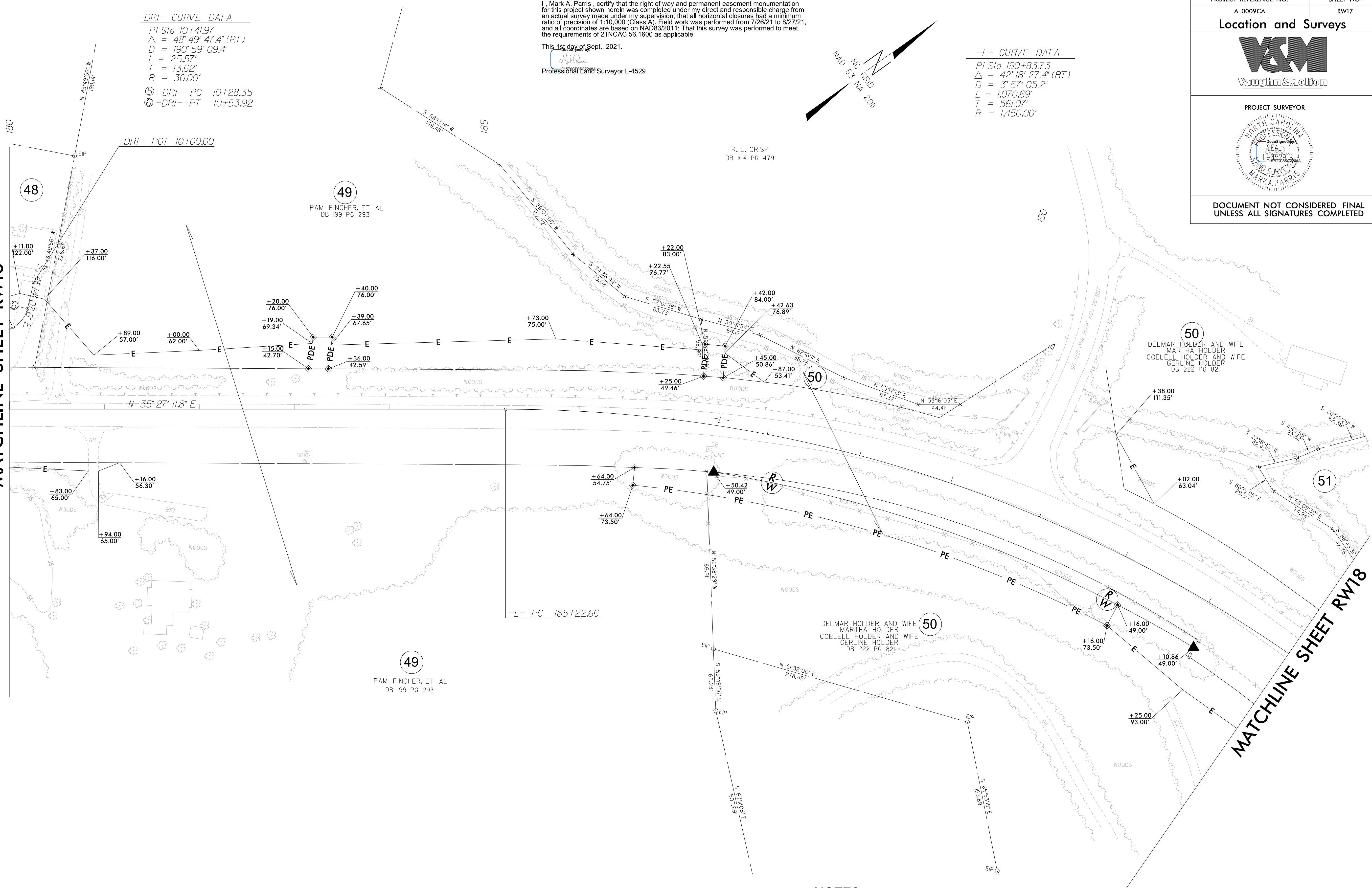
-DRI- CURVE DATA
 PI Sta 10+41.97
 $\Delta = 48^\circ 49' 47.4" (RT)$
 $D = 190' 59" 09.4"$
 $L = 25.57'$
 $T = 13.62'$
 $R = 30.00'$
 (5) -DRI- PC 10+28.35
 (6) -DRI- PT 10+53.92

-L- CURVE DATA
 PI Sta 190+83.73
 $\Delta = 42^\circ 18' 27.4" (RT)$
 $D = 3^\circ 57' 05.2"$
 $L = 1,070.69'$
 $T = 561.07'$
 $R = 1,450.00'$

REVISIONS

MATCHLINE SHEET RW16

MATCHLINE SHEET RW18



NOTES:

1. IF FURTHER INFORMATION REGARDING PROJECT CONTROL IS NEEDED PLEASE CONTACT THE LOCATION AND SURVEYS UNIT.
2. PROJECT CONTROL WAS ESTABLISHED USING GNSS, THE GLOBAL NAVIGATION SATELLITE SYSTEM.
3. RIGHT OF WAY MONUMENTATION ESTABLISHED 7/26/21 TO 8/27/21.

7 MAY 2022 10:45
 I:\NC\552\112-21\A-0009CA ROW Staking\Survey\RW and Control Sheets\A-0009CA\0009CA_1s_RW17.dgn
 Jlgordon