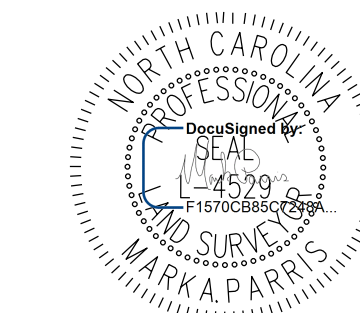


Location and Surveys



PROJECT SURVEYOR



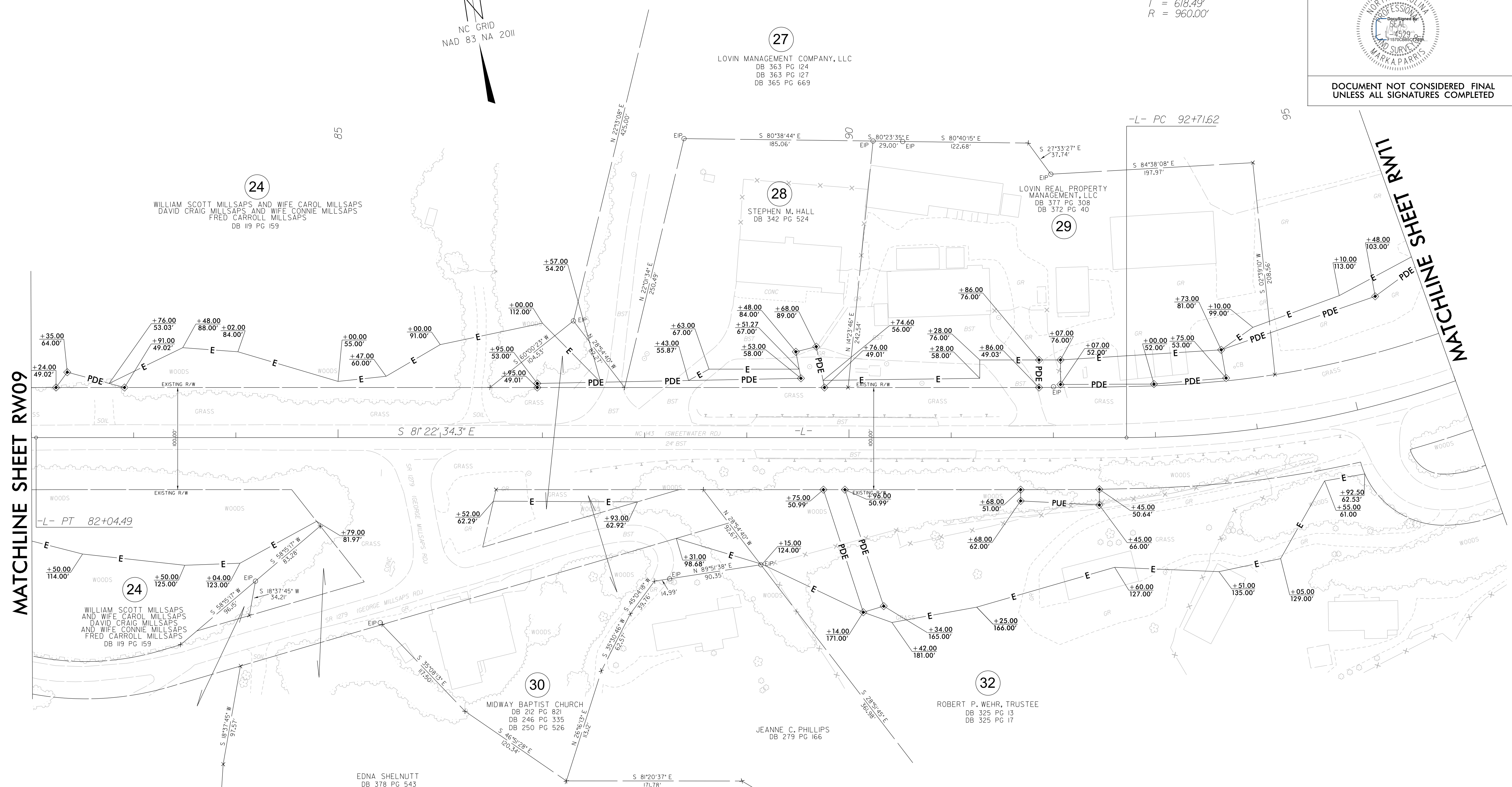
DOCUMENT NOT CONSIDERED FINAL UNLESS ALL SIGNATURES COMPLETED

I, Mark A. Parris, certify that the right of way and permanent easement monumentation for this project shown herein was completed under my direct and responsible charge from an actual survey made under my supervision; that all horizontal closures had a minimum ratio of precision of 1:10,000 (Class A). Field work was performed from 7/26/21 to 8/27/21, and all coordinates are based on NAD83/2011. That this survey was performed to meet the requirements of 21NCAC 56.1600 as applicable.

This is a true and correct copy of the original survey.

Professional Land Surveyor L-4529
 F15700885C7245A

-L- CURVE DATA
 PI Sta 98+90.11
 $\Delta = 65^{\circ} 35' 01.6''$ (LT)
 D = 5' 58" 05.9"
 L = 1,098.87'
 T = 618.49'
 R = 960.00'



MATCHLINE SHEET RW09

MATCHLINE SHEET RW11

REVISIONS

3 MAY 2022 11:10 AM
 I:\Projects\2022\112-21-A-0009CA ROW Staking\Survey\RW and Control Sheets\A-0009CA\0009CA-1s-RW10.dgn
 Jlgordon

NOTES:

1. IF FURTHER INFORMATION REGARDING PROJECT CONTROL IS NEEDED PLEASE CONTACT THE LOCATION AND SURVEYS UNIT.
2. PROJECT CONTROL WAS ESTABLISHED USING GNSS, THE GLOBAL NAVIGATION SATELLITE SYSTEM.
3. RIGHT OF WAY MONUMENTATION ESTABLISHED 7/26/21 TO 8/27/21.

KAREN M. HILL, ET AL
 DB 243 PG 546

EDNA SHELNUTT
 DB 378 PG 543

MIDWAY BAPTIST CHURCH
 DB 212 PG 821
 DB 246 PG 335
 DB 250 PG 526

JEANNE C. PHILLIPS
 DB 279 PG 166

ROBERT P. WEHR, TRUSTEE
 DB 325 PG 13
 DB 325 PG 17

LOVIN MANAGEMENT COMPANY, LLC
 DB 363 PG 124
 DB 363 PG 127
 DB 365 PG 669

LOVIN REAL PROPERTY MANAGEMENT, LLC
 DB 377 PG 308
 DB 372 PG 40

WILLIAM SCOTT MILLSAPS AND WIFE CAROL MILLSAPS
 DAVID CRAIG MILLSAPS AND WIFE CONNIE MILLSAPS
 FRED CARROLL MILLSAPS
 DB 119 PG 159

STEPHEN M. HALL
 DB 342 PG 524