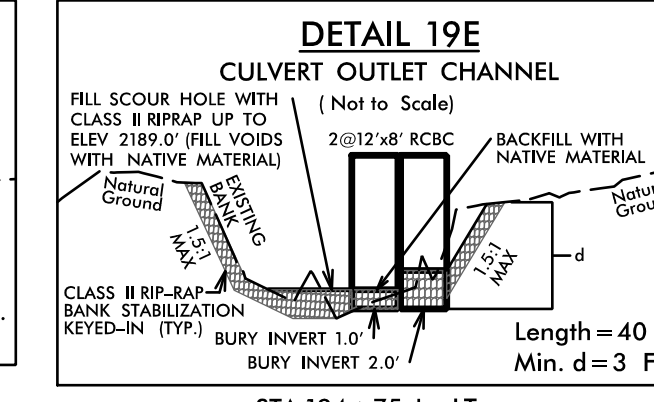
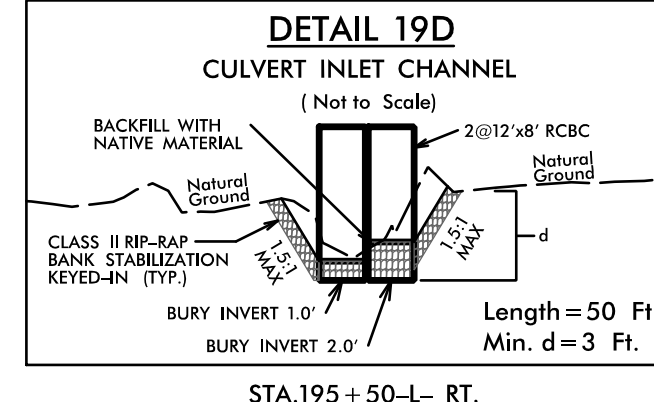
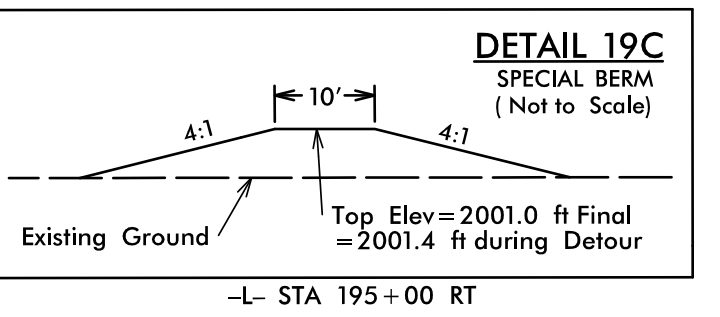
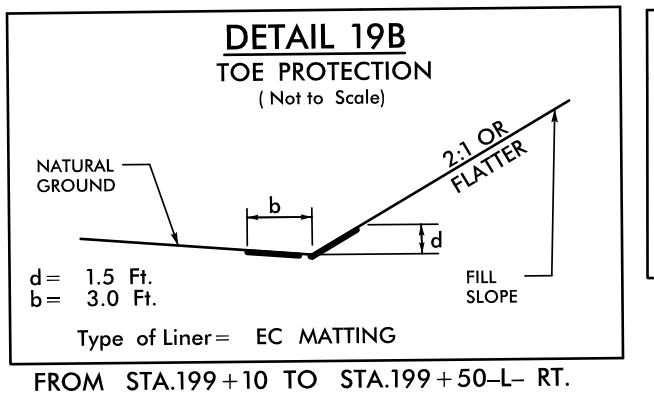
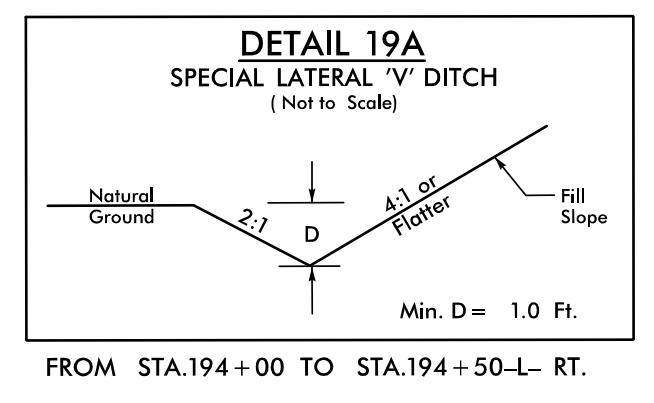
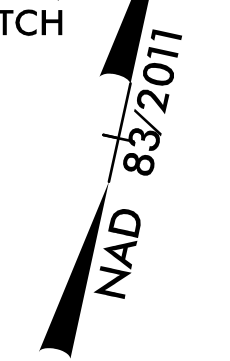


8/17/99

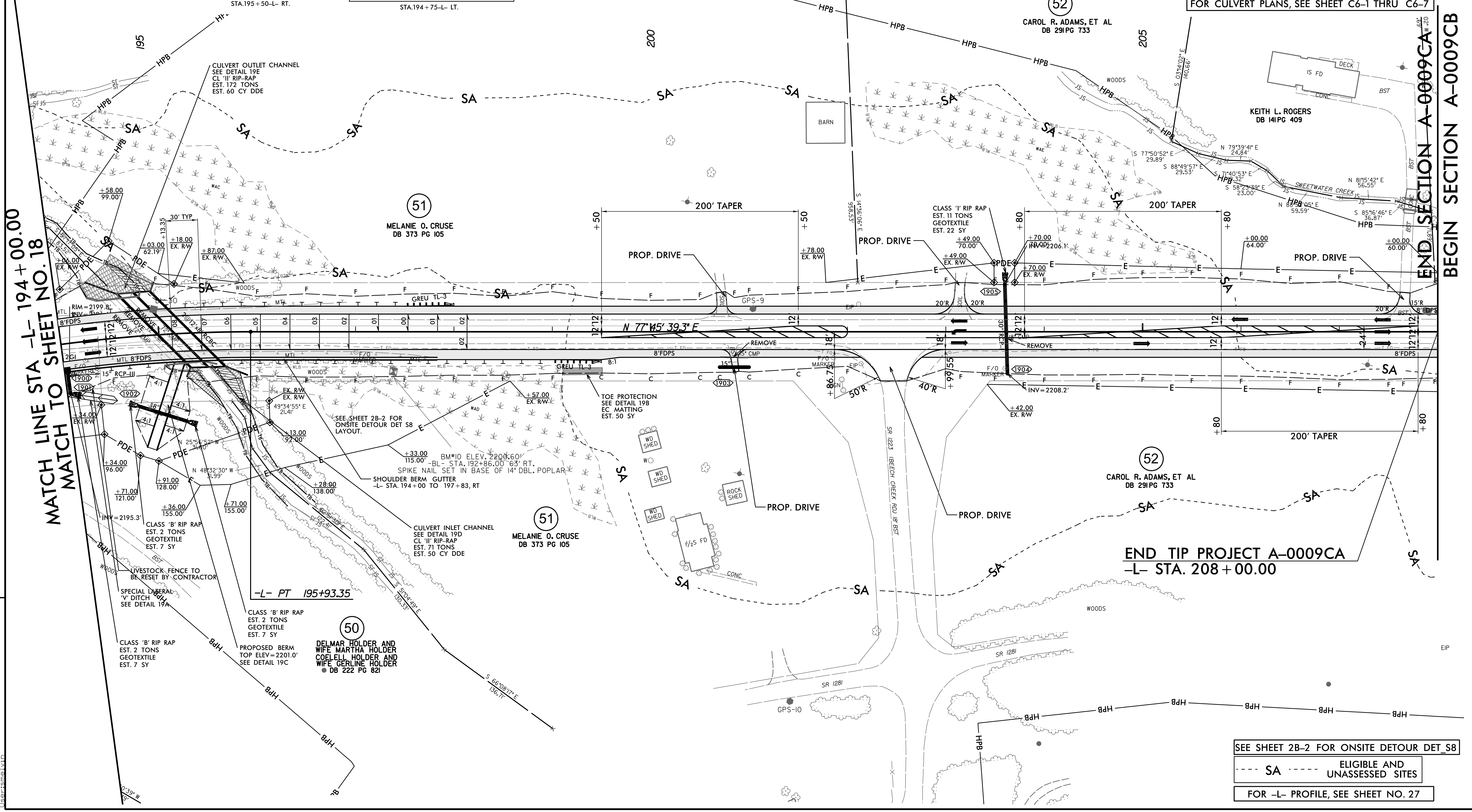
**-L- CURVE DATA**  
 PI Sta 190+83.76  
 $\Delta = 42' 18" 27.4" (RT)$   
 $D = 3' 57" 05.2"$   
 $L = 1,070.69'$   
 $T = 561.07'$   
 $R = 1,450.00'$   
 $SE = 0.08$   
 $DS = 60 MPH$



NOTE:  
 ALL DRIVEWAYS ARE TO BE ASPHALT UNLESS OTHERWISE NOTED.  
 END LOCATION OF DRIVEWAY SHOWN ON PLANS REPRESENTS TIE-IN PER CROSS-SECTIONS, THE CONTRACTOR SHALL EXTEND THE DRIVES AND PAVE UP TO THE RIGHT OF WAY LINE FROM ROW POINT ON MATCH DRIVEWAY IN KIND, UNLESS OTHERWISE NOTED.



PROJECT REFERENCE NO. A-0009CA	SHEET NO. 19
ROADWAY DESIGN ENGINEER	HYDRAULICS ENGINEER
<b>DOCUMENT NOT CONSIDERED FINAL UNLESS ALL SIGNATURES COMPLETED</b>	
 TGS ENGINEERS 201 W. MARION ST SHELBY, NC 28150 PH: (704) 476-0003 CORP. LICENSE NO.: C-0275	



MATCH LINE STA -L- 194+00.00  
 MATCH TO SHEET NO. 18

END SECTION A-0009CA  
 BEGIN SECTION A-0009CB

FOR CULVERT PLANS, SEE SHEET C6-1 THRU C6-7

END TIP PROJECT A-0009CA  
 -L- STA. 208+00.00

SEE SHEET 2B-2 FOR ONSITE DETOUR DET S8  
 --- SA --- ELIGIBLE AND UNASSESSED SITES  
 FOR -L- PROFILE, SEE SHEET NO. 27

REVISIONS  
 5/20/2009 Roadway\Proj\A-0009CA\Plan Sheets\A-0009CA\_Rdy\_psh\_19.dgn  
 11/20/2009 Roadway\Proj\A-0009CA\Plan Sheets\A-0009CA\_Rdy\_psh\_19.dgn