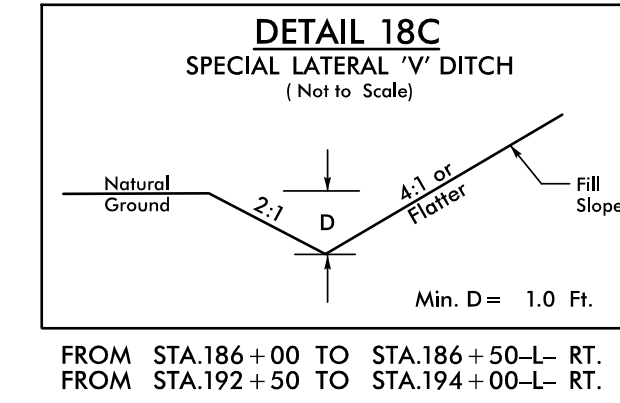
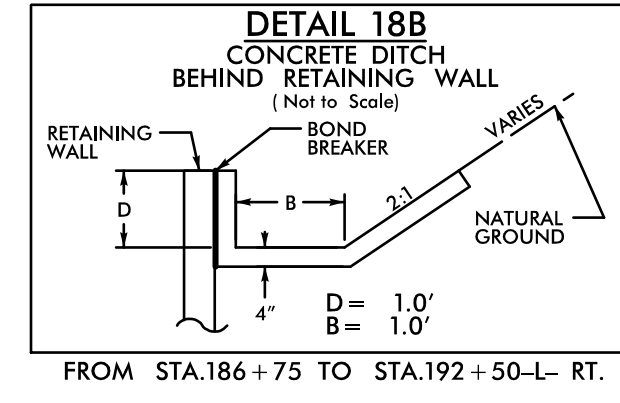
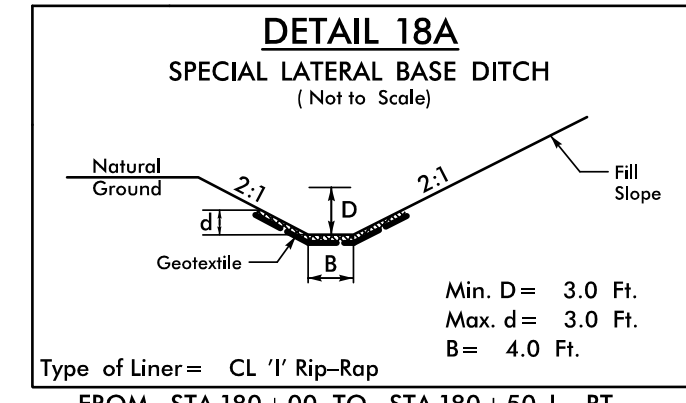


PROJECT REFERENCE NO. A-0009CA	SHEET NO. 18
RW SHEET NO.	
ROADWAY DESIGN ENGINEER	HYDRAULICS ENGINEER

**DOCUMENT NOT CONSIDERED FINAL
UNLESS ALL SIGNATURES COMPLETED**

TGS ENGINEERS
201 W. MARION ST
SHELBY, NC 28150
PH (704) 476-0003
CORP. LICENSE NO.: C-0275

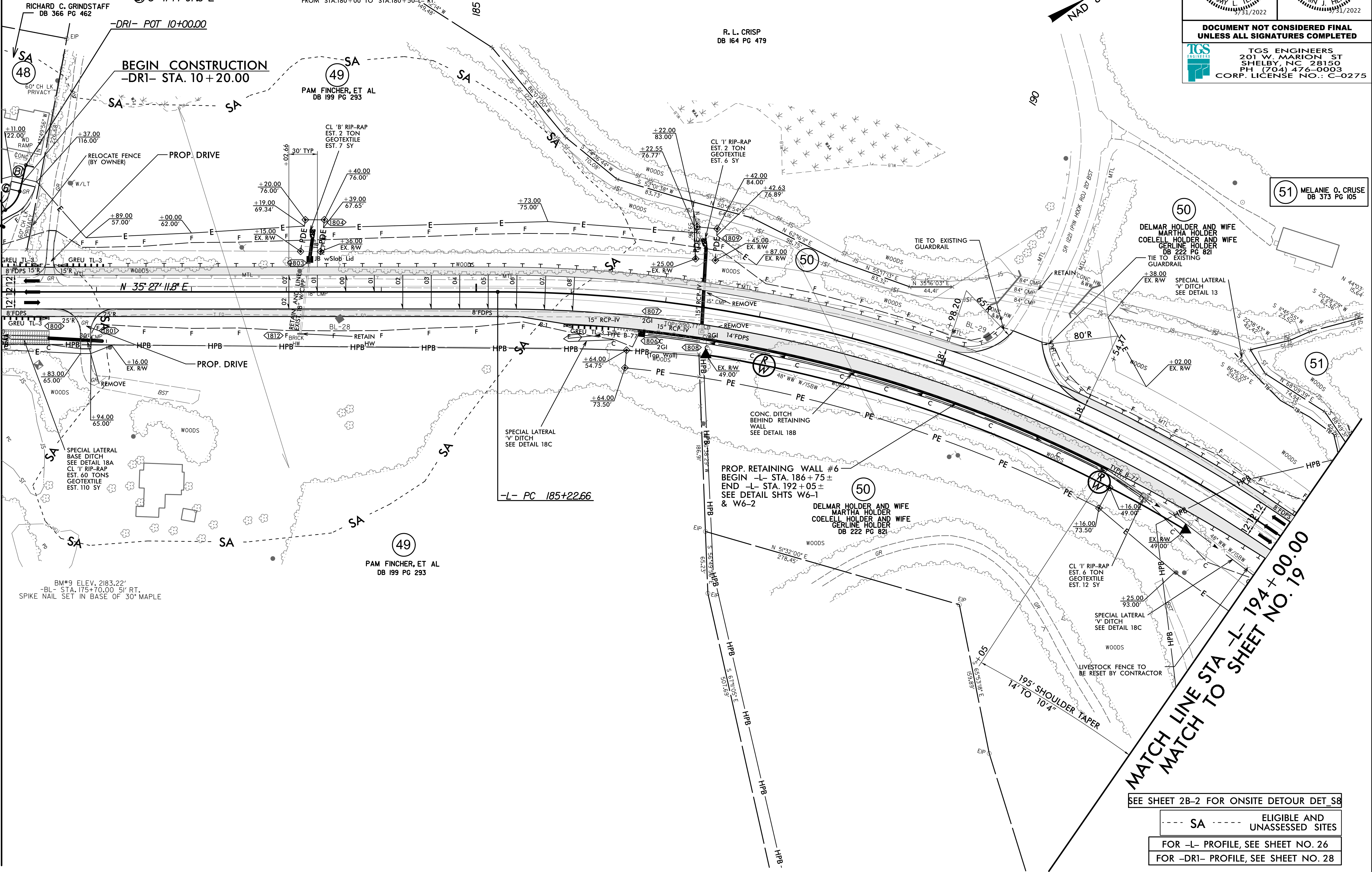
-L- CURVE DATA	-DRI- CURVE DATA
PI Sta 190+83.76	PI Sta 10+41.97
$\Delta = 42^\circ 18' 27.4" (RT)$	$\Delta = 43^\circ 49' 47.4" (RT)$
$D = 3^\circ 57' 05.2"$	$D = 190^\circ 59' 09.4"$
$L = 1,070.69'$	$L = 25.57'$
$T = 561.07'$	$T = 13.62'$
$R = 1,450.00'$	$R = 30.00'$
$SE = 0.08$	
$DS = 60 \text{ MPH}$	
	Ⓞ -DRI- PC 10+28.35
	Ⓞ -DRI- PT 10+53.92
	Ⓞ S 41° 14' 07.6" E



NOTE:
ALL DRIVEWAYS ARE TO BE ASPHALT UNLESS OTHERWISE NOTED.
END LOCATION OF DRIVEWAY SHOWN ON PLANS REPRESENTS TIE-IN PER CROSS-SECTIONS, THE CONTRACTOR SHALL EXTEND THE DRIVES AND PAVE UP TO THE RIGHT OF WAY LINE FROM ROW POINT ON MATCH DRIVEWAY IN KIND, UNLESS OTHERWISE NOTED.

MATCH LINE STA -L- 180+00.00
MATCH TO SHEET NO. 17

MATCH LINE STA -L- 194+00.00
MATCH TO SHEET NO. 19



SEE SHEET 2B-2 FOR ONSITE DETOUR DET 58

--- SA --- ELIGIBLE AND UNASSESSED SITES

FOR -L- PROFILE, SEE SHEET NO. 26

FOR -DRI- PROFILE, SEE SHEET NO. 28

REVISIONS

5/21/2022 A-0009CA-Roadway\Proj\A-0009CA_Plan_Sheets\A-0009CA_Rdy_psh_18.dgn