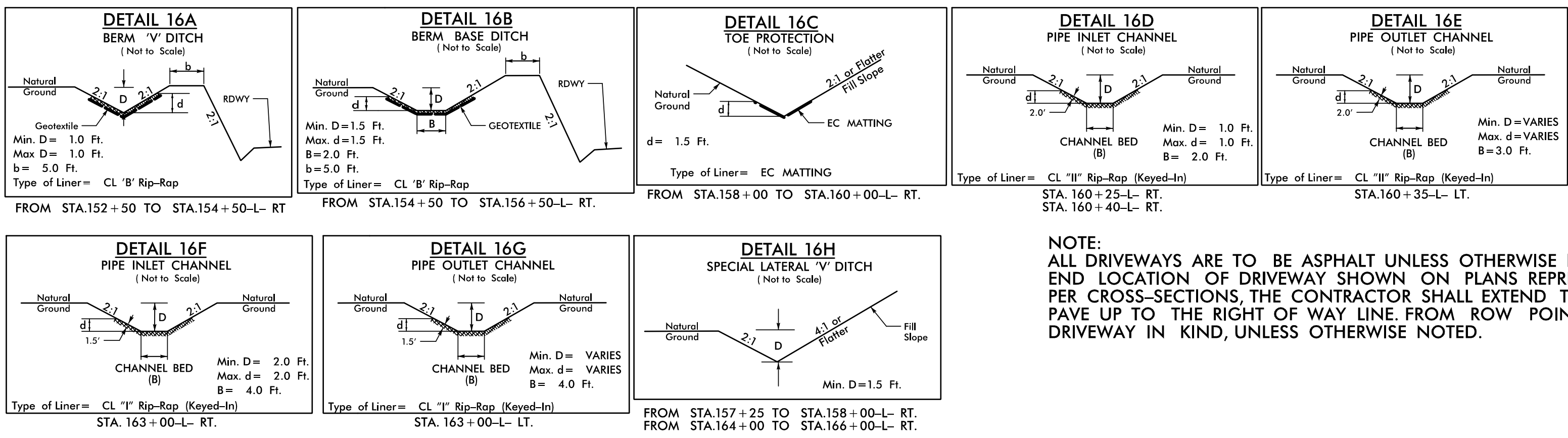


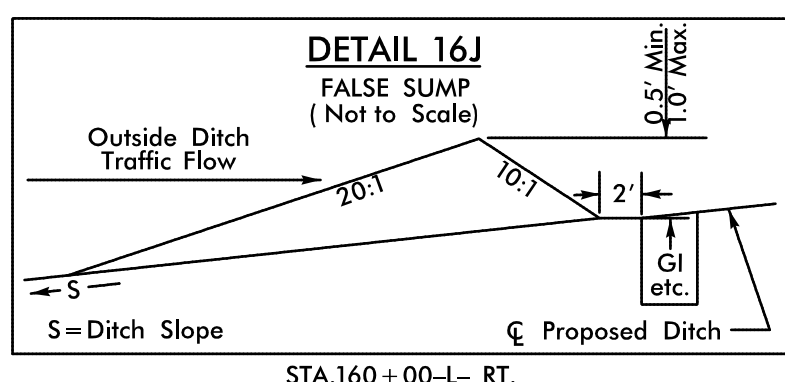
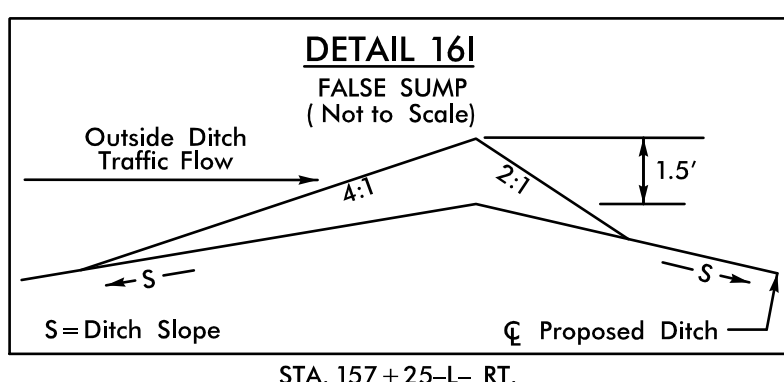
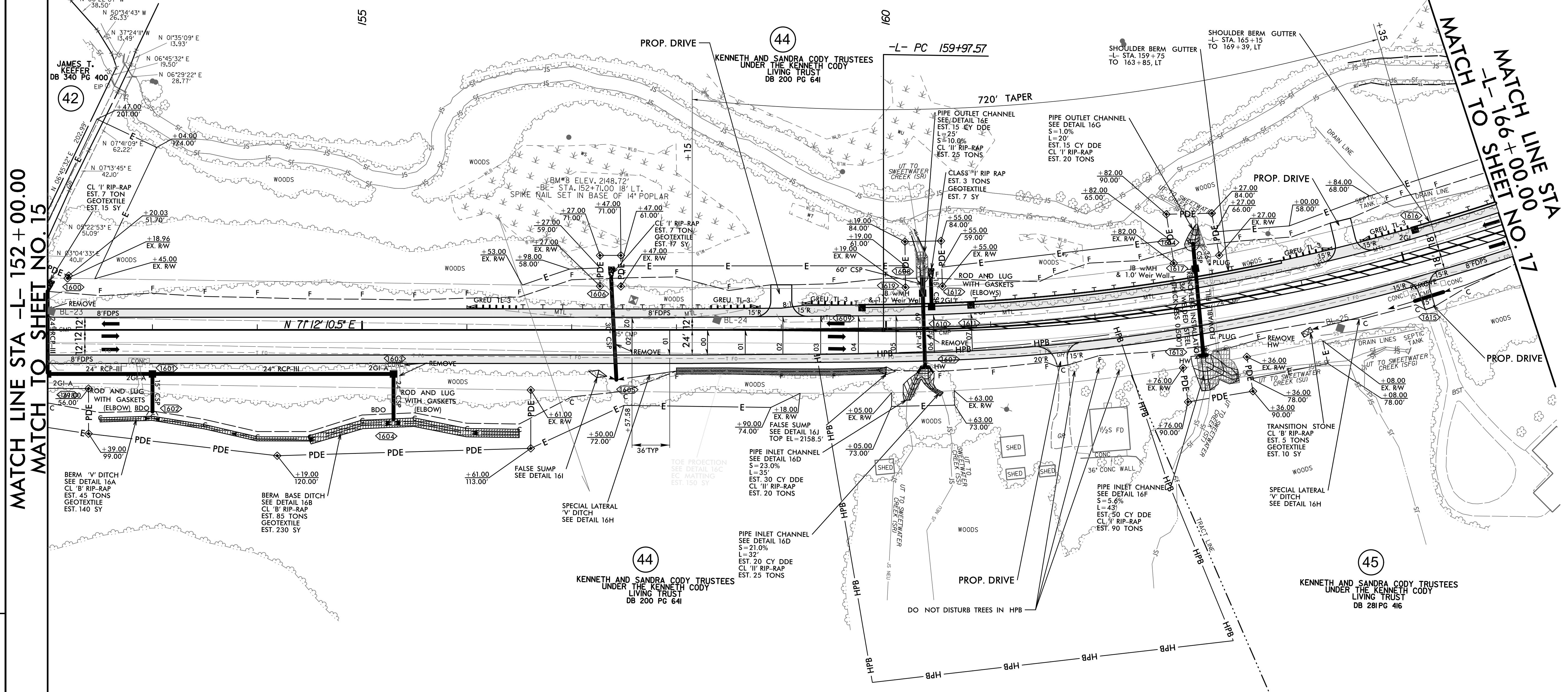
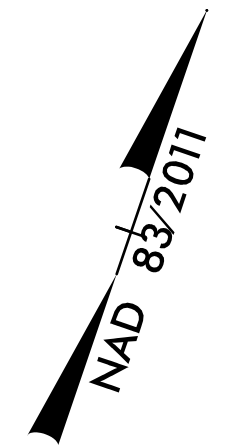
8/17/99

| | |
|-----------------------------------|---------------------|
| PROJECT REFERENCE NO. A-0009CA | SHEET NO. 16 |
| ROADWAY DESIGN ENGINEER | HYDRAULICS ENGINEER |
| | |

-L- CURVE DATA
 PI Sta 166+10.36
 $\Delta = 35^\circ 44' 58.6" (LT)$
 $D = 3^\circ 00' 56.0"$
 $L = 1,185.50'$
 $T = 612.76'$
 $R = 1,900.00'$
 $SE = .007$
 $DS = 60 MPH$



NOTE:
 ALL DRIVEWAYS ARE TO BE ASPHALT UNLESS OTHERWISE NOTED.
 END LOCATION OF DRIVEWAY SHOWN ON PLANS REPRESENTS TIE-IN PER CROSS-SECTIONS, THE CONTRACTOR SHALL EXTEND THE DRIVES AND PAVE UP TO THE RIGHT OF WAY LINE FROM ROW POINT ON MATCH DRIVEWAY IN KIND, UNLESS OTHERWISE NOTED.



NOTE:
 PRIOR TO COMMENCING WORK ON ANY TRENCHLESS INSTALLATION, PROVIDE A DESIGN FOR THE TRENCHLESS INSTALLATION CERTIFIED BY AN ENGINEER LICENSED BY THE STATE OF NORTH CAROLINA, AS REQUIRED BY SUBARTICLE 1550-3(B) OF THE STANDARD SPECIFICATIONS.

FOR -L- PROFILE, SEE SHEET NO. 25

REVISIONS

Sheets\A-0009CA_Rdy_psh_16.dgn
 8/17/99
 8/17/99