

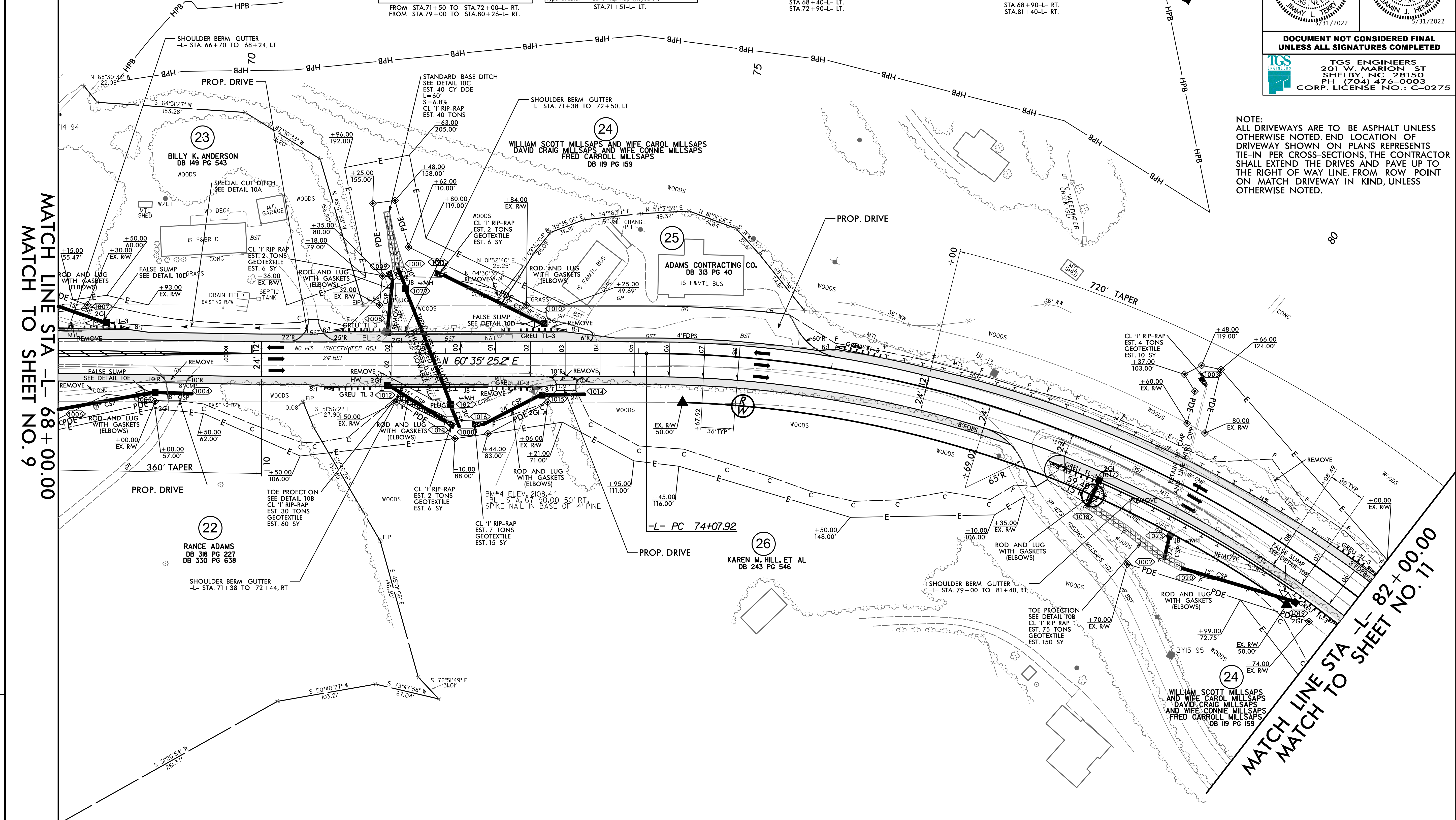
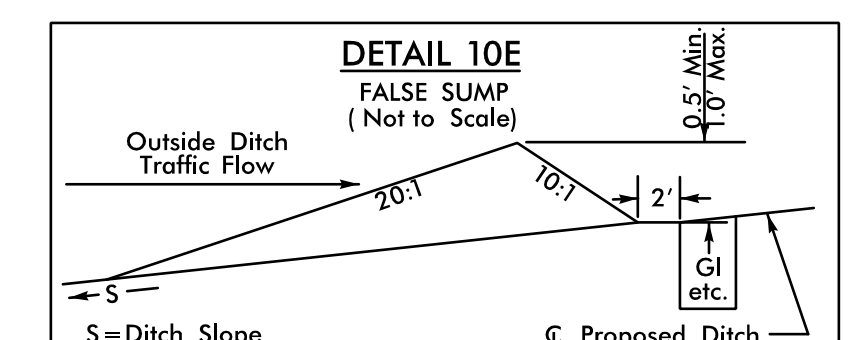
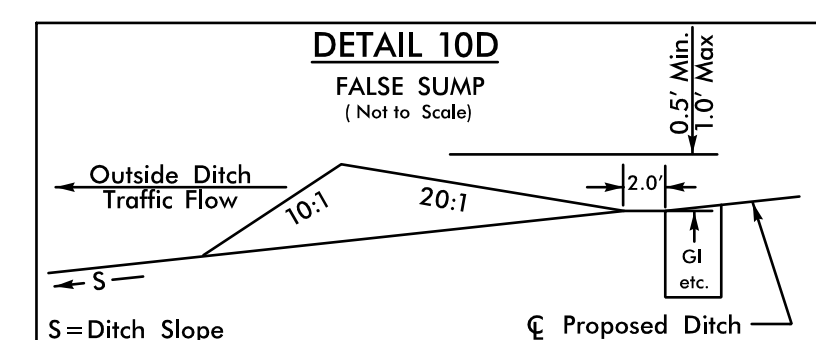
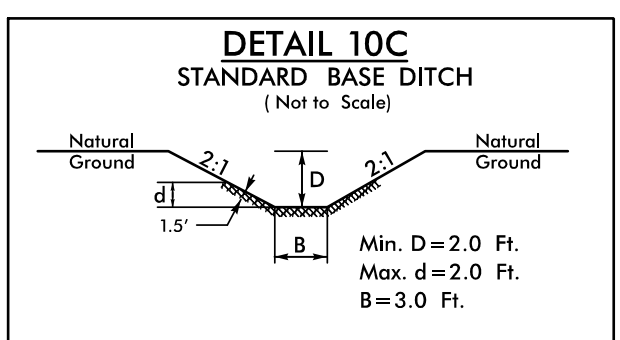
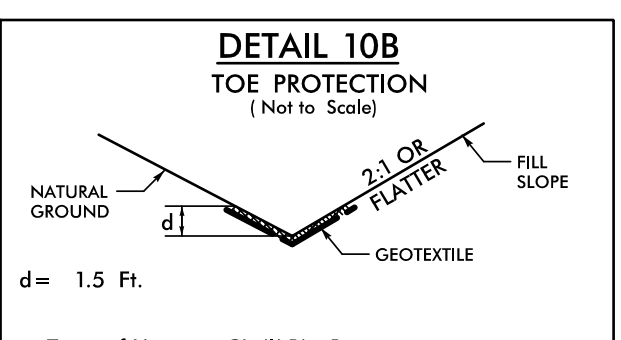
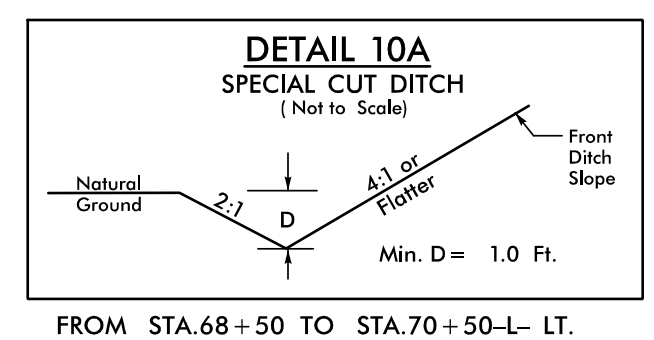
PROJECT REFERENCE NO. A-0009CA		SHEET NO. 10	
RW SHEET NO.		HYDRAULICS ENGINEER	
ROADWAY DESIGN ENGINEER		ENGINEER	

DOCUMENT NOT CONSIDERED FINAL UNLESS ALL SIGNATURES COMPLETED

TGS ENGINEERS
201 W. MARION ST
SHELBY, NC 28150
PH: (704) 476-0003
CORP. LICENSE NO.: C-0275

NOTE:
ALL DRIVEWAYS ARE TO BE ASPHALT UNLESS OTHERWISE NOTED. END LOCATION OF DRIVEWAY SHOWN ON PLANS REPRESENTS TIE-IN PER CROSS-SECTIONS, THE CONTRACTOR SHALL EXTEND THE DRIVES AND PAVE UP TO THE RIGHT OF WAY LINE FROM ROW POINT ON MATCH DRIVEWAY IN KIND, UNLESS OTHERWISE NOTED.

-L- CURVE DATA
 PI Sta 78+21.51
 $\Delta = 38^{\circ} 02' 00.5" (RT)$
 $D = 4^{\circ} 46' 28.7"$
 $L = 796.57'$
 $T = 413.59'$
 $R = 1,200.00'$
 $SE = 0.08$
 $DS = 60 MPH$



NOTE:
PRIOR TO COMMENCING WORK ON ANY TRENCHLESS INSTALLATION, PROVIDE A DESIGN FOR THE TRENCHLESS INSTALLATION CERTIFIED BY AN ENGINEER LICENSED BY THE STATE OF NORTH CAROLINA, AS REQUIRED BY SUBARTICLE 1550-3(B) OF THE STANDARD SPECIFICATIONS.

FOR -L- PROFILE, SEE SHEET NO. 22