

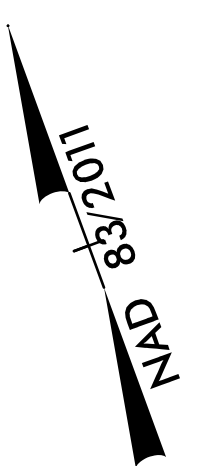
PROJECT REFERENCE NO. A-0009CA	SHEET NO. 8
RW SHEET NO.	
ROADWAY DESIGN ENGINEER	HYDRAULICS ENGINEER
DOCUMENT NOT CONSIDERED FINAL UNLESS ALL SIGNATURES COMPLETED	
TGS ENGINEERS 201 W. MARION ST SHELBY, NC 28150 PH: (704) 476-0003 CORP. LICENSE NO.: C-0275	

-L- CURVE DATA
 PI Sta 59+31.02
 $\Delta = 49^\circ 37' 23.2''$ (LT)
 $D = 5^\circ 58' 05.9''$
 $L = 831.44'$
 $T = 443.82'$
 $R = 960.00'$
 $SE = 0.08$
 $DS = 55$ MPH

FOR CULVERT PLANS, SEE SHEET C2-1 THRU C2-14

NOTE:
 PRIOR TO COMMENCING WORK ON ANY TRENCHLESS INSTALLATION, PROVIDE A DESIGN FOR THE TRENCHLESS INSTALLATION CERTIFIED BY AN ENGINEER LICENSED BY THE STATE OF NORTH CAROLINA, AS REQUIRED BY SUBARTICLE 1550-3(B) OF THE STANDARD SPECIFICATIONS.

NOTE:
 ALL DRIVEWAYS ARE TO BE ASPHALT UNLESS OTHERWISE NOTED. END LOCATION OF DRIVEWAY SHOWN ON PLANS REPRESENTS TIE-IN PER CROSS-SECTIONS, THE CONTRACTOR SHALL EXTEND THE DRIVES AND PAVE UP TO THE RIGHT OF WAY LINE. FROM ROW POINT ON MATCH DRIVEWAY IN KIND, UNLESS OTHERWISE NOTED.



12 JACK EDWARD MILLSAPS AND WIFE LINDA MILLSAPS DB 355 PG 252

12 JACK EDWARD MILLSAPS AND WIFE LINDA MILLSAPS DB 355 PG 252

14 LOVIN MANAGEMENT COMPANY, LLC DB 363 PG 91 DB 363 PG 36 TRACT 1

18 LOVIN MANAGEMENT COMPANY, LLC DB 363 PG 36 TRACT 2

15 NELLY HALL DB 253 PG 537

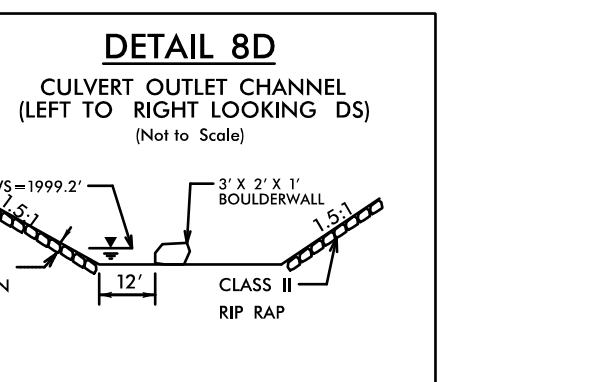
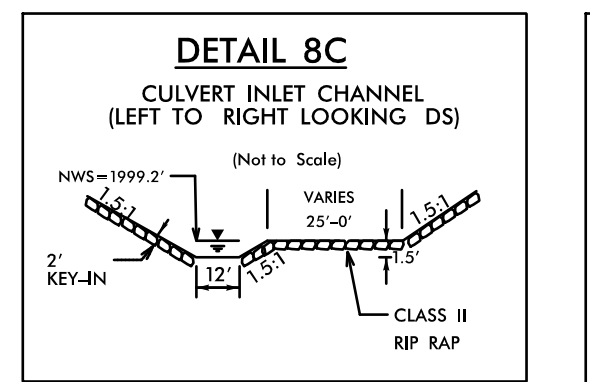
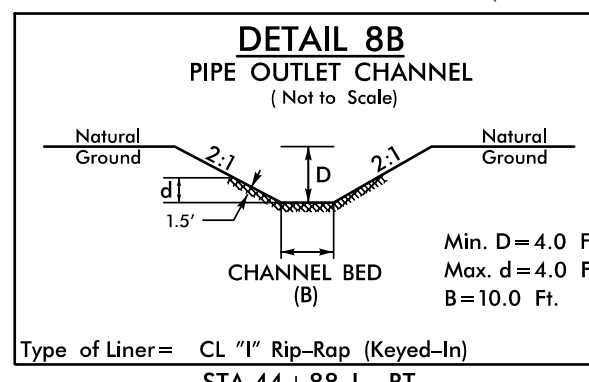
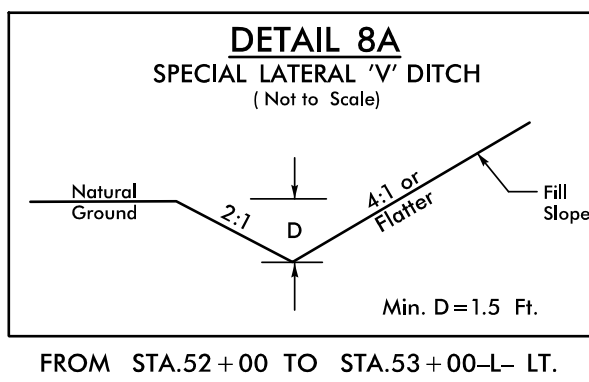
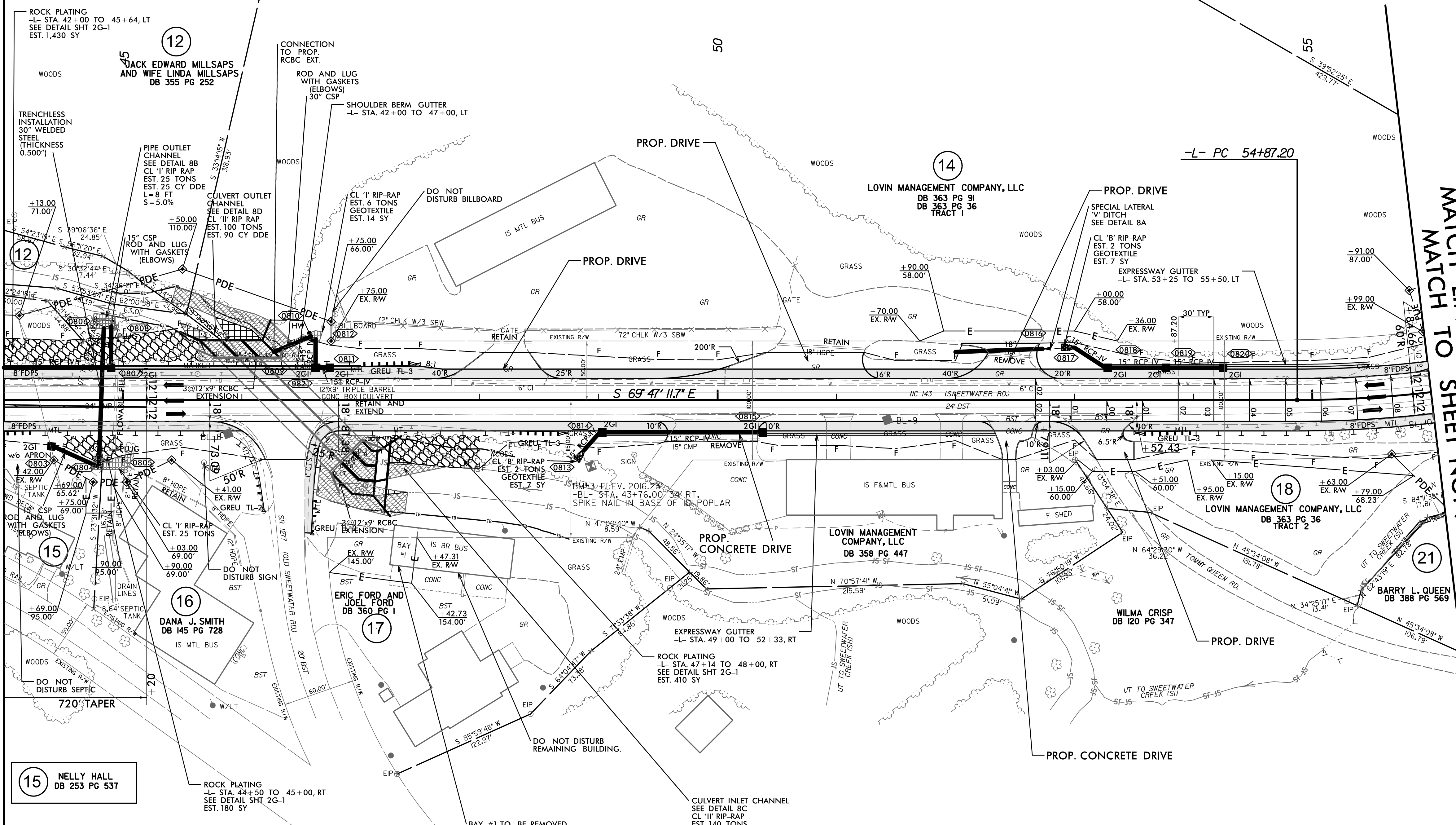
16 DANA J. SMITH DB 145 PG 728

17 ERIC FORD AND JOEL FORD DB 360 PG 1

21 BARRY L. QUEEN DB 388 PG 569

MATCH LINE STA -L- 44+00.00
 MATCH TO SHEET NO. 7

MATCH LINE STA -L- 56+00.00
 MATCH TO SHEET NO. 9



FOR -L- PROFILE, SEE SHEET NO. 21

REVISIONS

5/25/2022 R.A.-0009CA-0009CA Plan Sheets\A-0009CA_Rdy_psh_08.dgn
 8/17/99