

8/17/99

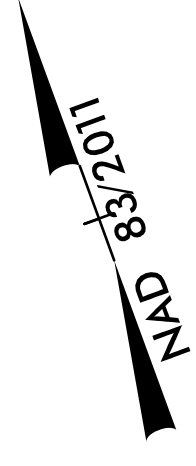
NOTE:
PRIOR TO COMMENCING WORK ON ANY TRENCHLESS INSTALLATION,
PROVIDE A DESIGN FOR THE TRENCHLESS INSTALLATION CERTIFIED
BY AN ENGINEER LICENSED BY THE STATE OF NORTH CAROLINA,
AS REQUIRED BY SUBARTICLE 1550-3(B) OF THE STANDARD SPECIFICATIONS.

NOTE:
ALL DRIVEWAYS ARE TO BE ASPHALT UNLESS OTHERWISE NOTED.
END LOCATION OF DRIVEWAY SHOWN ON PLANS REPRESENTS TIE-IN
PER CROSS-SECTIONS, THE CONTRACTOR SHALL EXTEND THE DRIVES AND
PAVE UP TO THE RIGHT OF WAY LINE FROM ROW POINT ON MATCH
DRIVEWAY IN KIND, UNLESS OTHERWISE NOTED.

PROJECT REFERENCE NO. A-0009CA	SHEET NO. 7
RW SHEET NO.	
ROADWAY DESIGN ENGINEER	HYDRAULICS ENGINEER

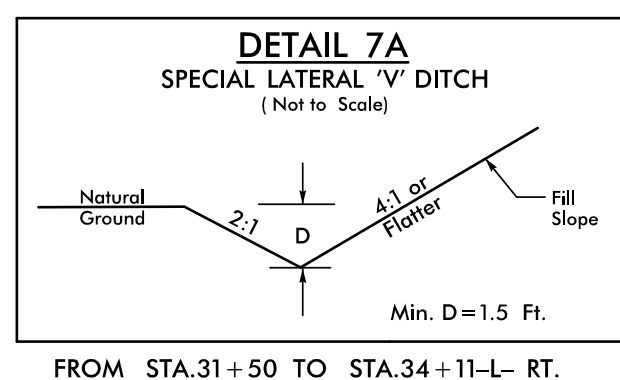
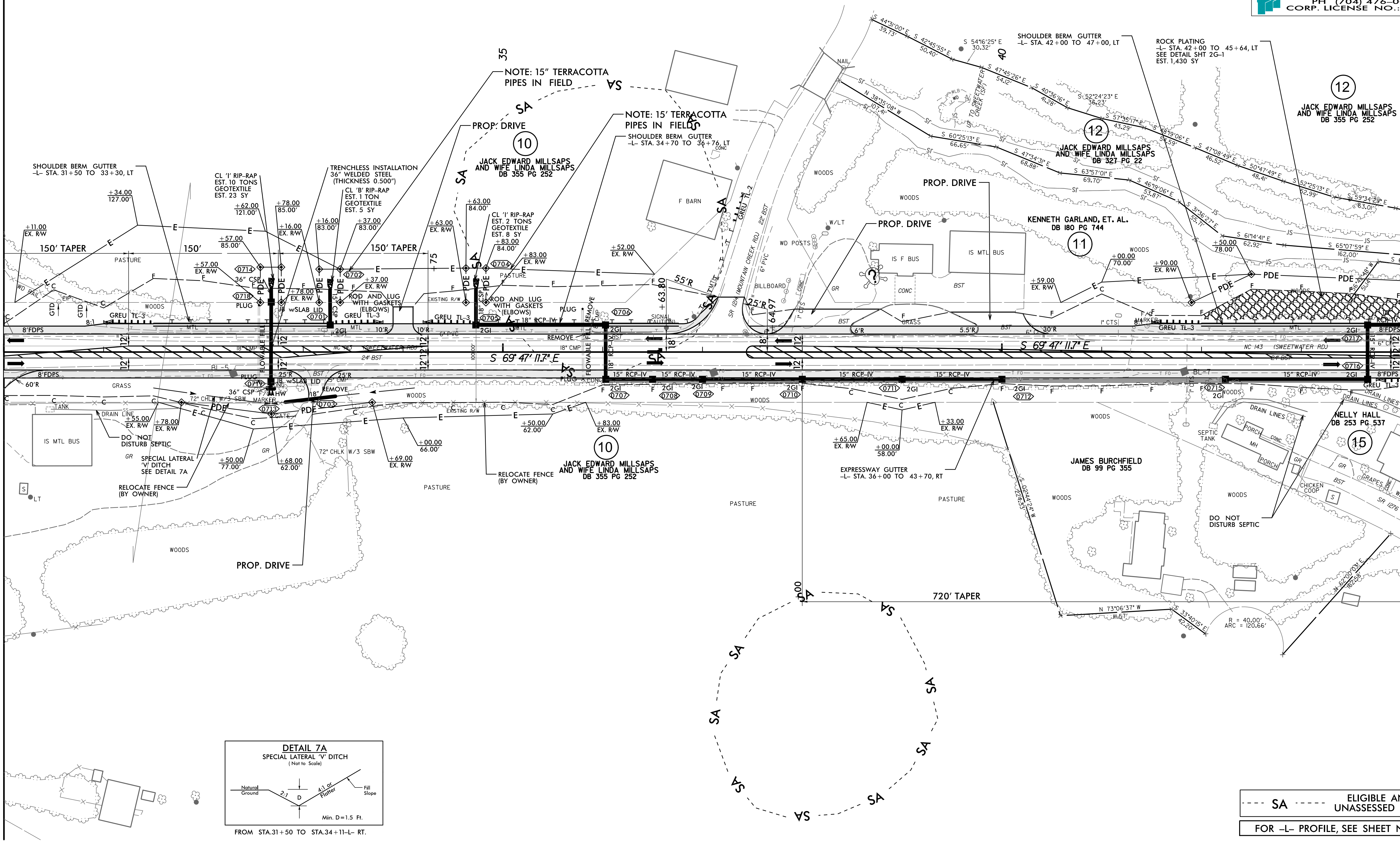
DOCUMENT NOT CONSIDERED FINAL
UNLESS ALL SIGNATURES COMPLETED

TGS ENGINEERS
201 W. MARION ST
SHELBY, NC 28150
PH (704) 476-0003
CORP. LICENSE NO.: C-0275



MATCH LINE STA -L- 30+00.00
MATCH TO SHEET NO. 6

MATCH LINE STA -L- 44+00.00
MATCH TO SHEET NO. 8



--- SA --- ELIGIBLE AND UNASSESSED SITES
FOR -L- PROFILE, SEE SHEET NO. 21

REVISIONS

5/25/2022
X:\Roadway\A-0009CA\Roadway\Proj\A-0009CA_Plan
Sheets\A-0009CA_Rdy_psh_07.dgn