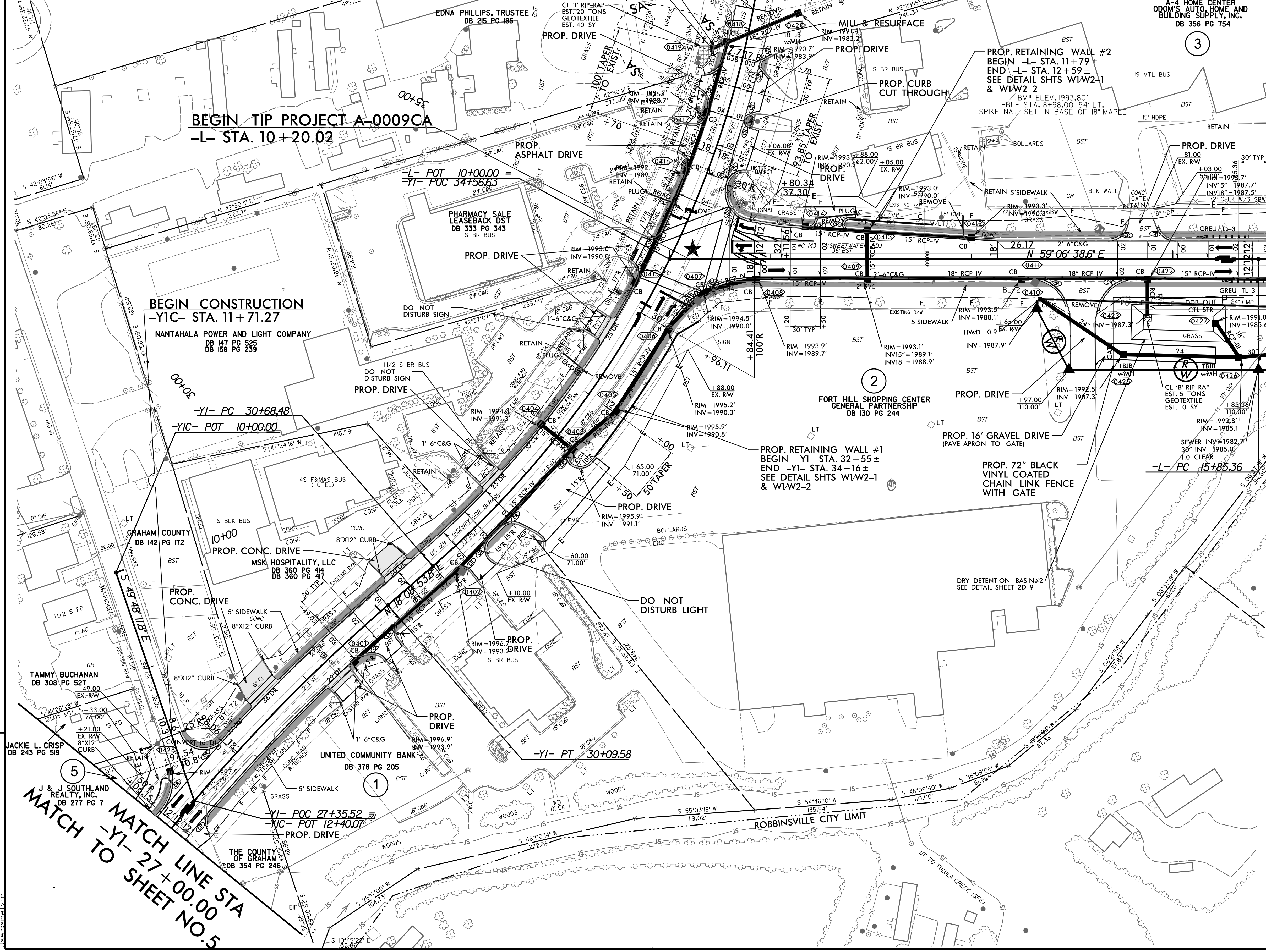


-YI- CURVE DATA		-L- CURVE DATA	
PI Sta 24+35.36	PI Sta 36+22.21	PI Sta 21+39.93	PI Sta 21+39.93
$\Delta = 38^{\circ}00'53.8"$ (RT)	$\Delta = 59^{\circ}11'14.3"$ (LT)	$\Delta = 51^{\circ}06'09.7"$ (RT)	$\Delta = 51^{\circ}06'09.7"$ (RT)
$D = 3^{\circ}10'59.2"$	$D = 5^{\circ}52'35.4"$	$D = 4^{\circ}56'21.4"$	$D = 4^{\circ}56'21.4"$
$L = 1,94.27'$	$L = 1,007.19'$	$L = 1,034.62'$	$L = 1,034.62'$
$T = 620.05'$	$T = 553.73'$	$T = 554.57'$	$T = 554.57'$
$R = 1,800.00'$	$R = 975.00'$	$R = 1,600.00'$	$R = 1,600.00'$
$SE = 0.03$	$SE = 0.04$	$SE = 0.04$	$SE = 0.04$
$DS = 45$ MPH	$DS = 50$ MPH	$DS = 50$ MPH	$DS = 50$ MPH

END CONSTRUCTION
-YI- STA. 37 + 20.00



PROJECT REFERENCE NO. A-0009CA	SHEET NO. 4
ROADWAY DESIGN ENGINEER	HYDRAULICS ENGINEER

DOCUMENT NOT CONSIDERED FINAL UNLESS ALL SIGNATURES COMPLETED

TGS ENGINEERS
201 W. MARION ST
SHELBY, NC 28150
PH: (704) 476-0003
CORP. LICENSE NO.: C-0275

MATCH LINE STA -L- 16 + 00.00
MATCH TO SHEET NO.6

NOTE:
ALL DRIVEWAYS ARE TO BE ASPHALT UNLESS OTHERWISE NOTED. END LOCATION OF DRIVEWAY SHOWN ON PLANS REPRESENTS TIE-IN PER CROSS-SECTIONS, THE CONTRACTOR SHALL EXTEND THE DRIVES AND PAVE UP TO THE RIGHT OF WAY LINE FROM ROW POINT ON MATCH DRIVEWAY IN KIND, UNLESS OTHERWISE NOTED.

- SA ELIGIBLE AND UNASSESSED SITES
- PROP CONC SIDEWALK
- PROPOSED SIGNAL

AVERAGE DAILY TRAFFIC			
		9,500	12,900
	200	3,600	7,200
	300	4,300	8,500
COMMERCIAL DRIVE	700	3,500	4,100
	900	4,100	4,100
	400	3,500	4,100
	500	4,100	4,100
		9,600	12,900
		-L- NC 143	

2019 ADT
2045ADT

FOR -L- PROFILE, SEE SHEET NO. 20
FOR -YI- PROFILE, SEE SHEET NO. 28

REVISIONS

5/10/2022 A-0009CA_0009CA.dwg
J & J SOUTHLAND REALTY, INC.
DB 277 PG 7

MATCH LINE STA -YI- 27 + 00.00
MATCH TO SHEET NO.5