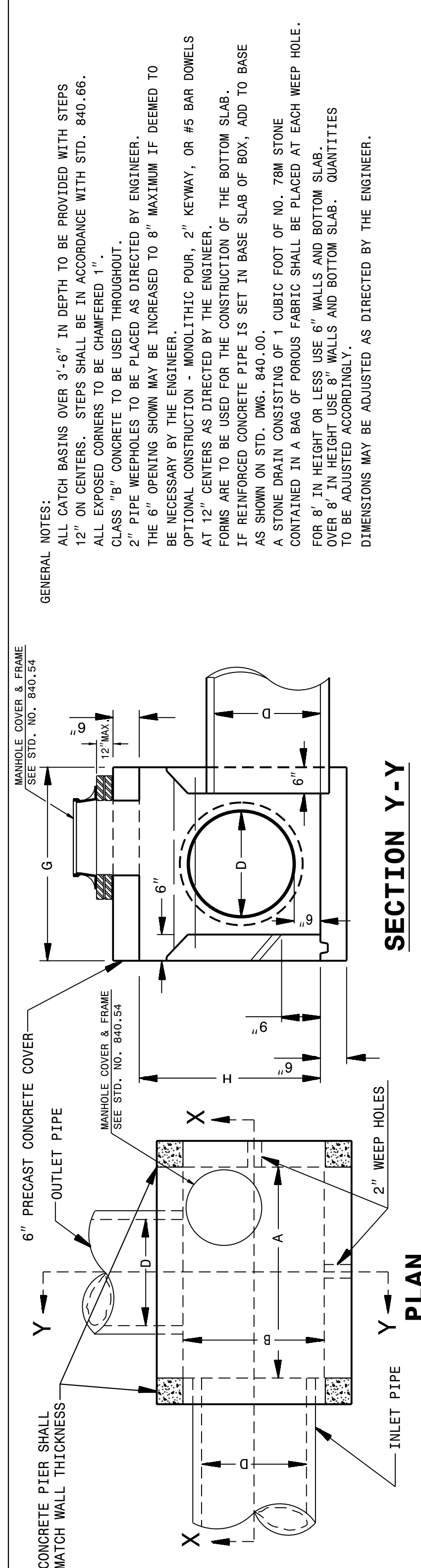


24-APR-2019 07:24  
 S:\Contracts\Special Details\jhover-ton\840d04 3 or 4 side OTCB.dgn  
 jhover-ton AT CSD-292595

5/14/99

STATE OF  
 NORTH CAROLINA  
 DEPT. OF TRANSPORTATION  
 DIVISION OF HIGHWAYS  
 RALEIGH, N.C.

STATE OF  
 NORTH CAROLINA  
 DEPT. OF TRANSPORTATION  
 RALEIGH, N.C.



ENGLISH DETAIL DRAWING FOR  
**CONCRETE CATCH BASIN**  
 (3 OR 4 SIDE OPEN THROAT)  
 (MANHOLE OPTIONAL)

ENGLISH DETAIL DRAWING FOR  
**CONCRETE CATCH BASIN**  
 (3 OR 4 SIDE OPEN THROAT)  
 (MANHOLE OPTIONAL)

**GENERAL NOTES:**  
 ALL CATCH BASINS OVER 3'-6" IN DEPTH TO BE PROVIDED WITH STEPS 12" ON CENTERS. STEPS SHALL BE IN ACCORDANCE WITH STD. 840.66. ALL EXPOSED CORNERS TO BE CHAMFERED 1". CLASS 'B' CONCRETE TO BE USED THROUGHOUT.  
 2" PIPE WEEPHOLES TO BE PLACED AS DIRECTED BY THE ENGINEER.  
 THE 6" OPENING SHOWN MAY BE INCREASED TO 8" MAXIMUM IF DEEMED TO BE NECESSARY BY THE ENGINEER.  
 OPTIONAL CONSTRUCTION - MONOLITHIC POUR, 2" KEYWAY, OR #5 BAR DOWELS FORMS ARE TO BE USED FOR THE CONSTRUCTION OF THE BOTTOM SLAB.  
 IF REINFORCED CONCRETE PIPE IS SET IN BASE SLAB OF BOX, ADD TO BASE AS SHOWN ON STD. DWG. 840.00.  
 A STONE DRAIN CONSISTING OF 1 CUBIC FOOT OF NO. 78M STONE CONTAINED IN A BAG OF POROUS FABRIC SHALL BE PLACED AT EACH WEEP HOLE.  
 FOR 8" IN HEIGHT OR LESS USE 6" WALLS AND BOTTOM SLAB.  
 OVER 8" IN HEIGHT USE 8" WALLS AND BOTTOM SLAB. QUANTITIES TO BE ADJUSTED ACCORDINGLY.  
 DIMENSIONS MAY BE ADJUSTED AS DIRECTED BY THE ENGINEER.

**SECTION Y-Y**

**PLAN**

**PART SECTION Y-Y**

**SECTION X-X**

**PART SECTION Y-Y**

**PART SECTION Y-Y**

**SECTION X-X**

SHOWING METHOD OF CONSTRUCTION IF INCREASED OPENING IS USED

SHOWING METHOD OF CONSTRUCTION FOR 6" OPENING

SEE NOTE

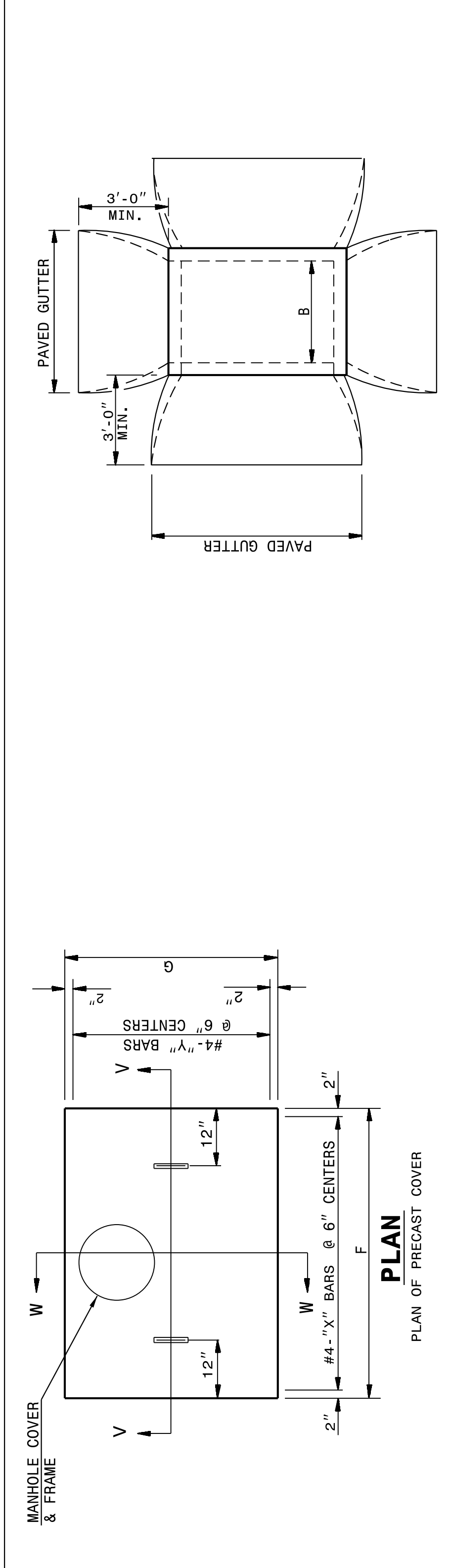
PIPE DIM'S OF BOX & PIPE	MIN. DIMENSIONS AND QUANTITIES FOR CONCRETE CATCH BASIN (BASED ON MIN. HEIGHT, H)				TOTAL QUANTITIES				DEDUCTION ONE PIPE 6" THROAT OPENING				
	SPAN		HEIGHT		BOX & SLABS		R.C.						
D	A	B	H	NO. BARS	NO. LENGTH	NO. LENGTH	NO. LENGTH	CU. YDS. CONC.	CU. S.	R. C.			
12"	3'-6"	2'-3"	1'-10"	4	3'-0"	6	4'-3"	0.181	0.271	1.046	0.015	0.032	0.046
15"	3'-6"	2'-3"	2'-1"	4	3'-0"	6	4'-3"	0.181	0.271	1.046	0.015	0.032	0.046
18"	4'-0"	2'-8"	2'-4"	5	3'-5"	7	4'-9"	0.226	0.340	1.379	0.033	0.049	0.063
24"	4'-0"	2'-8"	2'-10"	5	3'-5"	7	4'-9"	0.226	0.340	1.379	0.033	0.049	0.063
30"	4'-0"	3'-6"	3'-4"	5	4'-3"	9	4'-9"	0.278	0.417	1.916	0.092	0.127	0.053
36"	4'-0"	4'-6"	4'-4"	5	5'-3"	12	5'-9"	0.340	0.510	2.390	0.132	0.178	0.069
42"	5'-0"	4'-6"	4'-4"	5	5'-3"	12	5'-9"	0.340	0.510	2.390	0.132	0.178	0.069
48"	5'-0"	5'-0"	4'-10"	5	5'-9"	13	5'-9"	0.444	0.666	3.298	0.235	0.317	0.066

SHEET 1 OF 2  
**840D04**

SHEET 1 OF 2  
**840D04**

STATE OF  
 NORTH CAROLINA  
 DEPT. OF TRANSPORTATION  
 DIVISION OF HIGHWAYS  
 RALEIGH, N.C.

STATE OF  
 NORTH CAROLINA  
 DEPT. OF TRANSPORTATION  
 DIVISION OF HIGHWAYS  
 RALEIGH, N.C.



ENGLISH DETAIL DRAWING FOR  
**CONCRETE CATCH BASIN**  
 (3 OR 4 SIDE OPEN THROAT)  
 (MANHOLE OPTIONAL)

ENGLISH DETAIL DRAWING FOR  
**CONCRETE CATCH BASIN**  
 (3 OR 4 SIDE OPEN THROAT)  
 (MANHOLE OPTIONAL)

**PLAN OF CATCH BASIN IN MEDIAN STRIP**

**SECTION V-V**

**SECTION W-W**

**SECTION OF CATCH BASIN MEDIAN STRIP**

DETAIL SHOWING METHOD OF PLACING CATCH BASIN AND PAVED SHOULDER GUTTER

PART WHERE HANDLE IS LOCATED SHALL BE COUNTERSUNK 1" AND HANDLE SHALL BE FREE TO MOVE UP AND DOWN.

SHEET 2 OF 2  
**840D04**

SHEET 2 OF 2  
**840D04**

**SEE PLATE FOR TITLE**

CONTRACT STANDARDS  
 AND DEVELOPMENT UNIT  
 Office 919-707-6950 FAX 919-250-4119

ORIGINAL BY: \_\_\_\_\_ DATE: \_\_\_\_\_  
 MODIFIED BY: rnbritt DATE: 07-03-2014  
 CHECKED BY: \_\_\_\_\_ DATE: \_\_\_\_\_  
 FILE SPEC.: details/rnbritt/english/hydro/840d04.dgn



5/31/2022

DOCUMENT NOT CONSIDERED FINAL  
 UNLESS ALL SIGNATURES COMPLETED