

ONSITE DETOUR DET_S8

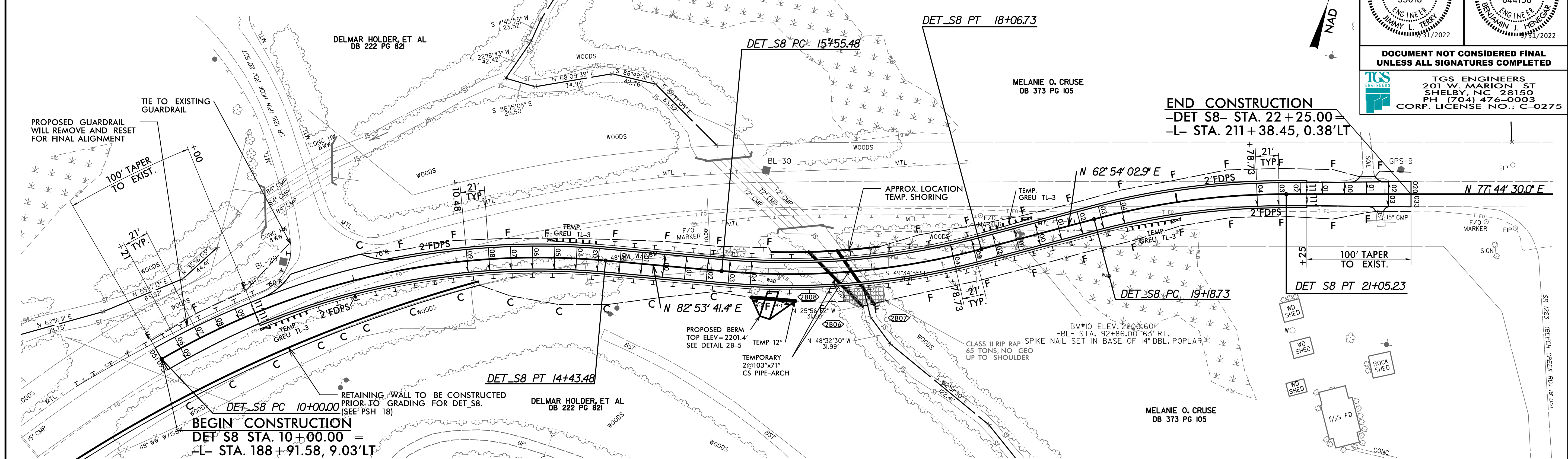
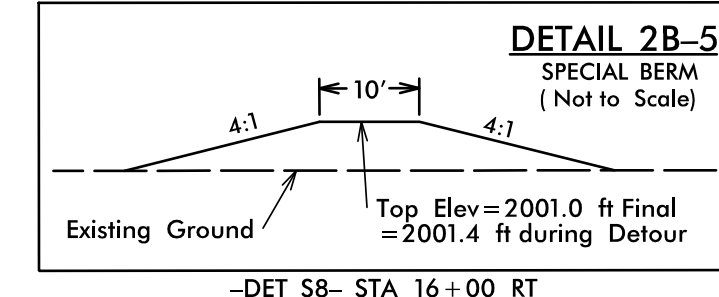
PROJECT REFERENCE NO. A-0009CA	SHEET NO. 2B-3
ROADWAY DESIGN ENGINEER NORTH CAROLINA PROFESSIONAL SEAL 35018 MANNY L. TERRY 3/31/2022	HYDRAULICS ENGINEER NORTH CAROLINA PROFESSIONAL SEAL 044158 WINNIE J. HENCHER 3/31/2022

DOCUMENT NOT CONSIDERED FINAL UNLESS ALL SIGNATURES COMPLETED

TGS ENGINEERS
201 W. MARION ST
SHELBY, NC 28150
PH: (704) 476-0003
CORP. LICENSE NO.: C-0275

DET S8 CURVE DATA

PI Sta	PI Sta	PI Sta
12+29.03	16+82.39	20+12.50
$\Delta = 35' 17" 26.7" (RT)$	$\Delta = 19' 59" 38.5" (LT)$	$\Delta = 14' 50" 27.1" (RT)$
$D = 7' 57" 27.9"$	$D = 7' 57" 27.9"$	$D = 7' 57" 27.9"$
$L = 443.48'$	$L = 251.25'$	$L = 186.50'$
$T = 229.03'$	$T = 126.92'$	$T = 93.77'$
$R = 720.00'$	$R = 720.00'$	$R = 720.00'$
$SE = 0.08$	$SE = 0.04$	$SE = 0.04$
$DS = 45 \text{ MPH}$	$DS = 45 \text{ MPH}$	$DS = 45 \text{ MPH}$



PIPE HYDRAULIC DATA
TEMP. 2 @ 103"x71" CSPA Sta.16+75 -DETS8- 2B06 & 2B07

DRAINAGE AREA	= 4.39	SQ MI
DESIGN FREQUENCY	= 5	YRS
DESIGN DISCHARGE	= 630	CFS
DESIGN HW ELEVATION	= 220.11	FT
100 YEAR DISCHARGE	= N/A	CFS
100 YEAR HW ELEVATION	= N/A	FT
OVERTOPPING FREQUENCY	= 5+	YRS
OVERTOPPING DISCHARGE	= 660	CFS
OVERTOPPING ELEVATION	= 220.14	FT

REVISIONS

8/17/99
 5/28/2022
 X:\Projects\Roadway\Proj\A-0009CA\Plan_Sheets\Detours\Site 8\A-0009CA_Rd\Onsite Detour(Site8)_Sht2B-3.dgn
 License: 35018